

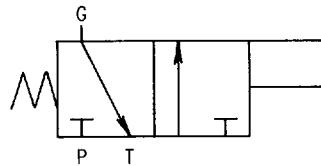
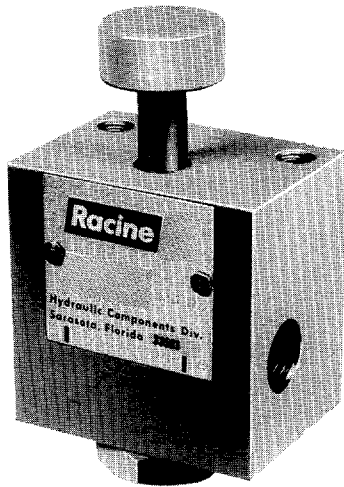


BOSCH

Engineering Data

GAGE ISOLATOR AND 3-WAY VALVE

FOOT MOUNTED
PANEL MOUNTED
SUBPLATE MOUNTED
STACKABLE



SYMBOL

SPECIFICATIONS

PRESSURE RATING —

5000 psi (345 bar) gage and pressure ports
3000 psi (207 bar) tank port
3000 psi (207 bar) on all ports of stackable valves

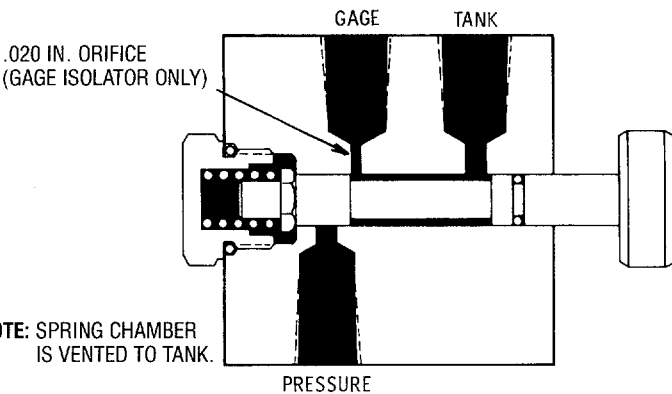
ORIFICE SIZE —

0.020 in. (0.51 mm) Gage Isolator
0.125 in. (3.17 mm) 3-Way Valve

FLUID RECOMMENDATIONS — Premium grade hydraulic fluid with 60 SUS (10 cSt) to 1000 SUS (217 cSt) viscosity at operating temperature. For detailed fluid information, refer to Racine publication S-106, "Petroleum Hydraulic Fluids" and S-107, "Fire Resistant Fluids".

DETECT — A detented version of the valve is available. The pushbutton must be depressed and turned to engage the detent.

PICTORIAL



NOTE: SPRING CHAMBER IS VENTED TO TANK.

TEMPERATURE — Under normal conditions of continuous operation, fluid temperature should not exceed 180°F (82°C). In no instance, should temperature exceed 200°F (93°C).

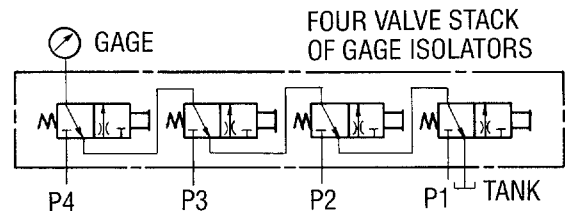
SEALS — Viton seals are standard to allow operation with petroleum base fluids and most fire-resistant fluids.

MOUNTING — Not restricted.

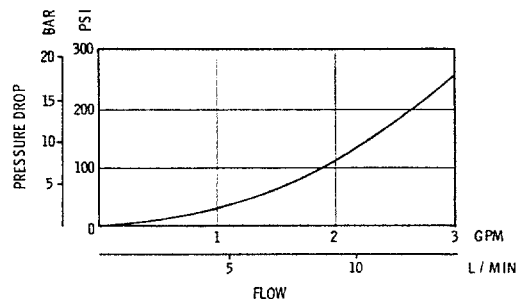
MATERIAL — All steel.

WEIGHTS (Approx.) —

Foot mounted	1 lb. 10 oz. (0.74 kg)
Subplate mounted	1 lb. 2 oz. (0.51 kg)
Subplate	3 oz. (0.09 kg)
2 - Valve stack	2 lb. 10 oz. (1.19 kg)
Additional valves	1 lb. 2 oz. (0.51 kg) each



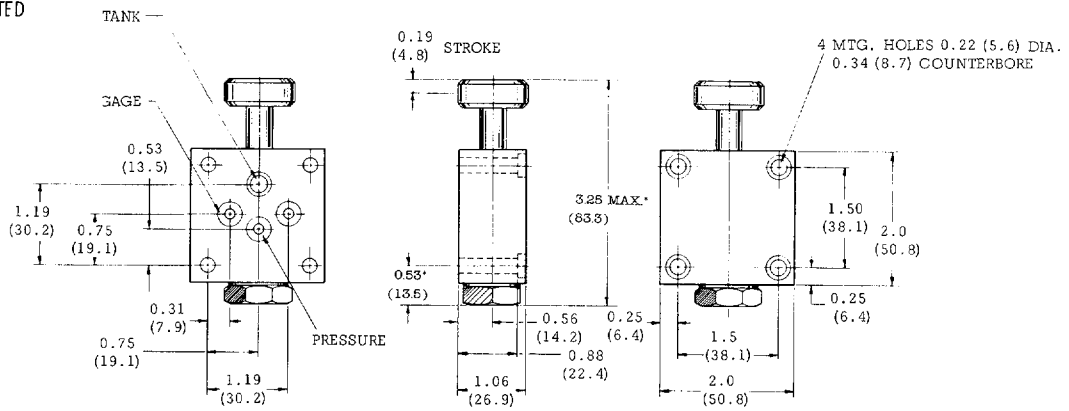
By using the stackable gage isolator, one gage can be used to measure pressure at several locations (maximum of ten) reducing the cost of the circuit.



Gage isolators are used to isolate the pressure gage from the circuit to prolong the accuracy and life. To read the pressure, the pushbutton must be depressed. A 0.020 inch orifice is placed in the gage port to act as a snubber and prevent shock damage to the gage. The optional Three-way valve does not have a snubber and should only be used with gages that have a snubber built in or are liquid filled.

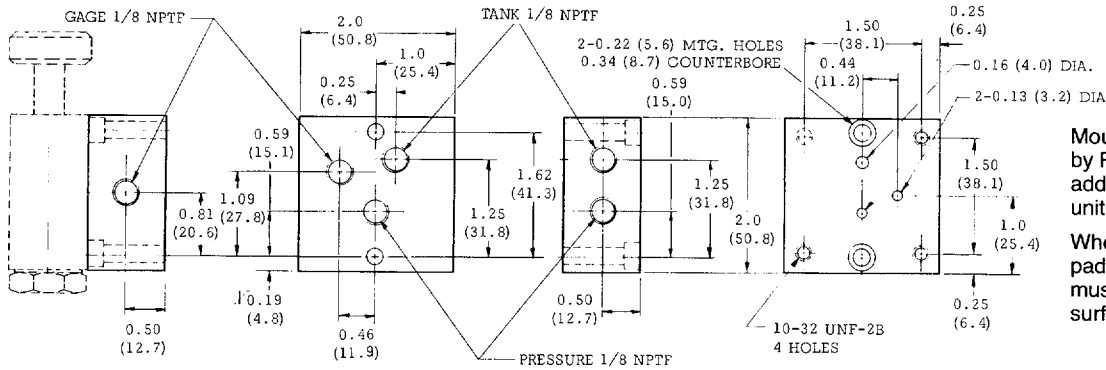
DIMENSIONAL DATA

SUBPLATE MOUNTED



*ADD 0.654 (16.6) FOR
DETENTED VALVES

SUBPLATE



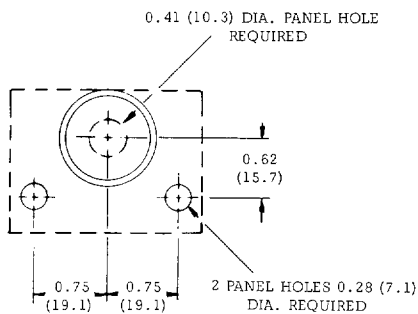
Mounting subplates are furnished by Racine but must be specified in addition to the model number of the unit selected.

When subplate is not used, a machined pad must be provided for mounting. Pad must be flat within 0.0003 in/in with a surface finish of 63 rms.

PANEL MOUNTED

PRODUCT LITERATURE DISCLAIMER

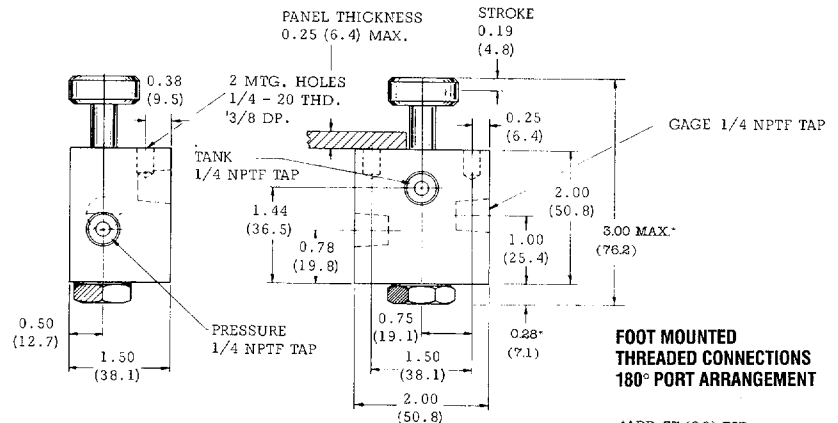
SPECIFICATIONS AND/OR DIMENSIONS ARE SUBJECT TO CHANGE WITHOUT PRIOR NOTICE. PLEASE CONSULT FACTORY.



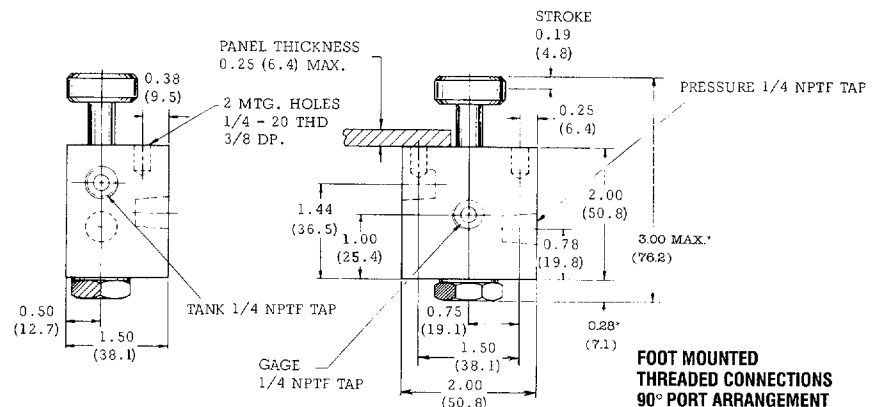
PANEL MOUNTING DETAIL

INCHES
(MILLIMETRES)

NOTE:
UNLESS OTHERWISE SPECIFIED
ALL DIMENSIONS ARE NOMINAL.



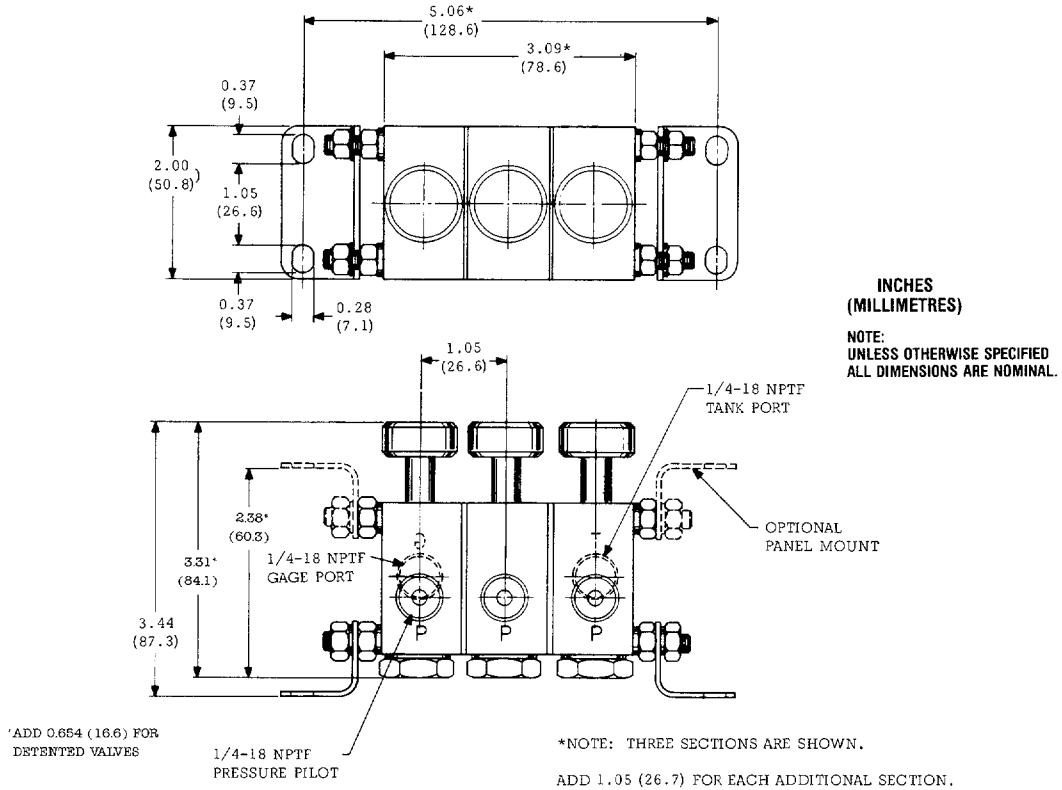
PANEL MOUNTED - 180° PORT ARRANGEMENT



PANEL MOUNTED - 90° PORT ARRANGEMENT

DIMENSIONAL DATA

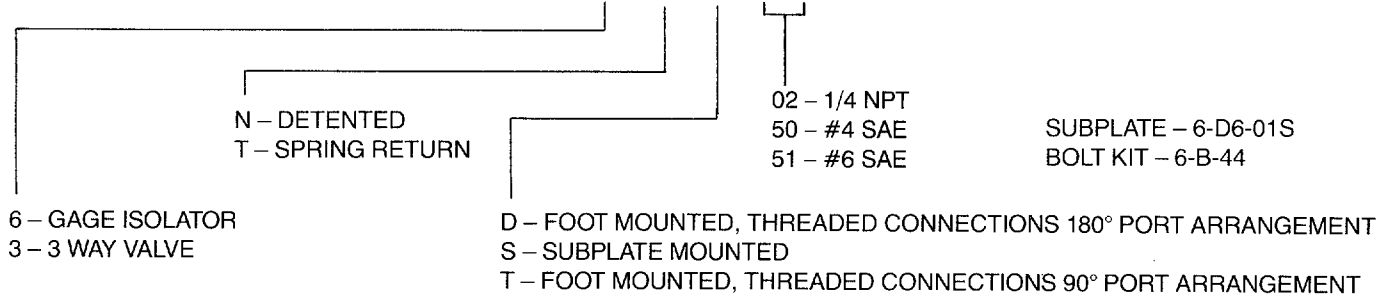
STACKABLE VALVE



HOW TO ORDER

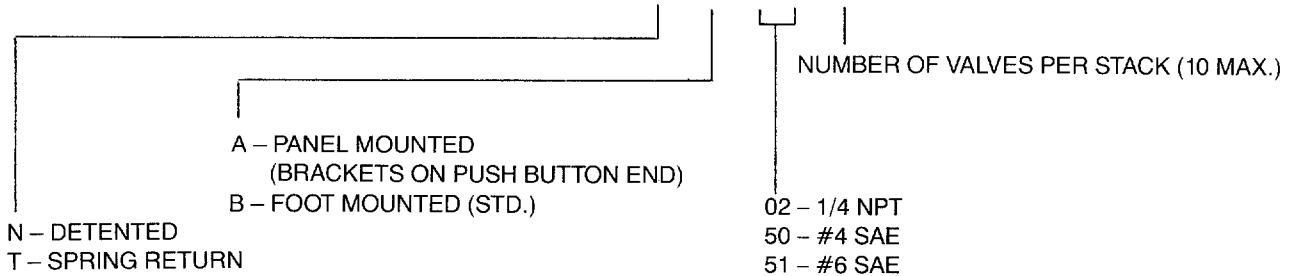
SINGLE VALVE

6-FD6-STKD-102S



STACKABLE VALVE

6-FD6-STHA-102S-2-S



9 535 233 197
HPUS AKY 016/22 US (10.94)

ROBERT BOSCH FLUID POWER CORPORATION
P.O. BOX 2025
RACINE, WISCONSIN 53401-2025 U.S.A.
Phone (414)554-7100, Fax (414)554-7117



BOSCH

PRINTED IN U.S.A.