

Section 4 Sandwich Plates

RA 09 907/07.04

The Drive & Control Company

Sandwich Plate Features

- Sizes 6 to 22
- Aluminum and ductile iron
- For full flow and test port tap-in
- No mounting kit, but set of o-rings included
- SAE, BSPP, or NPT porting

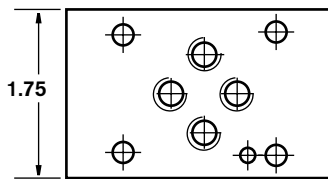
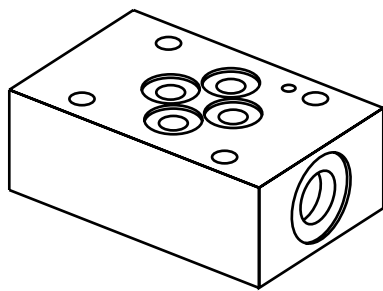


Section 4 Index

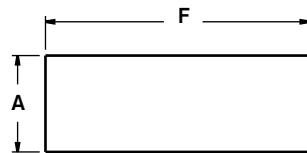
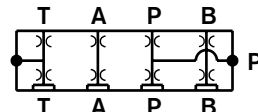
Description	Page
Tapping Plate D03 (Size 6)	51
Spacer Plate D03 (Size 6)	52
Tapping Plate D05 (Size 10)	53
Spacer Plate D05 (Size 10)	54
Tapping Plate D07 (Size 16)	55
Tapping Plate D08 (Size 22)	56

Tapping Plate D03 (Size 6)

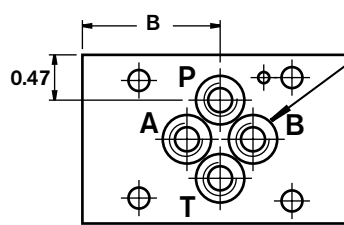
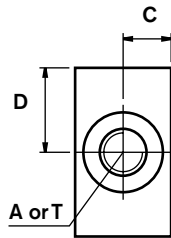
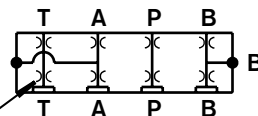
		TP6		XX	/			
Connections								
Gauge Port	P + T	= GPT					12 =	Port Style SAE BSPP
Gauge Port	A + B	= GAB					01 =	
Full Flow Port	P + T	= FPT						Material Aluminum 6061-T6, 3000 psi Ductile Iron ¹ 65-45-12, 5000 psi
Full Flow Port	A + B	= FAB						
Plug		= P						
Revision				= XX				



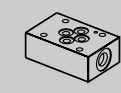
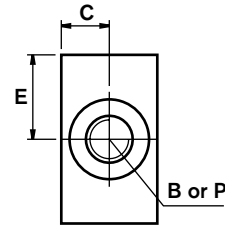
P + T Connection



A + B Connection



Threaded for 1/16-27 NPT



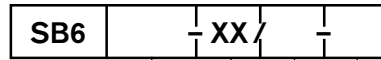
Dimension	A	B	C	D	E	F	A, B, P, T Ports
TP6GPT...12	1.00	1.44	0.50	0.88	0.88	2.75	7/16-20 -4
TP6GPT...01	1.00	1.38	0.50	0.97	0.78	2.75	1/4" BSPP
TP6GAB...12	1.00	1.44	0.50	0.88	0.88	2.75	7/16-20 -4
TP6GAB...01	1.00	1.44	0.50	0.88	0.88	2.75	1/4" BSPP
TP6FPT...12	1.50	1.38	0.75	0.75	1.02	3.00	9/16-18 -6
TP6FPT...01	1.50	1.50	0.75	0.97	0.78	3.00	3/8" BSPP
TP6FAB...12	1.50	1.41	0.75	0.88	0.88	3.00	9/16-18 -6
TP6FAB...01	1.50	1.44	0.75	0.88	0.88	3.00	3/8" BSPP

Includes (4) O-Rings, (1) Plug, and (1) Locating Pin.

1) Blackening

All dimensions in inches

Spacer Block D03 (Size 6)



Thickness, Dim. "A"

- = 3/4"
- = 1"
- = 1-1/4"
- = 1-1/2"
- = 1-3/4"
- = 2"
- = 2-1/4"
- = 2-1/2"
- = 2-3/4"
- = 3"

12 =

Port Style
SAE

Material

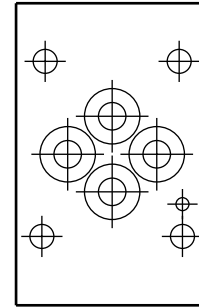
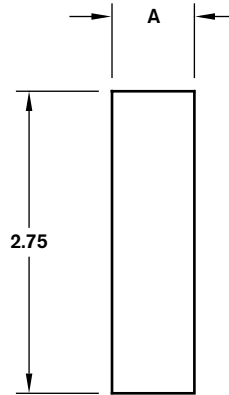
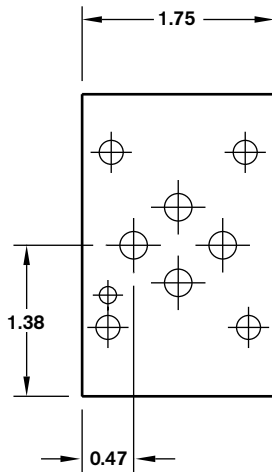
Aluminum 6061-T6, 3000 psi
Ductile Iron¹ 65-45-12, 5000 psi

A =

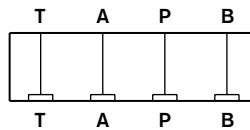
D =

XX =

Revision



D03 (Valve)



D03 (Manifold)

Includes (4) O-rings and (1) Locating Pin.

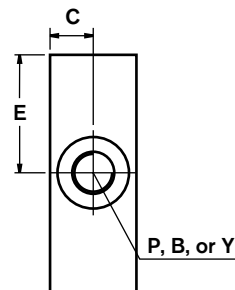
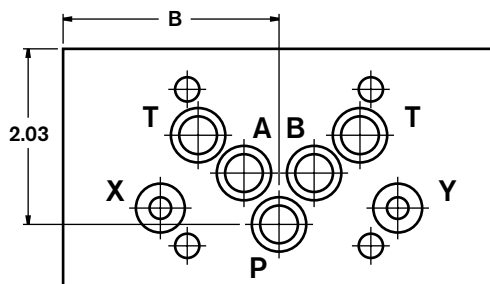
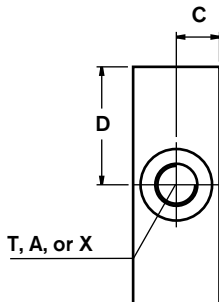
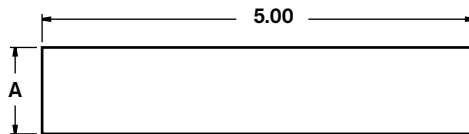
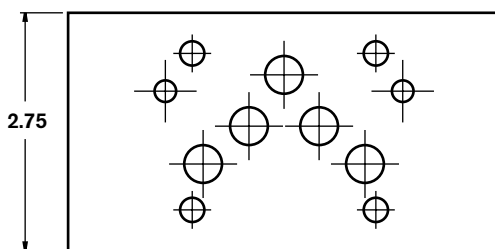
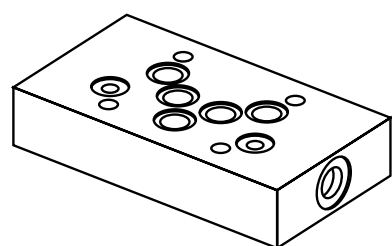
Mounting hardware is not included.

1) Blackening

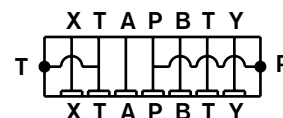
All dimensions in inches

Tapping Plate D05 (Size 10)

		TP10	XX /		
Connections		= GPT		12 =	Port Style SAE BSPP
Gauge Port	P + T	= GAB		01 =	
Gauge Port	A + B	= GXY			Material Aluminum 6061-T6, 3000 psi Ductile Iron ¹ 65-45-12, 5000 psi
Gauge Port	X + Y	= FPT**			
Full Flow Port	P + T	= FAB		A =	
Full Flow Port	A + B			D =	
Revision		= XX			



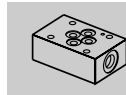
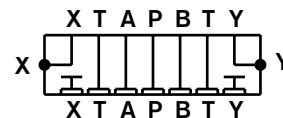
P + T Connection



A + B Connection



X + Y Connection



Dimension	A	B	C	D	E	A, B, P, T Ports
TP10GPT...12	1.00	2.50	0.50	1.00	1.20	7/16-20 -4
TP10GPT...01	1.00	2.50	0.50	1.00	1.20	1/4" BSPP
TP10GAB...12	1.00	2.50	0.50	1.37	1.37	7/16-20 -4
TP10GAB...01	1.00	2.50	0.50	1.37	1.37	1/4" BSPP
TP10GXY...12	1.00	2.50	0.50	1.85	1.85	7/16-20 -4
TP10GXY...01	1.00	2.50	0.50	1.85	1.85	1/4" BSPP
TP10FPT...12	2.00	2.75	1.00	1.00	1.20	7/8-14 -10
TP10FPT...01	2.00	2.75	1.00	1.00	1.20	1/2" BSPP
TP10FAB...12	2.00	2.50	1.00	1.37	1.37	7/8-14 -10
TP10FAB...01	2.00	2.50	1.00	1.37	1.37	1/2" BSPP

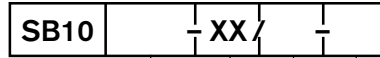
Includes (7) O-Rings and (1) Plug.

1) Blackening

**FPT option has a side tank port only

All dimensions in inches

Spacer Block D05 (Size 10)



Thickness, Dim. "A"

- = 1/2"
- = 3/4"
- = 1"
- = 1-1/4"
- = 1-1/2"
- = 1-3/4"
- = 2"
- = 2-1/4"
- = 2-1/2"
- = 2-3/4"
- = 3"

12 =

Port Style
SAE

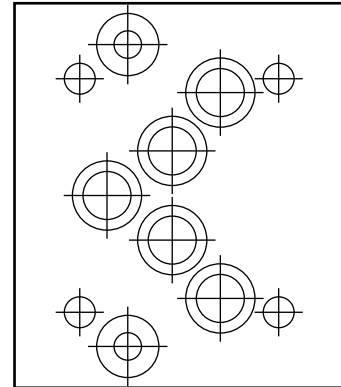
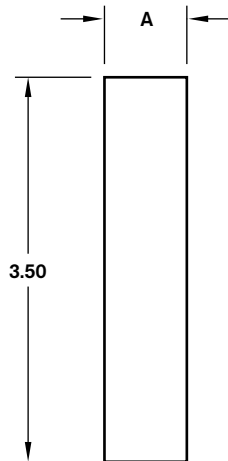
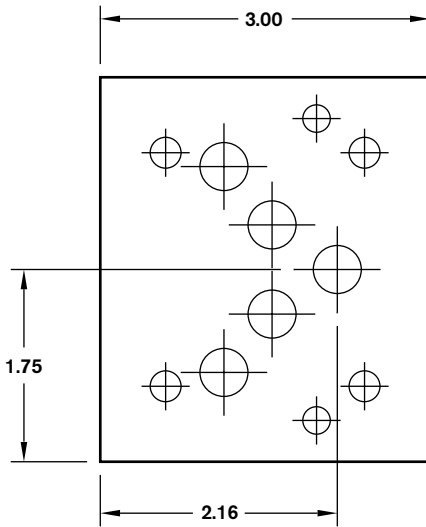
A =

D =

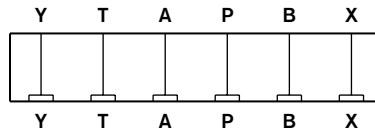
XX =

Material
Aluminum 6061-T6, 3000 psi
Ductile Iron¹ 65-45-12, 5000 psi

Revision



D05 (valve)



D05 (manifold)

Includes (7) O-rings.

Mounting hardware is not included.

1) Blackening

All dimensions in inches

Tapping Plate D07 (Size 16)

Connections

Gauge Port	P + T
Gauge Port	A + B
Gauge Port	X + Y
Full Flow Port	P + T
Full Flow Port	A + B

Revision

TP16 - XX /

= GPT
= GAB
= GXY
= FPT
= FAB

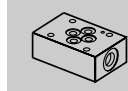
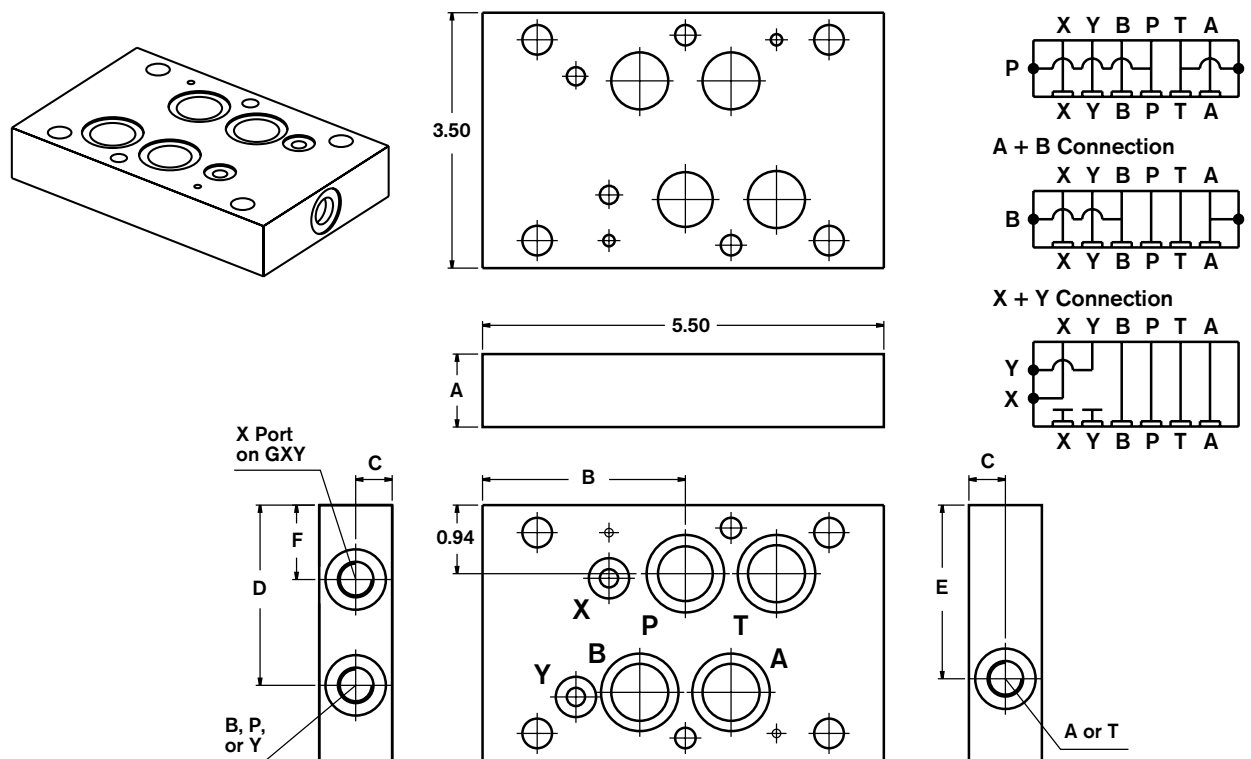
= XX

12 =
01 =

A =
D =

Port Style
SAE
BSPP

Material
Aluminum 6061-T6, 3000 psi
Ductile Iron 65-45-12, 5000 psi



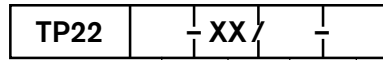
Dimension	A	B	C	D	E	F	A, B, P, T, X, Y Ports
TP16GPT...12	1.00	2.78	0.50	1.83	1.12	-	7/16-20 -4
TP16GPT...01	1.00	2.78	0.50	1.83	1.12	-	1/4" BSPP
TP16GAB...12	1.00	2.78	0.50	1.63	2.38	-	7/16-20 -4
TP16GAB...01	1.00	1.78	0.50	1.63	2.38	-	1/4" BSPP
TP16GXY...12	1.00	2.78	0.50	2.47	-	1.02	7/16-20 -4
TP16GXY...01	1.00	2.78	0.50	2.47	-	1.02	1/4" BSPP
TP16FPT...12	3.00	2.53	1.50	1.58	1.40	-	1-5/16-12 -16
TP16FPT...01	3.00	2.53	1.50	1.58	1.40	-	1" BSPP
TP16FAB...12	3.00	2.53	1.50	1.98	2.12	-	1-5/16-12 -16
TP16FAB...01	3.00	2.53	1.50	1.98	2.12	-	1" BSPP

Includes (6) O-Rings, (1) Plug, and Locating Pin.

1) Blackening

All dimensions in inches

Tapping Plate D08 (Size 22)



Connections

- Gauge Port P + T
- Gauge Port A + B
- Gauge Port X + Y
- Full Flow Port P + T
- Full Flow Port A + B

- = GPT
- = GAB
- = GXY
- = FPT
- = FAB

= XX

- 12 =
- 01 =

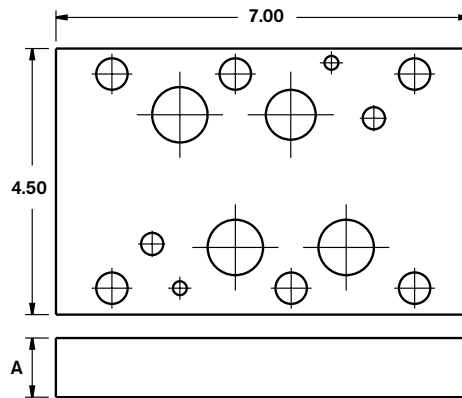
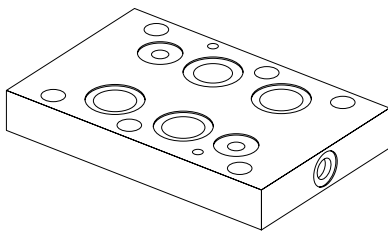
Port Style

- SAE
- BSPP

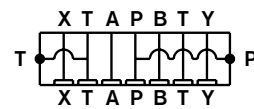
Material

- A = Aluminum 6061-T6, 3000 psi
- D = Ductile Iron¹ 65-45-12, 5000 psi

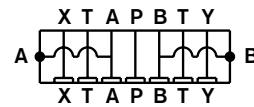
Revision



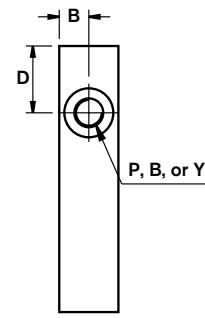
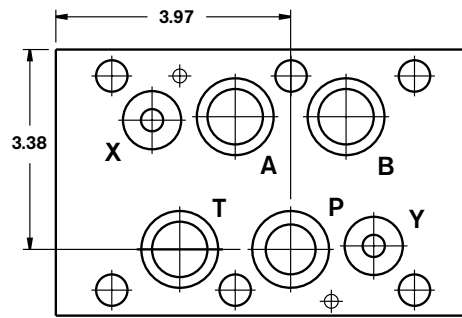
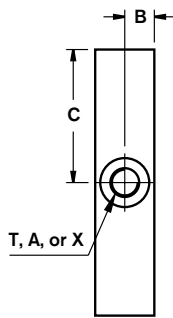
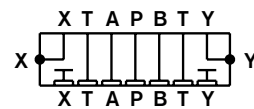
P + T Connection



A + B Connection



X + Y Connection



Dimension	A	B	C	D	A, B, P, T, X, Y Ports
TP22GPT...12	1.00	0.50	3.38	2.25	7/16-20 -4
TP22GPT...01	1.00	0.50	3.38	2.25	1/4" BSPP
TP22GAB...12	1.00	0.50	2.25	1.13	7/16-20 -4
TP22GAB...01	1.00	0.50	2.25	1.13	1/4" BSPP
TP22GXY...12	1.00	0.50	1.19	3.31	7/16-20 -4
TP22GXY...01	1.00	0.50	1.19	3.31	1/4" BSPP
TP22FPT...12	4.00	2.00	2.82	1.73	1-5/8-12 -20
TP22FPT...01	4.00	2.00	2.82	2.00	1-1/4" BSPP
TP22FAB...12	4.00	2.00	4.67	1.70	1-5/8-12 -20
TP22FAB...01	4.00	2.00	2.50	1.70	1-1/4" BSPP

Includes (6) O-Rings, (1) Plug, and (1) Locating Pin.

1) Blackening

All dimensions in inches