

Ersatzteile

Spare parts

Pièces de rechange

	▶	▶▶	▶▶▶			
	1. Blase 1.1 mit Gasventil 1.2 und Dichtungen für Ölventil 1.3	1. Bladder 1.1 with gas valve 1.2 and seals for oil valve 1.3	1. Vessie 1.1 avec valve de gonflage 1.2 et joints pour valve d'huile 1.3			
Vol. [l]	1	4	10	20	35	50
Nitril (NBR)	1 535 490 021	1 535 490 013	1 535 490 015	1 535 490 035	1 535 490 078	1 535 490 082
Butyl (IIR)	1 535 490 027	1 535 490 029	1 535 490 031	1 535 490 057	1 535 490 079	1 535 490 083
Hydrin (ECO)	–	1 535 490 063	1 535 490 065	1 535 490 074	1 535 490 080	1 535 490 084
Special*	–	–	–	–	1 535 490 081	1 535 490 085

	▶	▶▶	▶▶▶			
	1.2 Gasventil	1.2 Gas valve	1.2 Valve de gonflage			
Vol. [l]	1	4	10	20	35	50
		1 537 010 127		Spezial * 1 537 010 187		

* Gasventil zum Nachschalten von Stickstoffflaschen
 Gas valve for downstream connection of nitrogen cylinders
 Valve de gonflage pour l'adjonction de bouteilles additionnelles d'azote

	▶	▶▶	▶▶▶			
	1.3 Dichtungen für Ölventil	1.3 Seals for oil valve	1.3 Joints pour valve d'huile			
Vol. [l]	1	4	10	20	35	50
Set (NBR)	1 537 010 128	1 537 010 130	1 537 010 132			
Set (IIR)	1 537 010 129	1 537 010 131	1 537 010 133			

	▶	▶▶	▶▶▶			
	2. Ölventil komplett	2. Oil valve, complete	2. Valve d'huile complète			
Vol. [l]	1	4	10	20	35	50
Metr.	1 537 410 006	1 537 413 000	1 537 413 012			
Zoll	1 537 410 016	1 537 413 003	1 537 413 013			

	▶	▶▶	▶▶▶			
	3. Hutmutter	3. Cap nut	3. Ecrou borgne			
Vol. [l]	1	4	10	20	35	50
		1 533 317 004				

	▶	▶▶	▶▶▶			
	4. Sechskantmutter	4. Hexagon nut	4. Ecrou à six pans			
Vol. [l]	1	4	10	20	35	50
		1 533 300 004				

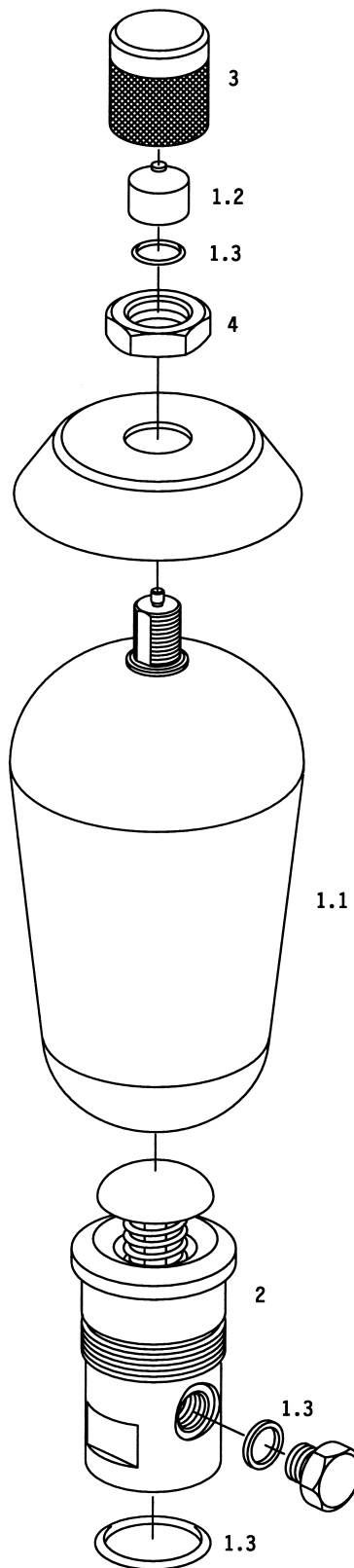
	▶	▶▶	▶▶▶			
	5. Dichtring	5. Sealing ring	5. Joint			
Vol. [l]	1	4	10	20	35	50
NBR	1 530 221 022	1 530 221 020	1 530 290 024			
IIR	1 530 221 024	1 530 221 028	1 530 290 025			

	▶	▶▶	▶▶▶			
	6. Stützring	6. Bearing ring	6. Bague d'appui			
Vol. [l]	1	4	10	20	35	50
		1 530 220 059	1 530 220 057	–		

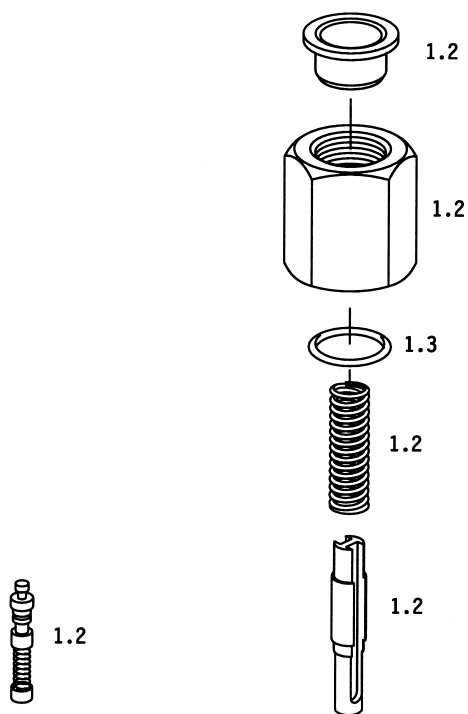
	▶	▶▶	▶▶▶			
	7. Rundmutter	7. Round nut	7. Ecrou cylindrique			
Vol. [l]	1	4	10	20	35	50
		1 533 342 010	1 533 342 009	1 533 342 013		

	▶	▶▶	▶▶▶			
	8. Unterlegscheibe	8. Shim	8. Rondelle			
Vol. [l]	1	4	10	20	35	50
		1 530 102 010	1 530 102 011	–		

Standard
Standard
Standard

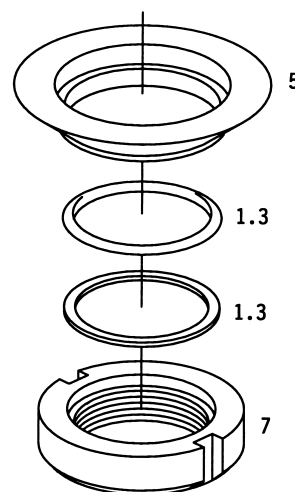
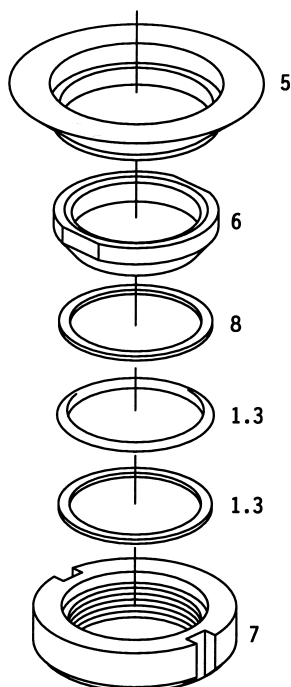


Spezial
Special
Spécial

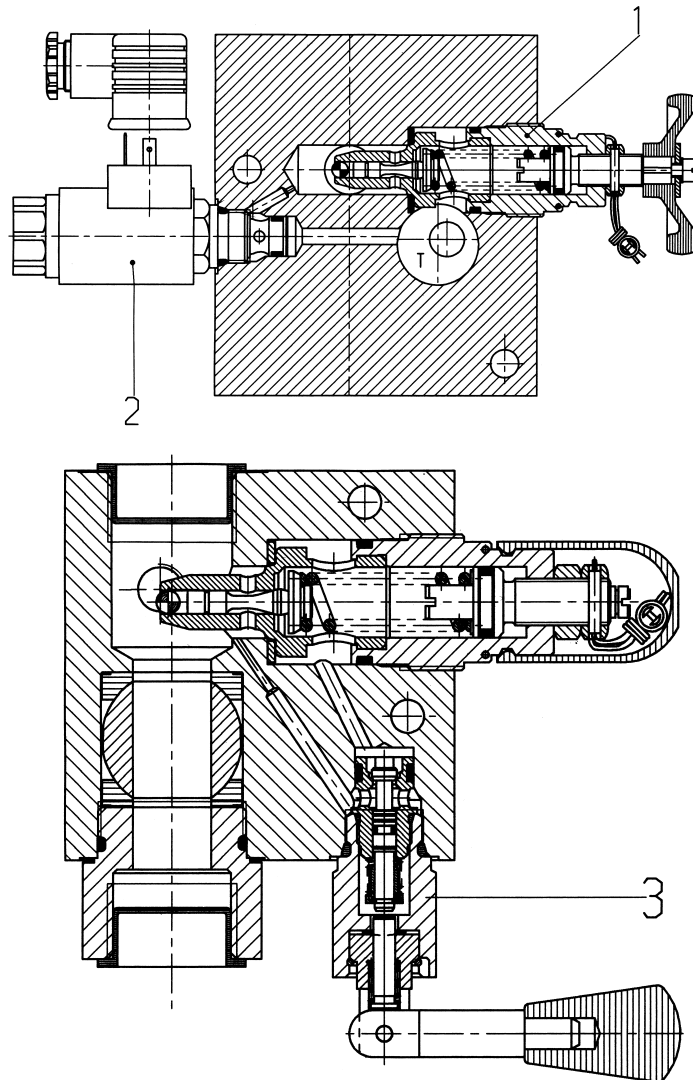


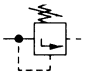
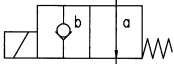
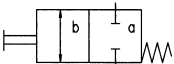


1 l; 4 l

10 l ... 50 l



Sicherheits- und Absperrblöcke
 Safety and shut-off blocks
 Blocs de sécurité



Sinnbild Symbol Symbole	Benennung Description Désignation		Ⓢ
1 	Ventile für Blockeinbau Cartridge valves Valves cartouches	0 532 004...	siehe Seite 52 see page 52 voir page 52
2 	Magnetventil 2/2 stromlos offen Solenoid valve 2/2, open without flow Electrovanne 2/2 ouverte sans courant	24 V DC 115 V/60 Hz AC	1 537 410 071 1 537 410 072
3 	Wegeventil 2/2 manuell betätigt Directional control valve 2/2, manually operated Distributeur 2/2 à commande manuelle		1 537 410 074
	Dichtungssatz Set of seals Pochette de joints	Magnet und Wegeventil Solenoid and directional control valve Electro-distributeur	1 537 010 304
	Dichtungssatz für Sicherheitsblöcke VAW 20, VAW 32 Set of seals for Safety blocks VAW 20, VAW 32 Pochette de joints pour Blocs de sécurité VAW 20, VAW 32		1 537 010 300