

## Relief valve

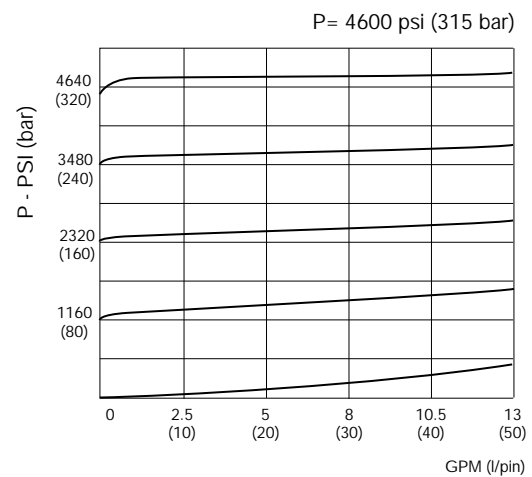
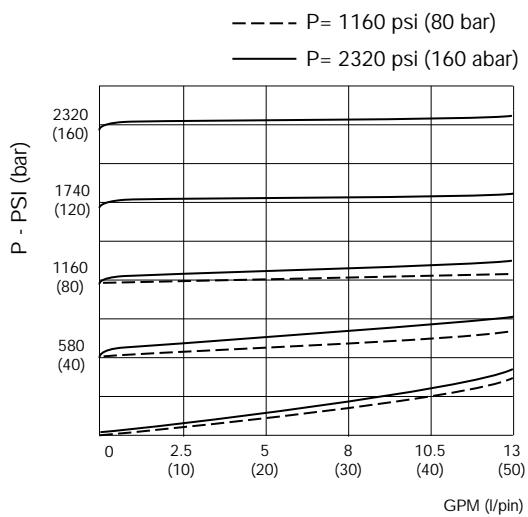
- Direct operated
- D03 (NG 6) mounting

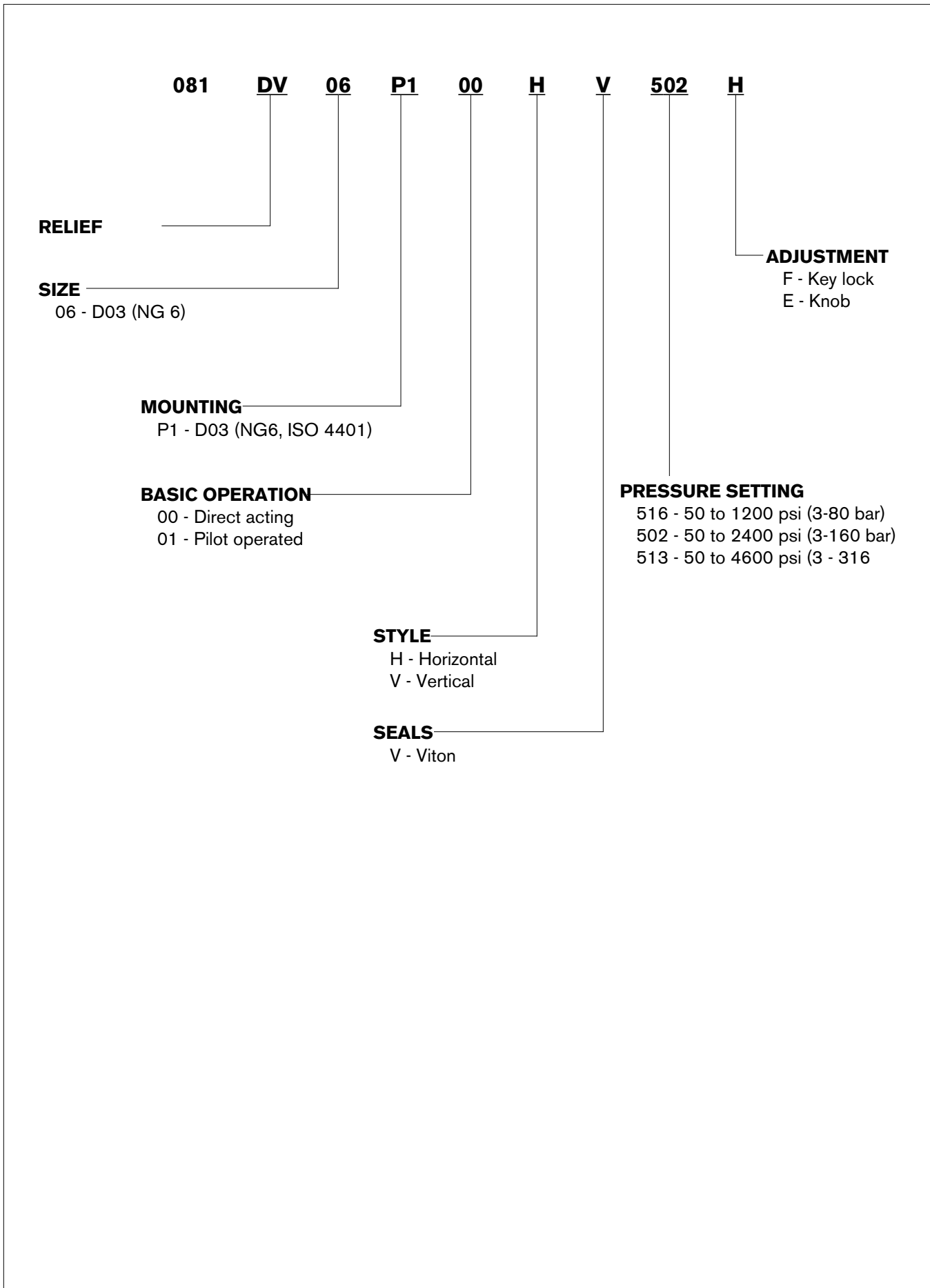


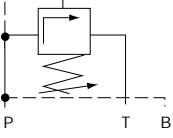
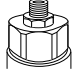

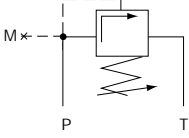
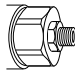
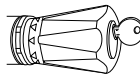
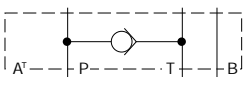
Specifications	
Valve function	Pressure relief valve, direct operated
Mounting type	Subplate D03 (NG 6), ISO 4401
Mounting position	Not restricted
Fluid	Mineral-oil or fluid HFA / B / C / D
Viscosity	60... 2500 SUS (10...500 cst)
Fluid-temperature	-13 to 176°F (-25 to 80°C)
Filtration	Contamination class 10, according to NAS 1638 can be realized with filter $\beta_{25} = 75$
Seals	Viton
Max. setting pressure	1200, 2400, or 4600 PSI (80, 160 or 315 bar)
Max. operating pressure	4600 PSI (315 bar)
Max. flow	13 GPM (50 l/min.)

### Performance characteristics

$v = 35 \text{ mm}^2/\text{s}$



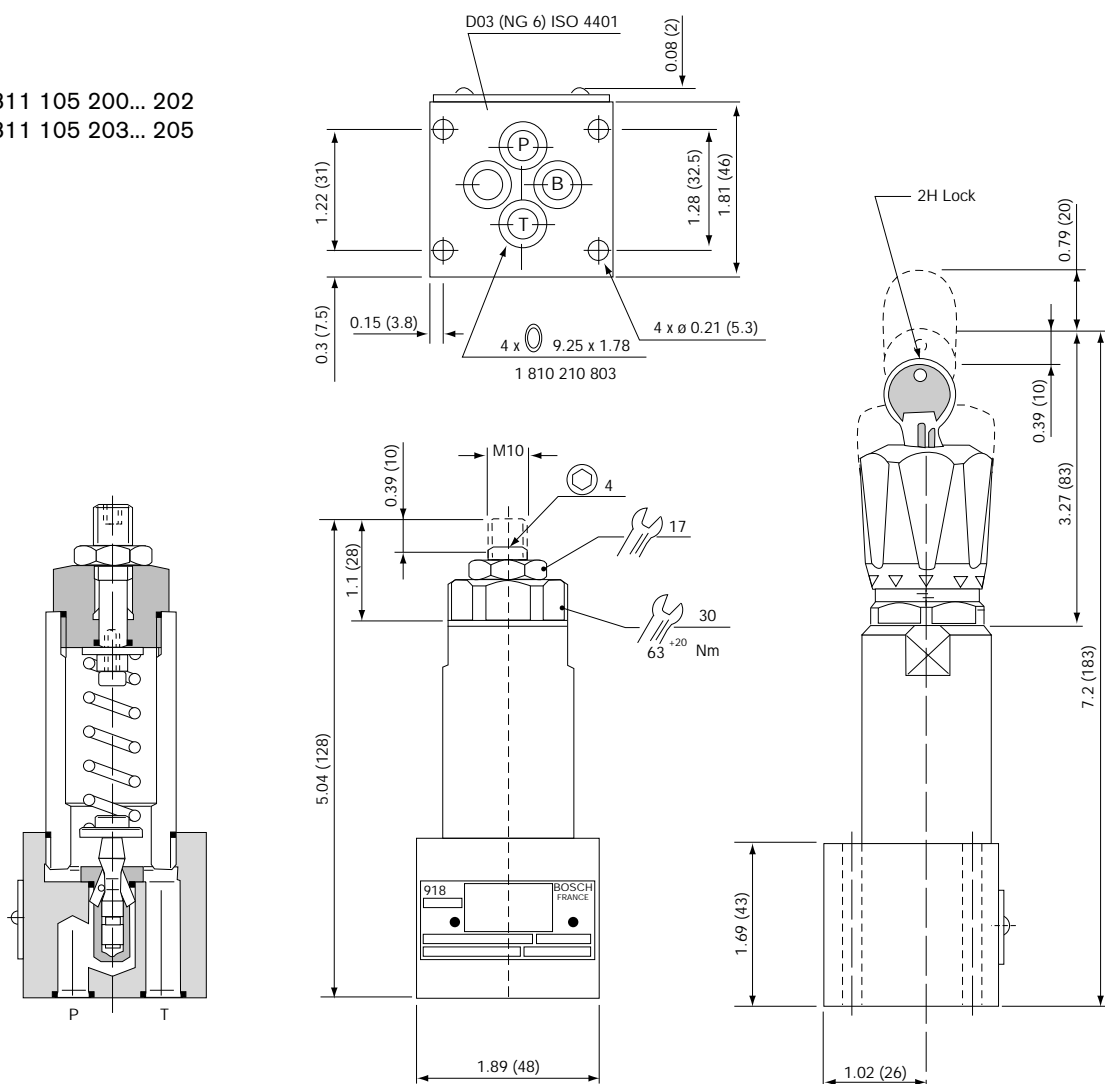


Symbol	Adjustment	P. nom. PSI (bar)	Lbs. (Kg)	⊕	
		1200 (80) 2400(160) 4600(315)	2.43 (1.1)	0 811 105 200 0 811 105 201 0 811 105 202	
		1200 (80) 2400(160) 4600(315)	0 811 105 203 0 811 105 204 0 811 105 205		
			1200 (80) 2400(160) 4600(315)	3.09 (1.4)	0 811 105 206 0 811 105 207 0 811 105 208
			1200 (80) 2400(160) 4600(315)	0 811 105 209 0 811 105 210 0 811 105 211	
			Intermediate plate with by-pass check valve	0 811 024 200	

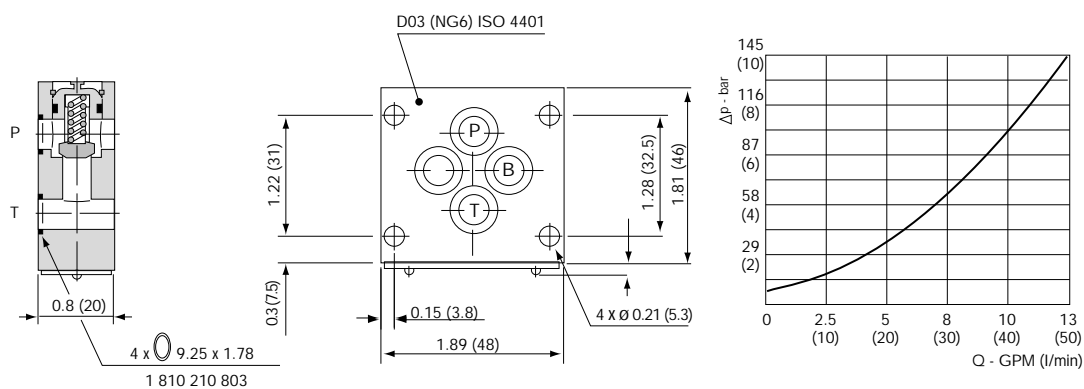
**Dimensions**

Inches (millimeters)

- ⊕ 0 811 105 200... 202
- ⊕ 0 811 105 203... 205

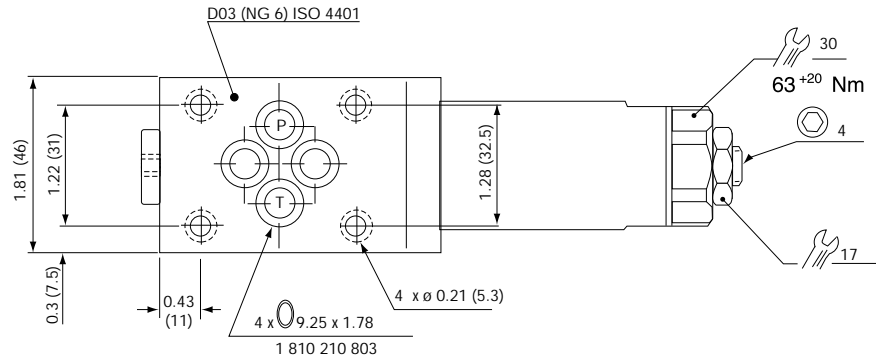


- ⊕ 0 811 024 200

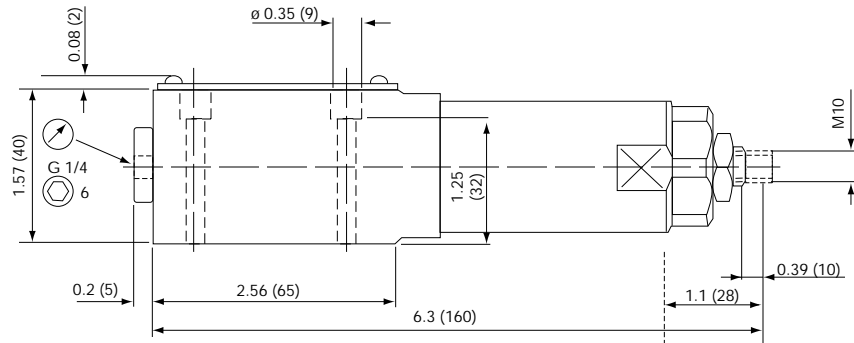


**Dimensions**

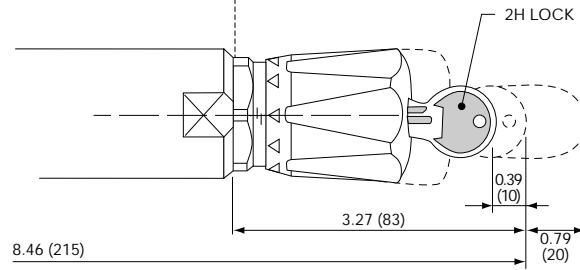
Inches (millimeters)



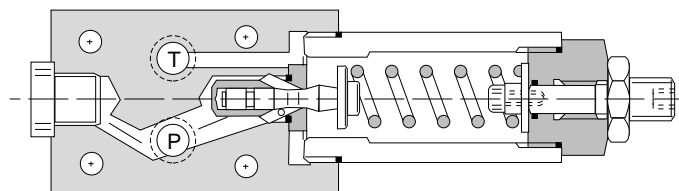
- ⊗ 0 811 105 206
- ⊗ 0 811 105 207
- ⊗ 0 811 105 208



- ⊗ 0 811 105 209
- ⊗ 0 811 105 210
- ⊗ 0 811 105 211



**Function**



## Relief valves

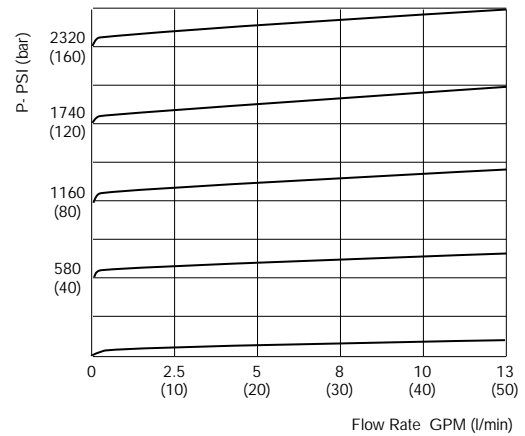
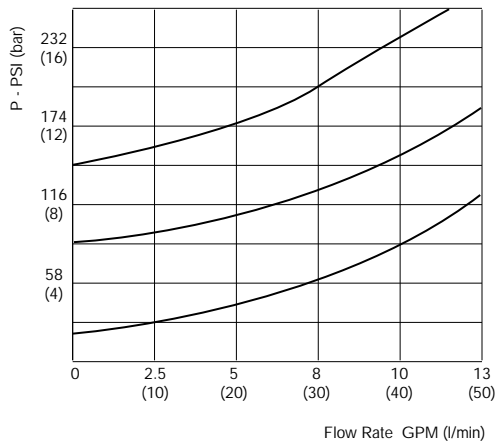
- Pilot operated
- D03 (NG 6) mounting

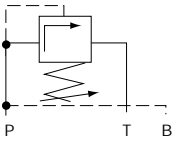
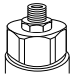

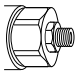
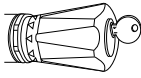
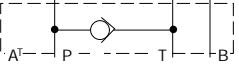


Specifications	
Valve function	Pressure relief valve, pilot operated
Mounting type	Subplate D03 (NG 6), ISO 4401
Mounting position	Not restricted
Fluid	Mineral-oil or fluid HFA / B / C / D
Viscosity	60... 2500 SUS (10...500 cst)
Fluid-temperature	-13 to 176°F (-25 to 80°C)
Filtration	Contamination class 10, according to NAS 1638 can be realized with filter $\beta_{25} = 75$
Seals	Viton
Max. setting pressure	1200, 2400, or 4600 PSI (80, 160 or 315 bar)
Max. operating pressure	4600 PSI (315 bar)
Max. flow	13 GPM (50 l/min.)

### Performance characteristics

$v = 35 \text{ mm}^2/\text{s}$

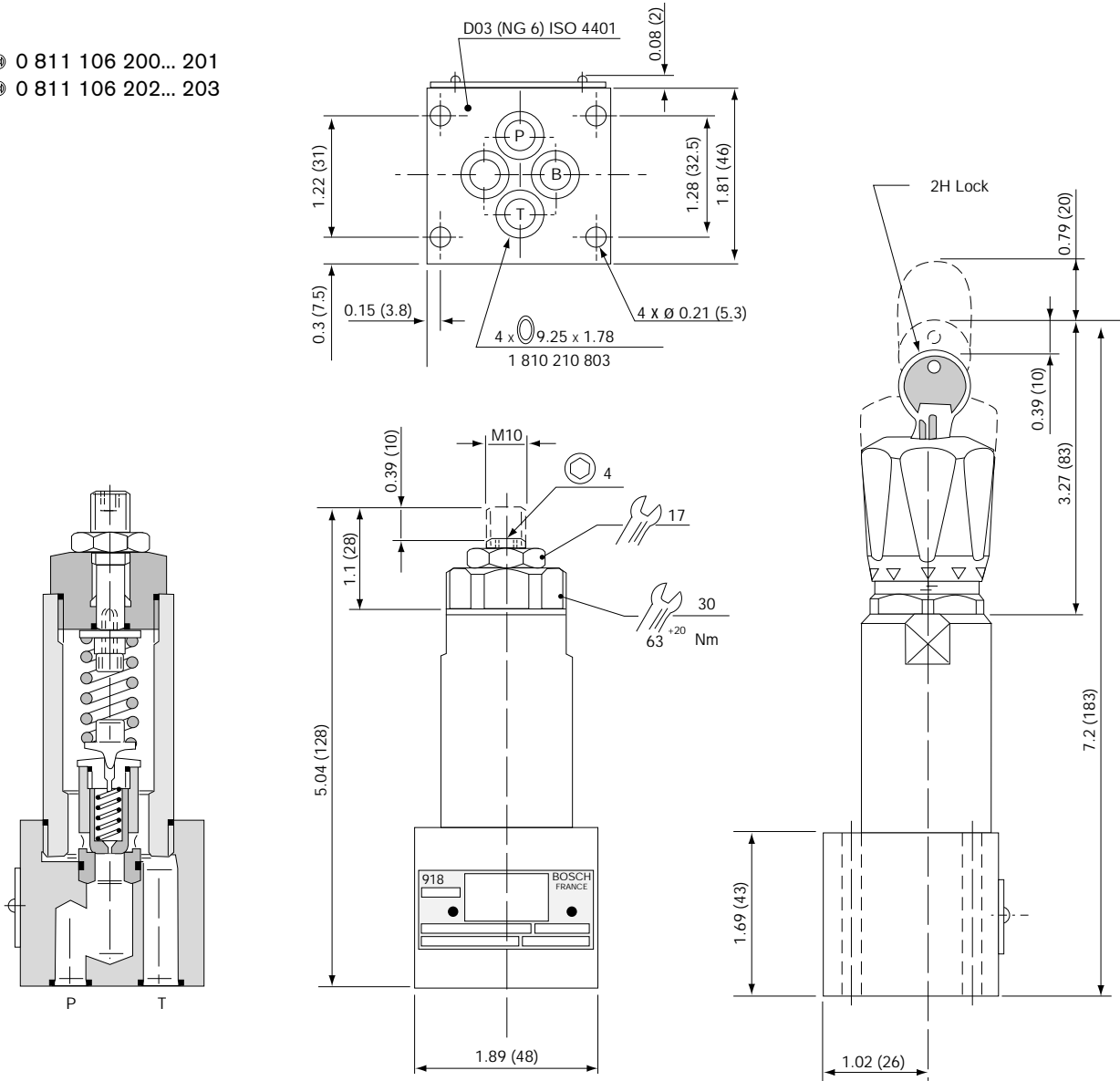


Symbol	Adjustment	P. nom. PSI (bar)	Lbs. (Kg)	⊕
		1200 (80) 2400(160)	2.43 (1.1)	<b>0 811 106 200</b> <b>0 811 106 201</b>
		1200 (80) 2400(160)		<b>0 811 106 202</b> <b>0 811 106 203</b>
		1200 (80) 2400(160)	3.09 (1.4)	<b>0 811 106 204</b> <b>0 811 106 205</b>
		1200 (80) 2400(160)		<b>0 811 106 206</b> <b>0 811 106 217</b>
	Intermediate plate with by-pass check valve (see page 13 for specifications)	<b>0 811 024 200</b>		

**Dimensions**

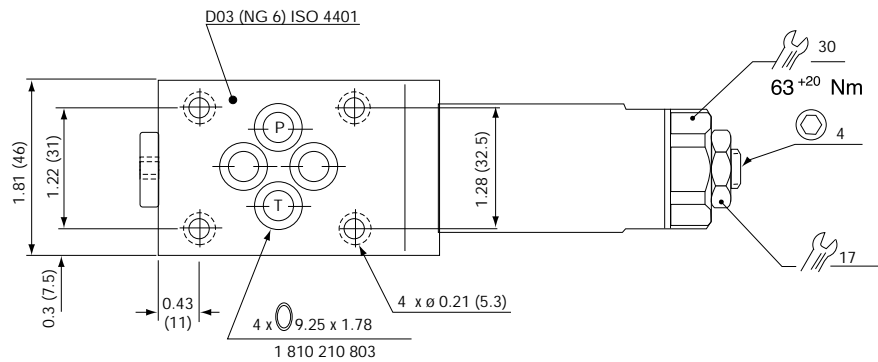
Inches (millimeters)

- ⊗ 0 811 106 200... 201
- ⊗ 0 811 106 202... 203

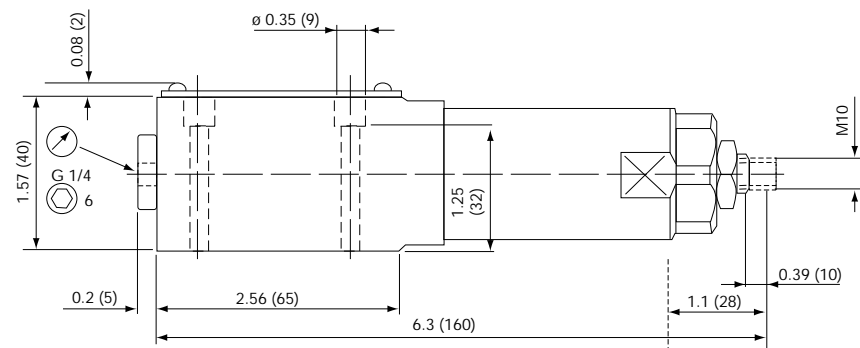


**Dimensions**

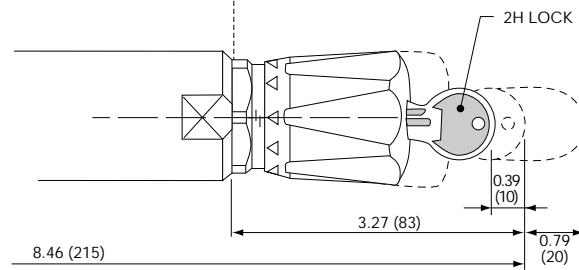
Inches (millimeters)



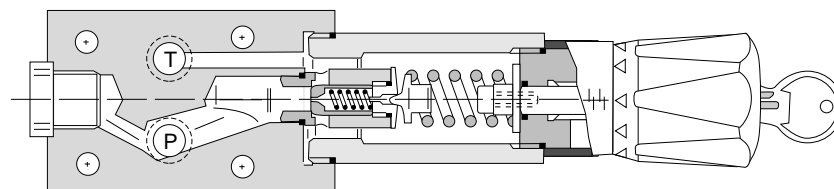
- ⊗ 0 811 106 204
- ⊗ 0 811 106 205



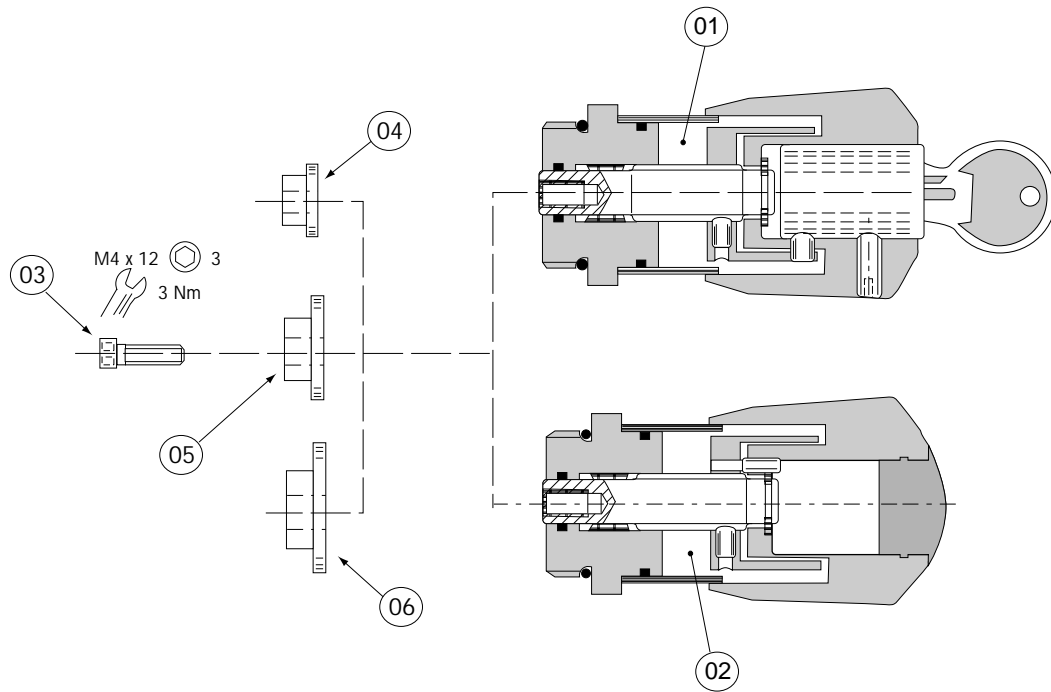
- ⊗ 0 811 106 206
- ⊗ 0 811 106 207



**Function**



**Accessories**



Valve		Kit	
		Parts	⊕
⊕ 0 811 106 200... 207	Pressure relief valve, pilot operated	1 x 01 + 1 x 03 1 x 04	<b>0 817 001 803</b>
		1 x 02 + 1 x 03 1 x 04	<b>0 817 001 808</b>
⊕ 0 811 105 200... 211	Pressure relief valve, direct operated	1 x 01 + 1 x 03 1 x 05	<b>0 817 001 803</b>
		1 x 02 + 1 x 03 1 x 05	<b>0 817 001 808</b>
⊕ 0 811 148 200... 223 ⊕ 0 811 101 200... 207	Pressure reducing valve / Sequence valve	1 x 01 + 1 x 03 1 x 06	<b>0 817 001 803</b>
		1 x 02 + 1 x 03 1 x 06	<b>0 817 001 808</b>