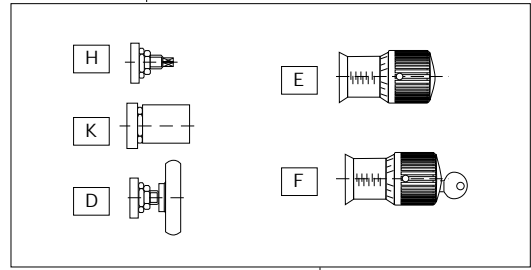


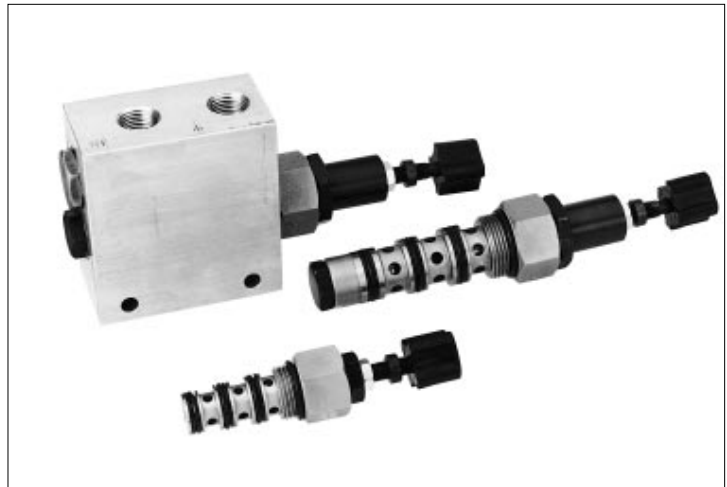
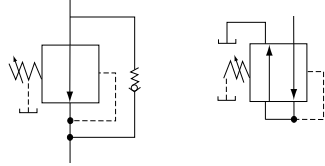
081 VV 06 P1 00 N 503 H - AO  
 NG 06 - ISO 4401



				PSI (bar)			
00			NG 6	502	44... 2300 (3... 160)	H	<b>0 811 104 100</b>
				503	87... 4570 (6... 315)	H	<b>0 811 104 101</b>
				502	44... 2300 (3... 160)	K	<b>0 811 104 102</b>
				503	44... 4570 (3... 315)	K	<b>0 811 104 103</b>
				502	44... 2300 (3... 160)	E	<b>0 811 104 104</b>
				503	44... 4570 (3... 315)	E	<b>0 811 104 105</b>
				502	44... 2300 (3... 160)	F	<b>0 811 104 106</b>
				503	44... 4570 (3... 315)	F	<b>0 811 104 107</b>
				502	44... 2300 (3... 160)	D	<b>0 811 104 108</b>
				503	44... 4570 (3... 315)	D	<b>0 811 104 109</b>
		NG 6	502	44... 2300 (3... 160)	H	<b>0 811 104 110</b>	
			503	44... 4570 (3... 315)	H	<b>0 811 104 111</b>	
			502	44... 2300 (3... 160)	K	<b>0 811 104 112</b>	
			503	44... 4570 (3... 315)	K	<b>0 811 104 113</b>	
			502	44... 2300 (3... 160)	E	<b>0 811 104 114</b>	
			503	44... 4570 (3... 315)	E	<b>0 811 104 115</b>	
			502	44... 2300 (3... 160)	F	<b>0 811 104 116</b>	
		NG 6	502	44... 2300 (3... 160)	H	<b>0 811 104 118</b>	
			503	44... 4570 (3... 315)	H	<b>0 811 104 119</b>	
			502	44... 2300 (3... 160)	K	<b>0 811 104 120</b>	
			503	44... 4570 (3... 315)	K	<b>0 811 104 121</b>	
	Low pressure						
	High pressure						
		Cover for main stage		<b>1 815 500 252</b>			
		M5 x 16 DIN 912 - 10.9		<b>2 910 151 158</b>			

## Reducing / Relieving

- Direct acting
- 3000 PSI
- #6, #10 & #12 SAE
- 6 GPM & 20 GPM



### Application

Reducing valves are used to limit the pressure in one circuit while another circuit, in parallel, is operating at a higher pressure. It senses the downstream pressure and will block the oil flow when the pressure reaches the valve setting. This valve also has a relieving feature. Should the downstream pressure exceed the valve setting because of increased load on the actuator, the spool will continue to shift and vent oil from the downstream circuit to tank to maintain the set pressure.

