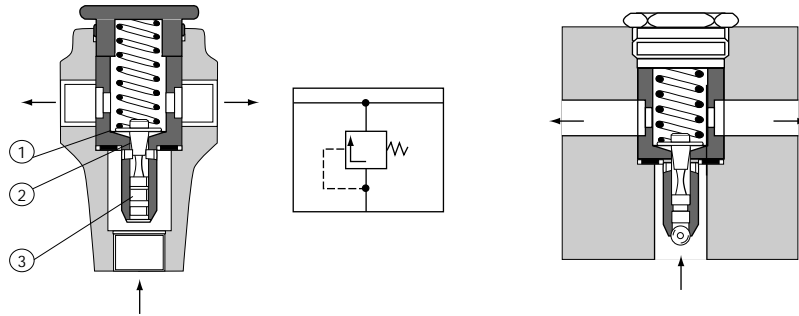


Relief valves

- Direct acting
- Inline and cartridge

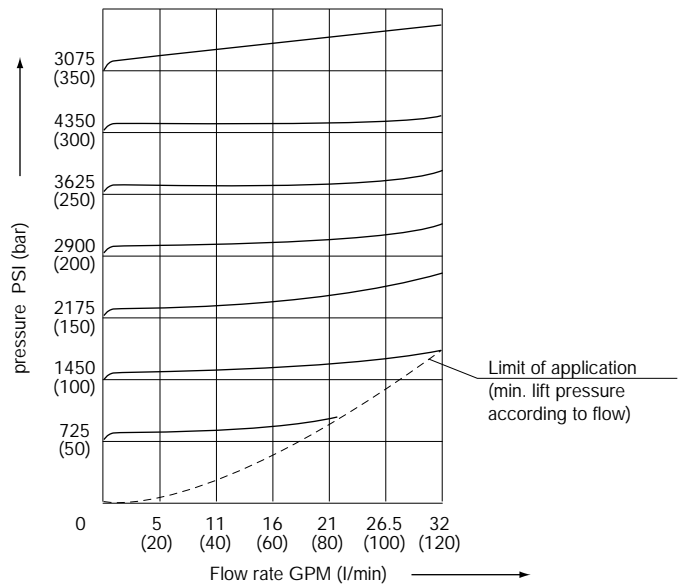
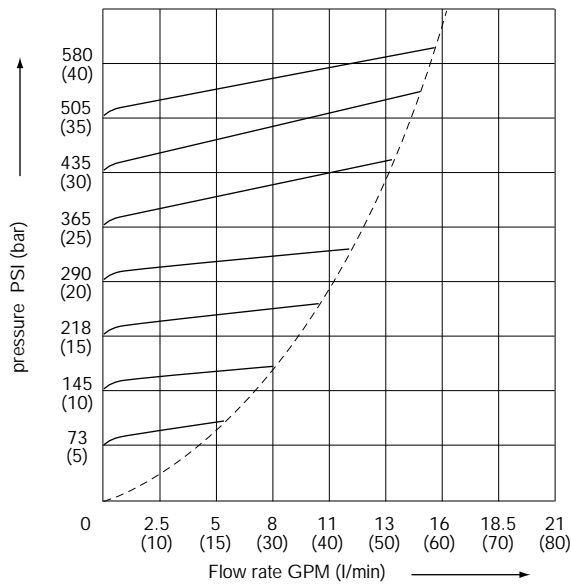


- ① Poppet
- ② Valve seat
- ③ Damping piston



Performance characteristics

measured at viscosity
 $\nu = 35 \text{ mm}^2/\text{s}$



Limit of application
 (min. lift pressure
 according to flow)



0532

VA

51

N

220

H

RELIEF VALVE
VA style

MOUNTING
51 - Inline mounted #8
SAE

SEALS
N - Buna

ADJUSTMENT
D - Handwheel
H - Fixed
K - Stem

PRESSURE SETTING

Fixed

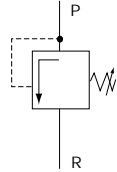
- 220 psi (15 bar)
- 500 psi (35 bar)
- 750 psi (50 bar)
- 1000 psi (70 bar)
- 1500 psi (100 bar)
- 2000 psi (140 bar)
- 2500 psi (170 bar)
- 2750 psi (190 bar)
- 3000 psi (210 bar)
- 3600 psi (250 bar)
- 4300 psi (300 bar)




Adjustable

- 15-500 psi (1-35 bar)
- 200-1000 psi (15-70 bar)
- 200-2100 psi (15-150 bar)
- 750-4300 psi (50-300 bar)

Relief valves

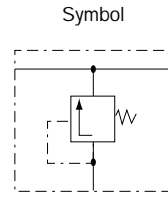
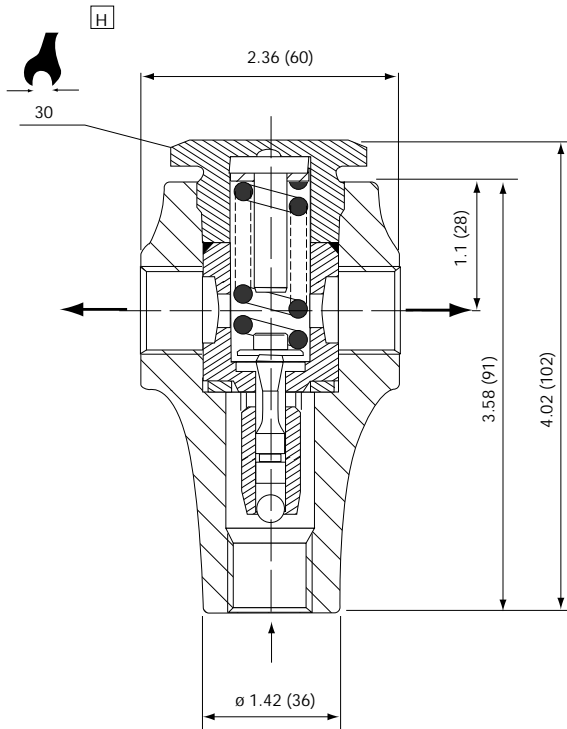
- Inline mounting
- 8 SAE



Description	Pressure psi (bar)	Weight lbs (kg)	Type	Part number
Fixed setting H	220 (15)	2 (0.9)		9 530 232 110
	500 (30)			9 530 232 111
	750 (50)			9 530 232 112
	1000 (70)			9 530 232 113
	1500 (100)			9 530 232 114
	2000 (140)			9 530 232 115
	2500 (170)			9 530 232 116
	2750 (190)			9 530 232 117
	3000 (210)			9 530 232 118
	3600 (250)			9 530 232 119
	4300 (300)			9 530 232 120
Stem K	15-500 (1-35)	2.2 (1.0)		9 530 232 054
	200-1000 (15-70)			9 530 232 055
	200-2100 (15-150)			9 530 232 056
	750-4300 (50-300)			9 530 232 057
Handwheel D	15-500 (1-35)	2.6 (1.2)		9 530 232 008
	200-1000 (15-70)			9 530 232 009
	200-2100 (15-150)			9 530 232 010
	750-4300 (50-300)			9 530 232 011

Dimensions

Inches (millimeters)



Ports #8 SAE (3/4-16)

