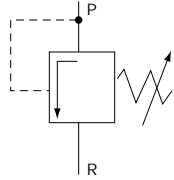





Relief valves

- Cartridge
- Thread M 30 x 1.5



Description	Pressure psi (bar)	Weight lbs (kg)	Type	Part number
Fixed setting H	220 (15)	0.5 (0.2)		9 530 232 211
	500 (30)			9 530 232 212
	750 (50)			9 530 232 213
	1000 (70)			9 530 232 214
	1500 (100)			9 530 232 215
	2000 (140)			9 530 232 216
	2500 (170)			9 530 232 217
	2750 (190)			9 530 232 218
	3000 (210)			9 530 232 219
	3600 (250)			9 530 232 220
	4300 (300)			9 530 232 221
Stem K	15-500 (1-35)	0.7 (0.3)		9 530 232 155
	200-1000 (15-70)			9 530 232 156
	200-2100 (15-150)			9 530 232 157
	750-4300 (50-300)			9 530 232 158
Handwheel D	15-500 (1-35)	0.9 (0.4)		9 530 232 020
	200-1000 (15-70)			9 530 232 021
	200-2100 (15-150)			9 530 232 022
	750-4300 (50-300)			9 530 232 023

Dimensions

Inches (millimeters)

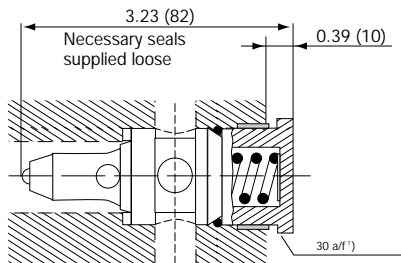


Fig. 1

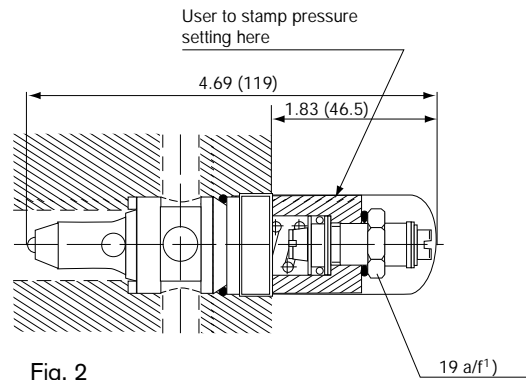


Fig. 2

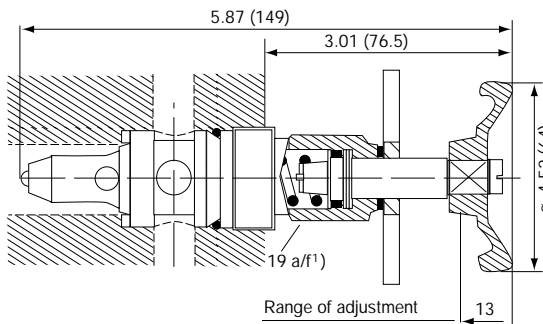


Fig. 3

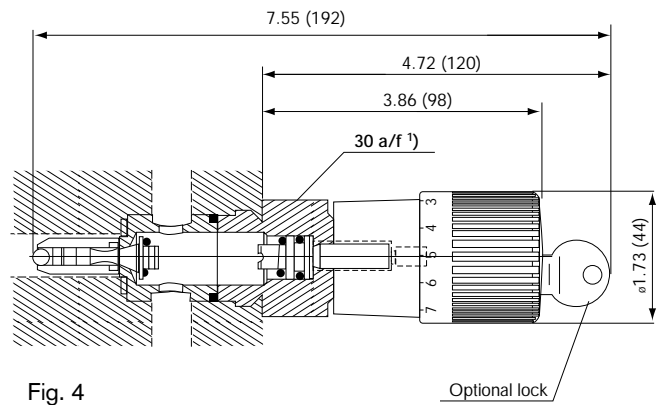


Fig. 4

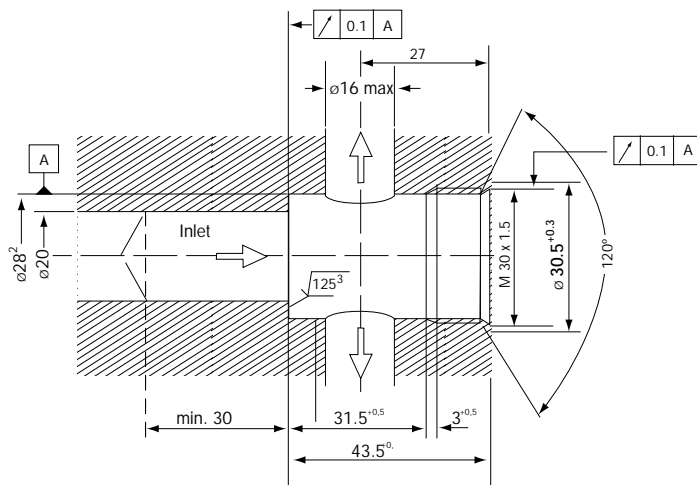


Fig. 5
Mounting requirements

a/f-Across flats

- 1) Tightening torque 70+30 Nm
- 2) $28.02 \pm_{0}^{.03}$ tolerance to be held for depth of 27 mm.
- 3) Finish to be 125 μ in