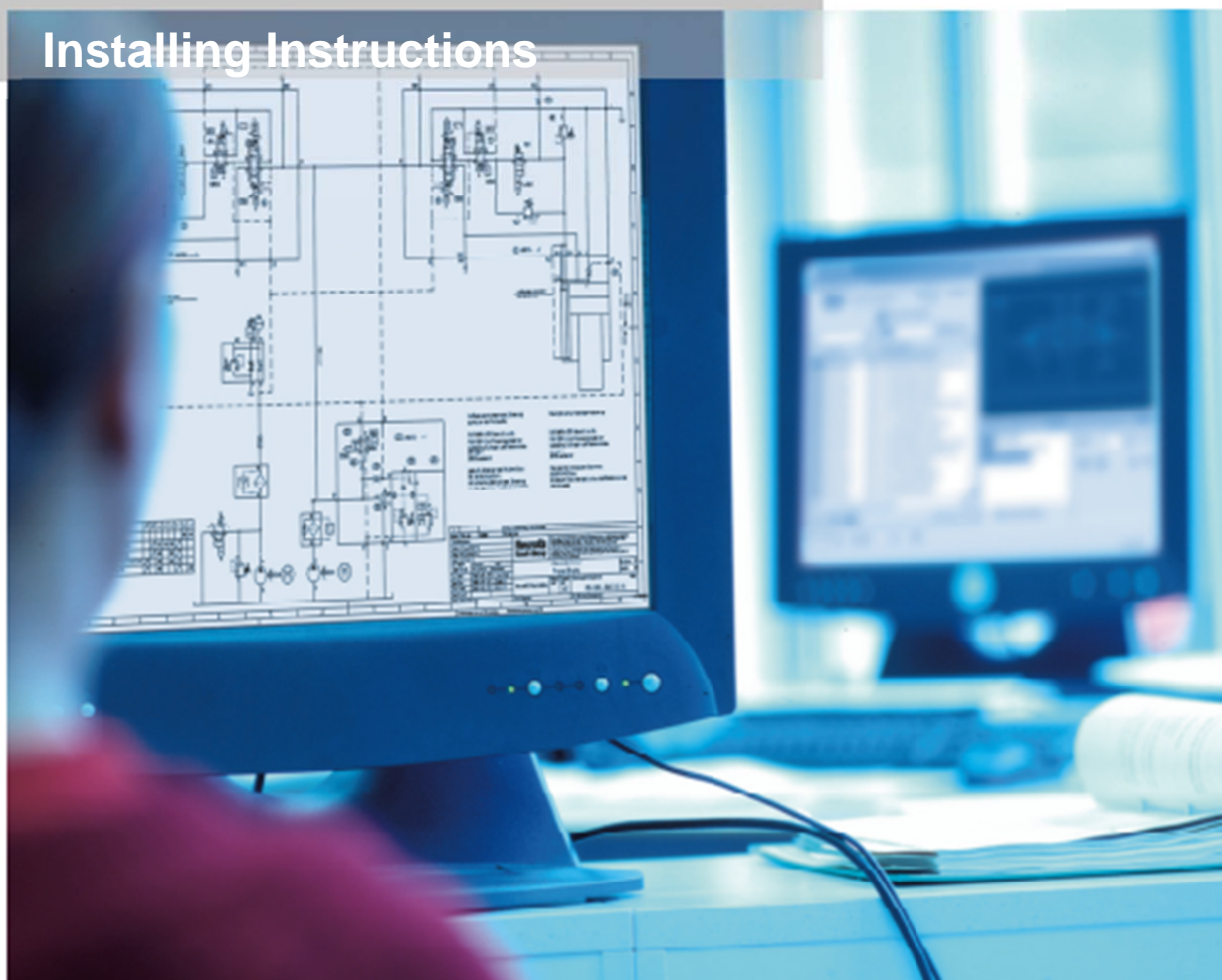


# D&C Scheme Editor 4.1

## Installing Instructions



# 1 Notice

## 1.1 Supported Operating Systems

The D&C Scheme Editor is tested to support the following 32-bit and 64-bit operating systems:

- Microsoft® Windows XP®
- Microsoft® Windows Vista®
- Microsoft® Windows 7®

## 1.2 Necessary User Privileges

You need administrator privileges to install the D&C Scheme Editor.

### Notice 1:

The Application needs the Microsoft® .NET Frameworks 4.0 to run. The setup checks if the installation of this framework is necessary.

### Notice 2:

For the function “Add to D&C Scheme Editor” in the Bosch Rexroth pneumatics catalog and the configurators a file type association is created.

## 1.3 Product Page

The product page supports the setup routine, the newest release notes, an application manual and a functional overview. You can find the product page at:

[www.boschrexroth.com/DnC-Scheme-Editor](http://www.boschrexroth.com/DnC-Scheme-Editor)

## 1.4 Contact

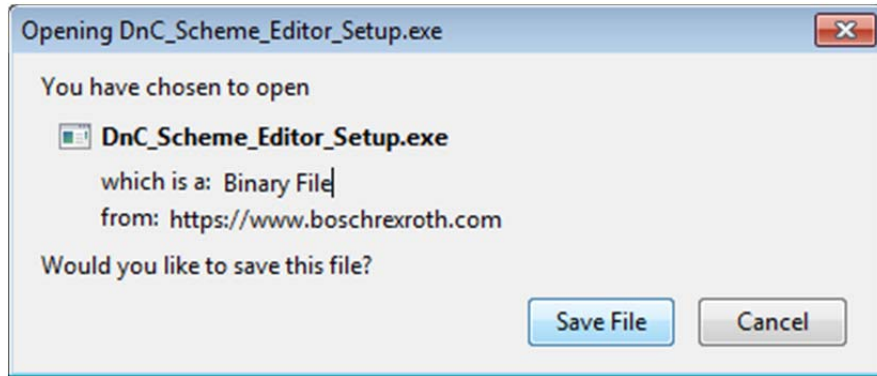
For questions regarding installing or using the application please contact us at:

[support.dnc-scheme-editor@boschrexroth.de](mailto:support.dnc-scheme-editor@boschrexroth.de)

## 2 Get D&C Scheme Editor

You can download the D&C Scheme Editor from our product page [www.boschrexroth.com/DnC-Scheme-Editor](http://www.boschrexroth.com/DnC-Scheme-Editor) using the provided download link.

We recommend you to save the setup to your hard disk using the **Save File** Button of your internet browser file download dialog:

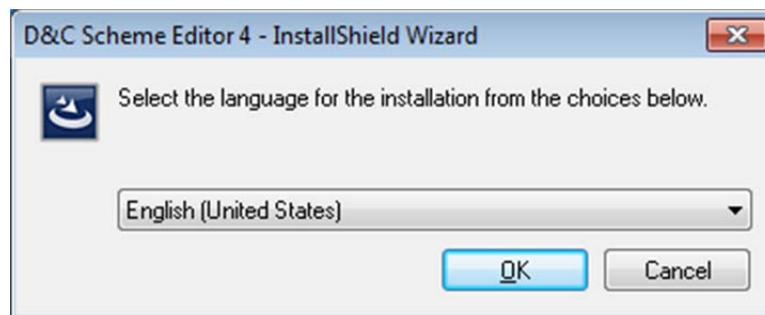


### Notice:

The layout of the file download dialog depends on your browser and your security settings.

## 3 Installation

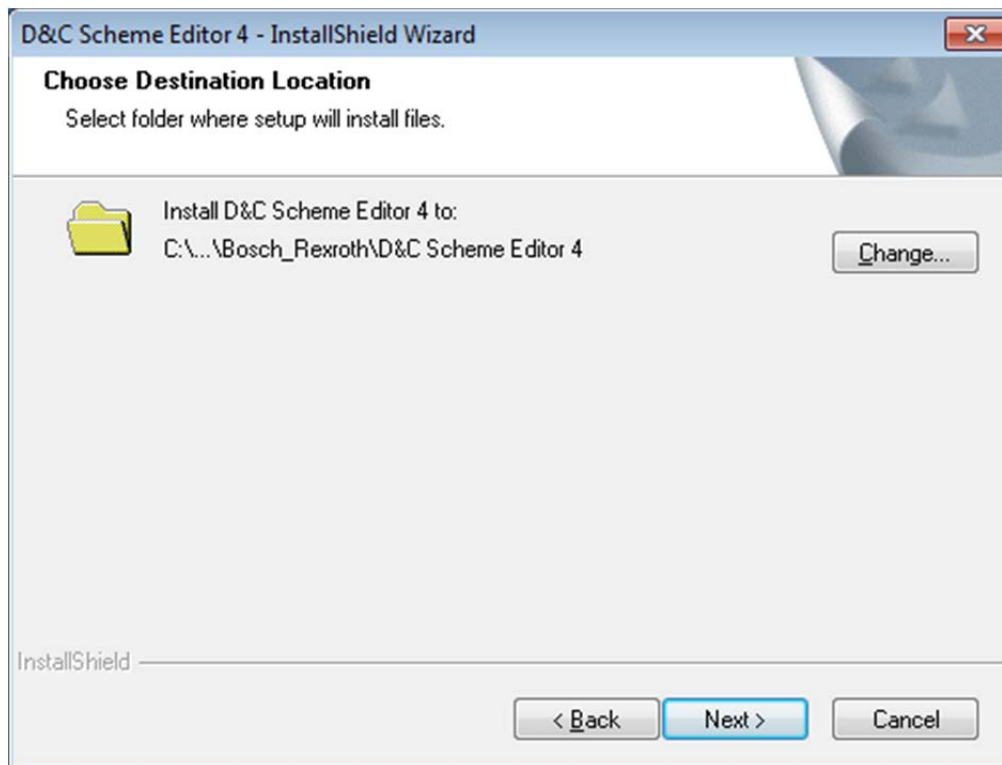
After downloading the setup please start the installation. You can choose the language used only for the installation process; this will not affect the application language.



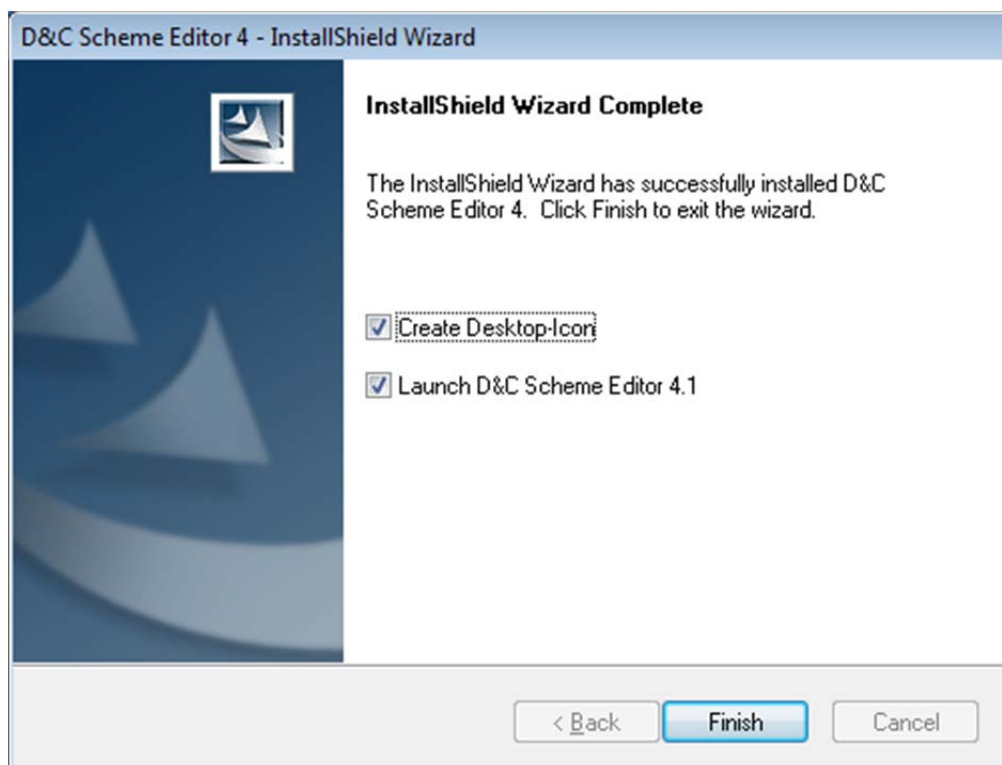
Click **OK** to jump to the Welcome page and jump to the Destination Location side using the **Next** button. Here you can change the default install location

**C:\Program Files\Bosch\_Rexroth\D&C Scheme Editor 4**

to whatever matches your requirements.



Click the button **Change...** to choose another installation folder. Use the button **Next** to jump to the next installation step, start the installation by clicking the **Install** button and start the application using the **Finish** button.



## 4 Application Start

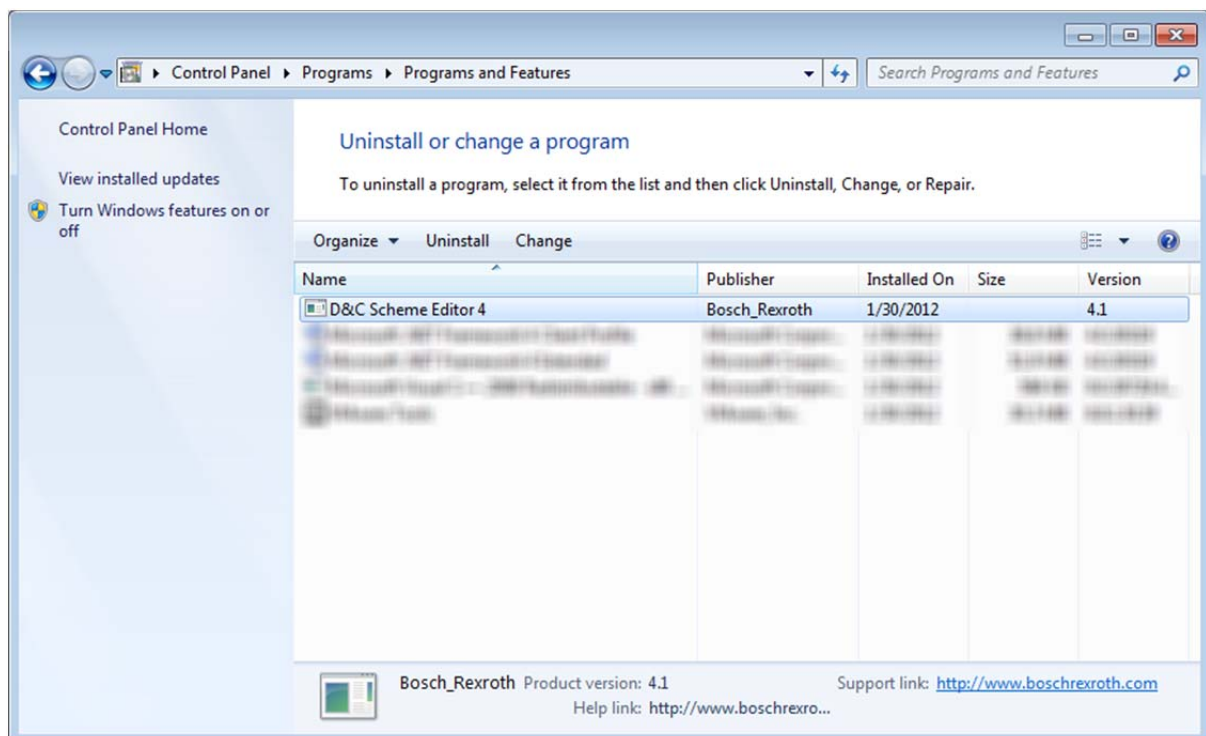
Just double-click the Application icon created on your desktop to start the D&C Scheme Editor:



Or – you can start the application by clicking the windows start menu entry **Start \ Bosch Rexroth \ D&C Scheme Editor 4.1**.

## 5 Remove the Application

To remove the application from your computer, use the windows system control panel and choose **Uninstall a program**. Select the D&C Scheme Editor Application and click the **Uninstall** button.



### Notice:

User defined settings will not be removed. You can find these settings in:

## Windows XP:

```
C:\Documents and Settings
  |- <username>
    |- Application Data
      |- Bosch Rexroth AG
        |- D&C Engine
          |- SEdit
            |- 04V01
```

## Windows 7

```
C:\Users
  |- <username>
    |- AppData
      |- Roaming
        |- Bosch Rexroth AG
          |- D&C Engine
            |- SEdit
              |- 04V01
```

A second way to remove the application from your computer is to start the setup program again and to choose the **Remove** option.

