



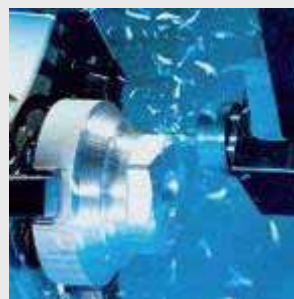
Apresentação Esquemas Hidráulicos Oil System



Adamo Santoro - BRBR/SLI

Tel: (11) 4414-5831

adamo.santoro@boschrexroth.com.br

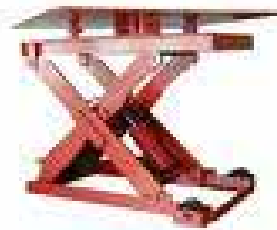


**Movimentar ?
Manter ?
Elevar ?
Versatilidade ?
Modularidade ?
Produto Único ?
Baixo Custo ?**



**Soluções
Bosch Rexroth !**

**Unidades
Compactas
Padronizadas
Modulares
Oil Sistem**

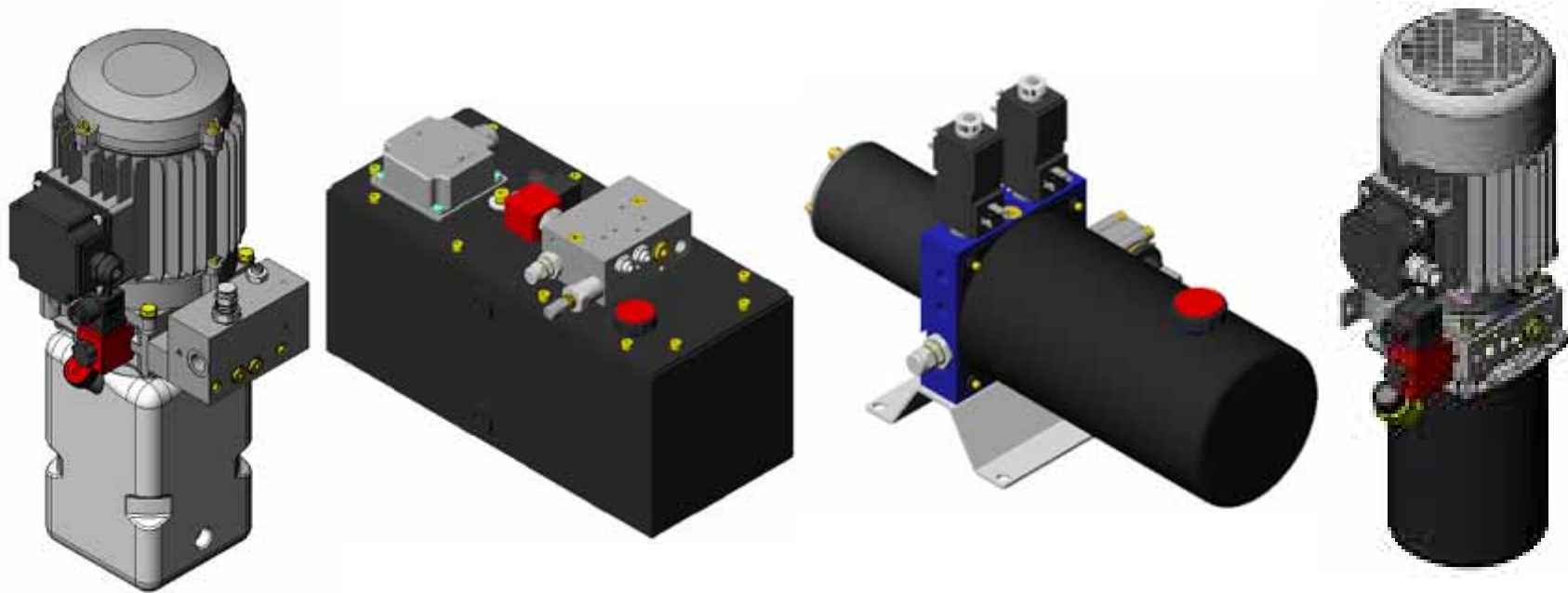


BRBR/SLI, A. Santoro

© All rights reserved by Bosch Rexroth AG, even and especially in cases of proprietary rights applications.
We also retain sole power of disposal, including all rights relating to copying, transmission and dissemination.




O que é o produto Oil Sistem ?

- **O Produto Oil Sistem é uma unidade compacta padronizada modular que através de um conjunto de componentes configuráveis consegue ter versatilidade com alto desempenho e qualidade.**
- **Os próximos slides mostraram diversos esquemas hidráulicos já desenvolvidos com a intenção de mostrar aos clientes a versatilidade do produto e diminuir o tempo de engenharia e desenvolvimento de produtos**



BRBR/SLI, A. Santoro

© All rights reserved by Bosch Rexroth AG, even and especially in cases of proprietary rights applications.
We also retain sole power of disposal, including all rights relating to copying, transmission and dissemination.

- Os códigos de estoque marcados com a sigla N.A (Não aplicável) são projetos já desenvolvidos pela engenharia e que ainda não possuem código de estoque
- Legenda
 -  ■ Produto Importado montado BR Itália
 -  ■ Produto Importado montado BR Brasil
 -  ■ Produto Importado montado BR Itália, mas iniciando estudos para montagem no Brasil
- Os departamentos de Aplicação (SLI e SLM) junto a Engenharia (Pop /Eng) Pomerode já estão analisando a possibilidade na nacionalização e montagem de todas as unidades hidráulicas

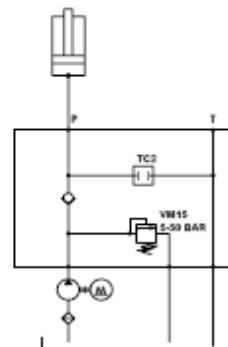
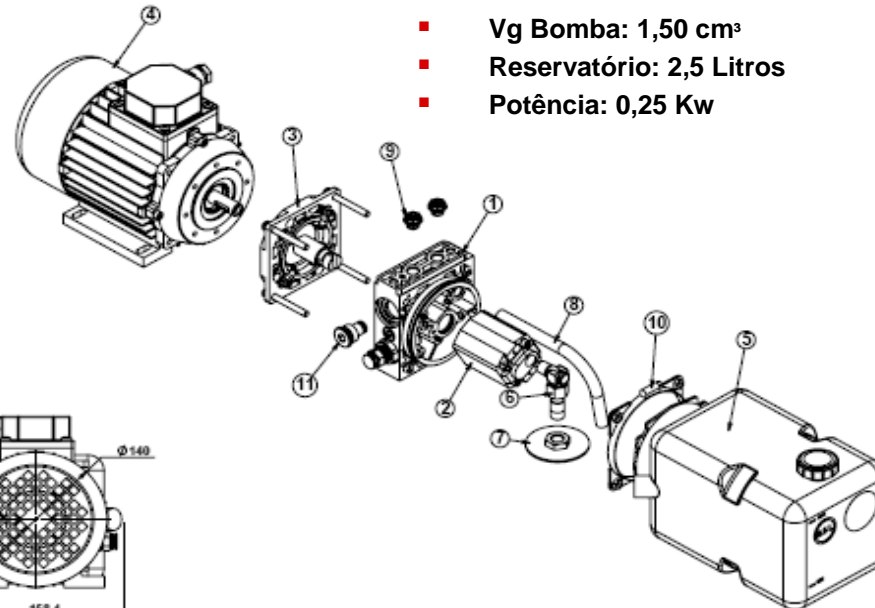
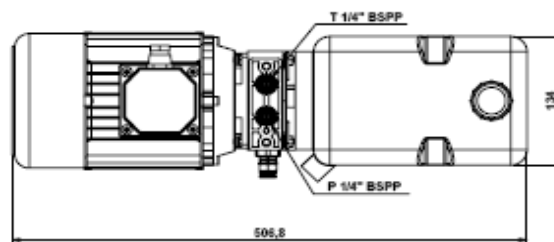
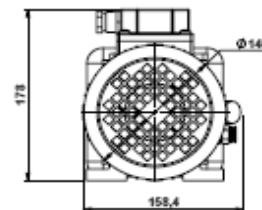
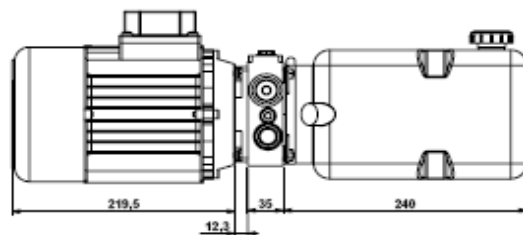
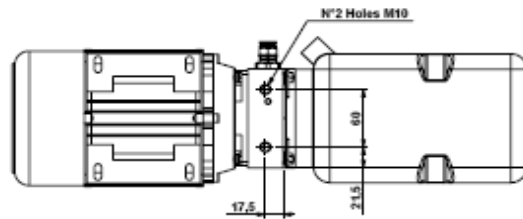
Esquema Hidráulico 01

Aplicações: Mesa Elevadoras e Máquina Serra Fita



Rexroth
Bosch Group

- Código Estoque: R979013850
- Pmax: 50 Bar
- Vg Bomba: 1,50 cm³
- Reservatório: 2,5 Litros
- Potência: 0,25 Kw



Pos.	Qty.	Code	Description
1	1	M001100000	M001100000
2	1	CP08063M	CP08063M
3	1	CP08063M	CP08063M
4	1	CP08063M	CP08063M
5	1	CP08063M	CP08063M
6	1	CP08063M	CP08063M
7	1	CP08063M	CP08063M
8	1	CP08063M	CP08063M
9	1	CP08063M	CP08063M
10	1	CP08063M	CP08063M
11	1	CP08063M	CP08063M

QUOTAZIONE / DESCRIPTION	ME2-CP08063M-F90-M53-W-TC2-L8-	CONDIZIONE / CONDITION	CP08.063
UNO DI RICAMBIO PER	S272-O1-G00	INDICE DI MODIFICA	
GRUPPO DI DISTRIBUZIONE	Dalchini D	DATA / DATE	26-05-2008
REVISIONE / REVISION	1	REVISIONE / REVISION	1.3
REVISIONE / REVISION	1	REVISIONE / REVISION	1

Esquema Hidráulico 03

Aplicações: Mesa Elevadoras e Máquina Serra Fita



Rexroth
Bosch Group

- Código Estoque: R979013852
- Pmax: 50 Bar
- Vg Bomba: 6,3 cm³
- Reservatório: 9 Litros
- Potência: 0,55 Kw

Pos.	Qty.	Code	Material Description	Description
1	1	0001 910100	AT (cylinder head) in type 01-50 bar	
2	1	01 91010100	2000-Plunger & Seal - cylinder 100mm	
3	1	0001 910102	Assembly element 01-50	
4	1	01 910103	01-50-01 Piston (plunger) 100mm x 55mm	
5	1	01 910104	01-50 Piston (plunger) 100mm x 55mm	
6	1	01 910105	01-50 Piston (plunger) 100mm x 55mm	
7	1	01 910106	01-50 Piston (plunger) 100mm x 55mm	
8	1	01 910107	01-50 Piston (plunger) 100mm x 55mm	
9	1	01 910108	01-50 Piston (plunger) 100mm x 55mm	
10	1	01 910109	01-50 Piston (plunger) 100mm x 55mm	

QUOTE AREA INDICAZIONE DI TOLLERANZE GEOMETRICHE UNI EN 20262/1		DESCRIZIONE / DESCRIPTION K2-CP08065M-F14-A1.W-19-S318- O1-G00		CODICE / CODE CP08.065	
GRADO DI PRECISIONE: FINE ALBERI TOLLERANZA: + FORI TOLLERANZA: +		DATA D'ATTUALITÀ 26-05-2008		INDICE DI MODIFICA 1.3	
GRUPPO DI DISTRIBUZIONE DISTRIBUZIONE: D GRUPPO DI DISTRIBUZIONE: D		DATA D'ATTUALITÀ 26-05-2008		INDICE DI MODIFICA 1.3	

A1.W
 P
 T
 50 bar

BRBR/SLI, A. Santoro

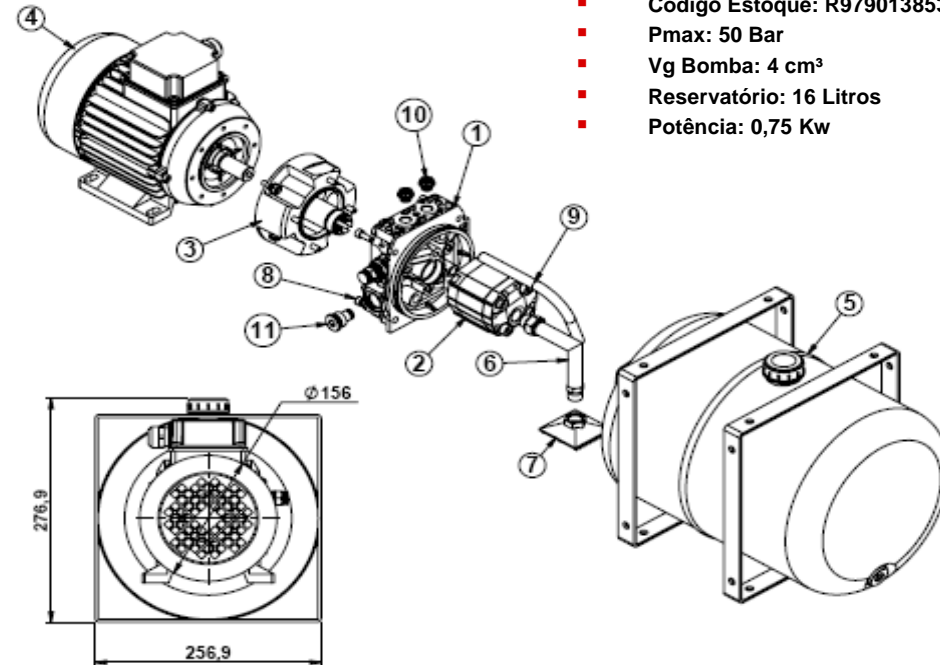
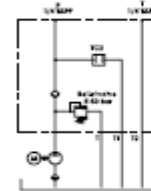
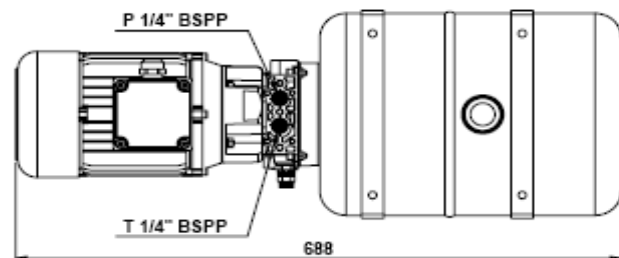
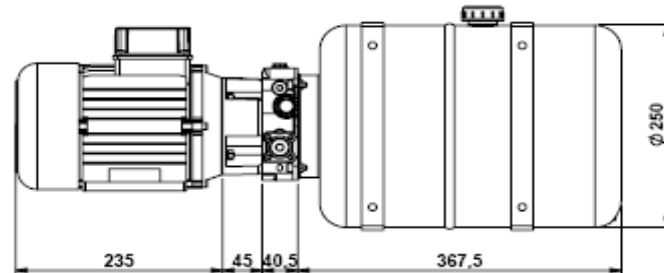
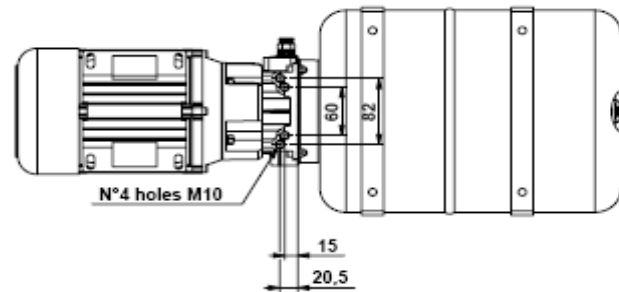
© All rights reserved by Bosch Rexroth AG, even and especially in cases of proprietary rights applications. We also retain sole power of disposal, including all rights relating to copying, transmission and dissemination.

Esquema Hidráulico 04

Aplicações: Mesa Elevadoras e Máquina Serra Fita



Rexroth
Bosch Group



- Código Estoque: R979013853
- Pmax: 50 Bar
- Vg Bomba: 4 cm³
- Reservatório: 16 Litros
- Potência: 0,75 Kw

Pos.	Qty	Code	Description
1	1	K29718115W	A12.W Central manifold with VM15 (5-50 bar)
2	1	CV10114321	16 pump 4.0cc Low Duty + vit M0805
3	1	K39707R522	Junction element F14
4	1	C182230300	4058BS Three phase motor 0.75kW
5	1	K39768E151	S128 Steel tank 16 litres
6	1	K250151051	Suction group
7	1	K225688000	Suction filter 3/8" female 152mm (50 micron)
8	4	CO10218200	Screw TC01 M5x16-5.5 UNI 5931
9	1	K234717000	Return pipe
10	2	CO11902000	Plastic protection plug 1/4"BSPP
11	1	R3597TA001	TC2 Plug for cavity V096204

MATERIALE / MATERIAL	TRATTAMENTO TERMICO / HEAT TREATMENT
STATO / STATE	TRATTAMENTO SUPERFICIALE / SURFACE TREATING

QUOTE SENZA INDICAZIONE DI TOLLERANZA SECONDO UNI EN 22768/1 GRADO DI PRECISIONE: FINE ALBERI: TOLLERANZA - FORI: TOLLERANZA +	DENOMINAZIONE / DESCRIPTION K2-405(B3/B14)-F14-A12.W-TC2-16-S128-O1-G00	CODICE / CODE CP08.066 INDICE DI MODIFICA
GRUPPO DI DIMENSIONI: 0-6 9-33 33-120 120-400	DESIGNATO / DESIGNER Dallari D.	DATA / DATE 28-08-2008
SCOSTI: ±0,05 ±0,1 ±0,15 ±0,2	VERIFICATO / VERIFIED Z'work/Campioni 2008	SCALA / SCALE 1:5
TOLL: 0,1 0,2 0,3 0,4	DIRETTORE / DIRECTOR Z'work/Campioni 2008	SOSTITUISCE IL SOSTITUITO DAL

BRBR/SLI, A. Santoro

© All rights reserved by Bosch Rexroth AG, even and especially in cases of proprietary rights applications. We also retain sole power of disposal, including all rights relating to copying, transmission and dissemination.

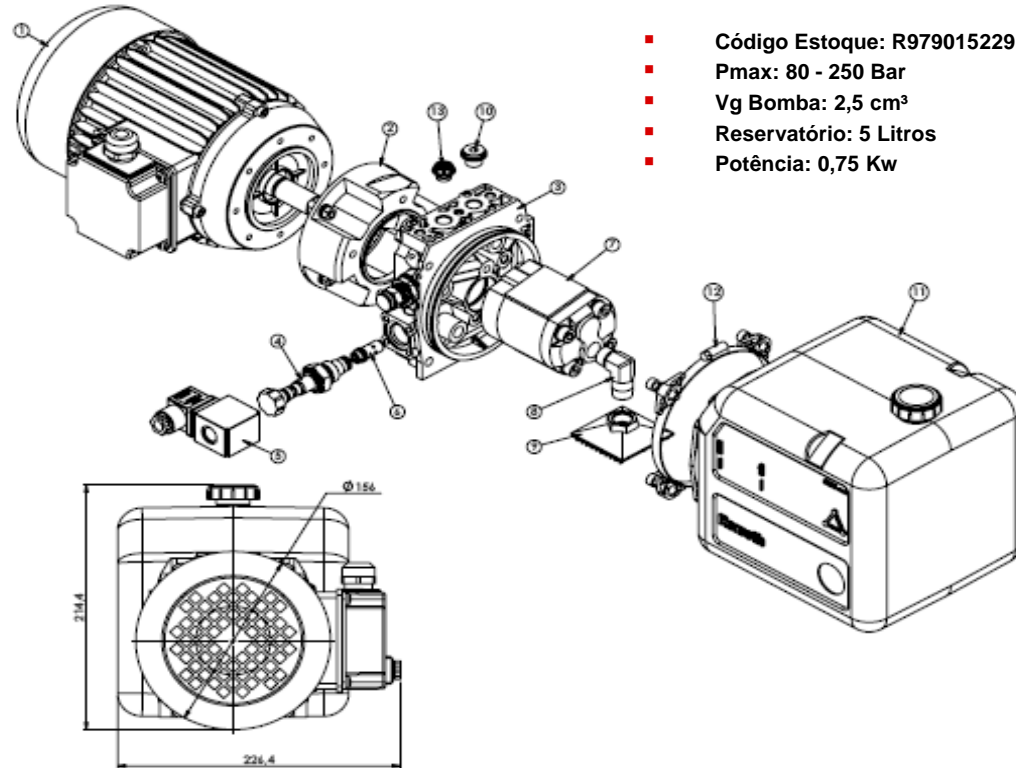
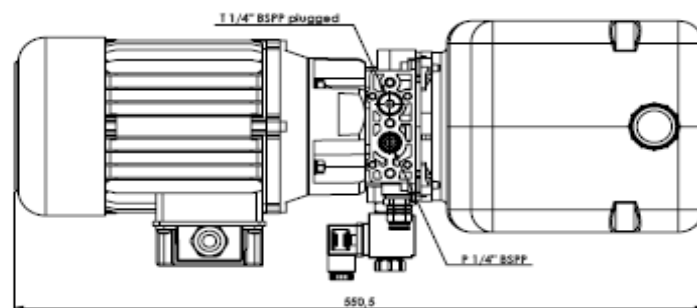
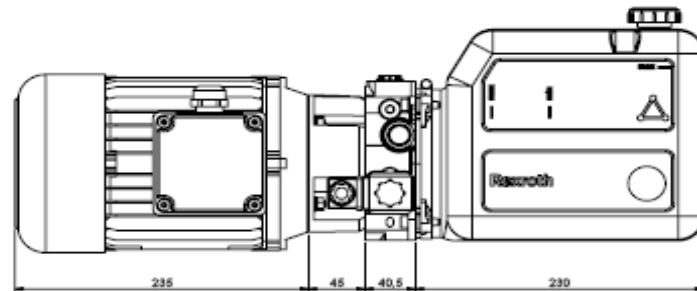
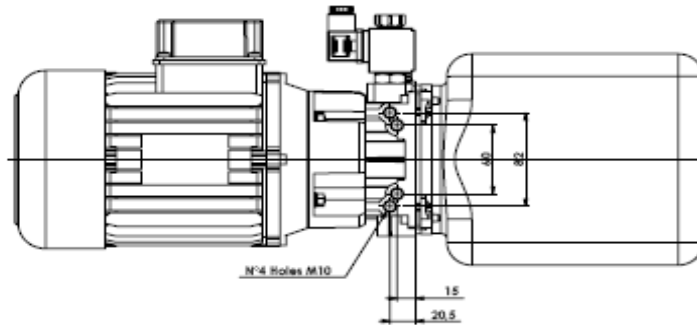
Disegno di proprietà Bosch Rexroth Oil Control S.p.A. tutelata a termini di legge. Sono vietate la riproduzione e la diffusione non autorizzate.

Esquema Hidráulico 05

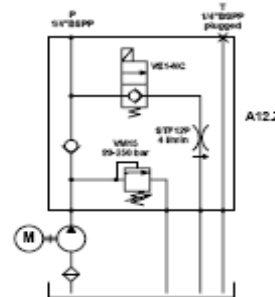
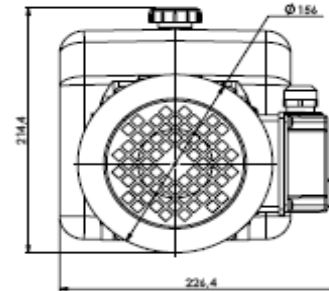
Aplicações: Mesa Elevadoras



Rexroth
Bosch Group



- Código Estoque: R979015229
- Pmax: 80 - 250 Bar
- Vg Bomba: 2,5 cm³
- Reservatório: 5 Litros
- Potência: 0,75 Kw



Pos.	Qty.	Code	Description
1	1	21021R030	Electric motor 3 phases 0.75kW sp. 230-400V 50-60Hz
2	1	20011R020	Assemble hydraulic P 16
3	1	20011R150	A12 Z Control valve 160-250 bar
4	1	20011R020	RT 1 MC Servo 2 way 2 position 100000
5	1	20011R020	RT 1 MC Servo 2 way 2 position 100000
6	1	20011R020	RT 1 MC Servo 2 way 2 position 100000
7	1	20011R020	RT 1 MC Servo 2 way 2 position 100000
8	1	20011R020	RT 1 MC Servo 2 way 2 position 100000
9	1	20011R020	RT 1 MC Servo 2 way 2 position 100000
10	1	20011R020	RT 1 MC Servo 2 way 2 position 100000
11	1	20011R020	RT 1 MC Servo 2 way 2 position 100000
12	1	20011R020	RT 1 MC Servo 2 way 2 position 100000
13	1	20011R020	RT 1 MC Servo 2 way 2 position 100000

QUOTAZIONE INDICAZIONE DI TOLLERANZA INCORRE	DISPONIBILITÀ	CODICE
UNI EN 22768-1	K2-405-F14-A12.Z-EC-OC-D-14-S343	DS08.087
GRUPPO DI DISTRIBUZIONE	DATA	INDICE DI MODIFICA
Dalchini D	23-09-2008	1.2.5
SCALE	SCALE	SCALE
1:1	1:1	1:1
1:2	1:2	1:2
1:5	1:5	1:5
1:10	1:10	1:10
1:20	1:20	1:20
1:50	1:50	1:50
1:100	1:100	1:100

Disegno di proprietà di OIL SYSTEM S.p.A. è tutelato a termini di legge. Sono vietate la riproduzione e la diffusione non autorizzate.

BRBR/SLI, A. Santoro

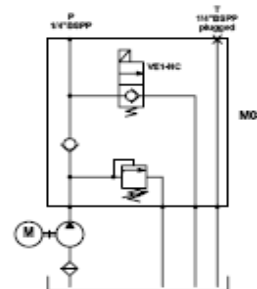
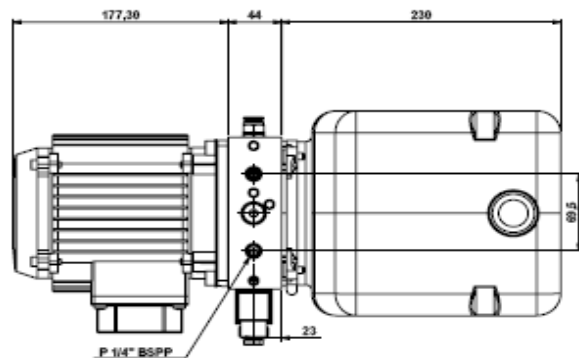
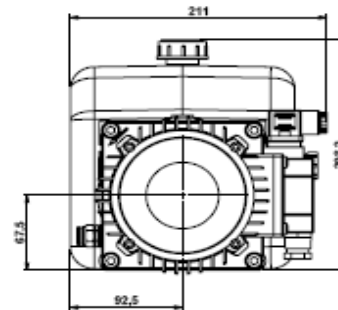
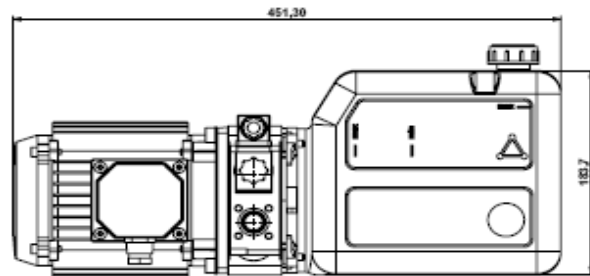
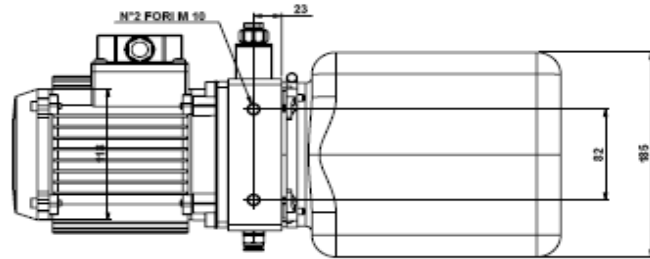
© All rights reserved by Bosch Rexroth AG, even and especially in cases of proprietary rights applications. We also retain sole power of disposal, including all rights relating to copying, transmission and dissemination.

Esquema Hidráulico 06

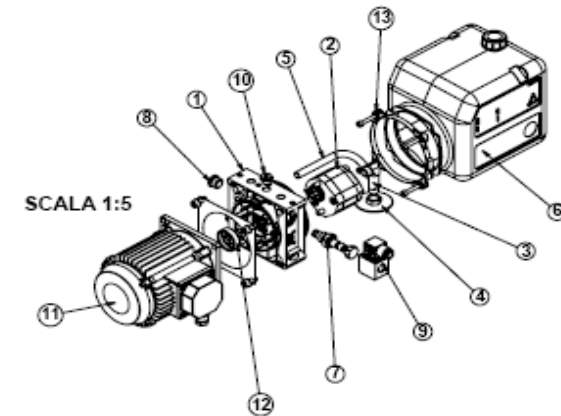
Aplicações: Mesa Elevadoras



Rexroth
Bosch Group



- Código Estoque: R979014223
- Pmax: 80 - 250 Bar
- Vg Bomba: 1,6 cm³
- Reservatório: 5 Litros
- Potência: 1,1 Kw



Pos.	Qtd.	Code	Descrizione
1	1	MS2719-042	MS2719-042 (MS2719-042)
2	1	200010000	200010000 (200010000)
3	1	200010000	200010000 (200010000)
4	1	200010000	200010000 (200010000)
5	1	200010000	200010000 (200010000)
6	1	200010000	200010000 (200010000)
7	1	200010000	200010000 (200010000)
8	1	200010000	200010000 (200010000)
9	1	200010000	200010000 (200010000)
10	1	200010000	200010000 (200010000)
11	1	200010000	200010000 (200010000)
12	1	200010000	200010000 (200010000)
13	1	200010000	200010000 (200010000)
14	1	200010000	200010000 (200010000)

QUOTE DIMENSIONALI DI TOLLERANZA INCIDIO UNI EN 22868 GRADO DI FINISSIMA PER SUPER TOLLERANZA FORI TOLLERANZA +	DESCRIZIONE / DESCRIPTION KE2-725-TR06-M03 Z-EC.OS-12GH- S343-O1-G00	CODICE / CODE DS07.020 INDICE DI MODIFICA
GRUPPO DI DIMENSIONI CL. 4.0 M. 1.1 M. 1.1 M. 1.1	DATA / DATE 20-05-2007	SCALA / SCALE 1:2,5
SOGGETTO / SUBJECT M. 1.1 M. 1.1 M. 1.1	AUTORE / AUTHOR Z. Iwori/Disegni Offerte 2007	VERIFICATO / CHECKED Z. Iwori/Disegni Offerte 2007

BRBR/SLI, A. Santoro

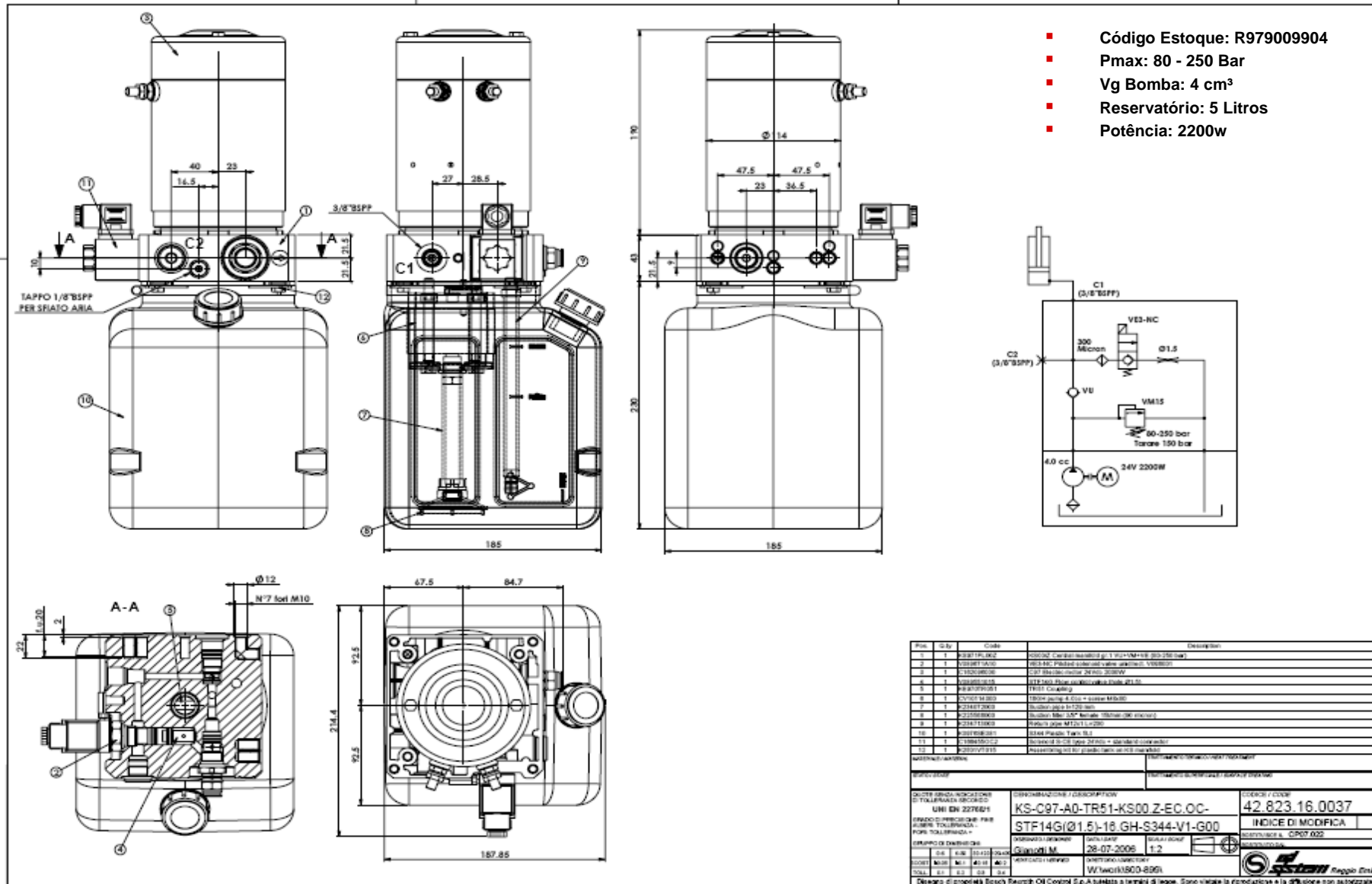
© All rights reserved by Bosch Rexroth AG, even and especially in cases of proprietary rights applications. We also retain sole power of disposal, including all rights relating to copying, transmission and dissemination.

Esquema Hidráulico 10

Aplicações: Empilhadeiras



Rexroth
Bosch Group



BRBR/SLI, A. Santoro

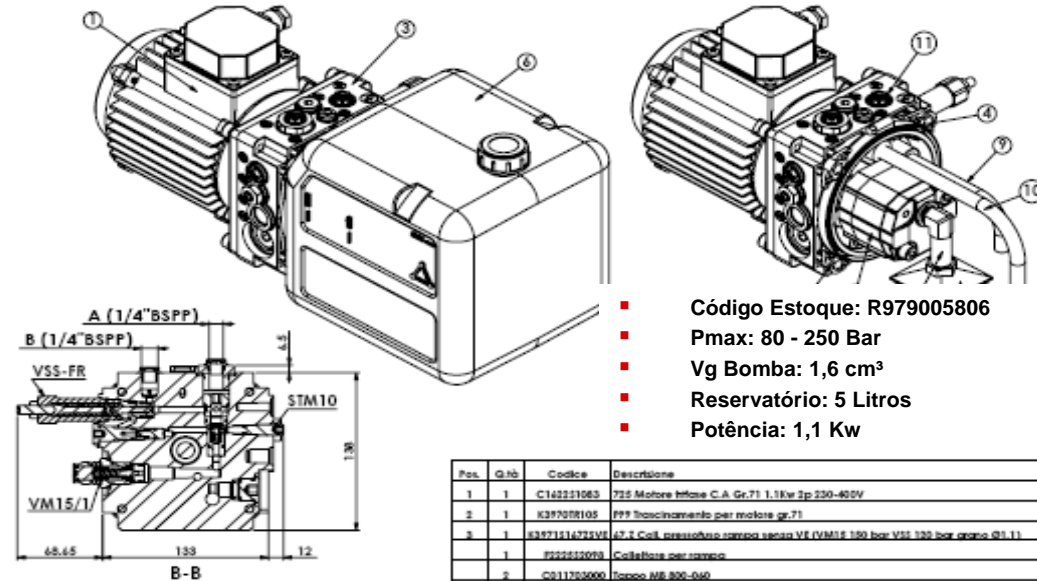
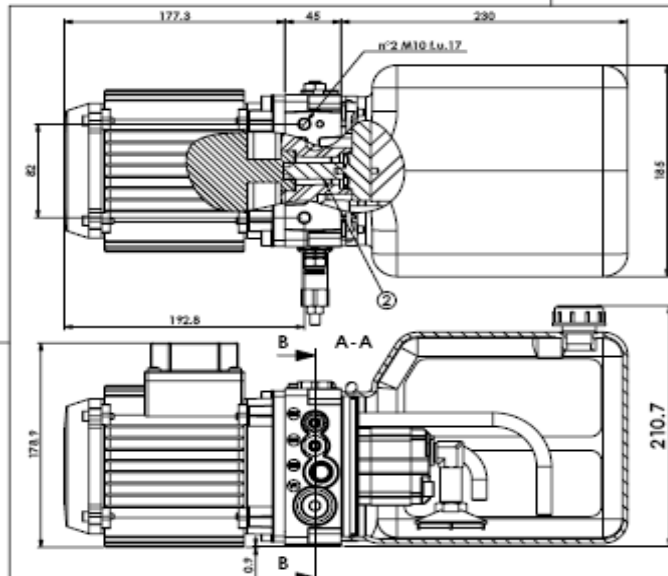
© All rights reserved by Bosch Rexroth AG, even and especially in cases of proprietary rights applications. We also retain sole power of disposal, including all rights relating to copying, transmission and dissemination.

Esquema Hidráulico 11

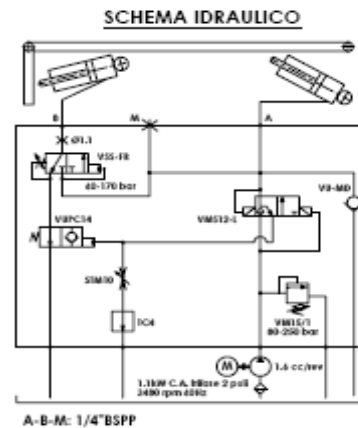
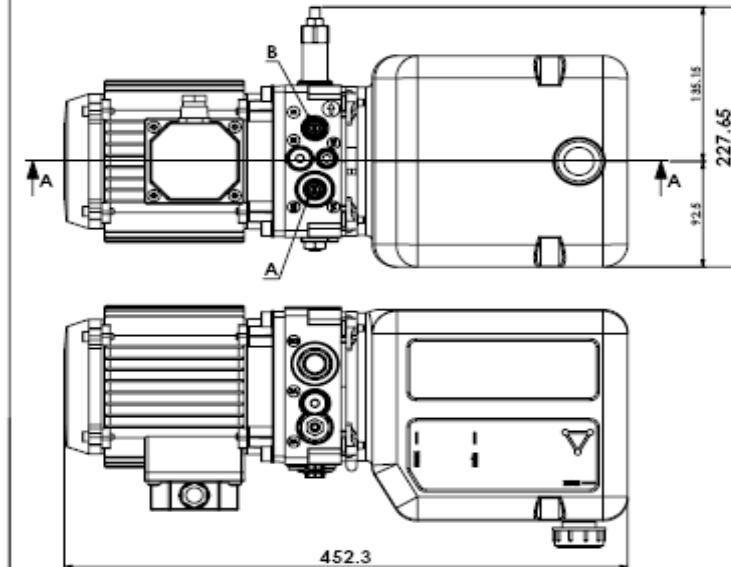
Aplicações: Niveladora de Doca



Rexroth
Bosch Group



- Código Estoque: R979005806
- Pmax: 80 - 250 Bar
- Vg Bomba: 1,6 cm³
- Reservatório: 5 Litros
- Potência: 1,1 Kw



Pos.	Q.tà	Codice	Descrizione
1	1	C14221063	725 Motore Idraulico C.A. Gr.71 1.1kw 2p 230-400V
2	1	K39708105	PPF frangimento per motore gr.71
3	1	8357131473131	A7.2 Coil, pressofuso stampo senza V6 (VM15) 180 bar VSS 120 bar grupo 01.11
4	1	F222512078	Collatore per campo
5	2	C011703000	Toppe MB 300-040
6	1	V360704433	VM15 Valvola di massima (molto 80-250 bar)
7	1	V38824000	VSS-FR Valvola separabile 40-170 bar
8	1	V38824000	VM15-L Valvola di massima a scarico con guarnizione in cava V094106
9	1	V38925000	V9PC14 Valvola pilotata a chiudere in cava V094106
10	1	V389557000	STM10 Valvola idrostatica
11	1	R06771A224	TC4 Tappo solo filetto 3/4" 1x UNF
12	1	C012404000	Bondello Bonded 1/2" GM923
13	1	C018257000	Riduzione base M1/2" - F1/4" speciale per montaggio G50 1/4"
14	1	V327128011	Diametro 1/4" con foro collorato Ø1.1 mm
15	1	C812009000	Tappo DIN 908 1/4" + rondella Bonded
16	1	V389228000	V93/8" -MD Valvola di ritegno Cav. V094008 molto debole
17	1	C000122115	Guarnizione CR 4437 (110.7x3.53)
18	1	C010110308	11GH pompa 1.6cc + viti M8x70
19	1	K397453300	3343 Serbatoio soffiato in plastica 5 litri orizzontale
20	1	V34492000	Tubo di aspirazione a sfera 3/4" BSPP (ø43) e pompe gr 1
21	1	K225540000	Tubo aspirazione 3/4" femmina 15' (largo 70 micron)
22	1	K234714000	Tubo di scarico
23	1	K234723000	Tubo di scarico M12x1
24	2	C011905000	Tappo di protezione 1/4" BSPP in plastica
25	1	K2501V0221	Kit viti per serbatoi soffiati

DISTRIBUZIONE UNI EN 22760/1 GRUPPO DI FABBRICAZIONE PER ACCIAIO, TOLLERANZA - FORI TOLLERANZA -		IDENTIFICAZIONE K2-725-F98-67 Z(1)-12.GH-S343- O1-G00		CODICE 52.833.12.0049 INDICE DI MODIFICA	
GRUPPO DI DISTRIBUZIONE 01-02-03-04-05-06-07-08-09-10-11-12-13-14-15-16-17-18-19-20-21-22-23-24-25-26-27-28-29-30-31-32-33-34-35-36-37-38-39-40-41-42-43-44-45-46-47-48-49-50-51-52-53-54-55-56-57-58-59-60-61-62-63-64-65-66-67-68-69-70-71-72-73-74-75-76-77-78-79-80-81-82-83-84-85-86-87-88-89-90-91-92-93-94-95-96-97-98-99-100-101-102-103-104-105-106-107-108-109-110-111-112-113-114-115-116-117-118-119-120-121-122-123-124-125-126-127-128-129-130-131-132-133-134-135-136-137-138-139-140-141-142-143-144-145-146-147-148-149-150-151-152-153-154-155-156-157-158-159-160-161-162-163-164-165-166-167-168-169-170-171-172-173-174-175-176-177-178-179-180-181-182-183-184-185-186-187-188-189-190-191-192-193-194-195-196-197-198-199-200-201-202-203-204-205-206-207-208-209-210-211-212-213-214-215-216-217-218-219-220-221-222-223-224-225-226-227-228-229-230-231-232-233-234-235-236-237-238-239-240-241-242-243-244-245-246-247-248-249-250-251-252-253-254-255-256-257-258-259-260-261-262-263-264-265-266-267-268-269-270-271-272-273-274-275-276-277-278-279-280-281-282-283-284-285-286-287-288-289-290-291-292-293-294-295-296-297-298-299-300-301-302-303-304-305-306-307-308-309-310-311-312-313-314-315-316-317-318-319-320-321-322-323-324-325-326-327-328-329-330-331-332-333-334-335-336-337-338-339-340-341-342-343-344-345-346-347-348-349-350-351-352-353-354-355-356-357-358-359-360-361-362-363-364-365-366-367-368-369-370-371-372-373-374-375-376-377-378-379-380-381-382-383-384-385-386-387-388-389-390-391-392-393-394-395-396-397-398-399-400-401-402-403-404-405-406-407-408-409-410-411-412-413-414-415-416-417-418-419-420-421-422-423-424-425-426-427-428-429-430-431-432-433-434-435-436-437-438-439-440-441-442-443-444-445-446-447-448-449-450-451-452-453-454-455-456-457-458-459-460-461-462-463-464-465-466-467-468-469-470-471-472-473-474-475-476-477-478-479-480-481-482-483-484-485-486-487-488-489-490-491-492-493-494-495-496-497-498-499-500-501-502-503-504-505-506-507-508-509-510-511-512-513-514-515-516-517-518-519-520-521-522-523-524-525-526-527-528-529-530-531-532-533-534-535-536-537-538-539-540-541-542-543-544-545-546-547-548-549-550-551-552-553-554-555-556-557-558-559-560-561-562-563-564-565-566-567-568-569-570-571-572-573-574-575-576-577-578-579-580-581-582-583-584-585-586-587-588-589-590-591-592-593-594-595-596-597-598-599-600-601-602-603-604-605-606-607-608-609-610-611-612-613-614-615-616-617-618-619-620-621-622-623-624-625-626-627-628-629-630-631-632-633-634-635-636-637-638-639-640-641-642-643-644-645-646-647-648-649-650-651-652-653-654-655-656-657-658-659-660-661-662-663-664-665-666-667-668-669-670-671-672-673-674-675-676-677-678-679-680-681-682-683-684-685-686-687-688-689-690-691-692-693-694-695-696-697-698-699-700-701-702-703-704-705-706-707-708-709-710-711-712-713-714-715-716-717-718-719-720-721-722-723-724-725-726-727-728-729-730-731-732-733-734-735-736-737-738-739-740-741-742-743-744-745-746-747-748-749-750-751-752-753-754-755-756-757-758-759-760-761-762-763-764-765-766-767-768-769-770-771-772-773-774-775-776-777-778-779-780-781-782-783-784-785-786-787-788-789-790-791-792-793-794-795-796-797-798-799-800-801-802-803-804-805-806-807-808-809-810-811-812-813-814-815-816-817-818-819-820-821-822-823-824-825-826-827-828-829-830-831-832-833-834-835-836-837-838-839-840-841-842-843-844-845-846-847-848-849-850-851-852-853-854-855-856-857-858-859-860-861-862-863-864-865-866-867-868-869-870-871-872-873-874-875-876-877-878-879-880-881-882-883-884-885-886-887-888-889-890-891-892-893-894-895-896-897-898-899-900-901-902-903-904-905-906-907-908-909-910-911-912-913-914-915-916-917-918-919-920-921-922-923-924-925-926-927-928-929-930-931-932-933-934-935-936-937-938-939-940-941-942-943-944-945-946-947-948-949-950-951-952-953-954-955-956-957-958-959-960-961-962-963-964-965-966-967-968-969-970-971-972-973-974-975-976-977-978-979-980-981-982-983-984-985-986-987-988-989-990-991-992-993-994-995-996-997-998-999-1000-1001-1002-1003-1004-1005-1006-1007-1008-1009-1010-1011-1012-1013-1014-1015-1016-1017-1018-1019-1020-1021-1022-1023-1024-1025-1026-1027-1028-1029-1030-1031-1032-1033-1034-1035-1036-1037-1038-1039-1040-1041-1042-1043-1044-1045-1046-1047-1048-1049-1050-1051-1052-1053-1054-1055-1056-1057-1058-1059-1060-1061-1062-1063-1064-1065-1066-1067-1068-1069-1070-1071-1072-1073-1074-1075-1076-1077-1078-1079-1080-1081-1082-1083-1084-1085-1086-1087-1088-1089-1090-1091-1092-1093-1094-1095-1096-1097-1098-1099-1100-1101-1102-1103-1104-1105-1106-1107-1108-1109-1110-1111-1112-1113-1114-1115-1116-1117-1118-1119-1120-1121-1122-1123-1124-1125-1126-1127-1128-1129-1130-1131-1132-1133-1134-1135-1136-1137-1138-1139-1140-1141-1142-1143-1144-1145-1146-1147-1148-1149-1150-1151-1152-1153-1154-1155-1156-1157-1158-1159-1160-1161-1162-1163-1164-1165-1166-1167-1168-1169-1170-1171-1172-1173-1174-1175-1176-1177-1178-1179-1180-1181-1182-1183-1184-1185-1186-1187-1188-1189-1190-1191-1192-1193-1194-1195-1196-1197-1198-1199-1200-1201-1202-1203-1204-1205-1206-1207-1208-1209-1210-1211-1212-1213-1214-1215-1216-1217-1218-1219-1220-1221-1222-1223-1224-1225-1226-1227-1228-1229-1230-1231-1232-1233-1234-1235-1236-1237-1238-1239-1240-1241-1242-1243-1244-1245-1246-1247-1248-1249-1250-1251-1252-1253-1254-1255-1256-1257-1258-1259-1260-1261-1262-1263-1264-1265-1266-1267-1268-1269-1270-1271-1272-1273-1274-1275-1276-1277-1278-1279-1280-1281-1282-1283-1284-1285-1286-1287-1288-1289-1290-1291-1292-1293-1294-1295-1296-1297-1298-1299-1300-1301-1302-1303-1304-1305-1306-1307-1308-1309-1310-1311-1312-1313-1314-1315-1316-1317-1318-1319-1320-1321-1322-1323-1324-1325-1326-1327-1328-1329-1330-1331-1332-1333-1334-1335-1336-1337-1338-1339-1340-1341-1342-1343-1344-1345-1346-1347-1348-1349-1350-1351-1352-1353-1354-1355-1356-1357-1358-1359-1360-1361-1362-1363-1364-1365-1366-1367-1368-1369-1370-1371-1372-1373-1374-1375-1376-1377-1378-1379-1380-1381-1382-1383-1384-1385-1386-1387-1388-1389-1390-1391-1392-1393-1394-1395-1396-1397-1398-1399-1400-1401-1402-1403-1404-1405-1406-1407-1408-1409-1410-1411-1412-1413-1414-1415-1416-1417-1418-1419-1420-1421-1422-1423-1424-1425-1426-1427-1428-1429-1430-1431-1432-1433-1434-1435-1436-1437-1438-1439-1440-1441-1442-1443-1444-1445-1446-1447-1448-1449-1450-1451-1452-1453-1454-1455-1456-1457-1458-1459-1460-1461-1462-1463-1464-1465-1466-1467-1468-1469-1470-1471-1472-1473-1474-1475-1476-1477-1478-1479-1480-1481-1482-1483-1484-1485-1486-1487-1488-1489-1490-1491-1492-1493-1494-1495-1496-1497-1498-1499-1500-1501-1502-1503-1504-1505-1506-1507-1508-1509-1510-1511-1512-1513-1514-1515-1516-1517-1518-1519-1520-1521-1522-1523-1524-1525-1526-1527-1528-1529-1530-1531-1532-1533-1534-1535-1536-1537-1538-1539-1540-1541-1542-1543-1544-1545-1546-1547-1548-1549-1550-1551-1552-1553-1554-1555-1556-1557-1558-1559-1560-1561-1562-1563-1564-1565-1566-1567-1568-1569-1570-1571-1572-1573-1574-1575-1576-1577-1578-1579-1580-1581-1582-1583-1584-1585-1586-1587-1588-1589-1590-1591-1592-1593-1594-1595-1596-1597-1598-1599-1600-1601-1602-1603-1604-1605-1606-1607-1608-1609-1610-1611-1612-1613-1614-1615-1616-1617-1618-1619-1620-1621-1622-1623-1624-1625-1626-1627-1628-1629-1630-1631-1632-1633-1634-1635-1636-1637-1638-1639-1640-1641-1642-1643-1644-1645-1646-1647-1648-1649-1650-1651-1652-1653-1654-1655-1656-1657-1658-1659-1660-1661-1662-1663-1664-1665-1666-1667-1668-1669-1670-1671-1672-1673-1674-1675-1676-1677-1678-1679-1680-1681-1682-1683-1684-1685-1686-1687-1688-1689-1690-1691-1692-1693-1694-1695-1696-1697-1698-1699-1700-1701-1702-1703-1704-1705-1706-1707-1708-1709-1710-1711-1712-1713-1714-1715-1716-1717-1718-1719-1720-1721-1722-1723-1724-1725-1726-1727-1728-1729-1730-1731-1732-1733-1734-1735-1736-1737-1738-1739-1740-1741-1742-1743-1744-1745-1746-1747-1748-1749-1750-1751-1752-1753-1754-1755-1756-1757-1758-1759-1760-1761-1762-1763-1764-1765-1766-1767-1768-1769-1770-1771-1772-1773-1774-1775-1776-1777-1778-1779-1780-1781-1782-1783-1784-1785-1786-1787-1788-1789-1790-1791-1792-1793-1794-1795-1796-1797-1798-1799-1800-1801-1802-1803-1804-1805-1806-1807-1808-1809-1810-1811-1812-1813-1814-1815-1816-1817-1818-1819-1820-1821-1822-1823-1824-1825-1826-1827-1828-1829-1830-1831-1832-1833-1834-1835-1836-1837-1838-1839-1840-1841-1842-1843-1844-1845-1846-1847-1848-1849-1850-1851-1852-1853-1854-1855-1856-1857-1858-1859-1860-1861-1862-1863-1864-1865-1866-1867-1868-1869-1870-1871-1872-1873-1874-1875-1876-1877-1878-1879-1880-1881-1882-1883-1884-1885-1886-1887-1888-1889-1890-1891-1892-1893-1894-1895-1896-1897-1898-1899-1900-1901-1902-1903-1904-1905-1906-1907-1908-1909-1910-1911-1912-1913-1914-1915-1916-1917-1918-1919-1920-1921-1922-1923-1924-1925-1926-1927-1928-1929-1930-1931-1932-1933-1934-1935-1936-1937-1938-1939-1940-1941-1942-1943-1944-1945-1946-1947-1948-1949-1950-1951-1952-1953-1954-1955-1956-1957-1958-1959-1960-1961-1962-1963-1964-1965-1966-1967-1968-1969-1970-1971-1972-1973-1974-1975-1976-1977-1978-1979-1980-1981-1982-1983-1984-1985-1986-1987-1988-1989-1990-1991-1992-1993-1994-1995-1996-1997-1998-1999-2000-2001-2002-2003-2004-2005-2006-2007-2008-2009-2010-2011-2012-2013-2014-2015-2016-2017-2018-2019-2020-2021-2022-2023-2024-2025-2026-2027-2028-2029-2030-2031-2032-2033-2034-2035-2036-2037-2038-2039-2040-2041-2042-2043-2044-2045-2046-2047-2048-2049-2050-2051-2052-2053-2054-2055-2056-2057-2058-2059-2060-2061-2062-2063-2064-2065-2066-2067-2068-2069-2070-2071-2072-2073-2074-2075-2076-2077-2078-2079-2080-2081-2082-2083-2084-2085-2086-2087-2088-2089-2090-2091-2092-2093-2094-2095-2096-2097-2098-2099-2100-2101-2102-2103-2104-2105-2106-2107-2108-2109-2110-2111-2112-2113-2114-2115-2116-2117-2118-2119-2120-2121-2122-2123-2124-2125-2126-2127-2128-2129-2130-2131-2132-2133-2134-2135-2136-2137-2138-2139-2140-2141-2142-2143-2144-2145-2146-2147-2148-2149-2150-2151-2152-2153-2154-2155-2156-2157-2158-2159-2160-2161-2162-2163-2164-2165-2166-2167-2168-2169-2170-2171-2172-2173-2174-2175-2176-2177-2178-2179-2180-2181-2182-2183-2184-2185-2186-2187-2188-2189-2190-2191-2192-2193-2194-2195-2					

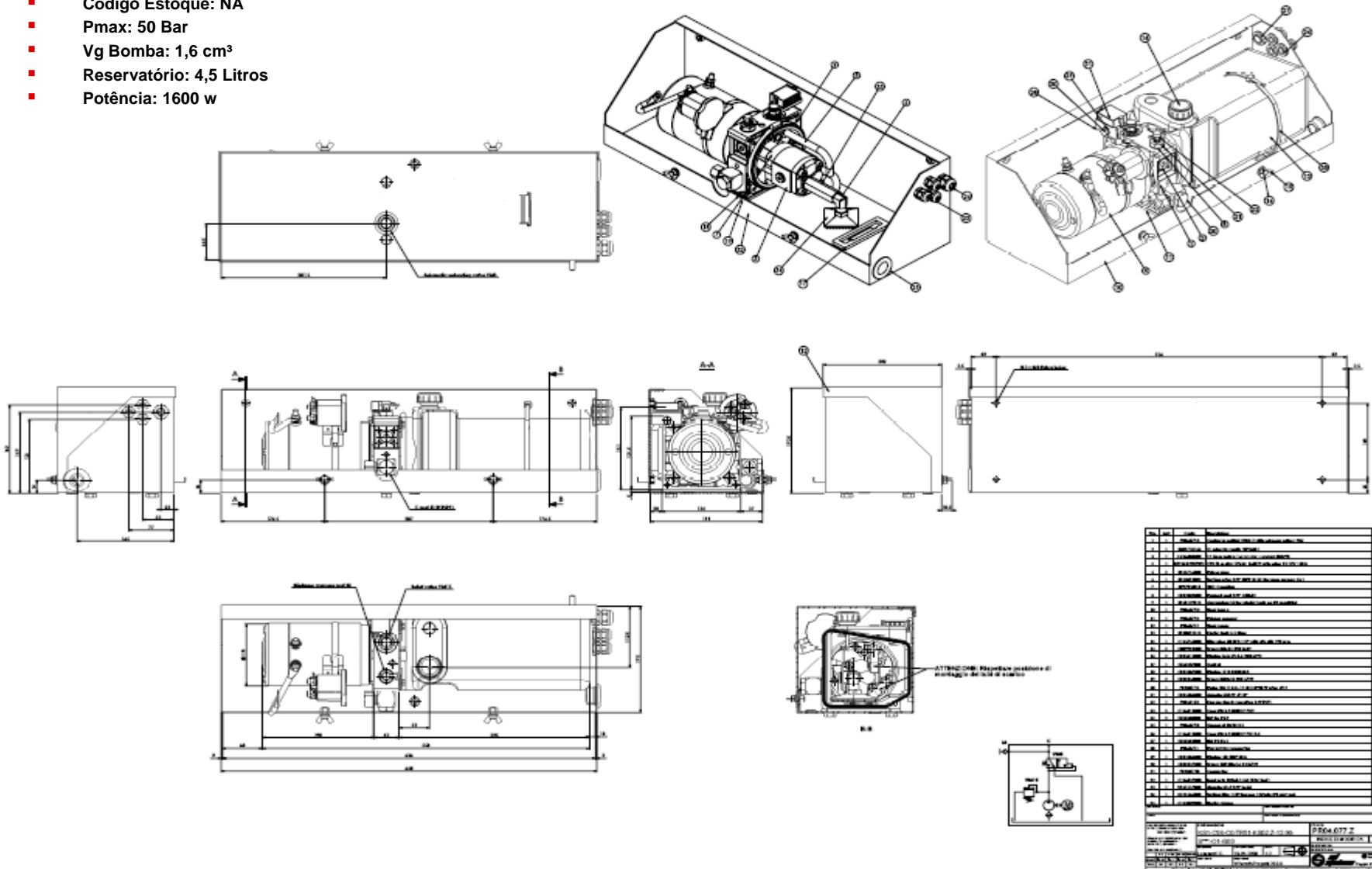
Esquema Hidráulico 12

Aplicações: Plataforma Veicular



Rexroth
Bosch Group

- Código Estoque: NA
- Pmax: 50 Bar
- Vg Bomba: 1,6 cm³
- Reservatório: 4,5 Litros
- Potência: 1600 w



BRBR/SLI, A. Santoro

© All rights reserved by Bosch Rexroth AG, even and especially in cases of proprietary rights applications. We also retain sole power of disposal, including all rights relating to copying, transmission and dissemination.

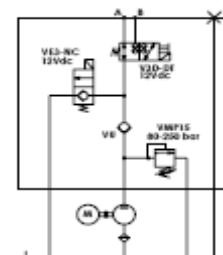
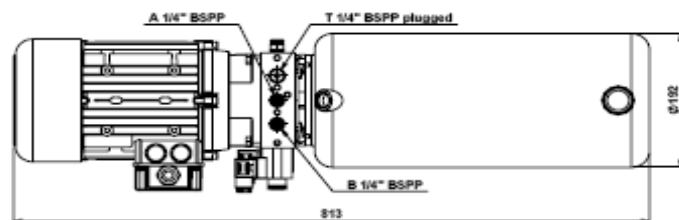
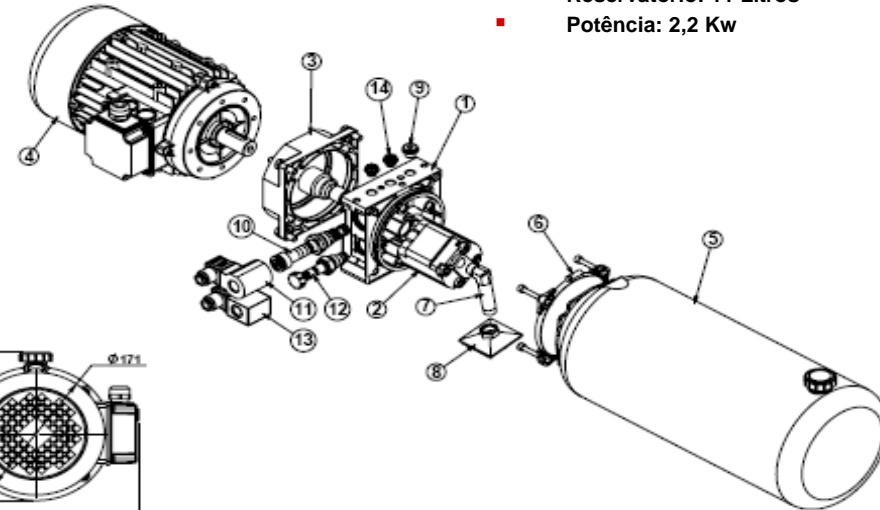
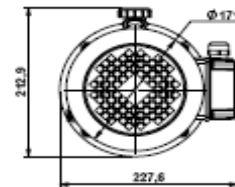
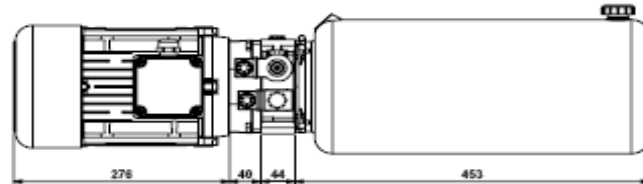
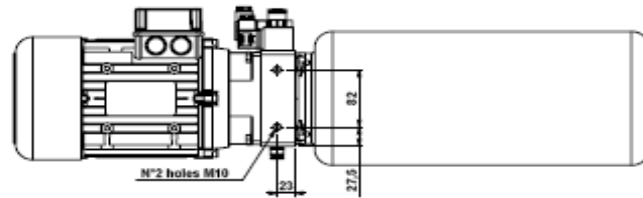
Esquema Hidráulico 13

Aplicações: Plataforma Elevadoras



Rexroth
Bosch Group

- Código Estoque: R979014103
- Pmax: 80 - 250 Bar
- Vg Bomba: 3,2 cm³
- Reservatório: 11 Litros
- Potência: 2,2 Kw



Pos.	Qty.	Code	Description
1	1	082101184	VE3-Z Control valve for 3-position 12Vdc/24Vdc
2	1	08211180	15 Pump 3.2 cubic cm - 12Vdc/24Vdc
3	1	082179004	TR15 Hydraulic relief
4	1	08211184	VE3-Z Valve for 3-position 12Vdc/24Vdc
5	1	08211181	11L Reservoir 11L
6	1	082179014	Assembly kit for pump kit
7	1	08211180	15 Pump 3.2 cubic cm - 12Vdc/24Vdc
8	1	08211180	15 Pump 3.2 cubic cm - 12Vdc/24Vdc
9	1	08211180	15 Pump 3.2 cubic cm - 12Vdc/24Vdc
10	1	08211180	15 Pump 3.2 cubic cm - 12Vdc/24Vdc
11	1	08211180	15 Pump 3.2 cubic cm - 12Vdc/24Vdc
12	1	08211180	15 Pump 3.2 cubic cm - 12Vdc/24Vdc
13	1	08211180	15 Pump 3.2 cubic cm - 12Vdc/24Vdc
14	1	08211180	15 Pump 3.2 cubic cm - 12Vdc/24Vdc

QUOTE SENZA INDICAZIONE DI TOLLERANZA SONO DA INTENDERSI CON TOLLERANZA ISO 2768/1 UNIFORMITÀ DI TOLLERANZA PER TOLLENCIA +		DESCRIZIONE / DESCRIPTION K2-408-TR04-M15-Z-15-S380-01- V3DT.OB-EC.OB		CODICE / CODE DS08_046
GRUPPO DI DISTRIBUZIONE 0-5 0-6 0-7 0-8 0-9 1-0 1-1 1-2 1-3 1-4 1-5 1-6 1-7 1-8 1-9 2-0 2-1 2-2 2-3 2-4 2-5 2-6 2-7 2-8 2-9 3-0 3-1 3-2 3-3 3-4 3-5 3-6 3-7 3-8 3-9 4-0 4-1 4-2 4-3 4-4 4-5 4-6 4-7 4-8 4-9 5-0 5-1 5-2 5-3 5-4 5-5 5-6 5-7 5-8 5-9 6-0 6-1 6-2 6-3 6-4 6-5 6-6 6-7 6-8 6-9 7-0 7-1 7-2 7-3 7-4 7-5 7-6 7-7 7-8 7-9 8-0 8-1 8-2 8-3 8-4 8-5 8-6 8-7 8-8 8-9 9-0 9-1 9-2 9-3 9-4 9-5 9-6 9-7 9-8 9-9		DATA / DATE 30-05-2008		INDICE DI MODIFICA 1.4
AUTORE / AUTHOR BRBR/SLI		DATA / DATE 30-05-2008		AUTORE / AUTHOR BRBR/SLI
GRUPPO DI DISTRIBUZIONE 0-5 0-6 0-7 0-8 0-9 1-0 1-1 1-2 1-3 1-4 1-5 1-6 1-7 1-8 1-9 2-0 2-1 2-2 2-3 2-4 2-5 2-6 2-7 2-8 2-9 3-0 3-1 3-2 3-3 3-4 3-5 3-6 3-7 3-8 3-9 4-0 4-1 4-2 4-3 4-4 4-5 4-6 4-7 4-8 4-9 5-0 5-1 5-2 5-3 5-4 5-5 5-6 5-7 5-8 5-9 6-0 6-1 6-2 6-3 6-4 6-5 6-6 6-7 6-8 6-9 7-0 7-1 7-2 7-3 7-4 7-5 7-6 7-7 7-8 7-9 8-0 8-1 8-2 8-3 8-4 8-5 8-6 8-7 8-8 8-9 9-0 9-1 9-2 9-3 9-4 9-5 9-6 9-7 9-8 9-9		DATA / DATE 30-05-2008		AUTORE / AUTHOR BRBR/SLI

BRBR/SLI, A. Santoro

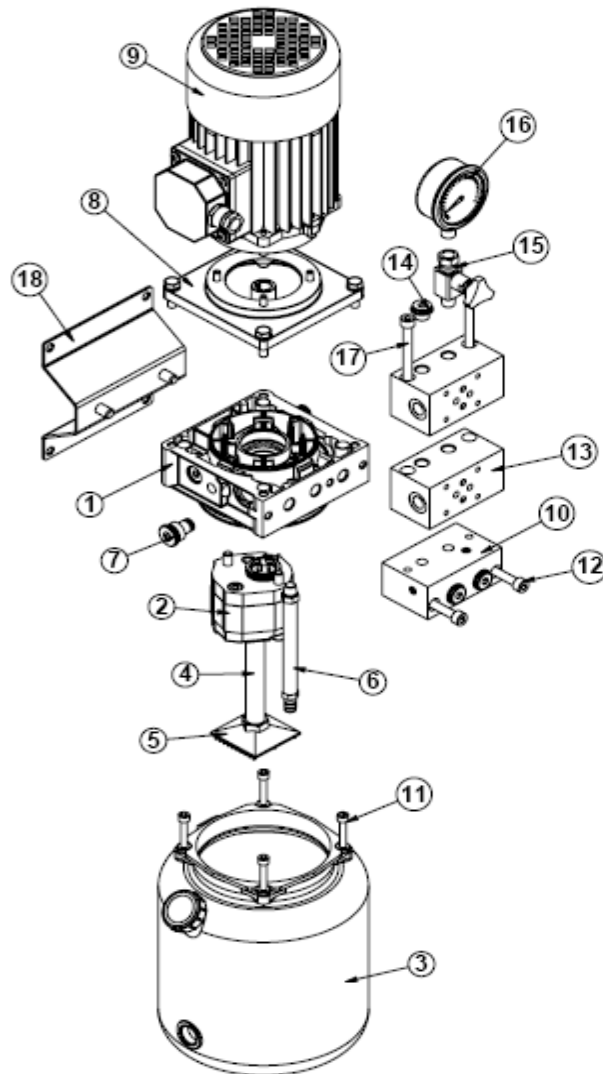
© All rights reserved by Bosch Rexroth AG, even and especially in cases of proprietary rights applications. We also retain sole power of disposal, including all rights relating to copying, transmission and dissemination.

Esquema Hidráulico 15

Aplicações: Máquina Ferramenta



Rexroth
Bosch Group



- Código Estoque: R979015980
- Pmax: 5 - 50 Bar
- Vg Bomba: 1,6 cm³
- Reservatório: 5 Litros
- Potência: 0,25 Kw

Pos.	Qty	Code	Description
1	1	R9710103W	M02.W Manifold (5-50 bar)
2	1	CV10110355	120H pump 1.6cc + screws M5x70
3	1	R39765E415	5575 Round plastic tank 5 litres
4	1	R234052010	Suction pipe L=124 (inlet)
5	1	R235588000	Suction filter 3/8" female 150mm (90 micron)
6	1	R234714000	Return pipe M12x1 L=150
7	1	R38971A001	TC2 Plug for cavity V096004
8	1	R970170002	TR02 junction element for AC motor size 71
9	1	C182287000	4025TD electric motor three phase 0.25kW 4p
10	1	G389050000	N51 Modular element
11	1	K2501V7014	Assembly kit for plastic tank
12	2	CD100560000	Screw TC61 M5x5.5 UNI 5931
13	2	G389002010	N03 Modular element with ports 1/4"
14	1	CB120090000	Plug DIN 908 1/4"BSPP + Bonded seal
15	1	C180503000	Manometer isolator
16	1	C183016000	Manometer 253 (0-50 bar)
17	2	CD100910000	Screw TC61 M5x105 UNI5931
18	1	FS31514000	G80 mounting bracket

MATERIALE / MATERIAL TRATTAMENTO TERMICO / HEAT TREATMENT

STATO / STATE TRATTAMENTO SUPERFICIALE / SURFACE TREATING

QUOTE SENZA INDICAZIONE DI TOLLERANZA SECONDO UNI EN 22768/1 GRADO DI PRECISIONE FINE ALBERI: TOLLERANZA - FORI: TOLLERANZA + GRUPPO DI DIMENSIONI:	DENOMINAZIONE / DESCRIPTION KE2-402-TR02-M02.W-TC2-12.GH- S375-V1-G80-N51-N03.01x2-E+M	CODICE / CODE CP09.041 INDICE DI MODIFICA
DESIGNATO / DESIGNER Gianotti M. DATA / DATE 02-04-2009 VERIFICATO / VERIFIED Z'work/Campioni 2009	SCALA / SCALE 1:4 DIRETTORE / DIRECTORY	SOSTITUISCE IL SOSTITUITO DAL

Disegno di proprietà Bosch Rexroth Oil Control S.p.A. tutelata a termini di legge. Sono vietate la riproduzione e la diffusione non autorizzate.

BRBR/SLI, A. Santoro

© All rights reserved by Bosch Rexroth AG, even and especially in cases of proprietary rights applications. We also retain sole power of disposal, including all rights relating to copying, transmission and dissemination.

Final

Rexroth
Bosch Group



Muito obrigado !

© All rights reserved by Bosch Rexroth AG, even and especially in cases of proprietary rights applications.
We also retain sole power of disposal, including all rights relating to copying, transmission and dissemination.