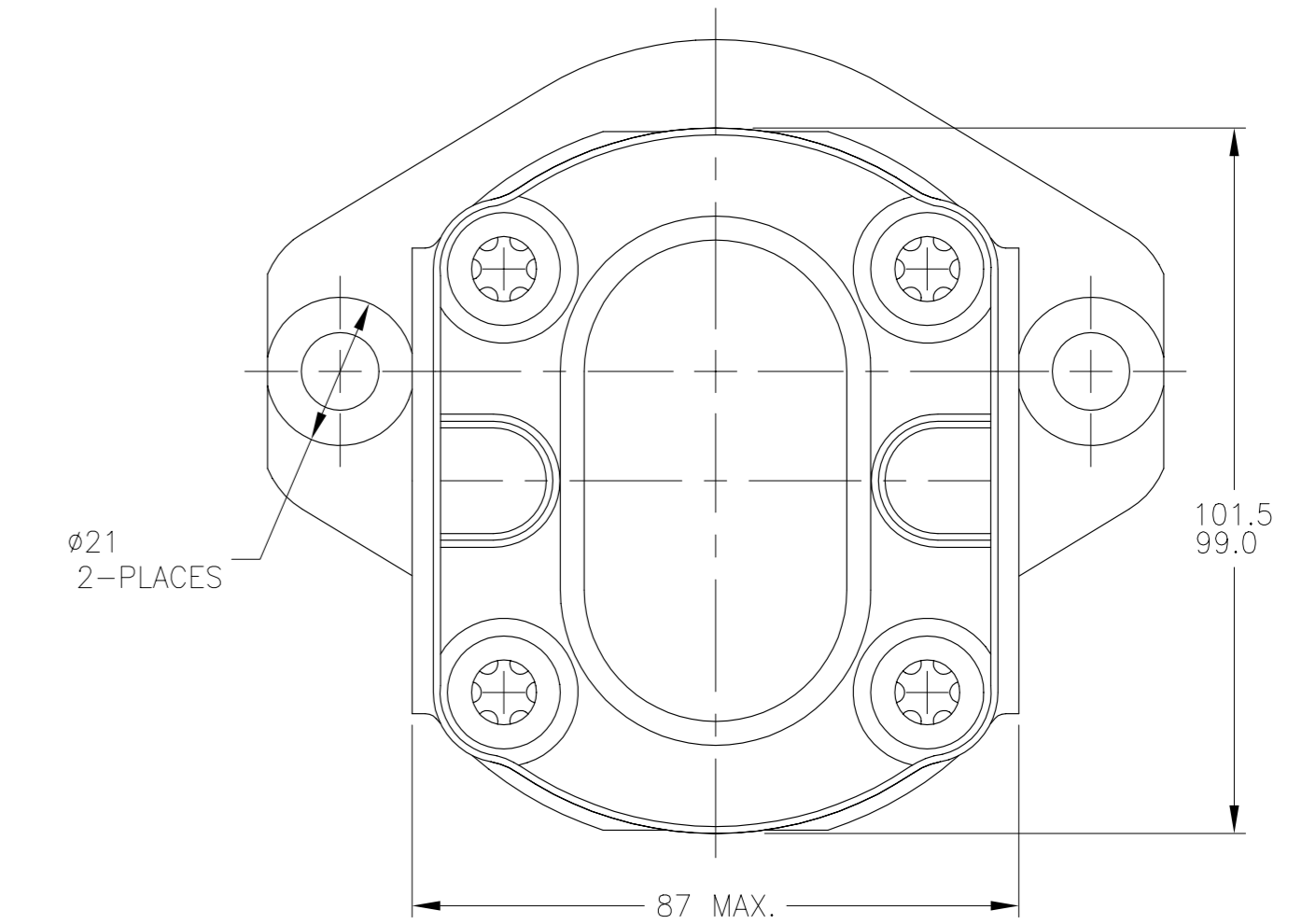
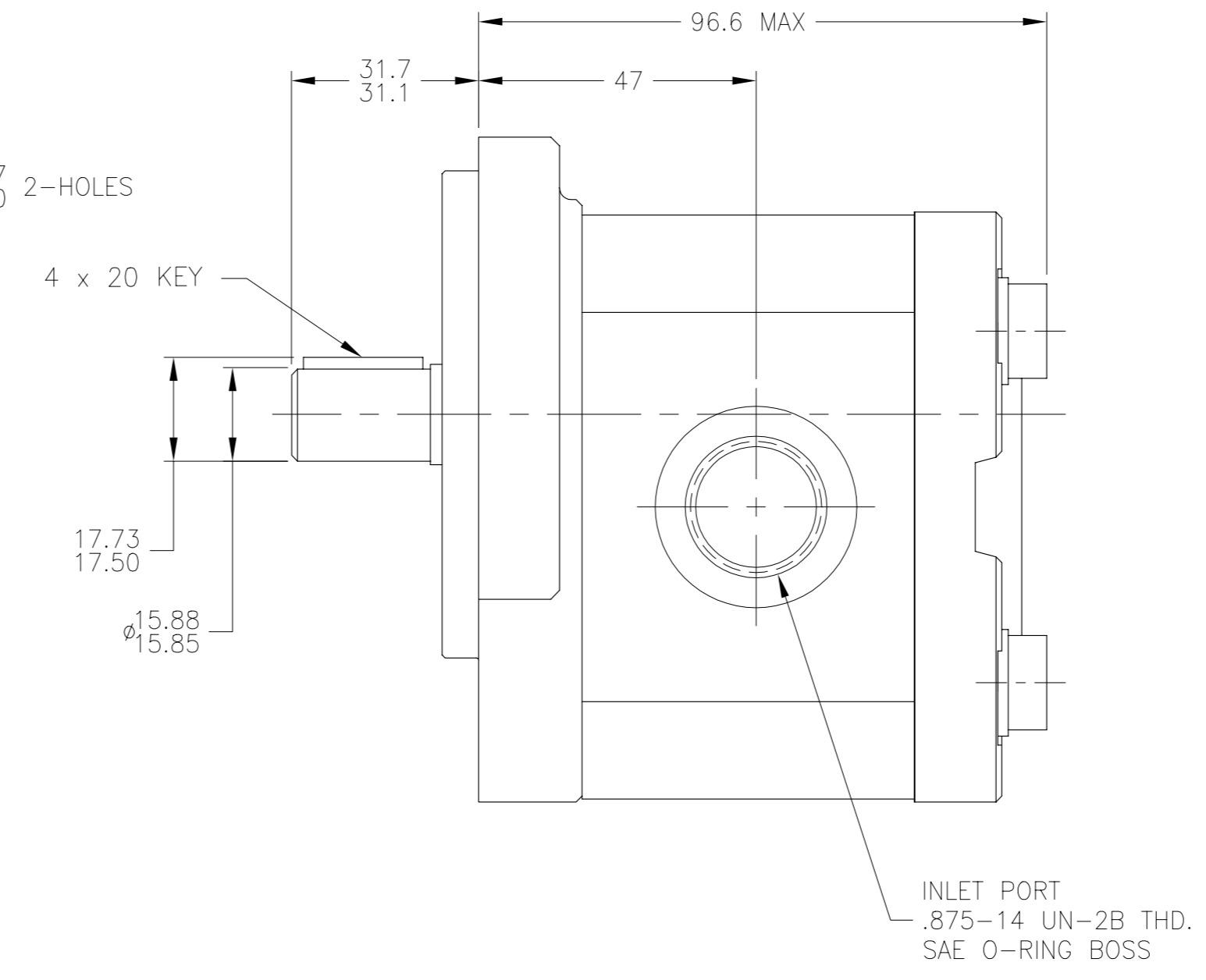
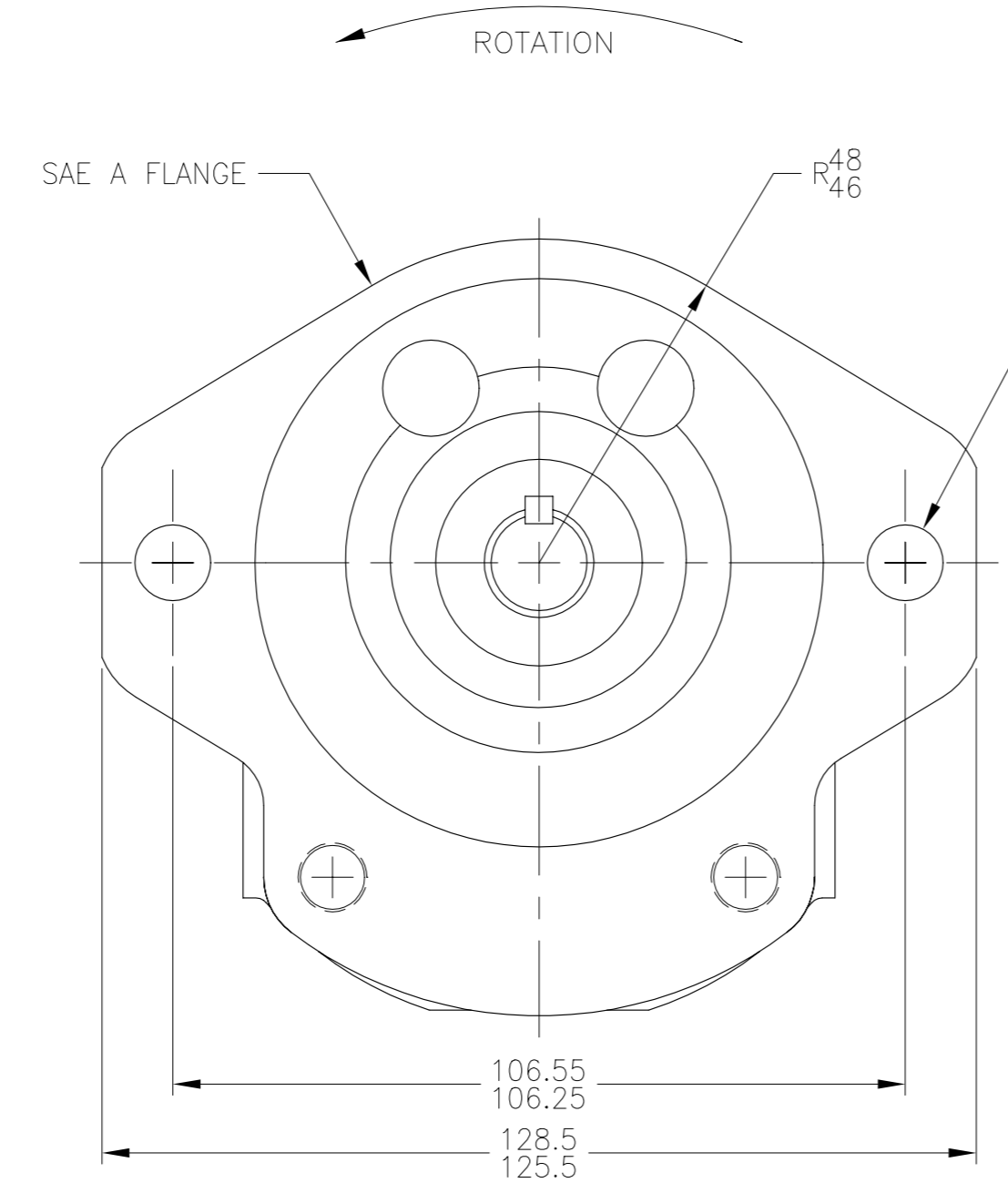
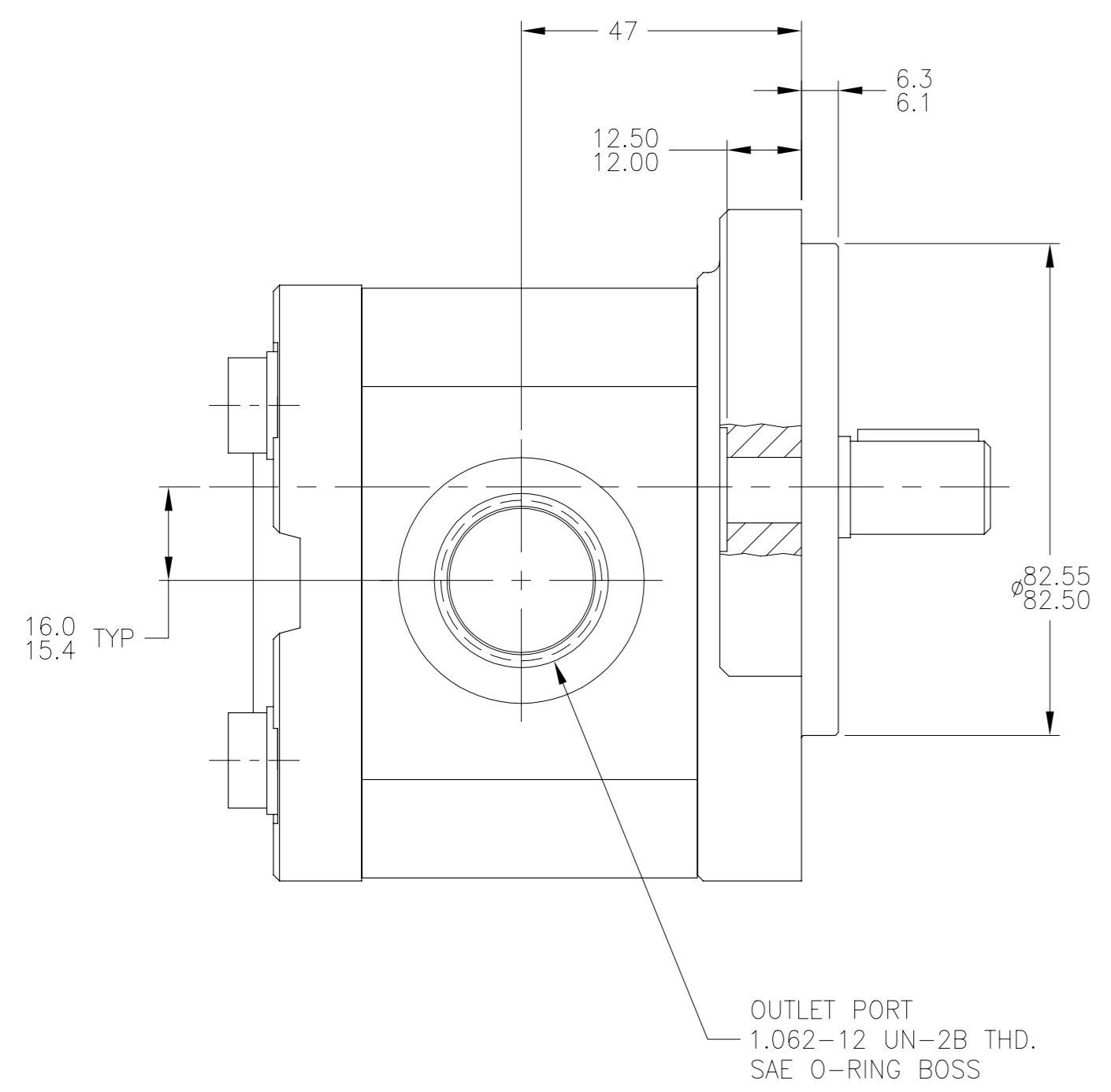


REV	DESCRIPTION	DATE	BY	CKD
	RELEASE TO PRODUCTION (CRR0484)	04-29-03	D.M.	D.N.
A	ADDED OUTLET PORT PRESSURE NOTE (CRR0911)	05-28-04	JPC	D.N.



- GENERAL NOTES:
- METRIC LINEAR MEASUREMENTS ARE IN MILLIMETERS
 - ROTATION VIEWING DRIVE END: COUNTERCLOCKWISE
 - INPUT FLOW: 24.3 L/MIN. AT 2000 RPM & 210 BAR MAXIMUM CONTINUOUS PRESSURE USING SAE NO. 10 OIL AT 48°C
 - OUTLET PORT PRESSURE NOT TO EXCEED 3 BAR.

DO NOT SCALE UNLESS OTHERWISE SPECIFIED: TOLERANCES PER DIN 7168	DRN: D.M. 04-29-03	DATE: 04-29-03	DESCRIPTION: AZ-M-F-12-011-LQR12MB-S0013	SCALE: FULL
LINEAR DIMENSION TOL.	DATE: 05-13-03	TITLE: MOTOR-GEAR, INSTALLATION	DNG. NO. 9 511 290 037	
0- 6= ±0.1	APPD:	REF:	SHEET 1 OF 1	
6- 30= ±0.2	DATE:	REV. A		
30- 120= ±0.3		MATERIAL:		
120- 400= ±0.5				
400-1000= ±0.8				
ANGLES = ± 1°				
METRIC	CAD-ORIGINAL			
THIRD ANGLE PROJECTION	Revisions thru CAD Only			

ALL PROPRIETARY RIGHTS IN THE SUBJECT MATTER HEREOF ARE RESERVED, AND NO PERMISSION IS GRANTED TO REPRODUCE THIS PRINT IN WHOLE OR PART, OR TO DISCLOSE ANY OF THE INFORMATION UPON IT TO OTHERS.

Rexroth
Bosch Group
WOOSTER, OHIO 44691