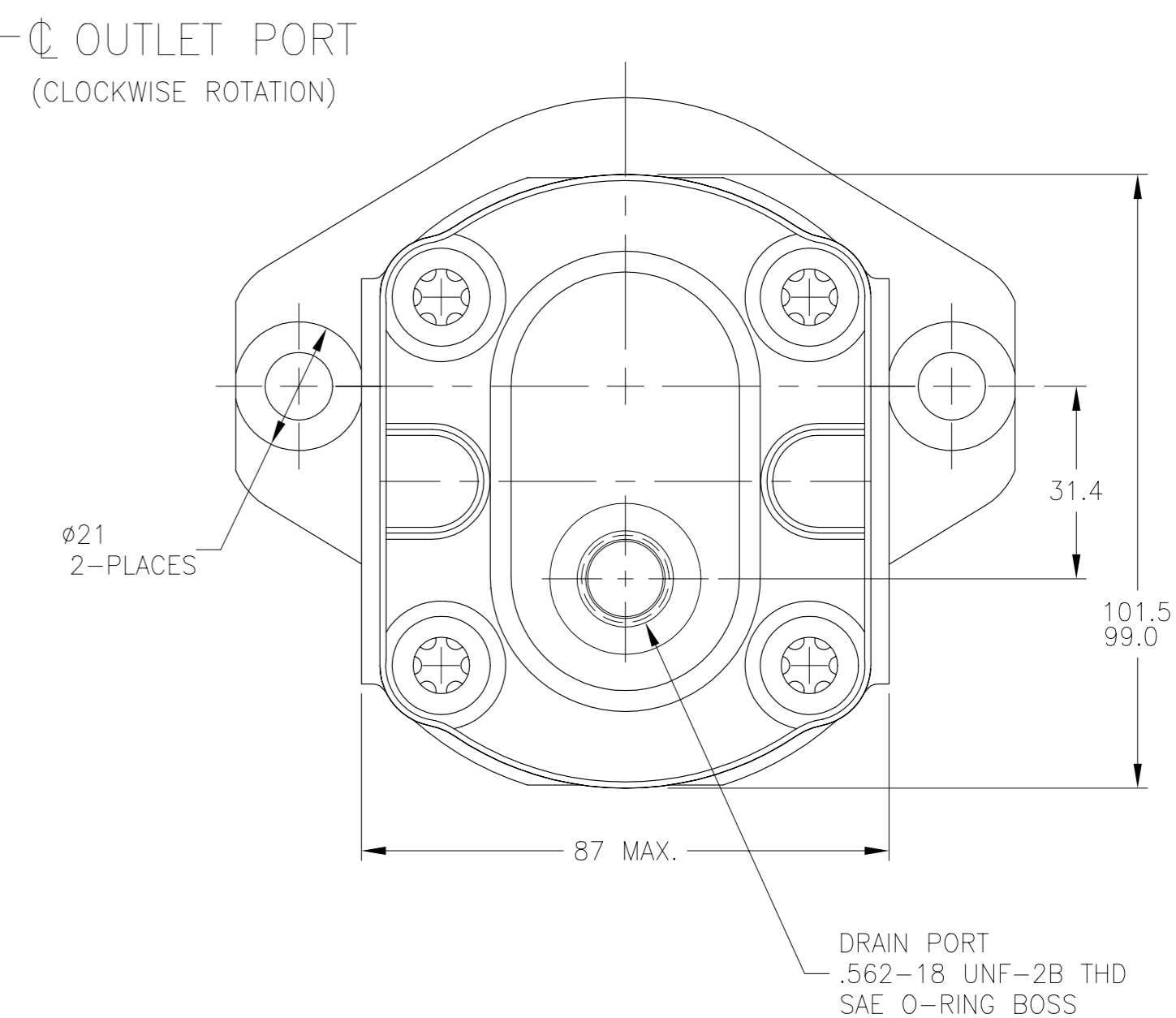
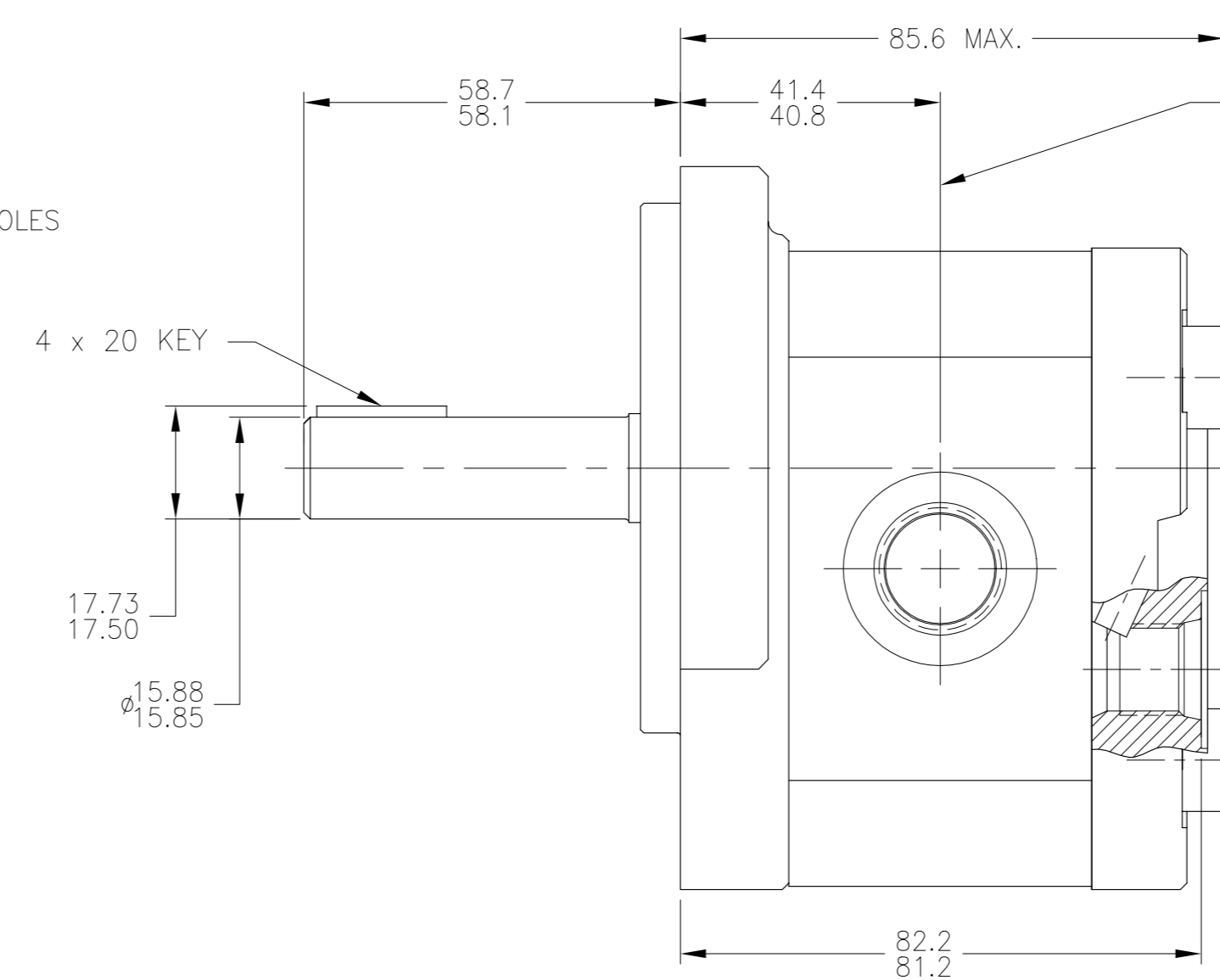
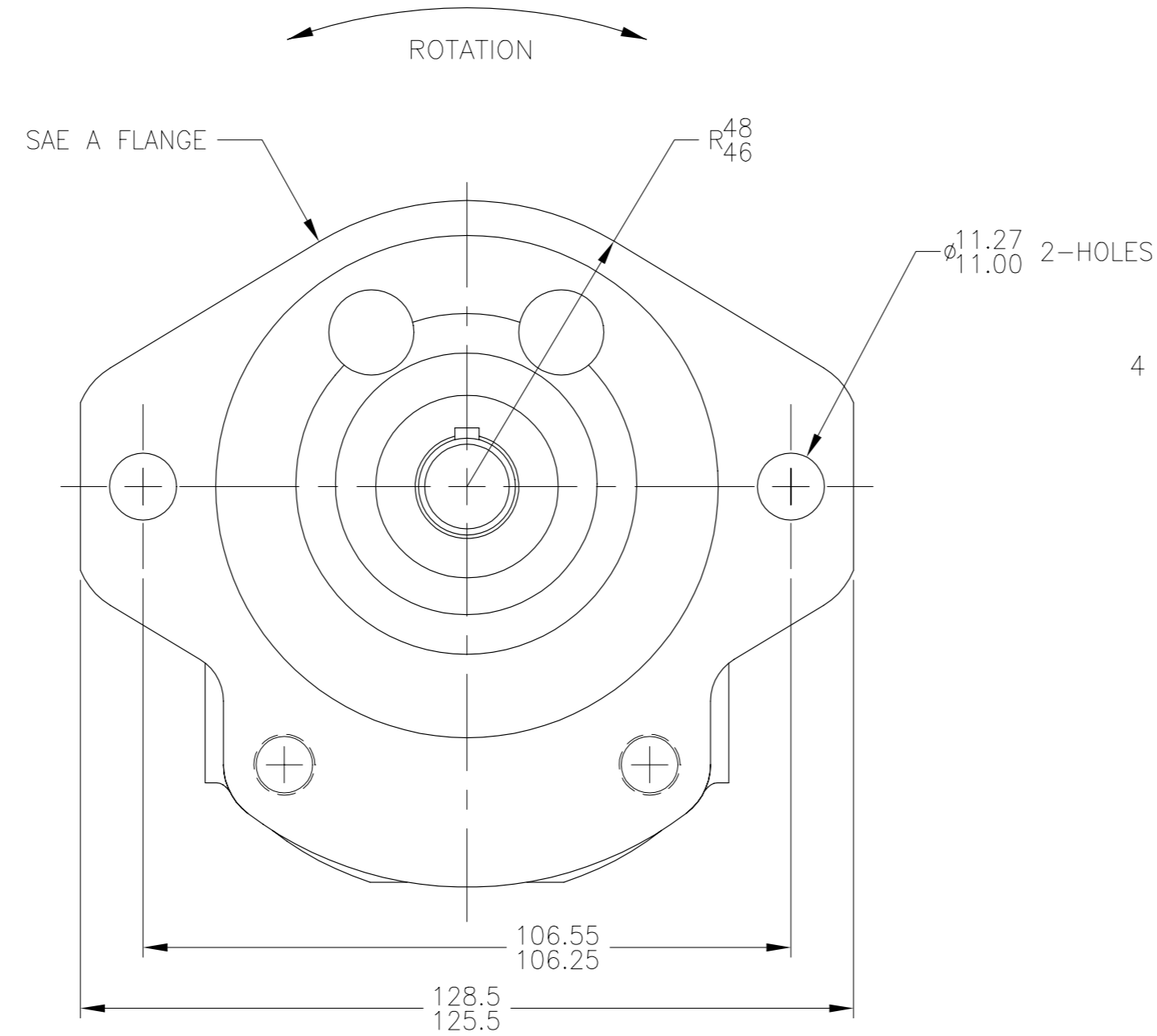
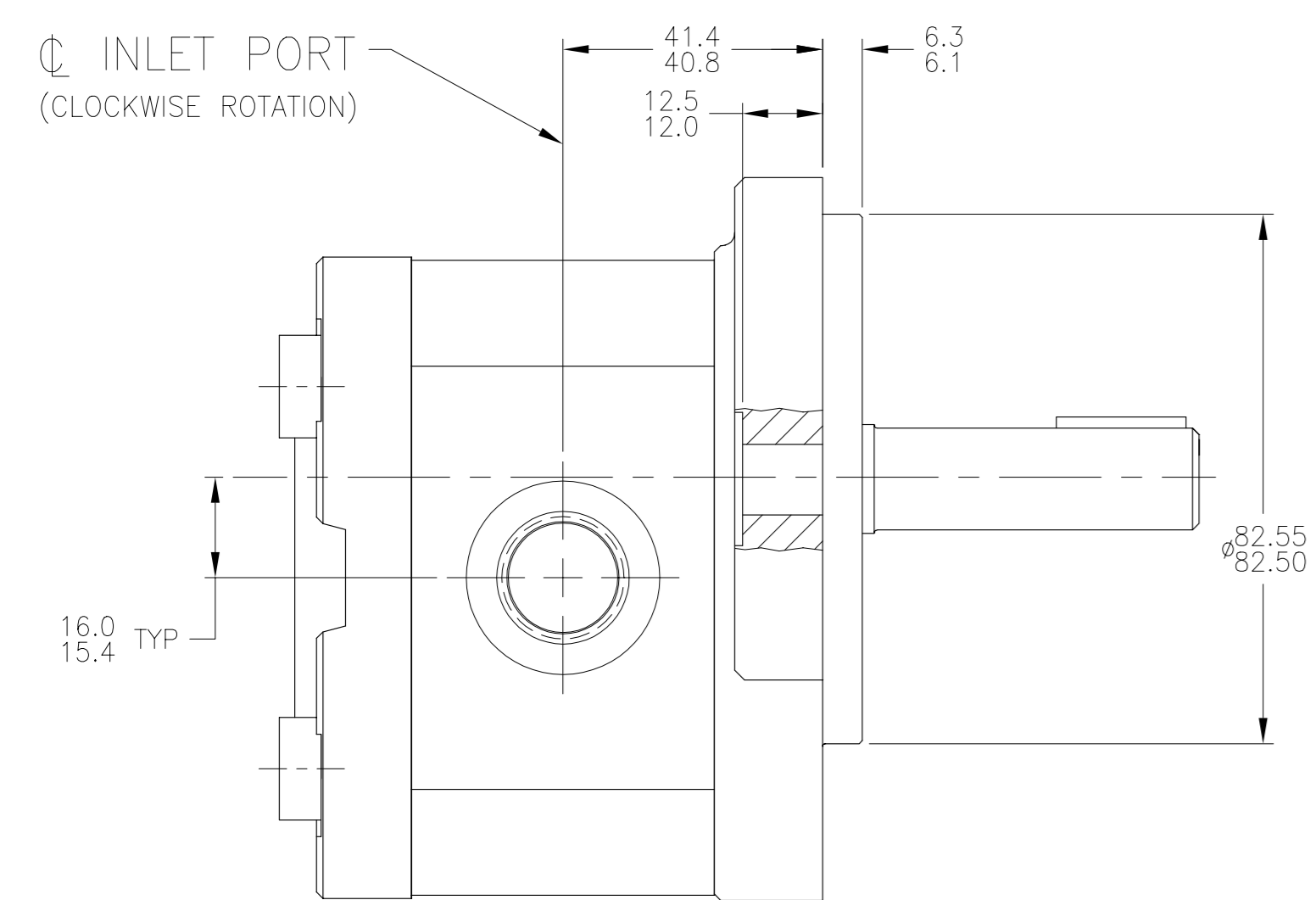


8	7	6	5	4	3	2	1
MODEL NUMBER	CATALOG NUMBER	DISPLACEMENT CM <sup>3</sup> /REV	INLET PORT (SAE O-RING BOSS)	OUTLET PORT (SAE O-RING BOSS)			
9511290038	AZ-M-F-12-005-UQR12MB-S0022	5.6	.875-14 UNF-2B THD.	.875-14 UNF-2B THD.			

REV	DESCRIPTION	DATE	BY	CKD
	RELEASED TO PRODUCTION	(CRR0523) 05-27-03	D.M.	



GENERAL NOTES:

1. LINEAR MEASUREMENTS ARE IN MILLIMETERS
2. ROTATION VIEWING DRIVE END: BI-ROTATIONAL
3. MAX RATED SPEED: 4000 RPM
4. MAXIMUM INLET PRESSURE: 210 BAR
5. INLET & OUTLET PORT CALL-OUTS ARE REVERSED FOR COUNTERCLOCKWISE ROTATION.
6. MAX. PRESSURE AT DRAIN PORT: 3 BAR

DO NOT SCALE UNLESS OTHERWISE SPECIFIED: TOLERANCES PER DIN 7186	DRN WAI	DATE 12-23-02	DESCRIPTION	SCALE FULL
LINEAR DIMENSION TOL. 0- 6= ±0.1 6- 30= ±0.2 30- 120= ±0.3 120- 400= ±0.5 400-1000= ±0.8 ANGLES = ± 1°	APP'D	DATE	TITLE MOTOR-GEAR, INSTALLATION	SHEET 1 OF 1
METRIC	REF. 2596-301-001	DWG. NO. 9511290038	REV. MATERIAL	
THIRD ANGLE PROJECTION	CAD-ORIGINAL	Revisions thru CAD Only		
	ALL PROPRIETARY RIGHTS IN THE SUBJECT MATTER HEREOF ARE RESERVED, AND NO PERMISSION IS GRANTED TO REPRODUCE THIS PRINT IN WHOLE OR PART, OR TO DISCLOSE ANY OF THE INFORMATION UPON IT TO OTHERS.			
	<b>Rexroth</b> Bosch Group			WOOSTER, OHIO 44691