

Cylinder accessories → Handling connection kits

**Easy-2-Combine, Connection kit**

► For combination: ZSC / GSP



Subbase  
Screws 1)

Aluminum, anodized  
Steel, galvanized

1) ISO 4762:2004



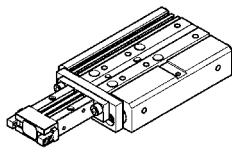
00120647

**Technical Remarks**

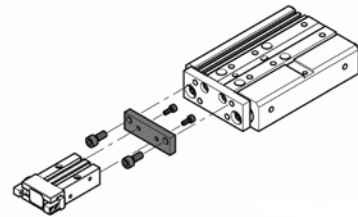
- The product is a part of the EasyHandling system.

Easy-2-Combine basic	Easy-2-Combine add-on part	Easy-2-Combine kit	Weight [kg]	Part No.
ZSC-10	GSP-P-08	CK1-LI-106	0.02	R412004678
ZSC-16	GSP-A-10, GSP-P-10, GSP-R-10	CK1-LI-101	0.02	R412000785
ZSC-20	GSP-A-16, GSP-P-16, GSP-R-16	CK1-LI-102	0.03	R412000786
ZSC-25	GSP-P-20	CK1-LI-103	0.07	R412000787

**front mounting: GSP-A/-P/-R**

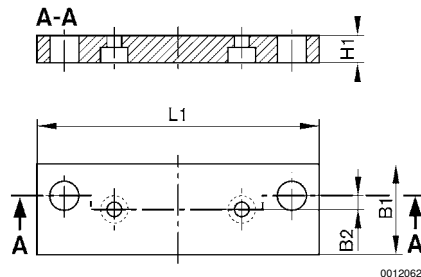


00120599



00120600

**CK1-LI-101 / -102 / -103 / -106**



00120628

## Cylinder accessories → Handling connection kits

**Easy-2-Combine, Connection kit**

► For combination: ZSC / GSP



Easy-2-Combine kit	B1	B2	H1	L1				
CK1-LI-106	16	4	6	46				
CK1-LI-101	16	3	6	50				
CK1-LI-102	20	4	8	62				
CK1-LI-103	24	4	8	80				

**Scope of delivery: A) connection plate B) screws**

Easy-2-Combine kit	A	B 1)						
CK1-LI-106	1 x	2 x M4x12; 2 x M3x8						
CK1-LI-101	1 x	2 x M3x8; 2 x M5x14						
CK1-LI-102	1 x	2 x M3x8; 2 x M6x16						
CK1-LI-103	1 x	2 x M4x12; 2 x M8x20						

1) tightening torque M3 = 2,2 Nm ± 10%; M4 = 3,5 Nm ± 10%; M5 = 6,0 Nm ± 10%; M6 = 10 Nm ± 10%; M8 = 25 Nm ± 10%