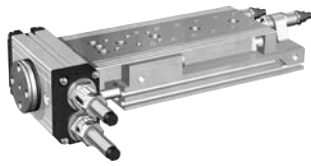


Cylinder accessories → Handling connection kits

Easy-2-Combine, Connection kit

► For combination: MSC / RCM



00120646

Screws 1)

Steel, galvanized

1) ISO 4762:2004

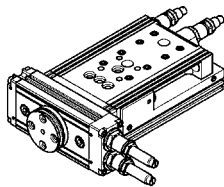
Technical Remarks

■ The product is a part of the EasyHandling system.

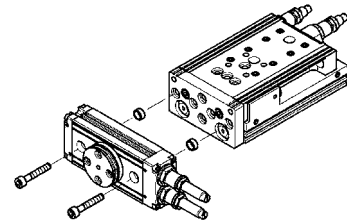
A) product 1, B) product 2, C) screws

A	B	C				
RCM-06	MSC-08	2 x M3x20				
RCM-08	MSC-12	2 x M4x20				
RCM-12	MSC-16	2 x M5x30				
RCM-12	MSC-20	2 x M5x30				
RCM-16	MSC-16	2 x M5x35				
RCM-16	MSC-20	2 x M5x35				
RCM-20	MSC-25	2 x M6x40				
RCM-25	MSC-25	2 x M6x45				

front mounting: transverse



00120597



00120598