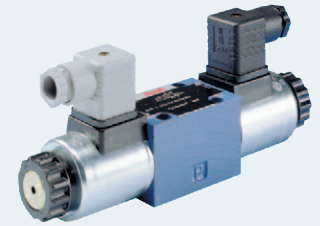
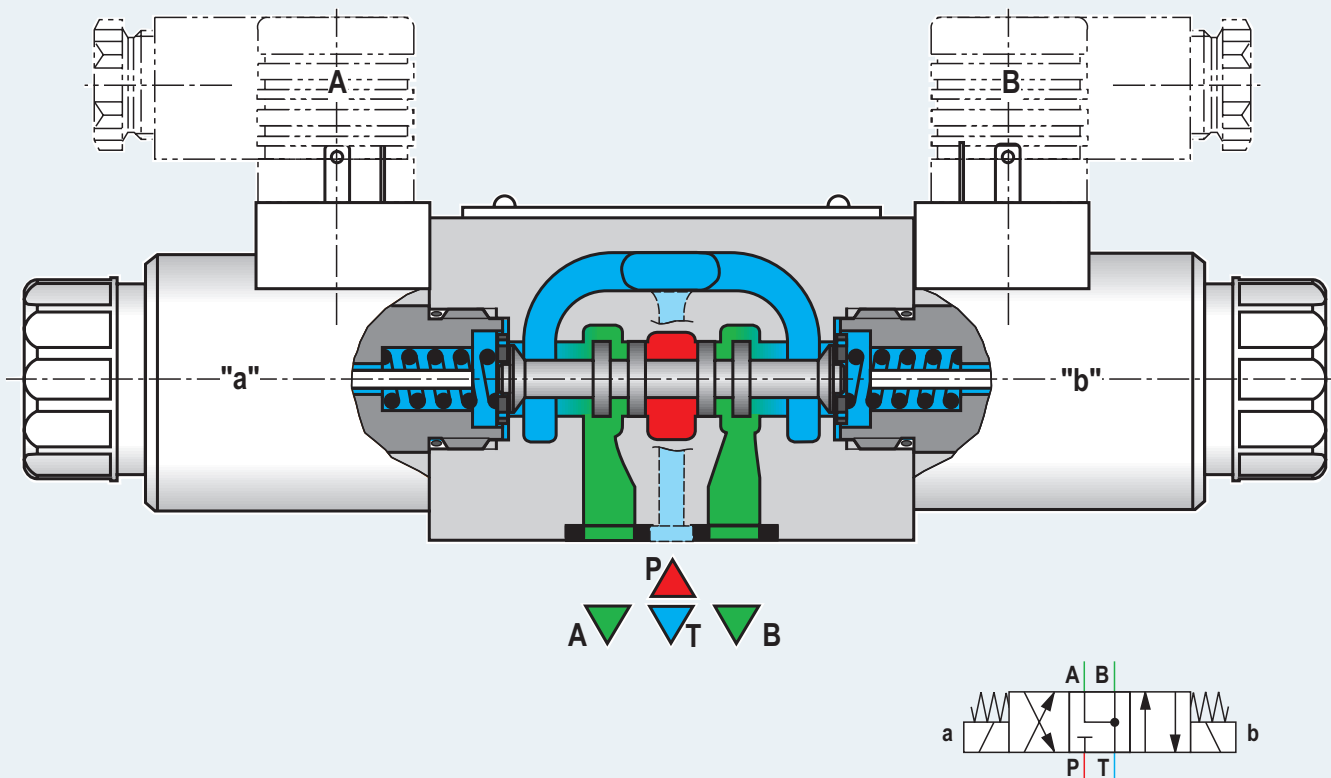


Directional control valve, direct operated

Type WE 6 ...E



- Pressure port P
- Control port A, B
- Tank port T



Features

- ▶ With different hand emergency override
- ▶ With different of electrical connectors

Optional

- ▶ Reduced electrical power requirement
- ▶ 8 Watt (for PLC controls)
- ▶ Soft switching version
- ▶ Spool position monitoring by means of inductive position switch and proximity sensor (contactless)

Technical Data

- ▶ Max. pressure 350 bar
- ▶ Max. flow 80 l/min

Example

Type 4WE 6 J6X/EG24N9K4

Subplate mounting, electro-hydraulic operated, spring centred, with individual connections