

Stop gate VE 2/D-200



- ▶ Pneumatic stop gate
- ▶ Continuously adjustable damping
- ▶ Optimal damping for workpiece pallet total weights between 50 kg and 200 kg
- ▶ Can be combined with WT 2 and WT 2/F

Notice: Combination with WT 2/LS not possible.

Dampened stopping of the first accumulating workpiece pallet. Stops one or more accumulating workpiece pallets at the defined stop surface of the workpiece pallet stop surface. When the pressure is released, the stop gate is

held in the lock position by a spring and the workpiece pallet is stopped. Mounted inside the tracks, directly on the conveyor section.

Recommended accessories

- ▶ Return stop VE 2/RS (3842531696)

Scope of delivery

- ▶ Incl. all fastening material to mount on the conveyor section ST 2/...

Condition on delivery

- ▶ Assembled

Ordering information

Product description	Material number
Stop gate VE 2/D-200	3842524895

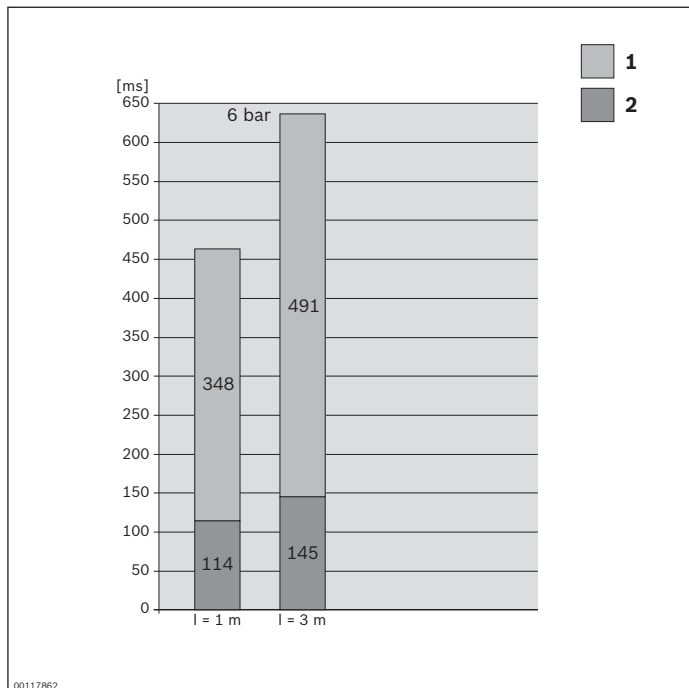
Technical data

Material number			3842524895
Max. total workpiece pallet weight	m_G	kg	200
Min. workpiece pallet weight	m	kg	5
ESD			Yes
Material specification			Housing: Aluminum; hard anodized Stop cam: Steel; hardened
Operating temperature ¹⁾		°C	+5 ... +60
Required compressed air connection	p	bar	4 ... 6
Push in air connection	\varnothing	mm	6

¹⁾ High-temperature stop gate on request

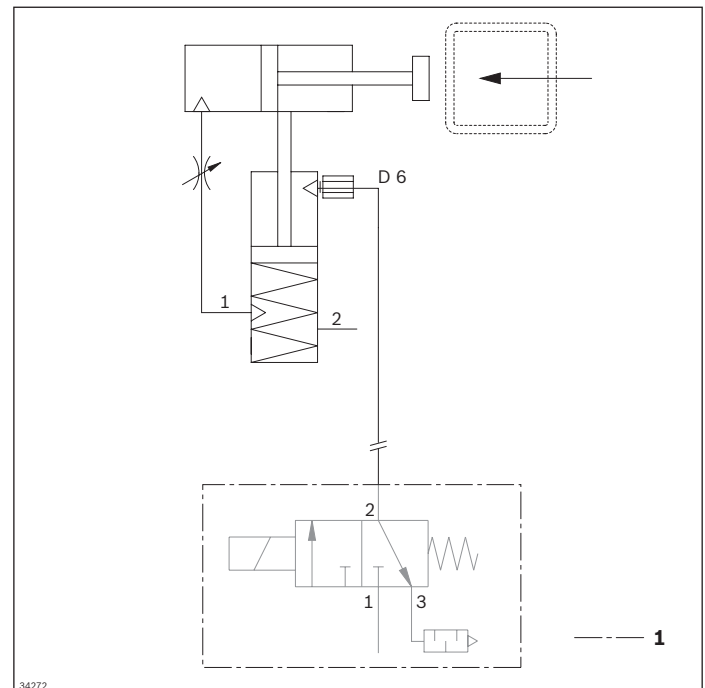
Permitted total weight of workpiece pallet m_G (kg)	Nominal speed v_N (m/min)
200	6
140	9
100	12
100	15
100	18
55	24
35	30

Opening and shutting times



l = Hose length
1 Close
2 Open at 4 bar

Circuit diagram



1 Not included in the scope of delivery

The data specified above only serves to describe the product. Due to the continuing development of our products, no statements concerning a certain condition or suitability for a certain application can be derived from our information. The information given does not exempt the user from the obligation of own judgment and verification. It must be remembered that our products are subject to a natural process of wear and aging.

