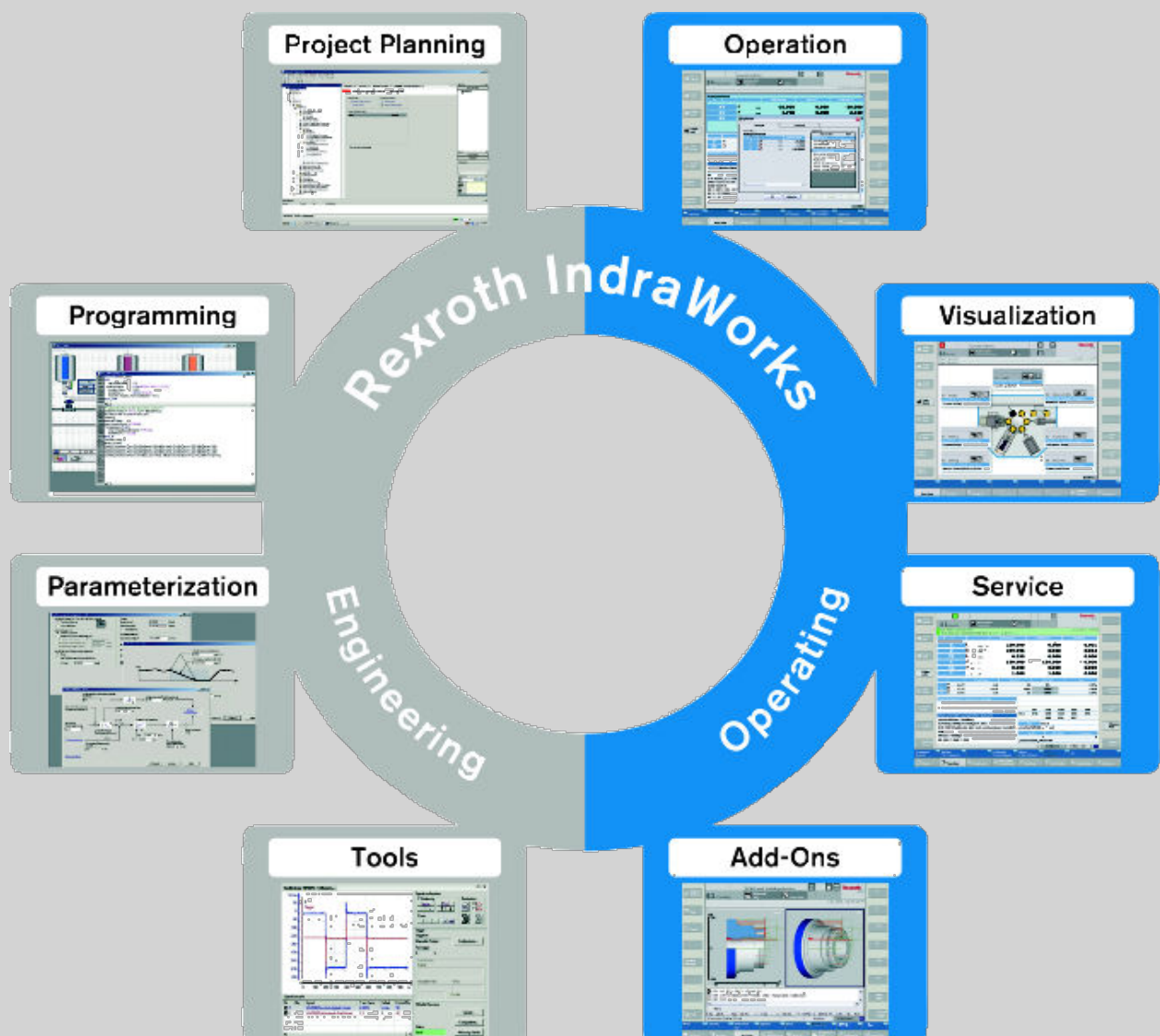


IndraWorks 14VRS

Software Installation

Commissioning Manual
R911344286

Edition 06



Title	IndraWorks 14VRS Software Installation
Type of Documentation	Commissioning Manual
Document Typecode	DOK-IWORKS-SOFTINS*V14-CO06-EN-P
Internal File Reference	RS-e2d5d4813c5b924c0a6846a5003ede0c-6-en-US-3
Revision history	Edition 06, 2023-05 Refer to tab. 1-1 "Revision history" on page 1
Copyright	© Bosch Rexroth AG 2023 All rights reserved, also regarding any disposal, exploitation, reproduction, editing, distribution, as well as in the event of applications for industrial property rights.
Liability	The specified data is intended for product description purposes only and shall not be deemed to be a guaranteed characteristic unless expressly stipulated in the contract. All rights are reserved with respect to the content of this documentation and the availability of the product.
Editorial Department	Engineering Project-Office and Infrastructure (DC-AE/EPI) - Editorial Department and Product Provision, RoWi (MiSc/MePe)

Table of Contents

	Page
1 About this documentation.....	1
1.1 Validity of the documentation.....	1
1.2 Required and supplementing documentation IndraWorks.....	2
1.2.1 Engineering.....	2
1.2.2 Engineering & Visualization.....	3
1.2.3 Visualization.....	4
1.3 Information representation.....	4
1.3.1 Using safety instructions.....	4
1.3.2 Names and abbreviations.....	6
1.4 Customer feedback.....	6
2 Important instructions on use.....	7
2.1 Intended use.....	7
2.1.1 Introduction.....	7
3 General Information on the Installation.....	9
3.1 Pre-Installed User Interface.....	9
3.2 Installation Program and this Documentation.....	9
3.3 System Requirements.....	9
3.3.1 Installing IndraWorks Engineering on PCs of a Third Party Manufacturer.....	9
3.3.2 Control hardware for the CNC system MTX.....	10
3.3.3 Control Hardware for the system IndraLogic XLC / IndraMotion MLC.....	10
3.3.4 Supported Operating Systems.....	10
4 Performing an installation.....	11
4.1 General information.....	11
4.2 New or parallel installation of Rexroth IndraWorks.....	11
4.2.1 General information.....	11
4.2.2 Hard disk installation.....	11
4.2.3 DVD installation.....	12
4.3 Updating IndraWorks.....	18
4.3.1 DVD installation.....	18
4.3.2 Updating embedded devices.....	19
4.3.3 Online help/Software update for IndraWorks.....	20
4.3.4 Software extension via AddOn.....	21
4.3.5 Silent installation.....	22
4.4 Demo license.....	23
4.4.1 General information.....	23
4.4.2 Start behavior of IndraWorks with demo license.....	23
4.4.3 Reminder dialog in IndraWorks operation.....	25
4.5 Patch installation.....	25
4.5.1 General information.....	25
4.5.2 Wizard controlled patch installation.....	25

Table of Contents

	Page
4.5.3	Manually installing a patch..... 26
4.5.4	Installation information..... 27
4.6	Postinstalling online helps..... 28
4.7	Uninstalling Rexroth IndraWorks..... 30
5	MLPI SDK installation..... 31
6	Licensing IndraWorks components..... 33
6.1	General Information..... 33
6.2	Installing a License..... 33
6.3	Removing a License..... 35
6.4	Show License Properties..... 35
7	More information..... 37
7.1	Version display..... 37
7.1.1	Calling the version display..... 37
7.1.2	Showing the version display..... 37
7.2	Protection from access by third party PCs, protection against viruses..... 38
7.2.1	Operating virus scanners in connection with Bosch Rexroth control systems..... 38
8	Service and support..... 41
	Index..... 43

1 About this documentation

Editions of this documentation

Edition	Release date	Note
01	2014-07	First edition
02	2014-11	Updating IndraWorks Operation to embedded devices
03	2016-06	Changes in chapter "Supported operating systems"
04	2016-11	Changes in chapters "Installation from hard drive" and "Installation from DVD"
05	2018-06	Adjustments in the chapter "Installation of IndraWorks Engineering on PCs of another manufacturer"
06	2023-05	Changes in chapter 3.3.4 "Supported Operating Systems" on page 10 Changes in chapter 4.7 "Uninstalling Rexroth IndraWorks" on page 30

Tab. 1-1: Revision history

1.1 Validity of the documentation

Overview on target groups and product phases

The following graphic refers to the bordered activities, product phases and target groups of the present documentation.

Example: The target group "Programmer" can "parameterize" in the product phase "Engineering" using this documentation.

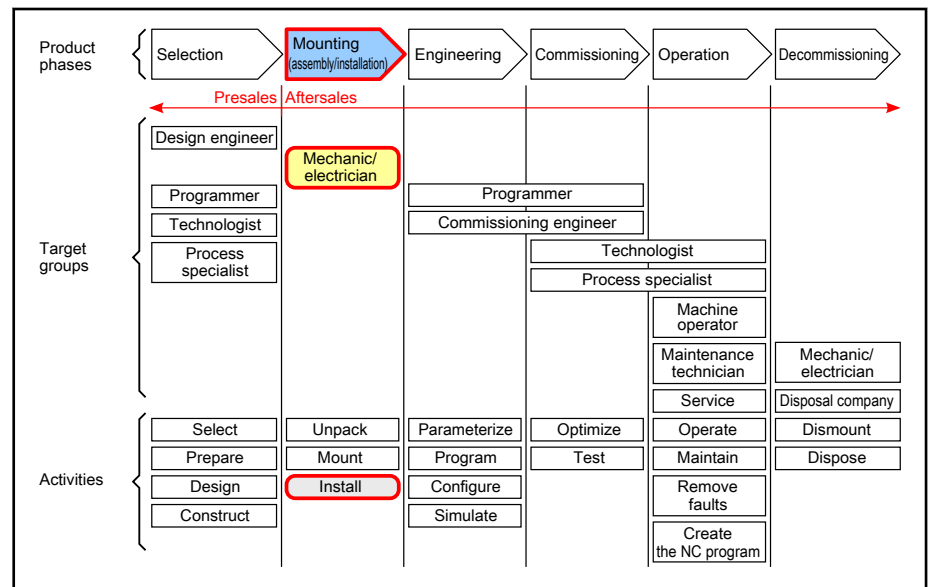


Fig. 1-1: Assigning this documentation to the target groups, product phases and target group activities

1.2 Required and supplementing documentation IndraWorks

1.2.1 Engineering

Documentation titles with type codes and part numbers

<p>IndraWorks 14VRS Software Installation DOK-IWORKS-SOFTINS*V14-CORS-EN-P, R911344286</p> <p>This documentation describes the IndraWorks installation.</p>
<p>IndraWorks 14VRS Engineering DOK-IWORKS-ENGINEE*V14-APRS-EN-P, R911343566</p> <p>This documentation describes the use of IndraWorks in which the Rexroth Engineering tools are integrated. It includes instructions on how to work with IndraWorks and how to operate the oscilloscope function.</p>
<p>IndraWorks 14VRS PLC Programming System IndraLogic 2G DOK-IWORKS-IL2GPRO*V14-APRS-EN-P, R911343571</p> <p>This documentation describes the PLC programming tool IndraLogic 2G and its use. The documentation includes the basic use, first steps, visualization, menu items and editors.</p>
<p>IndraWorks 14VRS Basic Libraries IndraLogic 2G DOK-IL*2G*-BASLIB**V14-LIRS-EN-P, R911343920</p> <p>This documentation describes the system-comprehensive PLC libraries.</p>
<p>Rexroth IndraWorks 14VRS WinStudio 7.4 DOK-IWORKS-WINSTUD*V14-APRS-EN-P, R911341585</p> <p>This "User Manual and Technical Reference Book" supports the user in achieving the best results with the "Rexroth WinStudio"™ software. The document provides technical information and step-by-step instructions to create web-enabled HMI/SCADA programs.</p>
<p>Rexroth IndraWorks CamBuilder 13VRS DOK-IWORKS-CAMBUIL*V13-APRS-EN-P, R911336291</p> <p>This documentation describes the basic principles and operation of the CamBuilder, the cam editing tool.</p>
<p>IndraWorks 14VRS Field Buses DOK-IWORKS-FB*****V14-APRS-EN-P, R911341485</p> <p>This documentation describes field bus connections and local periphery connections supported by the systems IndraLogic XLC, IndraMotion MLC and IndraMotion MTX. The focus of this documentation lies in the configuration, parameterization, commissioning and diagnostics of different periphery connections.</p>
<p>WebAssistant DOK-GENERL-WEB*ASSIST*-APRS-EN-P, R911381469</p> <p>This documentation describes the WebAssistant. The WebAssistant is a web-based diagnostic tool used to access a control system via a high-speed Ethernet connection. The WebAssistant allows OEMs, end users and service engineers to access and remotely diagnose a system. A PC with Firefox version 45 or above or Google Chrome version 54 or above is required.</p> <p>The following control variants are supported:</p> <ul style="list-style-type: none"> • IndraMotion MLC L45/L65/L75/XM21/XM22/XM42/VPx • IndraLogic XLC L45/L65/L75/VEP

<p>IndraWorks IndraMotion Service Tool</p> <p>DOK-IWORKS-IMST*****-APRS-DE-P, R911341383</p> <p>This documentation describes the IndraMotion Service Tool (IMST). The IMST is a web-based diagnostic tool used to access a control system via an Ethernet high-speed connection. The IMST allows OEMs, end users and service engineers to access and remotely diagnose a system. The PC has to use at least Internet Explorer 8, Firefox 3.5 or a higher version.</p> <p>The following control variants are supported:</p> <ul style="list-style-type: none"> • IndraMotion MLC L45/L65/L75/XM21/XM22/XM42/VPx • IndraLogic XLC L45/L65/L75
<p>Rexroth IndraDrive Service Tools IMST/IDST</p> <p>DOK-IM*MLD-IMSTIDSTV13-RERS-EN-P, R911342652</p> <p>This documentation describes the IndraMotion Service Tool (IMST) and the IndraDrive Service Tool (IDST). These are web-based diagnostic tools to access a drive system using an Ethernet high-speed connection. The Service Tool allows OEMs, end users and service engineers to access and remotely diagnose a system.</p>
<p>IndraWorks SafeLogic 14VRS First Steps</p> <p>DOK-IWORKS-SL*STEP*V14-CORS-EN-P, R911341520</p> <p>This documentation allows to easily start with the safety control technology SafeLogic. Project examples are used to provide knowledge in the fields of installation, configuration, commissioning, troubleshooting and diagnostics.</p>
<p>Rexroth IndraWorks 12VRS FDT Container</p> <p>DOK-IWORKS-FDT*CON*V12-APRS-EN-P, R911334398</p> <p>This documentation describes the IndraWorks FDT Container functionality. It includes the activation of the functionality in the project and working with DTMs.</p>
<p>IndraWorks 14VRS Field Bus Libraries</p> <p>DOK-IWORKS-FB*LIB**V14-LIRS-EN-P, R911343575</p> <p>The documentation describes the field bus libraries for the IndraLogic XLC, IndraMotion MLC and IndraMotion MTX systems</p>
<p>IndraWorks 14VRS Remote Support</p> <p>DOK-IWORKS-REMOTE**V14-APRS-EN-E, R911382628</p> <p>This documentation supports during the installation and use of a remote support software compatible with the current operating systems Win7 - Win10.</p>
<p>Rexroth IndraWorks Remote Condition Monitoring RMB_TechRCM</p> <p>DOK-IWORKS-TEC*RCM*V14-LIRS-EN-E, R911343671</p> <p>This documentation describes the individual functions of the "Remote Condition Monitoring" system and the most important use cases to quickly evaluate the state of the connected machine/systems.</p>
<p>IndraWorks 14VRS SafeLogic - Project Configuration, Release 02V08</p> <p>DOK-IWORKS-SL**PRJ*V14-APRS-EN-P, R911341694</p> <p>This documentation describes the creation and the programming of SafeLogic projects in IndraWorks Engineering.</p>

Tab. 1-2: IndraWorks documentation overview - Engineering

1.2.2 Engineering & Visualization

Documentation titles with type codes and part numbers

<p>IndraWorks 14VRS Energy Efficiency Management</p> <p>DOK-IWORKS-4EE*****V14-APRS-EN-P, R911339229</p> <p>This document describes the application of the Energy Efficiency Management function in the MLC, XLC and MTX. Project planning, configuration and visualization of the system are explained using example applications.</p>
--

Tab. 1-3: IndraWorks documentation overview - Engineering & Visualization

1.2.3 Visualization

Documentation titles with type codes and part numbers

<p>IndraWorks 14VRS HMI DOK-IWORKS-HMI*****V14-APRS-EN-P, R911343569</p> <p>This documentation describes the HMI user interface IndraWorks Operation, its operation and functions and the configuration in IndraWorks Engineering.</p>
--

Tab. 1-4: IndraWorks documentation overview - Visualization

1.3 Information representation

1.3.1 Using safety instructions

Structure of the safety instructions

The safety instructions are structured as follows:

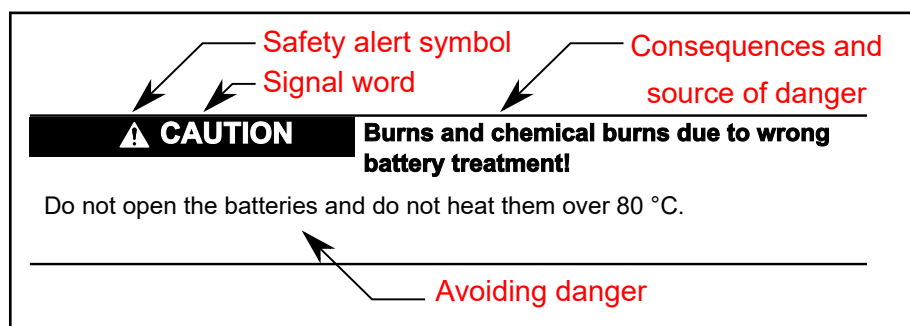


Fig. 1-2: Structure of the safety instructions

Explaining signal words and safety alert symbol

The safety instructions in this documentation contain specific signal words (danger, warning, caution, notice) and, if necessary, a safety alert symbol (according to ANSI Z535.6-2006).

The signal word draws attention to the safety instruction and indicates the risk potential.

The safety alert symbol (triangular safety reflector with exclamation marks), preceding the signal words Danger, Warning, Caution indicates hazards for persons.


<p>⚠ DANGER</p> <p>In case of non-compliance with this safety instruction, death or serious injury will occur.</p>
<p>⚠ WARNING</p> <p>In case of non-compliance with this safety instruction, death or serious injury can occur.</p>
<p>⚠ CAUTION</p> <p>In case of non-compliance with this safety instruction, minor or moderate injury can occur.</p>

NOTICE


In case of non-compliance with this safety instruction, material damage can occur.

Symbols used

Pointers are displayed as follows:

 This is a note.

Tips are displayed as follows:

 This is a tip.

Explaining the signal alert symbol on the device



If this symbol is on your device, you have to observe the documentation on the device. The respective documentation informs on the type of hazard as well as the steps required to avoid this hazard.

1.3.2 Names and abbreviations

Term	Explanation
Ethernet	Communication interface
IP address	Network address
IWE	IndraWorks Engineering
IWO	IndraWorks Operation
Patch	Software update installation
Test license	Activation of functions subject to license for 30 days.

Tab. 1-5: Names and abbreviations used

1.4 Customer feedback

Customer requests, comments or suggestions for improvement are of great importance to us. Please email your feedback on the documentations to Feedback.Documentation@boschrexroth.de. Directly insert comments in the electronic PDF document and send the PDF file to Bosch Rexroth.

2 Important instructions on use

2.1 Intended use

2.1.1 Introduction

Bosch Rexroth products are developed and manufactured according to the state-of-the-art. The products are tested prior to delivery to ensure operating safety and reliability.

The products may only be used as intended. If the products are not used as intended, situations can occur that result in damage to property or personal injury due to unintended use of products.



Bosch Rexroth shall not assume any warranty, liability or payment of damages in case of damage resulting from a non-intended use of the products; the user shall solely bear all risks from unintended use of the products.

Before using Bosch Rexroth products, the following requirements have to be met to guarantee the intended use of the products:

- Anybody handling Bosch Rexroth products in any way is obliged to read and consent to the relevant safety instructions and the intended use.
- If the product takes the form of hardware, then they must remain in the original state, in other words, no structural changes are permitted. It is not permitted to decompile software products or alter source codes.
- Do not install damaged or defective products or use them in operation.
- It has to be ensured that the products have been installed as described in the relevant documentation.

3 General Information on the Installation

3.1 Pre-Installed User Interface

The user interface and the related firmware are already installed on a configured industrial PC.

The following chapter deals with software updates for pre-installed Bosch Rexroth industrial PCs. If a PC of a third party manufacturer is to be used, the software installation for the user interface is described in the following chapters.

3.2 Installation Program and this Documentation

What is installed?	The installation program installs the IndraWorks software as well as the corresponding tools, depending on the purchased license.
Who executes the installation?	For the installation, experience in working with PCs and the operating system is required. Administrator rights are required to execute the installation.
Installation program	The installation program decompresses and installs IndraWorks and the associated files from the DVD on your hard disk. Updates, change installations and uninstalling the software can also be executed using this installation program.
Documentation	This manual describes how to install, setup, update and remove IndraWorks.



Read these installation instructions and, if necessary, additional documents **before** installing the software.

3.3 System Requirements

3.3.1 Installing IndraWorks Engineering on PCs of a Third Party Manufacturer

Hardware Requirements for IndraWorks Engineering

Minimum requirements

- IBM-compatible PC, min. requirement: Pentium IV
- CPU clock rate 2 GHz
- RAM: 4 GB
- 5 GB free disk capacity on C: drive (incl. temporary memory during installation)
- DVD drive
- *Graphics resolution*
 - 800x600 pixels
 - Color depth: 16 bits



IndraWorks Engineering is intended for a screen resolution of 96 DPI (default setting). If other settings are used, this classifies as unintended use and can result in an incomplete or incorrect display of the screen elements.

Recommended requirements

- IBM-compatible PC, i5 quad core

**Hardware Requirements for
Rexroth IndraWorks CamBuilder**

- RAM: 4 GB for 64 bit operating systems

The hardware requirements as for IndraWorks Engineering apply.

To improve the performance, an OpenGL-capable graphic card can be used.

**Hardware Requirements for
Rexroth IndraWorks Simulation**

The hardware requirements as for IndraWorks Engineering apply.

To improve the performance, an OpenGL-capable graphic card can be used.

**Hardware Requirements for
"IndraWorks D" and "IndraMotion
MLD"**

The minimum requirements as for IndraWorks Engineering apply.

3.3.2 Control hardware for the CNC system MTX

As a scalable system, the CNC system MTX currently consists of the following system variants:

- MTX standard, based on the control hardware IndraControl L45
- MTX performance, based on the control hardware IndraControl L65
- MTX advanced, based on the IndraControl L85 control component group

For details, please refer to the MTX System Description (DOK-MTX***-SYS*DES*V14-PRRS-EN-P).

3.3.3 Control Hardware for the system IndraLogic XLC / IndraMotion MLC

The IndraMotion XLC / IndraMotion MLC control system supports the following hardware platforms using the current version:

- IndraControl L25
- IndraControl L45
- IndraControl L65
- IndraControl XM2*

Depending on the hardware, different functionalities such as field bus interfaces, function modules, RobotControl, axis number as well as cycle times are supported. For details, please refer to the IndraMotion MLC Functional Description (DOK-XLCMLC-FUNC***V14-APRS-EN-P) or the hardware project planning manuals.

Part of this description is the installation of IndraWorks Engineering to configure the IndraLogic XLC and IndraMotion MLC.

3.3.4 Supported Operating Systems

The following operating systems are supported:

- Microsoft Windows 10
- Microsoft Windows 11



Pre-installed industrial PCs delivered by the manufacturer Bosch Rexroth contain a released service pack for the respective operating system at the time of delivery of Bosch Rexroth.

The user is responsible for installing subsequent service packs or Windows updates.

4 Performing an installation

4.1 General information

The installation of the user interface requires knowledge of PCs and the operating system.

Administrator rights are required to install IndraWorks and its installation options.

To enable the IndraLogic communication in IndraWorks, the ports 1200 and 1210 have to be enabled in the firewall setting .



It is recommended to disable an active virus scanner during the installation, to rule out any influences on scripts running during the setup.



If several IndraWorks versions are installed on the PC, administrator rights are required for switching.



No administrator rights are required to execute IndraWorks.

Access data

Operation terminals installed and delivered by the manufacturer Bosch Rexroth are equipped with Windows XP, Windows 7 or Windows 10. The terminals are assigned with the following access data:

- User name: Rexroth
- Password: Rexroth

Log in as an administrator

How to login as administrator on operation terminals preinstalled by Bosch Rexroth:

- User name: Admin
- Password: Admin

4.2 New or parallel installation of Rexroth IndraWorks

4.2.1 General information

Installation DVDs are available for the following IndraWorks variants:

- MTX
- XLC/MLC
- MLD
- D
- DS

4.2.2 Hard disk installation

How to install from the hard disk:

1. Create a directory on the hard drive, e.g. with the name "DVD"
2. Copy the contents of the DVD 1 to the DVD directory
3. Copy the contents of the DVD 2 to the DVD directory
4. Start SETUP.EXE from the hard drive from the DVD directory

The individual installation steps are described in the following chapter.

4.2.3 DVD installation

It is assumed that a DVD drive "E" is used for the installation.

1. Insert the DVD in the DVD drive.



If "Autorun" runs on your system and it is to be installed from a local DVD drive, the installation wizard starts automatically. Subsequently, continue with step 4.

To install from a DVD drive shared in the network, use Windows Explorer to navigate to the DVD drive and double-click on "Setup.exe" to start it. Continue with step 4.

2. In the start menu, click **Run**.
3. To install from a DVD, type "E:\SETUP.EXE" for example.

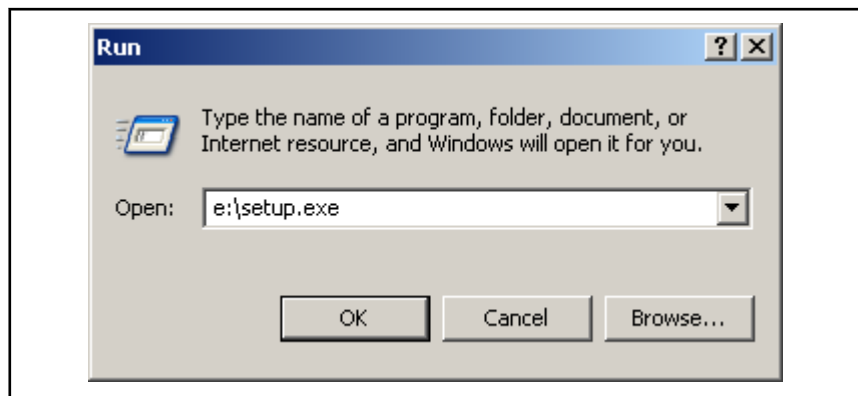


Fig. 4-1: Dialog: Run (Start Setup.exe)

Click **OK** or confirm with <Enter>

Another option is to click on the DVD drive from Windows Explorer and double-click on the "setup.exe" file to run it:

Name	Size	Type	Date Modified
AddComponents		File Folder	10/16/2007 6:21 AM
IndraLogic		File Folder	10/16/2007 6:21 AM
Redist		File Folder	10/16/2007 6:21 AM
WinStudio		File Folder	10/16/2007 6:22 AM
Autorun.inf	1 KB	Setup Information	10/12/2007 8:41 AM
CompVersion.xml	13 KB	XML Document	10/12/2007 8:02 AM
Data1.cab	8,321 KB	Cabinet File	10/12/2007 8:57 AM
Data2.cab	7,503 KB	Cabinet File	10/12/2007 8:57 AM
Data3.cab	1,289 KB	Cabinet File	10/12/2007 8:57 AM
Data4.cab	11,549 KB	Cabinet File	10/12/2007 8:57 AM
Data5.cab	16,373 KB	Cabinet File	10/12/2007 8:57 AM
Data6.cab	11,654 KB	Cabinet File	10/12/2007 8:57 AM
Data7.cab	2,547 KB	Cabinet File	10/12/2007 8:57 AM
Data8.cab	4,632 KB	Cabinet File	10/12/2007 8:57 AM
Data9.cab	2,538 KB	Cabinet File	10/12/2007 8:57 AM
Data10.cab	577 KB	Cabinet File	10/12/2007 8:57 AM
Data11.cab	4 KB	Cabinet File	10/12/2007 8:57 AM
Data12.cab	5,105 KB	Cabinet File	10/12/2007 8:57 AM
Data13.cab	36,098 KB	Cabinet File	10/12/2007 8:57 AM
Data14.cab	6 KB	Cabinet File	10/12/2007 8:57 AM
Data15.cab	11,145 KB	Cabinet File	10/12/2007 8:57 AM
Data16.cab	69,663 KB	Cabinet File	10/12/2007 8:58 AM
IndraWorks.msi	9,692 KB	Windows Installer P...	10/12/2007 8:59 AM
LicenceCode.bin	1 KB	BIN File	9/30/2007 10:21 PM
Liesmich.rtf	1 KB	Rich Text Document	3/28/2007 3:37 AM
setup.bin	10 KB	BIN File	9/20/2007 12:56 AM
setup.exe	873 KB	Application	9/18/2007 4:29 AM
Setup.ini	11 KB	Configuration Settings	10/15/2007 4:33 AM

Fig. 4-2: Listed DVD content with setup.exe selection

Start the installation wizard with <Enter> or double-click.

4. Select the installation program language.

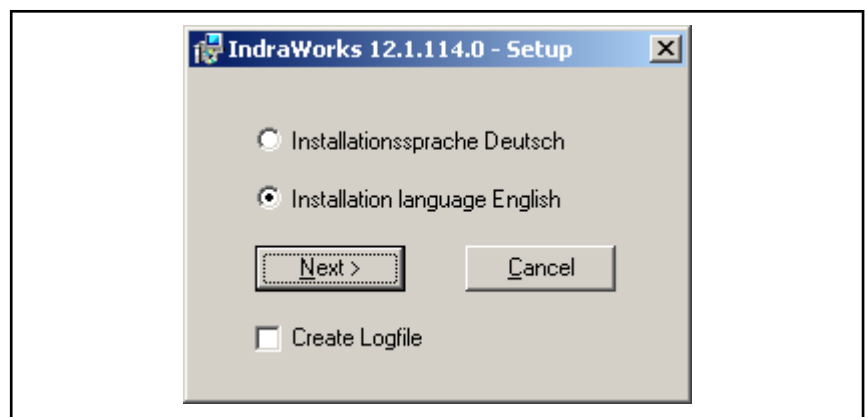


Fig. 4-3: Dialog: IndraWorks Setup (language selection)

Generate log file: Tick the box and an installation log file is created. The file can be found in the %temp% directory. The name is structured as follows: IndraWorks_Version_Action.log

Example: IndraWorks_1x.x.xx.x_New.log

Other possible names for "_Action":

- _Repair
- _Update
- _Remove
- _Change

Basic operation of the installation program: Use **Next >** to go to the next dialog, **< Back** to return to the previous dialog.

5.



If a previous version is installed, an "Update" is offered for selection. If a different system installation of the same version is installed, the option "Repaired" is available. Click on **Advanced** to select a new or a change installation.

If there are several parallel versions on the computer, select new installation:

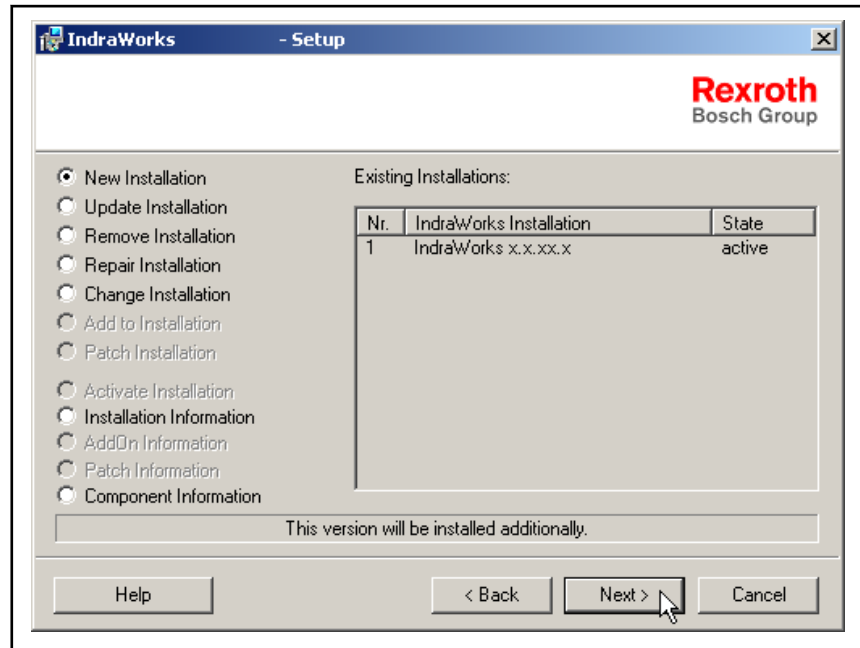


Fig. 4-4: Dialog: IndraWorks setup (new installation)



With a storage medium of a currently available version, existing installation can be repaired.



Please note that a maximum of 11 versions can be installed in case of a parallel installation.



The online help is displayed by clicking on **Help**, to display more information.



If the installation data carrier contains a patch, the patch is installed automatically after the basic installation has been completed. For more detailed information about the patch installation, refer to [chapter 4.5 "Patch installation" on page 25](#).

Proceed with the installation with **Next**:

6. Select the systems to be installed by ticking the checkbox at the start of the row.

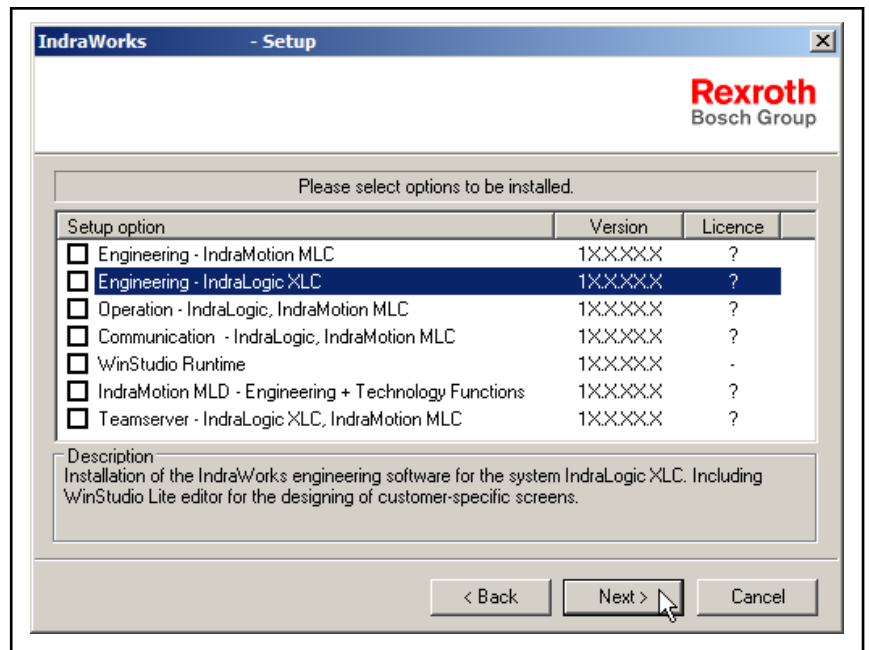


Fig. 4-5: Dialog: IndraWorks Setup (select the systems to be installed)

If a system that is subject to a license was selected, indicated by a question mark in the "License" column, the following dialog opens automatically to enter an activation code.

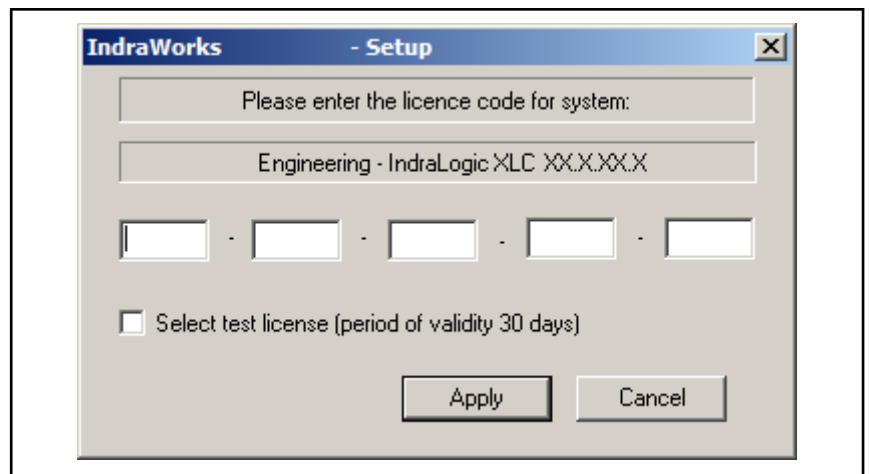


Fig. 4-6: Dialog: IndraWorks Setup (entering an activation code for the selected system)



A demo license can be activated to test the functionality during a trial period of 30 days. For more information about the demo license, please refer to chapter 4.4 [Demo license, page 23](#).

If the word **Valid** is displayed in place of the question mark when clicking on "Accept", the system activation code has been accepted.

The word "Demo" is displayed in the right column in case of an activated test license.

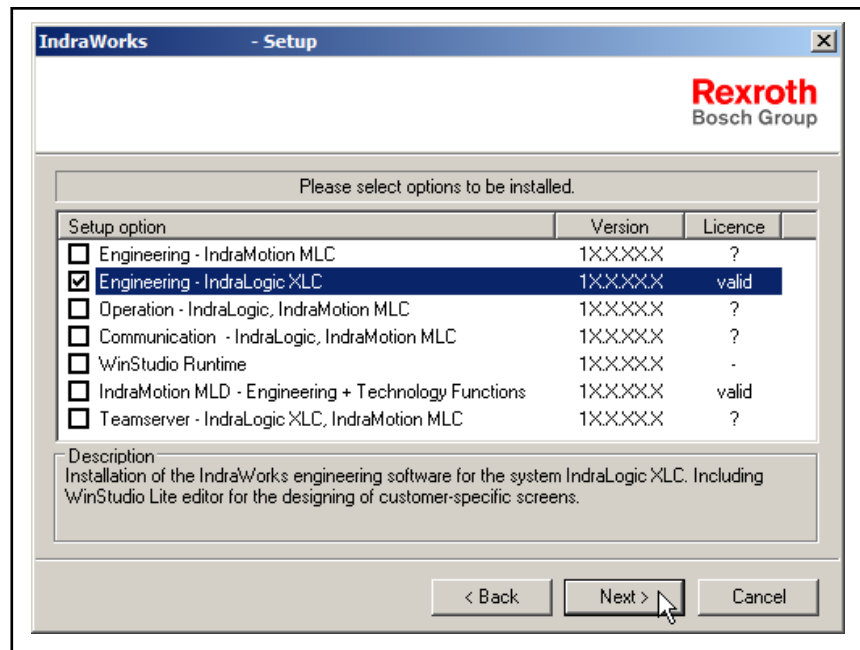


Fig. 4-7: Dialog: IndraWorks Setup (valid activation code entered)



More systems might be activated when entering the activation code. The installation is only executed if the box at the beginning of the row is ticked.

- Click on **Next >**, to display a list of tasks to be performed.

More interfaces are available:

- More options*
 - Online helps can be excluded from the installation. This option should only be selected if there might be insufficient memory space when installing the application. The required memory space is displayed for each option.



To postinstall the missing online help at a later point of time, refer to chapter 4.6 [Postinstalling online helps, page 28](#).

Installation name

- An installation name can be assigned that is displayed during the parallel installation.

Component info

- Detailed information about the software package to be installed is contained in the component info.

- Follow the installation steps.
- Please read the license conditions.

To accept the license conditions, select

- I accept the license conditions and confirm with **Finish**.

To accept the license conditions, select

- Cancel**
The installation is cancelled.

10. Enter the name and the company of the authorized user.
11. Select the drive and the target path where the user interface is to be installed.



The hard disk on a Bosch Rexroth industry PC is divided into two partitions (C: NTFS file system, D: The interface is installed on drive C:).

12. A message is displayed if there are release notes for the current version. Select **Show release notes**, click on **Next >** and the corresponding PDF document opens.
Read the release notes, close Acrobat Reader and follow the steps.
13. The import process is started using **Finish**.

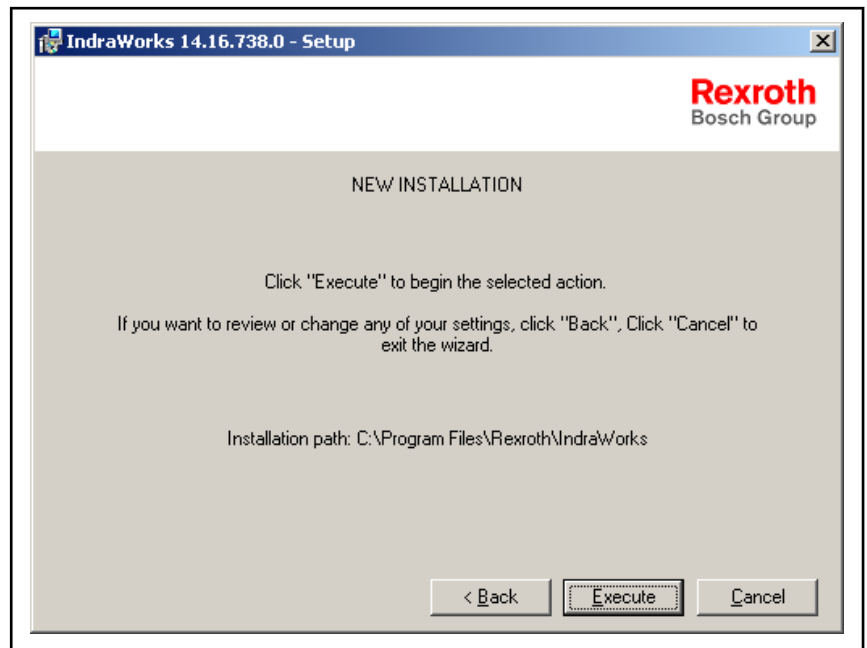


Fig. 4-8: Dialog: IndraWorks Setup (starting the installation)

14. Confirm the dialog displayed at the end of the installation with **Next >**.
Other options are:
 - UPDATE
 - CHANGE
 - REPAIR
15. Change DVD

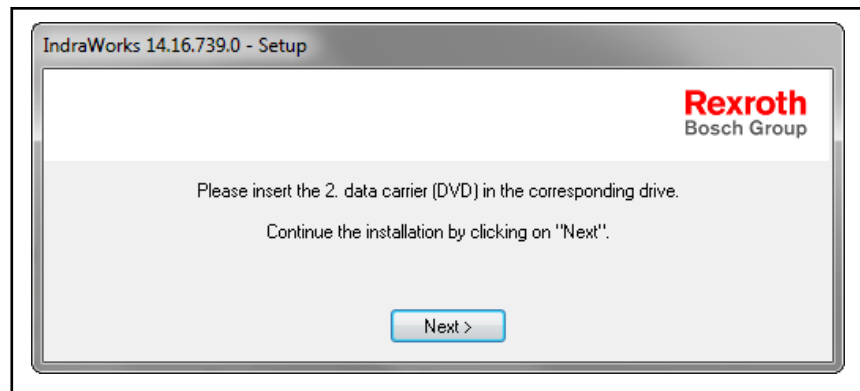


Fig. 4-9: Change DVD

16. Restart Windows.



Before working with the program, restart Windows or the computer.

The installation is now completed.

After restart, system files are updated and the necessary registrations are made.

4.3 Updating IndraWorks

4.3.1 DVD installation



Loss of user data!

Back up the user data **before** a software update.

1. To update IndraWorks, the storage medium matching your version is required.
2. Start the update by starting the program "Setup.exe", as described in chapter 4.2 [New or parallel installation of Rexroth IndraWorks](#), page 11.

Follow the installation until the following screen is displayed:

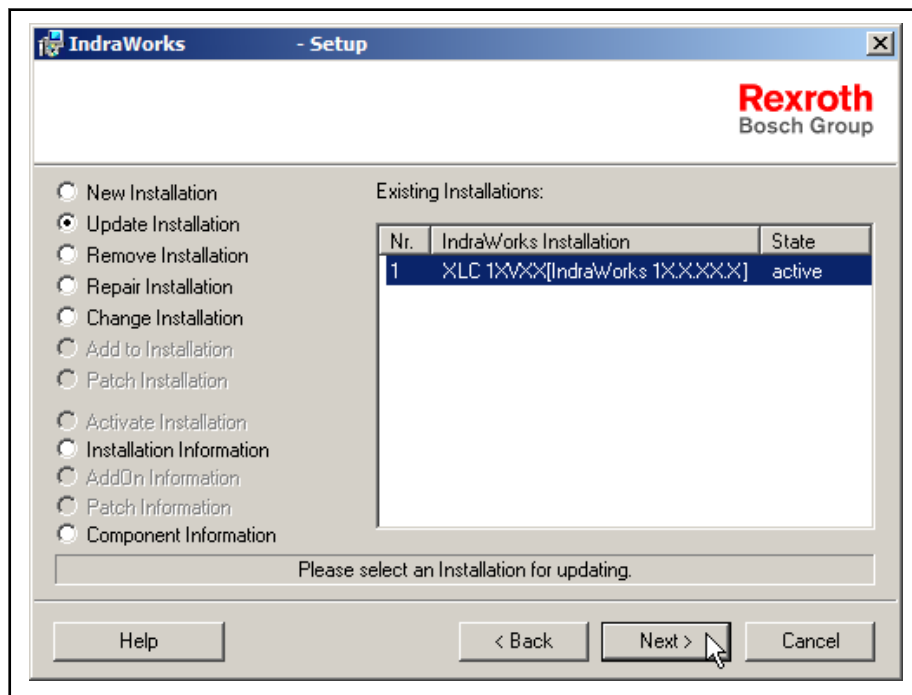



Fig. 4-10: Dialog: IndraWorks setup (update)


Select "Installation update" and proceed by clicking on **Next >**.

4.3.2 Updating embedded devices

 Embedded devices are only intended for the IndraWorks Operation installation.

An upgrade installation from version 13VRS to 14VRS of IndraWorks Operation on Win7 embedded devices VEPxx.5 and VEPxx.6 with an 8GB memory capacity is not possible without an uninstallation or reinstallation.

An upgrade is only possible using the workaround uninstallation or reinstallation.

 Prior to the reinstallation, ensure that sufficient memory space is available on C: 8GB available (if required, delete D: and expand C: via the Windows disk management).

Backup data contained on D:.

In case of devices with a partitioned memory capacity of 7GB/1GB, merge both partitions in a common partition:

- **System control ▶ Management ▶ Computer management ▶ Disk management**
Optionally: Right-click on **My Computer ▶ Manage ▶ Disk management**
- Disk 0 partition D: (W7App) **Right-click** "Delete Volume"
- Disk 0 partition C: (W7) **Right-click** "Extend Volume", select a free disk space (default)

If an upgrade is installed without an uninstallation, the following error message is output:

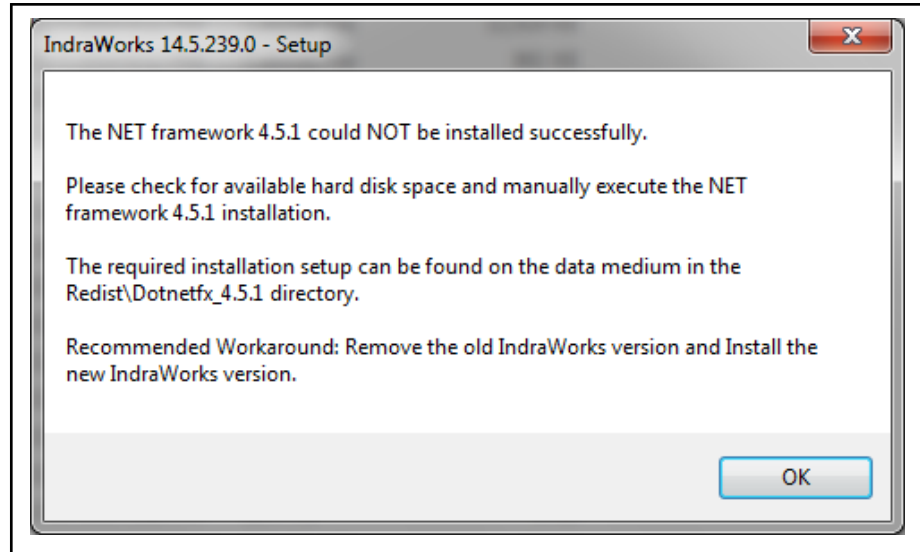


Fig. 4-11: Error message during update from 13VRS to 14VRS

4.3.3 Online help/Software update for IndraWorks

Using this function, software and online help updates can be downloaded and installed automatically online.

Procedure:

To update the software/online help, an online connection has to be established.

1. First check if an update for your system or an updated online help package is available. Only system-compatible installations are provided.

Click on: **Start ▶ All programs ▶ Rexroth ▶ IndraWorks... ▶ Search for updates ▶ Select possible options**



If no connection to the update servers is established, a message is displayed.



A message is also output if the latest update has already been installed.

2. If a system update is available, the system version with the file size is displayed:

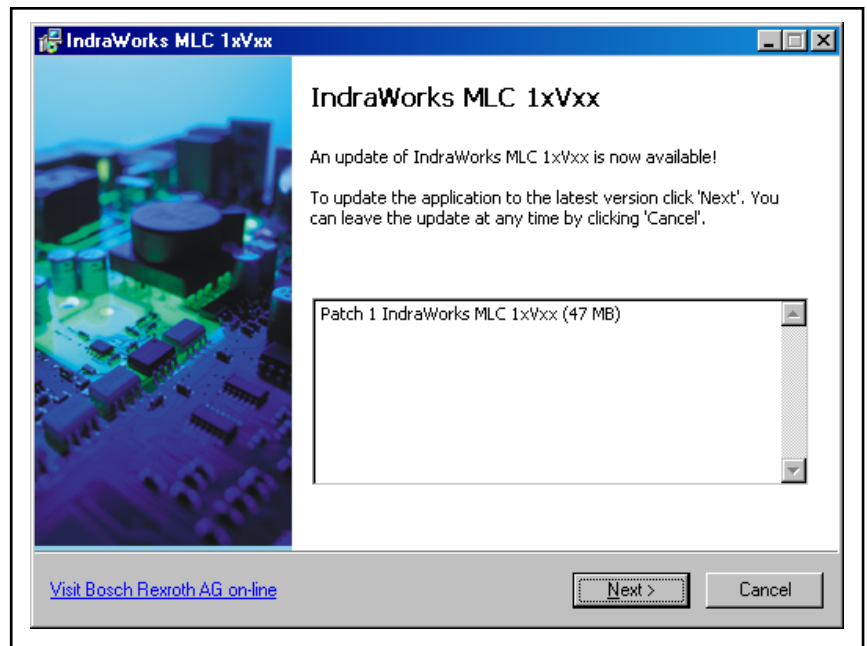


Fig. 4-12: Update available

Click on **Next >** to start the download to a temporary directory. A progress bar is displayed.

3. If all files are downloaded to the system, the user is prompted to close the application and to install the data in the target directory by clicking on **Finish**. A progress bar is displayed.

4.3.4 Software extension via AddOn

Another file type can be used in the installation program to extend IndraWorks: *.iwaddon

Files with this extension contain zipped information that can be extracted to the corresponding directory.

Double-click to open the file:

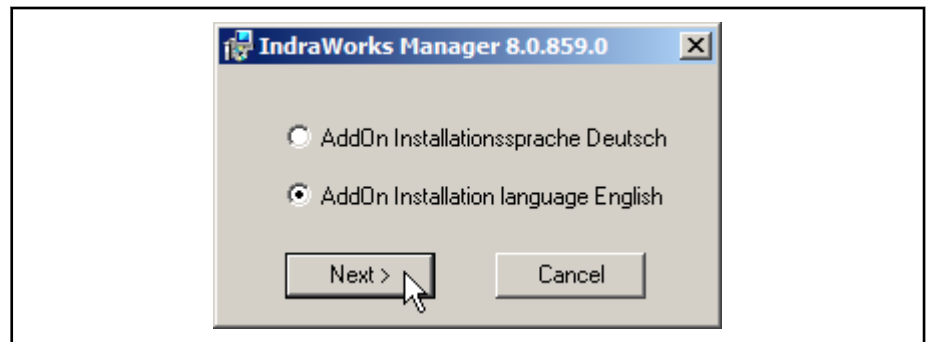


Fig. 4-13: Start the AddOn installation

Example An AddOn is provided in the following screenshot that contains help files for a certain MLC version in German.

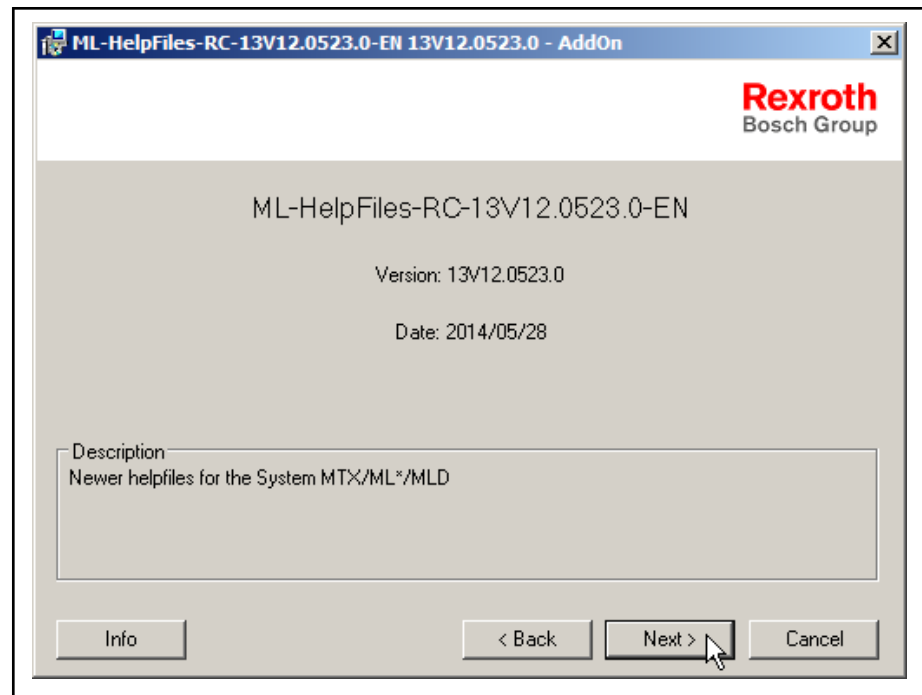


Fig. 4-14: Content description

Click on **Info** to display system information describing the system the AddOn is compatible with.

Click on next and complete the installation.

4.3.5 Silent installation

The silent installation is an option to update the CNC system MTX SWW (firmware subject to an export license). No user dialogs are displayed requiring manual user intervention is required.

Requirement: A "compatible" (i.e. identical version and release) installation of CNC system MTX in one of the following variants:

- Workstation
- Engineering
- Operation
- Communication
- Efficiency Workbench (ewb)

If more than one matching installation is found for the CNC system MTX, a selection dialog is displayed.

Start The installation is started in a DOS box:

```
Setup.exe /L0x0007 /silent=YES (progress par in German)
```

```
Setup.exe /L0x0009 /silent=YES (progress par in English)
```

All other switches are optional.

If only one matching CNC system MTX installation is found, an initial installation (if no SWW has been installed yet) or an update or repair installation (if an SWW has already been installed) is performed.

Separate several switches by spaces.

More switches /PCBootBox=3 (automatic reboot after a completed installation)

If the switch `/PCBootBox=` is missing or if a different value is entered, no reboot takes place after a completed installation.

`/Path=` installation directory of the MTX installation in which the SWW has to be installed or uninstalled.

Inverted commas are not permitted (even if the directory name contains spaces).

A back slash `"\"` can optionally be added.

If switch `/path=` missing:

- If no switch `/action=remove` and if only one compatible CNC system MTX is available, the SWW is updated or installed
- If several compatible CNC system MTX installations are found, an error message is output
- In case of an uninstallation (switch `/action=remove` see below), an error message is output

`/Action=Remove`

This switch is used to uninstall an SWW. The directory has to be specified via the `/Path` switch. The SWW identified by the installation directory is uninstalled.

Examples

```
Setup.exe /L0x0007 /silent=YES /PCBootBox=3 /Path="C:\Programs\Rexroth\MTX 14\"
```

The SWW is extracted in the `/Path=...` directory. Subsequently, the system is reboot. The progress bar during the installation is displayed in German.

```
Setup.exe /L0x0009 /silent=YES /Path="C:\Programs\Rexroth\MTX 14\" /Action=Remove
```

The SWW in the `/Path=...` directory is uninstalled without an subsequent reboot. The progress bar during the installation is displayed in English.

4.4 Demo license

4.4.1 General information

The IndraWorks installation program offers the possibility to install systems requiring a license even if the user does not have the required Bosch Rexroth software licenses.

Please tick the **Demo license** check box during the installation. The demo license is valid for 30 days and allows for an unlimited use of IndraWorks.

The use of a demo license is indicated by the text `<TEST LICENSE ACTIVE! >` in IndraWorks Engineering. A reminder screen is displayed in IndraWorks Operation in intervals.

4.4.2 Start behavior of IndraWorks with demo license

The following dialog is displayed upon each IndraWorks Engineering or IndraWorks Operation desktop start, if the demo license has been activated during the installation and the trial period of 30 has not yet expired:

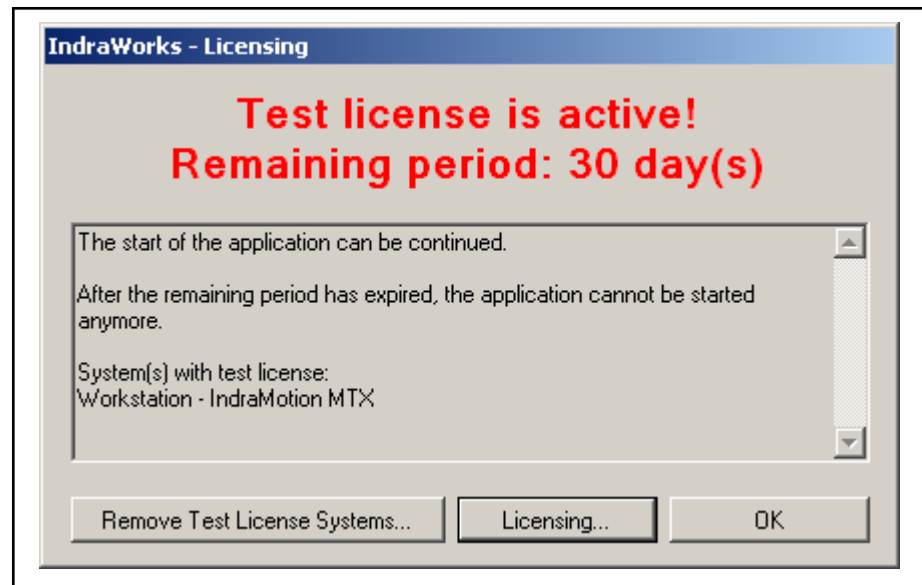


Fig. 4-15: Dialog: IndraWorks - Licensing

The dialog automatically closes after 20 seconds upon the start of the IndraWorks Operation desktop without operator control action. Starting the application is continued.

The remaining trial period of the demo license is displayed. Via **Licensing...**, the license status of the systems requiring a license can be changed by entering a valid activation key.

If the remaining trial period has expired when starting IndraWorks Engineering or IndraWorks Operation, the following dialog is displayed:

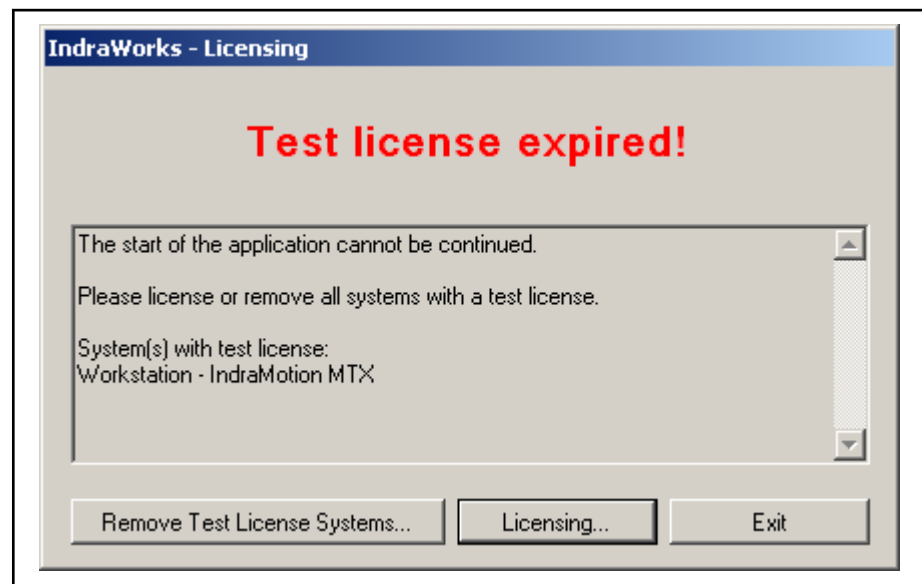


Fig. 4-16: Dialog: IndraWorks - Licensing

From this point, the dialog is not automatically closed anymore after 20 seconds when starting IndraWorks Operation.

In this dialog, a list with systems possessing a demo license is displayed.

Available options:

- **Remove systems with demo license.**

Subsequently, editing can be continued but without the functionality of the demo license.

- Click on **Licensing** and enter the license key. Editing can be continued.
- Select **Exit** and exit IndraWorks.

The application start can only be continued if all license keys for systems requiring a demo license have been entered and the demo license has been deactivated. Systems that are not licensed have to be uninstalled to start IndraWorks Engineering or IndraWorks Operation.



Changing the license status by entering the activation keys is generally only possible if IndraWorks is run with administrator rights.

4.4.3 Reminder dialog in IndraWorks operation

The following dialog is displayed in intervals in case of an activated demo license:

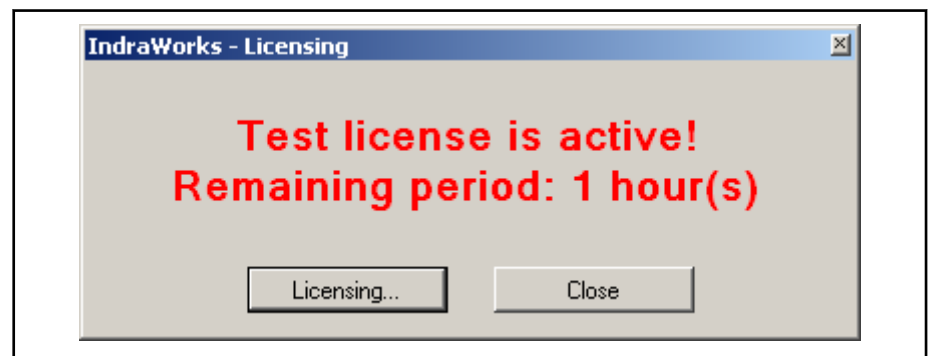


Fig. 4-17: Dialog: IndraWorks - Licensing

The waiting time until the dialog is displayed decreases with a decreasing trial period of the demo license. IndraWorks Operation cannot be restarted again after the remaining trial period has been expired. Therefore, new Bosch Rexroth software licenses should be acquired as soon as possible. Once the licenses are available, click on **Licensing...** to adjust the license status of the installed systems.

4.5 Patch installation

4.5.1 General information

By means of the IndraWorks installation program, software updates, so-called patches, can be installed during the IndraWorks installation.

4.5.2 Wizard controlled patch installation

Source of data:

- A data carrier, containing the basic installation and the patch
- Search update online, see [chapter 4.3.3 "Online help/Software update for IndraWorks" on page 20](#)

After "Setup.exe" has been started and the installation language has been selected, it is checked for an installed systems. The version is compared to the data carrier version.



If no system has been installed yet, the window on the right side is empty and if the data carrier contains the required basic installation, the menu item "New Installation" is offered for selection in the following dialog.

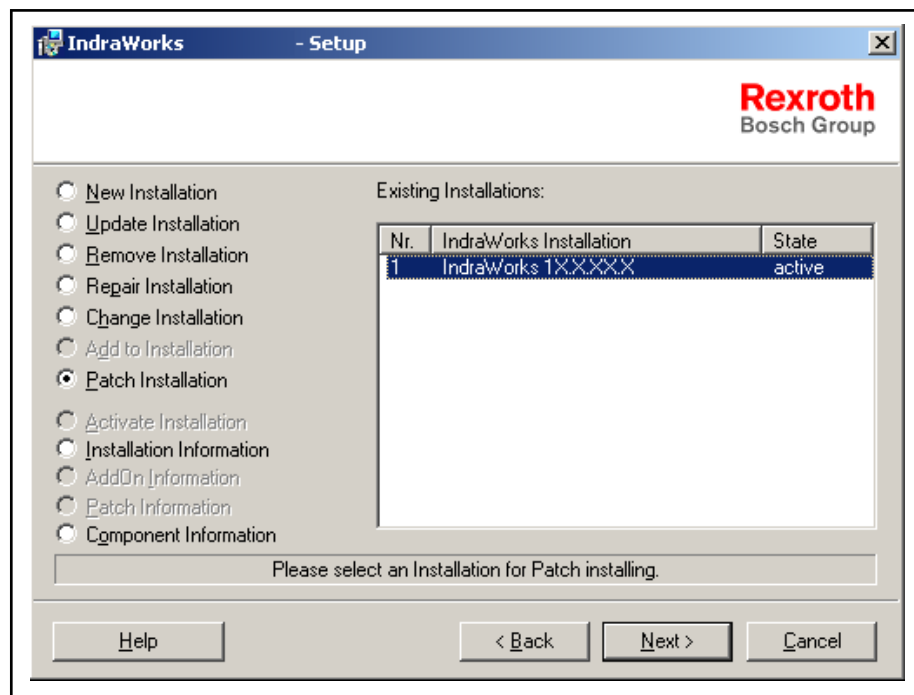


Fig. 4-18: Selecting the patch installation

In the right dialog window, all systems that can be used with the patch are displayed. Thus, it is ensured that the patch contained on the data carrier matches the basic version of your system.



If no basic version is available, only "updating an installation" or a "reinstallation" is possible. The patch contained on the data carrier is automatically installed.



Bosch Rexroth recommends the wizard controlled patch installation due to a safe operation.

4.5.3 Manually installing a patch

If only the patch is available, start the file with extension "*.iwpatch". Start requirement: an already installed IndraWorks version.

Select the language in the first dialog:

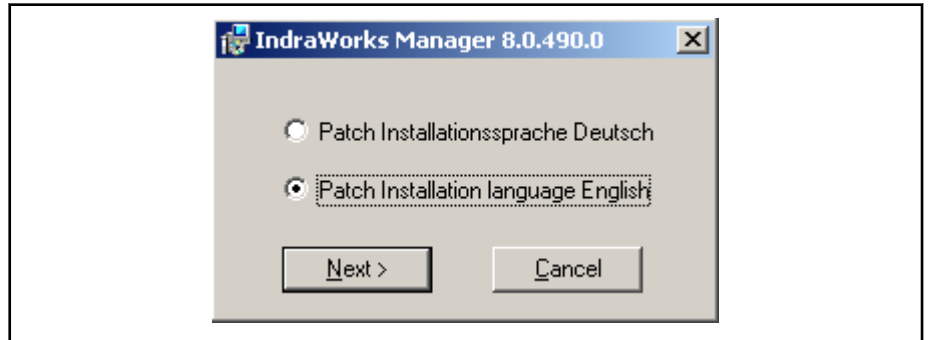


Fig. 4-19: IndraWorks Suite (language selection)

Follow the installation:

1. Subsequently, the patch information is displayed.



Important note: the basic version that is to be used with the patch should already be installed.

2. All patch-compatible versions are displayed (usually only a single version).



If the basic version to be used with the patch does not comply with any of your system versions, an installation is not possible. In this case, the patch cannot be installed.

3. A summary of all tasks to be carried out prior to the installation is displayed.

Click on **Install** to start the patch installation.

4.5.4 Installation information

Additionally, the IndraWorks installation program offers the possibility to display information about your installation. The selection dialog can be accessed by clicking on **Start ▶ Programs ▶ Rexroth ▶ Tools ▶ IndraWorks Manager**. The user can select "Installation information" and the corresponding information is displayed.

The information comprises

- exact version
- installation path
- installed systems
- installed patches
- remaining trial period of test license

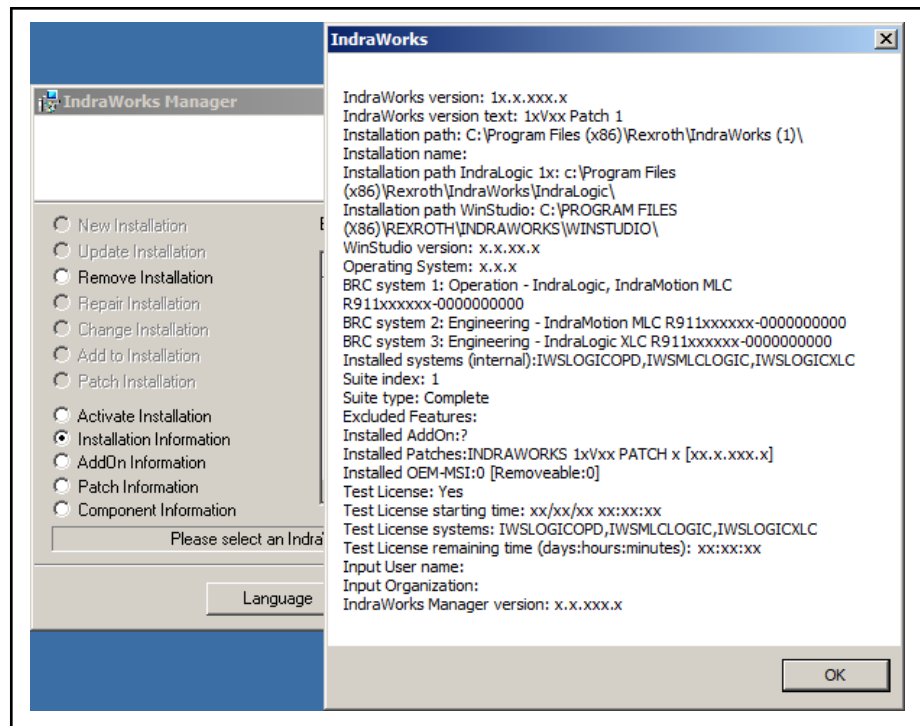


Fig. 4-20: Information about the installation

Patch information available in the installation can also be displayed.

1. Start the IndraWorks Manager, as explained.
2. Select "Patch Information" and click on **Next >**.
3. Select the patch you want to get information on.

Click on **Next >** for further information on the selected patch.

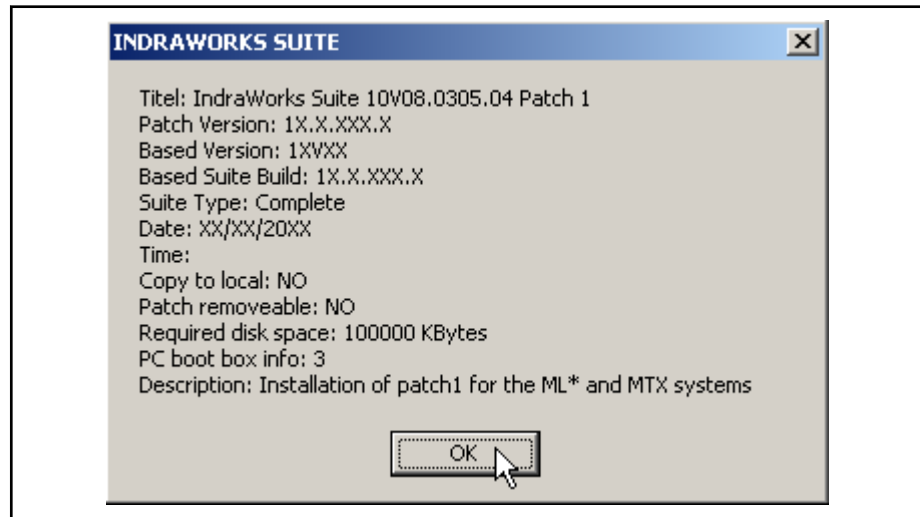


Fig. 4-21: Patch information

4.6 Postinstalling online helps



This chapter assumes an existing IndraWorks installation. Missing online helps can only be postinstalled for this software version

To post-install the IndraWorks online help, the storage medium matching your version is required.

1. Start the "Setup.exe" program, select the language and click on **Next >**.

The following dialog is displayed:

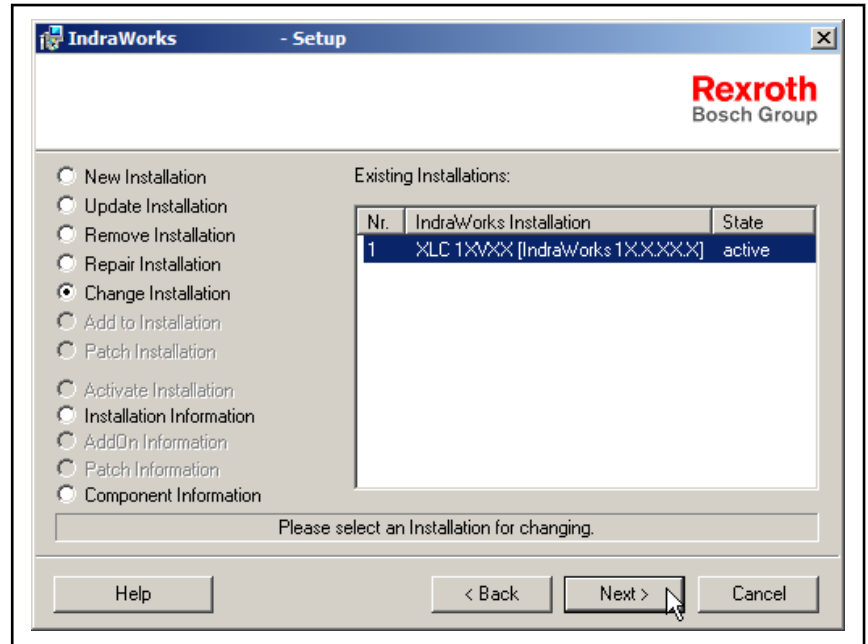


Fig. 4-22: Dialog: IndraWorks setup (changing an installation)

2. Select "Changing an installation" and click on **Next >**. All installed systems are displayed.
3. Click on **Next >**, to display a list of tasks to be performed.
4. Select **More options**.

The current help files are displayed:

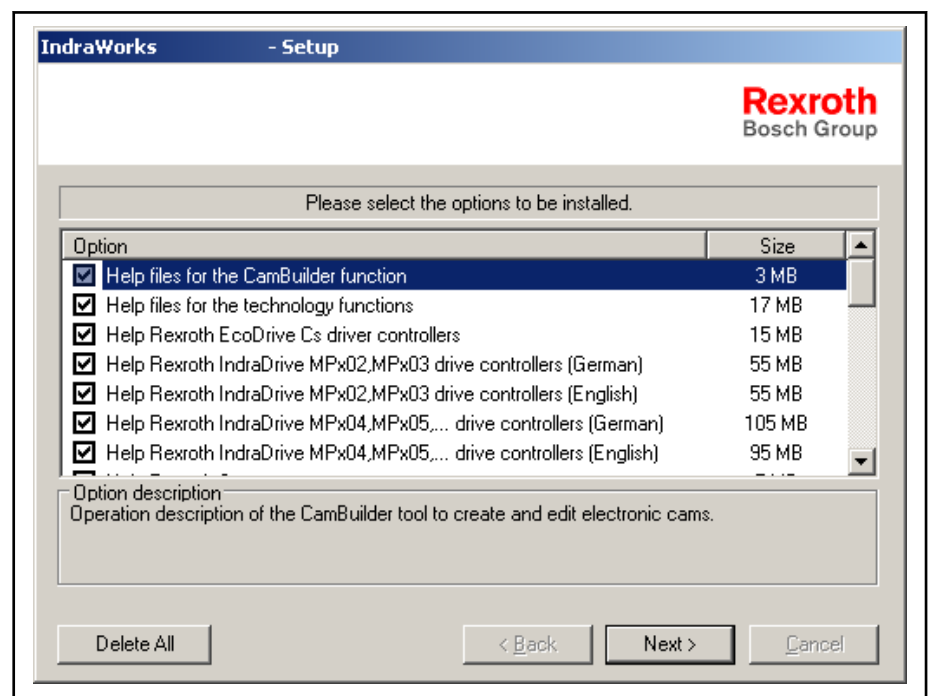


Fig. 4-23: IndraWorks setup (selecting the options)

To enable the installation of non-installed help files, tick the box at the start of the line.

Proceed with the installation by clicking on **Next >**.

4.7 Uninstalling Rexroth IndraWorks

Uninstalling for parallel installations

If several versions of the software are installed, the setup can also be used to uninstall the versions. After starting the setup (see [4.2.3 Installing Rexroth IndraWorks on page 12](#)), the drop-down list is displayed.

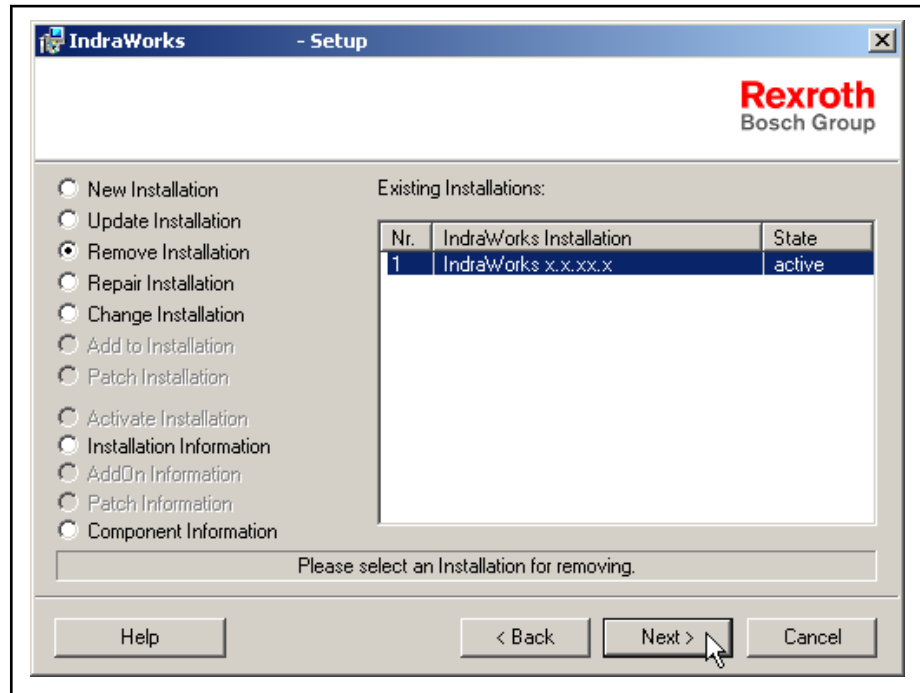


Fig. 4-24: Dialog: IndraWorks Setup (removing an installation)

1. Select the version to be removed from the list.
2. Select "Remove installation".
3. Click on **Next >** to continue to uninstallation.

Uninstalling using the operating system

Uninstalling Rexroth IndraWorks is executed via the operating system (click on Windows 11: **Start menu ► Settings ► Apps ► Apps and Features**) Click on "IndraWorks" as the program to be removed and select **Uninstall**. Follow the on-screen instructions to complete the uninstallation. The installation DVD is not required to uninstall IndraWorks. After uninstalling, you can view the log file.



Loss of user data!

⇒ Ensure that you save the user data before uninstalling the software if you want to keep them.

5 MLPI SDK installation

A software development package is provided in the MLPI-SDK (Motion Logic Programming Interface - Software Development Kit) to integrate and use high level languages (C/C++/VBA/Java/LabVIEW).

By means of the software development package, the MLPI interface can be connected to the XLC/MLC control systems.

The MLPI-SDK provides API functions via libraries. By means of these functions, control properties, parameters, the PLC application, I/Os and variables as well as single axis and multi-axis functionality can be accessed.

The installation is contained on the ML storage medium in the "Disc1\AddOns \MLC\MLPI" directory. The installation is a customizable SDK and is not automatically offered for installation as additional installation.

Installation steps:

1. Navigate to the specified directory to "Setup.exe" and start the program.

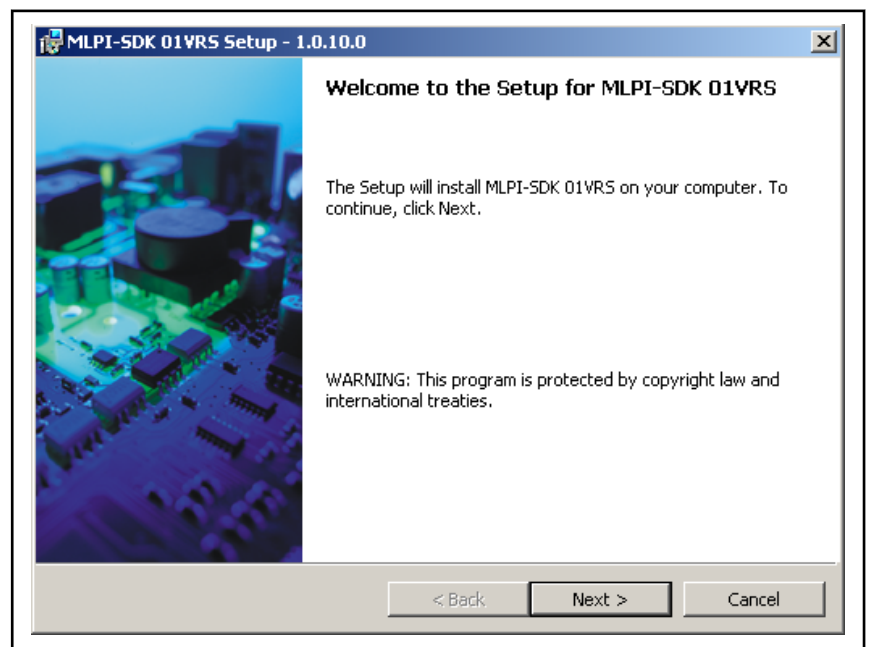


Fig. 5-1: Dialog: Start the MLPI installation

Basic operation of the installation program: Press **Next >** to open the next dialog. **< Back** takes the user back to the previous dialog.

2. Please read the license conditions.

To accept the license conditions, select

- I accept the license conditions and confirm by clicking on **Finish**.

If you do not accept the license conditions, select

- **Cancel**

The installation is cancelled.

3. Enter the user information.
4. Select the directory in which the program is to be installed.
5. By clicking on **Install**, the installation is started.
6. By clicking on **Finish**, the installation is completed.

MLPI SDK installation

The following is displayed in the start menu:

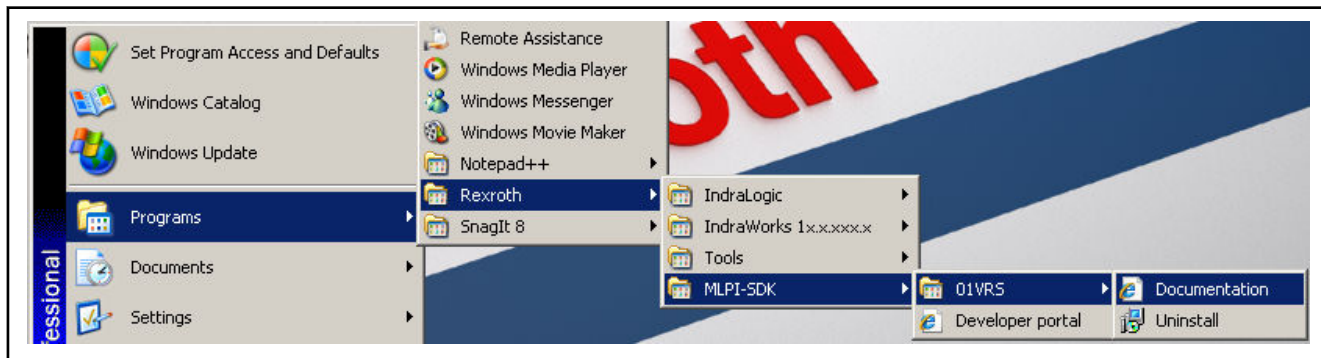


Fig. 5-2: Start menu

To use the generated start menu entry "Developer Portal", an internet connection is required.

6 Licensing IndraWorks components

6.1 General Information

The licenses of IndraWorks software components are managed using the option dialog . Open the option dialog using **Tools ▶ Options** and select the page "Software Licenses" under "General".

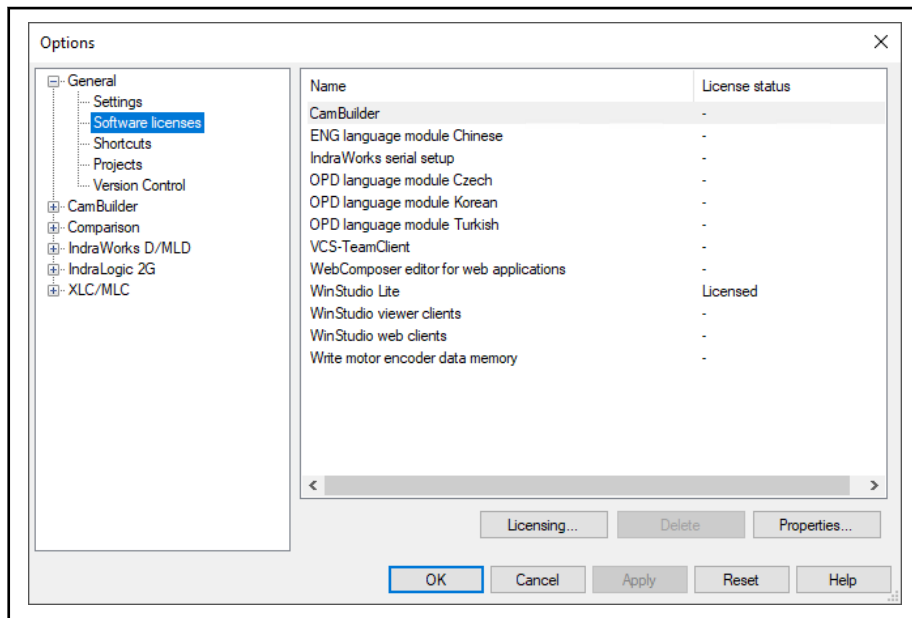


Fig. 6-1: "Options" dialog (licensing)

The page shows all available software components subject to licenses, including their license status. The extent of the entries depends on the system installed.

License status	Description
-	No license has been installed on the computer. The component cannot be used.
Licensed	A full license has been installed on the computer. The component can be used without limitations.
30 days test license	A temporary test license has been installed on the computer. The component may be used for evaluation purposes within the specified number of days (30 days at a maximum).

Tab. 6-1: License status

A license description is shown if the mouse cursor is pointing above the corresponding list entry.

6.2 Installing a License

1. In order to license a software component, select the corresponding component from the list and confirm with "Licensing...".



" Licensing..." is deactivated if a full license already has been installed.

Fig. 6-2: "IndraWorks setup" dialog (specify license type)

2. To activate a full license, proceed to step 4.
3. The selected software components can be tested for 30 days with a test license.



If "test license" is deactivated, either a demo license has already been installed or the selected component does not support test licenses.

Select **Apply** and proceed to step 5.

4. Enter the activation key to install a full license. The required data has been received when purchasing the license.
The license can be installed on a dongle instead of a PC by selecting the option "Save on Dongle".



The option "Save on Dongle" is only available if the license supports this option and a dongle is available.

Select **Apply**.

5. Please read the license conditions.
 - To accept the license conditions, select*
 - I accept the license conditions and confirm with **Finish**.
 - To accept the license conditions, select*
 - **Cancel**
The license is not activated.

6.3 Removing a License

In order to remove a license select the corresponding license from the list and confirm with "Remove".

Confirm the safety prompt with "Yes".

6.4 Show License Properties

In order to display the properties of a software component subject to license conditions select it from the list and confirm with "Properties...".

The properties dialog displays a short description of the software components, as well as the parts number and the serial number of the license.

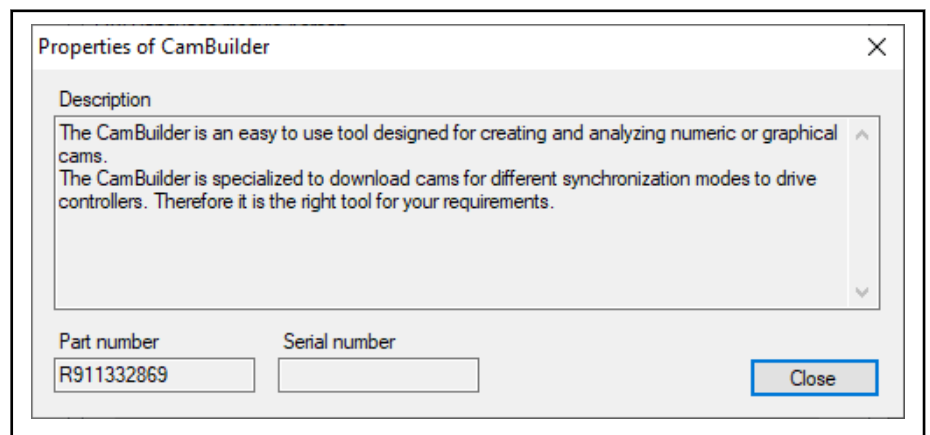


Fig. 6-3: "CamBuilder properties" dialog

7 More information

7.1 Version display

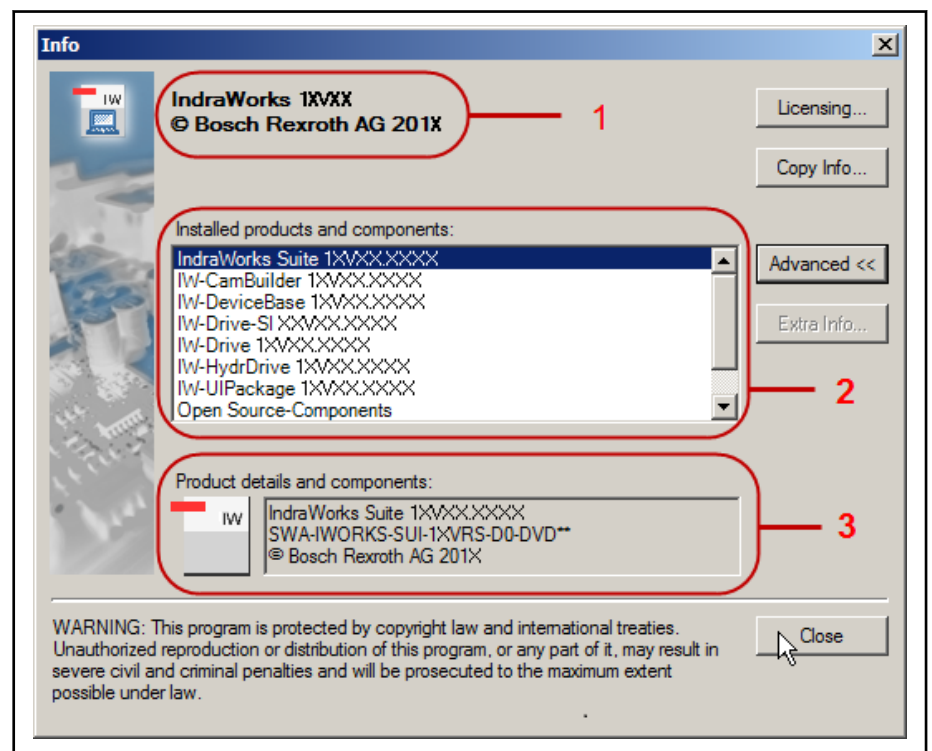
7.1.1 Calling the version display

The version display (also info dialog) displays information on the currently installed software version.

The info dialog can be called only if the tool bar is active. The toolbar is activated/deactivated via <ALT+M>. You get the version display in case of an active toolbar via **Help ▶ Info....**

7.1.2 Showing the version display

Information on the installed systems of the interface is displayed when opening the info dialog.



- 1 Suite version of the interface
- 2 Installed systems
- 3 Version information on the system or component selected under 2

Fig. 7-1: Dialog: Info (with display of the installed systems)

The **Advanced>>** button is additionally used to display the components (in field "2") of the installed interface and their version information.

Click on **Licensing** to see the licenses of the installed products. A license code can be entered to enable a test license.

Press **Copy Info** to read the information from all installed files and to copy this to the notepad. Subsequently, this information can be saved to a any file. **Copy Info** is used for support if problems occur in the interface.



The "Copy Info" procedure may take several minutes (depending on the installed systems). During this time, it is not possible to cancel the copying process or to work elsewhere.

Extra Info is not enabled for every entry in field "2". "Extra Info" can be used to provide additional information on a system or a component.

7.2 Protection from access by third party PCs, protection against viruses

7.2.1 Operating virus scanners in connection with Bosch Rexroth control systems

General information



Only skilled personnel is permitted to make changes.

In general, virus scanners can be certified to be compatible with Bosch Rexroth control systems. In tests using virus scanners, no side effects on the functions of the systems could be determined. This only applies if the recommendations by Bosch Rexroth regarding the configuration have been complied with. Refer to [chapter "Recommendations for configuring the virus scanner software" on page 38](#).



Before being released, the interface software is tested in conjunction with a current virus scanner. However, it is not possible to test every virus scanner available on the market. The use of later versions as well as of new virus definition files lies within the responsibility of the operator. In addition, the operator should test the compatibility of newer versions before they are widely distributed within the company.

During the installation, different scripts are processed that detect some virus scanners as malicious software and report an error message.



It is recommended to disable the virus scanner during the installation.

System performance

Using virus scanner software to scan files/directories necessarily leads to drops in performance; depending on the configuration of the virus scanner, these drops can be significant. Therefore, it is strongly recommended to comply with Bosch Rexroth recommendations for configuring a virus scanner.

Recommendations for configuring the virus scanner software

Manual Scans

No settings have to be selected according to Bosch Rexroth. The end user can select the folder required for the scan according to his requirements.

If possible, a manual scan should check all the data on the hard disk. If the interface is to be used during a manual scan, significant decreases in performance can occur. If possible, carry out manual scans at times when the PC is switched on but not in use.

Realtime Scans

The settings described below are strongly recommended for error-free and secure operation of Bosch Rexroth products with as few performance drops as possible.

Set **File Scan** to "modified (scan on create)" if the virus scanner provides this function ("Incoming" for TrendMicro). This setting permits the best performance for the system.

File/folder exclusions Certain virus scanners allow to exclude files/directories from a real-time scan in order to increase the performance.

Bosch Rexroth directories to which this can be applied:

- "C:\Program Files\Rexroth" (Bosch Rexroth installation directory)
- "C:\Program Files\Shared Files\Rexroth" (Bosch Rexroth shared directory)
- IndraWorks project directories
- Drives mounted on the local hard disk

Startup Scans

It is recommended that no startup scans are executed. The disadvantage is that they are activated each time the operator panel is started and when a different user logs in; depending on the directories selected for scanning, this can slow down operation noticeably.

Scheduled Scans

Bosch Rexroth recommends using scheduled scans. However, their use and application interval depend on the production process. It is recommended that the scans are carried out during breaks or during change of shifts. The data included in the scanning procedure are to be divided so that the entire hard disk can be scanned within a week. This minimizes the times for individual scans.

More Settings:

- Software settings permitting, "CPU Utilization" should be set to "Low" in order to ensure that the virus scanner has as little influence on Bosch Rexroth applications as possible in terms of performance.
- It can happen that the virus scanner generates many entries in the event log if, for example, access to files is prevented during scans. Therefore, it is recommended that "Overwrite events (if required)" is selected for the "Application log" (under "Log settings") to continue logging in the event display of the operating system.

8 Service and support

Our worldwide service network provides an optimized and efficient support. Our experts offer you advice and assistance should you have any queries. You can contact us **24/7**.

Service Germany Our technology-oriented Competence Center in Lohr, Germany, is responsible for all your service-related queries for electric drive and controls.

Contact the **Service Hotline** and **Service Helpdesk** under:

Phone:	+49 9352 40 5060
Fax:	+49 9352 18 4941
E-mail:	service.svc@boschrexroth.de
Internet:	http://www.boschrexroth.com

Additional information on service, repair (e.g. delivery addresses) and training can be found on our internet sites.

Service worldwide Outside Germany, please contact your local service office first. For hotline numbers, refer to the sales office addresses on the internet.

Preparing information To be able to help you more quickly and efficiently, please have the following information ready:

- Detailed description of malfunction and circumstances
- Type plate specifications of the affected products, in particular type codes and serial numbers
- Your contact data (phone and fax number as well as your e-mail address)

Index

A	
About this documentation.....	1
Information representation.....	4
Validity of the documentation.....	1
ANSI Z535.6-2006.....	4
C	
Complaints.....	6
Criticism.....	6
Customer Feedback.....	6
D	
Demo license.....	23
General information.....	23
Reminder dialog in IndraWorks Operation.....	25
Start behavior of IndraWorks with demo license.....	23
Documentation	
Revision history.....	1
F	
Feedback.....	6
Firewall setting.....	11
G	
General information about the installation	
Pre-installed user interface.....	9
General information on the installation.....	9
Installation Program and this documenta- tion.....	9
System requirements.....	9
H	
Hard disk installation.....	11
Hazard warnings.....	4
Helpdesk.....	41
Hotline.....	41
I	
IndraControl L45.....	10
IndraControl L65.....	10
IndraControl L85.....	10
IndraLogic XLC / IndraMotion MLC.....	10
Information representation	
Names and Abbreviations.....	6
Installation	
Demo license.....	23
Patch installation.....	25
Installing IndraWorks Engineering on PCs of a third party manufacturer	
Hardware requirements for IndraWorks Engineering.....	9
Hardware requirements for Rexroth IndraWorks CamBuilder.....	10
Hardware requirements for Rexroth IndraWorks D and IndraMotion MLD.....	10
Hardware requirements for Rexroth IndraWorks Simulation.....	10
Intended use	
Introduction.....	7
L	
Licensing IndraWorks components.....	33
Demo license.....	23
General information.....	33
Installing a license.....	33
License properties.....	35
Removing a license.....	35
M	
MLPI SDK Installation.....	31
More information.....	37
Version display.....	37
Virus scanner.....	38
MTX	
advanced, IndraControl L85.....	10
performance, IndraControl L65.....	10
standard, IndraControl L45.....	10
N	
New or parallel installation of Rexroth IndraWorks	
DVD installation.....	12
General information.....	11
Hard disk installation.....	11
O	
Operating systems.....	10
P	
Patch installation	
General information.....	25
Installation information.....	27
Manually installing a patch.....	26
Wizard controlled patch installation.....	25
Performing an installation.....	11
General information.....	11
Performing the installation	
New or parallel installation of Rexroth IndraWorks.....	11
Postinstalling online helps.....	28
Uninstalling Rexroth IndraWorks.....	30
Updating IndraWorks.....	18
R	
Recommendations for configuring the virus scanner software	
Manual scans.....	38
More settings.....	39

Notes

Bosch Rexroth AG

Bgm.-Dr.-Nebel-Str. 2

97816 Lohr a.Main

Germany

Tel. +49 9352 18 0

Fax +49 9352 18 8400

www.boschrexroth.com/electrics



R911344286