

IndraControl

VDP xx.3 – Operator display

Product Change Notification (PCN)

Commissioning Manual

R911370537
Edition 02

1 Purpose

This "product change notification" is used to inform on current embedded terminal changes. If you have any questions on the PCN, please contact the Bosch Rexroth service team:

Phone: +49 9352 40 5060
 Fax: +49 9352 18 4941
 Email: service.svc@boschrexroth.de
 Internet: <http://www.boschrexroth.com/>

Customer Feedback

Customer requests, comments or suggestions for improvement are of great importance to us. Please email your feedback on the documentations to Feedback.Documentation@boschrexroth.de. Directly insert comments in the electronic PDF document and send the PDF file to Bosch Rexroth.

2 Product change notification (PCN), 2015-10, software update "IPC maintenance 1.0.0.26"

2.1 General information

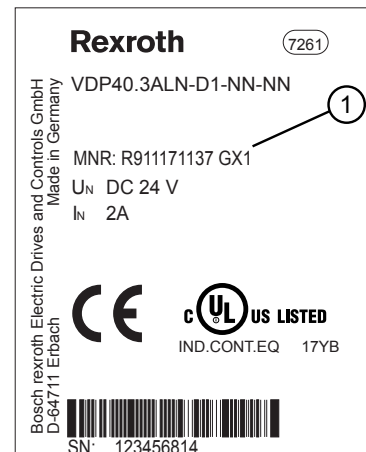
The touchscreen calibration does not have any function for certain operator terminal of the VDP16.3, VDP40.3, VDP60.3, VDP90.3 and VDP92.3 series. This description lists all affected products, how to obtain the software update and how to implement it.

2.2 Requirements

To load the software update, a certain hardware/firmware combination is required.

2.2.1 Hardware

The affected displays are listed in the following table. For the specifications, refer to the type plate of the device.



① Release
 Exemplary type plate

| Type code | Part number | Release |
|------------------------|-------------|--------------|
| VDP16.3DBN-D1-NN-NN | R911171013 | GV or higher |
| VDP16.3BKN-D1-NN-NN | R911171014 | GZ or higher |
| VDP16.3AKN-D1-NN-NN | R911171015 | HA or higher |
| VDP40.3DEN-D1-NN-NN | R911171016 | GX or higher |
| VDP40.3BIN-D1-NN-NN | R911171017 | GW or higher |
| VDP40.3DFN-D1-NN-NN | R911171018 | GY or higher |
| VDP40.3DIN-D1-NN-CG | R911171059 | GZ or higher |
| VDP40.3ALN-D1-NN-NN | R911171137 | GW or higher |
| VDP40.3DGN-D1-NN-NN | R911171138 | GQ or higher |
| VDP92.3DEN-D1-NN-S1 | R911171408 | GW or higher |
| VDP16.3BKN-D1-NN-MX | R911171443 | GY or higher |
| VDP40.3BIN-D1-NN-MX | R911171444 | GV or higher |
| VDP40.3DFN-D1-NN-MX | R911171445 | GW or higher |
| VDP60.3FEN-D1-NN-NN | R911171737 | AZ or higher |
| VDP40.3DFN-D1-NN-CG | R911172554 | AO or higher |
| VDP60.3FEN-D1-NN-C1 | R911172754 | AM or higher |
| VDP60.3ARN-D1-NN-NN | R911172914 | AJ or higher |
| VDP16.3AKN-D1-NN-NN-01 | R911173920 | AA or higher |
| VDP40.3ALN-D1-NN-NN-01 | R911173921 | AA or higher |
| VDP60.3ARN-D1-NN-NN-01 | R911173922 | AA or higher |

Affected VDP variants

2.2.2 Firmware

Load the software update on the control cabinet PC to which the display (VDP) is connected to.

Control cabinet PCs equipped with a firmware image later than December 2014 do not require a software update.



The "IPC Maintenance 1.0.0.26 Update" was created and tested for the affected firmware. Update requirement: The firmware identification implemented by Rexroth is available without modifications.

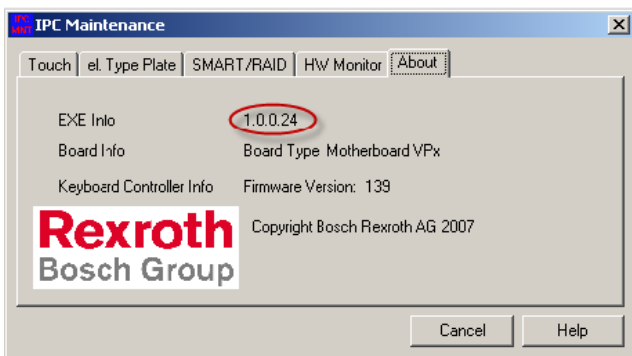
- ▶ Windows XP: Firmware ID oeminfo.ini
- ▶ Firmware 7: Firmware ID in the registry (OEM information)

If no Rexroth Windows installation or a Rexroth Windows installation modified by the machine manufacturer is installed, please contact your machine manufacturer!

2.3 Checking the installation

To check the version of your IPC maintenance software, proceed as follows:

1. Start the "IPC-Maintenance" program.
2. The installed version is displayed under "About".



Check the software version in IPC maintenance



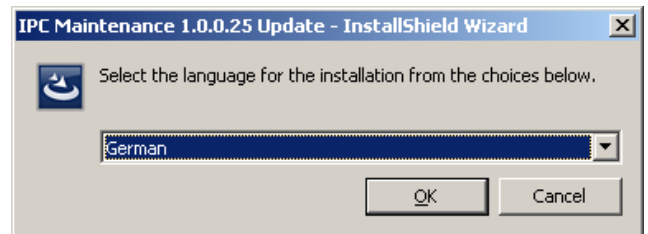
For some older image versions, the version number is not displayed in the "About" tab due to the changed name ("IPC-Maintenance.exe" to "IPC2007M.exe"). However, the version number can still be verified via the file properties of the "IPC2007M.exe" file.

3. If the version release is 1.0.0.24 or smaller, install the software update.

2.4 Installing the software update

To install the software update, proceed as follows:

1. Download the "IPCMnt_1.0.0.26_Update_Setup.zip" file. Refer to <http://www.boschrexroth.com> ▶ **Electric drive and controls** ▶ **Industrial PCs** ▶ **Box-PC/Displays** ▶ **Displays** ▶ **15" Display (example)** ▶ **Download**.
2. Unzip the "IPCMnt_1.0.0.26_Update_Setup.zip" file.
3. Copy the "IPCMnt_1.0.0.26_Update_Setup" folder on the control cabinet to the "C:\Support" directory.
4. Start the "setup.exe" program in folder "C:\Support\IPCMnt_1.0.0.26_Update_Setup" with a double-click. The setup program detects if the control cabinet PC is already installed on the current version. The installation is completed and the following message is output: "The current version is already installed. Update not required".
5. Select the installation language for the update.



Select installation language for the setup

6. Confirm the welcome dialog with "Next".
7. Subsequently, select "Install" and then "Complete".

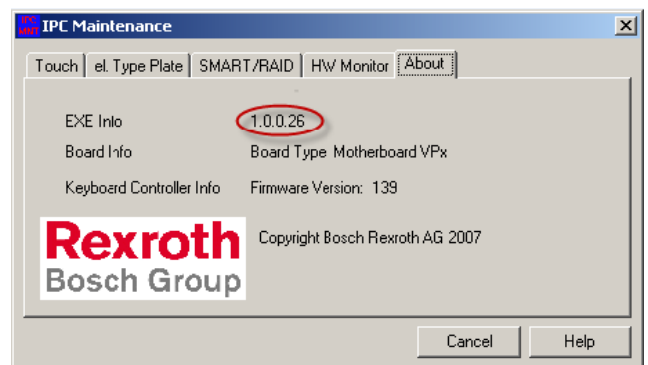


The software update replaces the "IPCMnt.exe" file and the corresponding help file. If required, the redistribution package is installed.

2.5 Checking software updates

To check the software update, proceed as follows:

1. Start the "IPC-Maintenance" program.
2. The installed version is displayed under "About" (required: 1.0.0.26).



Check the software version in IPC maintenance

Bosch Rexroth AG
Electric Drives and Controls
Bgm.-Dr.-Nebel-Str. 2
97816 Lohr, Germany
Phone +49 9352 18 0
service.svc@boschrexroth.de
www.boschrexroth.com/electrics



Copyright

© Bosch Rexroth AG 2015

This document, as well as the data, specifications and other information set forth in it, are the exclusive property of Bosch Rexroth AG. It may not be reproduced or given to third parties without its consent.