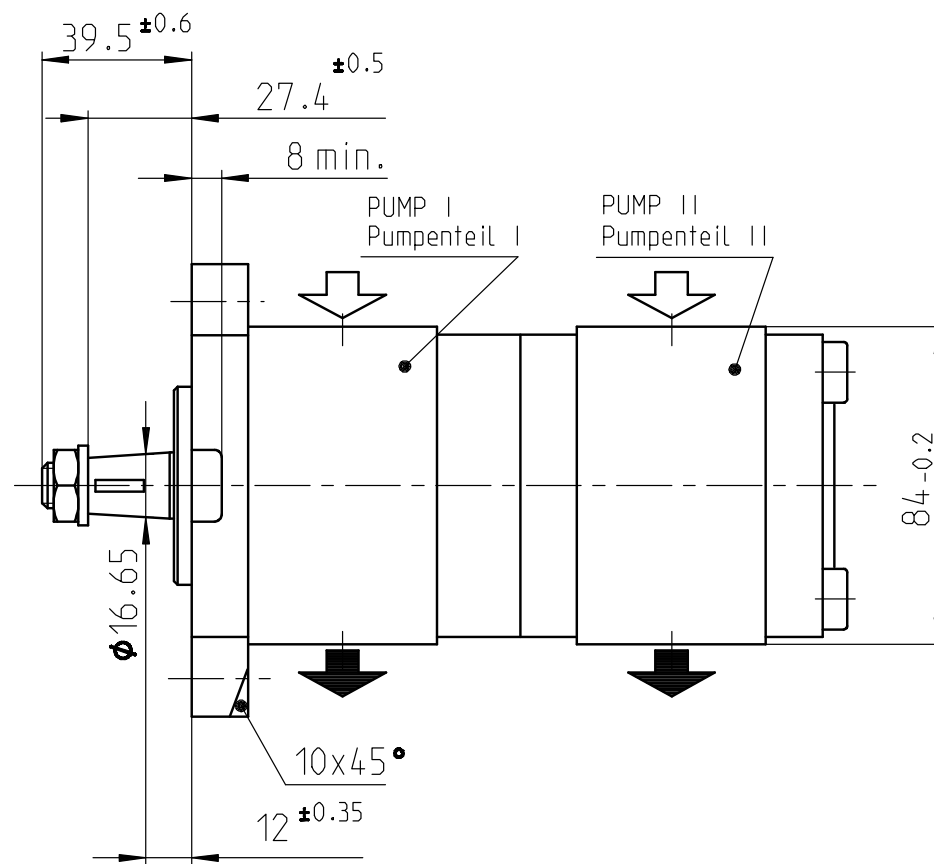
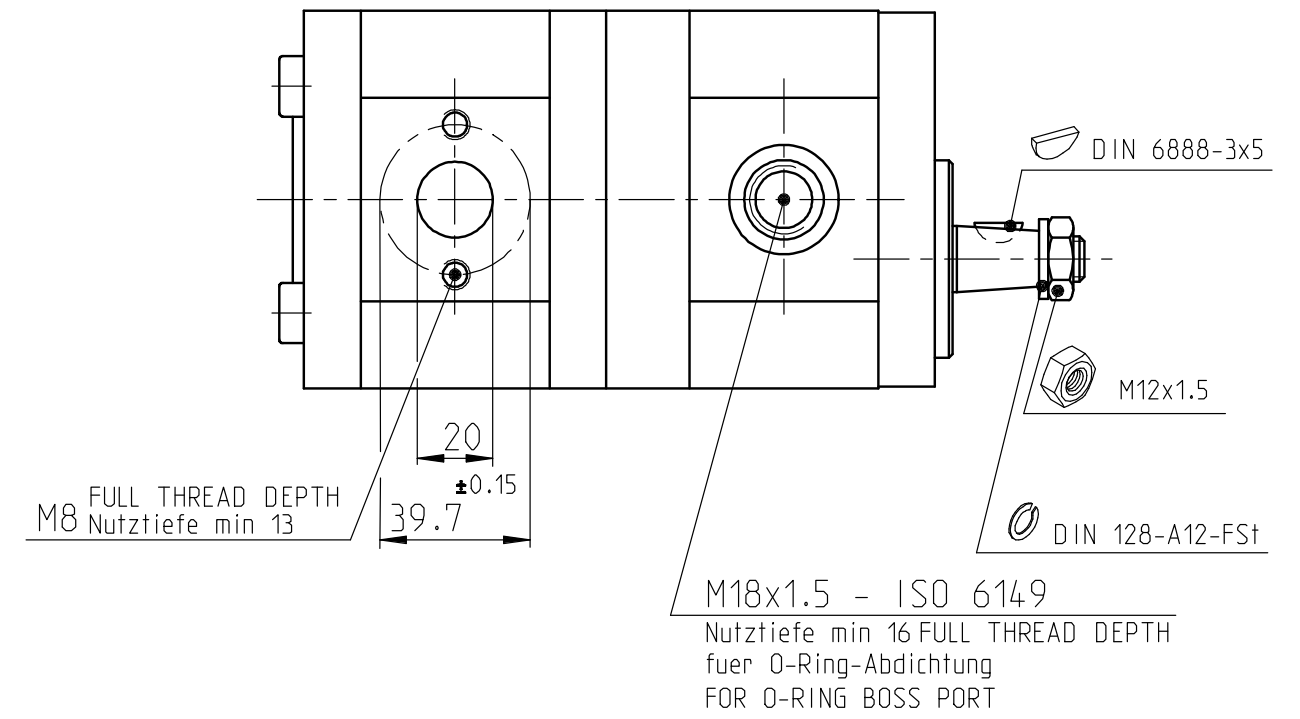
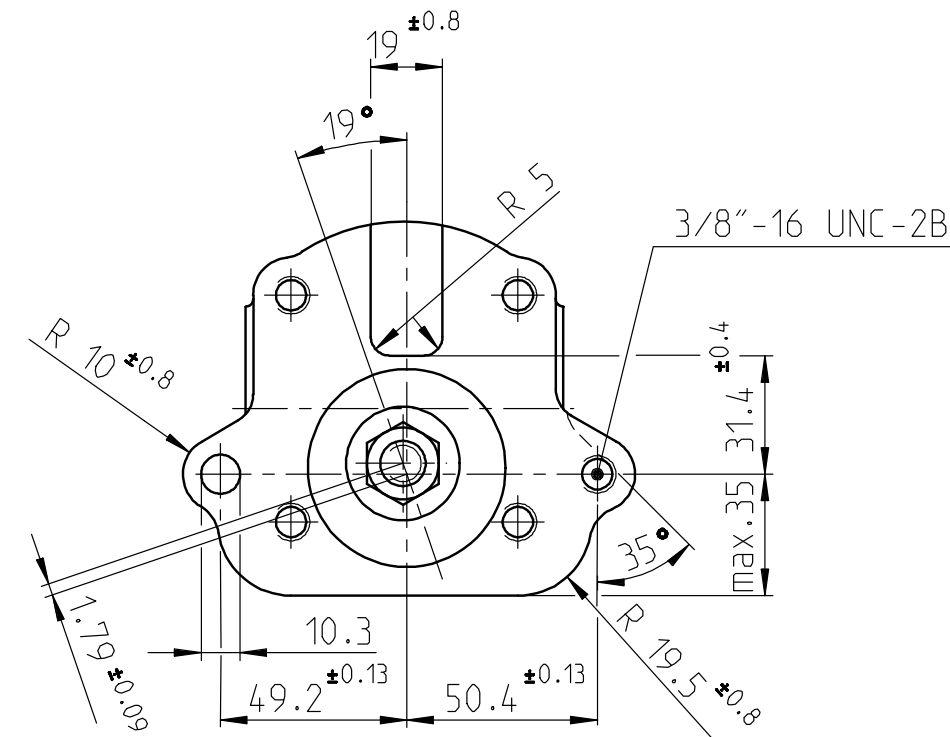
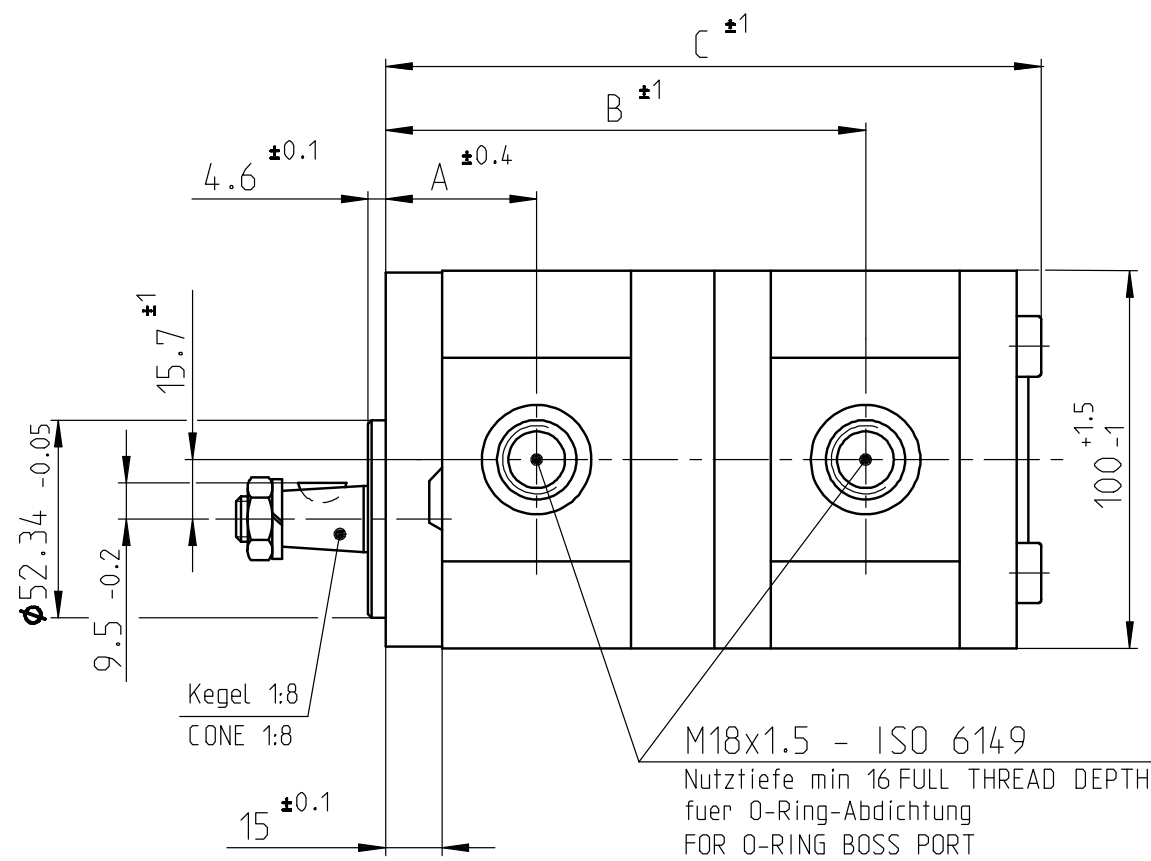


© This document, as well as the data, specifications and other information set forth in it, are the exclusive property of Bosch Rexroth AG. It may not be reproduced or given to third parties without its consent.



HINWEISE UND ANGABEN

Betriebsbedingungen siehe Y 510 201 598

Die Darstellung zeigt eine linksdrehende Pumpe (Auf Antriebswelle gesehen).
Bei rechtsdrehender Pumpe ist Druck- und Sauganschluss vertauscht
Die Pumpe darf nur in angegebener Drehrichtung drehen.

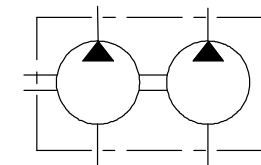
Alle Anschlüsse für Transport und Lagerung staubdicht verschlossen, z.B. mit Kunststoffstopfen

ADDITIONAL INFORMATION



WORKING CONDITIONS SEE Y 510 201 598

CCW ROTATION SHOWN.
CW ROTATION PUMPS HAVE PRESSURE AND SUCTION PORT
ON OPPOSITE SIDE. PUMP MUST BE DRIVEN IN PROPER DIRECTION ONLY.

ALL OIL PORTS CLOSED PROPERLY AGAINST DUST FOR TRANSPORT AND STORAGE, E.G. WITH PLASTIC CLOSURE CAPS.



.
B 510 844 220	.	AZPFF-11-008/016LHX50XXKB-S0251	Links/CCW	8	16	3000	190	190	42.5	133.3	188.4	.
B 510 844 213	0 510 465 364	AZPFF-11-008/011LHX50XXKB-S0251	Links/CCW	8	11	3000	190	190	42.5	131.6	180	.
B 510 844 215	0 510 365 315	AZPFF-11-005/014LHX50XXKB-S0251	Links/CCW	5.5	14	3000	190	190	42.5	134.1	180.9	.
Entwurfs- Zeichnungs-Nr.	Bestell-Nr.	Typ-Aufschrift	Dreh- richtung	PI Volumen [cm ³ /U]	PII	max. Drehzahl [U/min]	PI max. Druck (intermitt.) [bar]		A	B Mass [mm]	C	Bemerkungen
DRAWING	PART NUMBER	DESIGNATION	DIR. OF ROTATION	DISPLACEMENT		MAX. SPEED	MAX. PRESSURE	DIMENSIONS			REMARKS	

AK	--	20220503	ETI2KOR		7930	DC-MO/EGE1	ECR 104289			
AA	--	19990906	MG		7930	DC-MA/EPE1	erstellt			
Ind. Change/Aend.		YYYYMMDD	Drawn/Gez.	checked/Prüf.	Released./Freig.	BWN	Resp. dept./Verantw. Abt.	Add. info./Zus. Info.		
Lang./Spr.	Syst.	Wght./Gew.	<div> rexroth A Bosch Company</div>				Sheet/Bl.			
EN/DE	PE						HY GEAR PUMP AZPFF HY-ZAHNRADPUMPE		1/1	
		Scale/M. Stab 1:2								
MNR			OFFER DRAWING ANGEBOTSZEICHN.				Doc. type AGZ	DP/TD 001	Ind. AK	Format A2
			Repl. for				Repl. by			

general tolerances for/Allgemeintoleranzen fuer		
lin.dim./L.masse	radii/Radien	angles/Winkel
± 0.3	--	$\pm 1^\circ$
drawing standard/ Zeichnungsstandard		ISO Standard
hist. document no./ Hist. Dokumentnr.		26:321084213

20220503		ET12KOR	20220503	DC-MO/EGE1	ECR 104289
----------	--	---------	----------	------------	------------