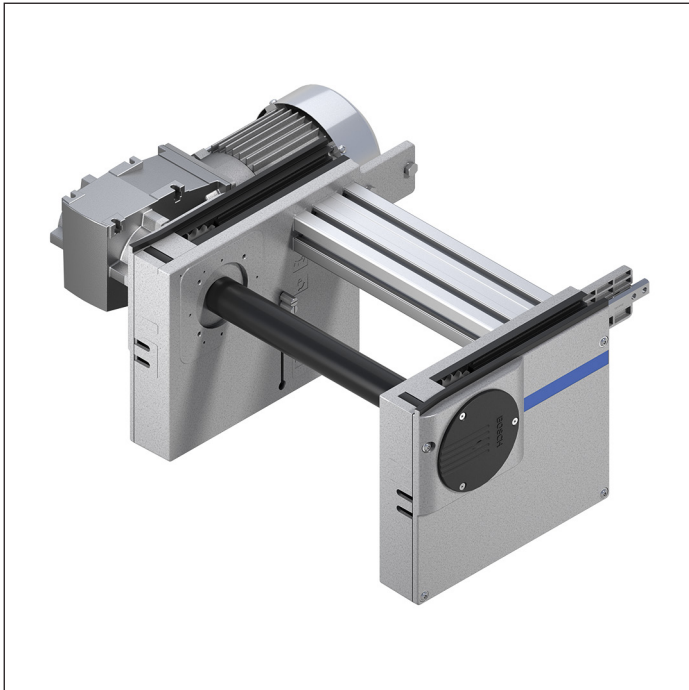
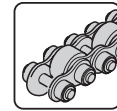


Drive Module AS 2/R-1200



- ▶ For conveyor unit self-assembly
- ▶ For use in conjunction with UM 2/... return units and ST 2/... sections
- ▶ Conveyor medium: Accumulation roller chain (standard and low-maintenance)
- ▶ Suitable for use in an EPA
- ▶ Motor mounting right, left or central (centrally on track widths of 240 mm and above)
- ▶ Motor connection: Optionally with cable/plug or terminal box
- ▶ Special models on request

Notice: Positioning of WTs in the area of the drive heads/return heads is not permitted.

The AS 2/R... drive module drives the accumulation roller chain conveyor medium in self-bult conveyor units with sections, return units and accumulation roller chains.

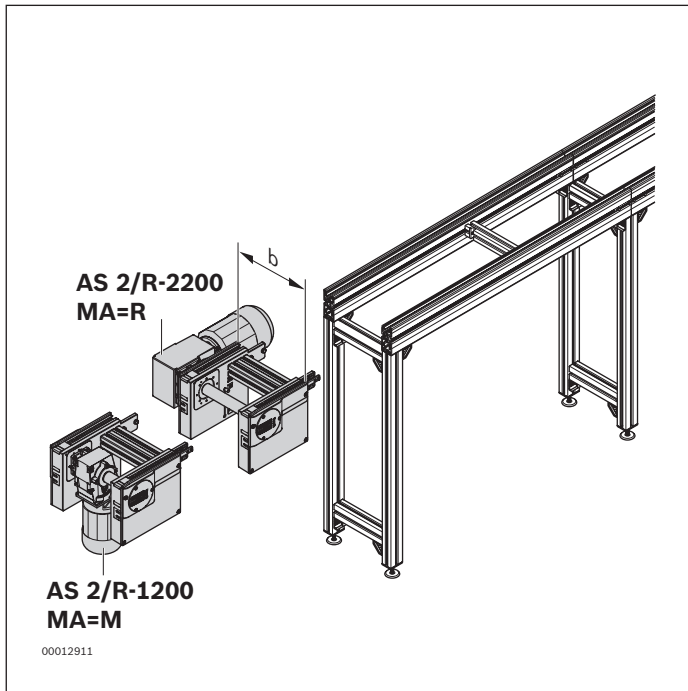
Recommended accessories

- ▶ Decentralized automatic lubrication unit LU 2 or central automatic lubrication unit LU 2/P

Condition on delivery

- ▶ Assembled

Ordering information



Material number		3842998040
b (mm)	Track width in direction of transport	160; 240; 320; 400; 480; 640; 800; 1040; 1200
		160 ... 1200 ¹⁾
v_N (m/min)	Nominal speed	0 ²⁾ ; 6; 9; 12; 15; 18 ³⁾
U (V)	Voltage at 50 Hz	200; 400
U (V)	Voltage at 60 Hz	220; 400; 460; 575
f (Hz)	Frequency	50; 60
AT	Motor connection S = cable/plug K = terminal box	S; K
MA	Motor mounting R = right L = left M = center	R; L; M ⁴⁾

¹⁾ Individual width variants can be ordered

²⁾ $v_N = 0$: without motor or gear

³⁾ Not possible at $f = 60$ Hz

⁴⁾ MA = M when $b \geq 240$ mm

Technical data

Material number		3842998040
Max. section load in accumulation operation	kg	1200
ESD		Yes
Length conveyor medium	l_{AS} mm	625

