

Control components

Rocker Gen 1



- For use with Rexroth control grips
- For all construction, handling or agricultural applications



These components are intended to be sold integrated in a Rexroth control grip. They are not available as spare part for safety reasons.

Features

- Several ergonomic caps of Rocker available
- Dry-contact switch technology
- Two mechanical stability
 - Return to neutral / 1 position stable
 - FNR type / 3 positions stable

Contents

Type code	2
Product description	3
Technical data	4
Dimensions	5
Cleaning guidelines	5

Type code

01	02	03
R	A	A




Rocker Generation

01	Generation 1	R
----	--------------	---

Maximum current – Mechanical stability – Neutral signal

02	100 mA	3 positions stable	Without signal at neutral	A
			With signal at neutral	B
		1 position stable	With signal at neutral	N
			Without signal at neutral	S
	1 A	1 position stable	Without signal at neutral	C

Cap shape – Cap color

03	Symmetric	Gray		A
		Orange		G
	Asymmetric	Gray		B
		Orange		O

Product description

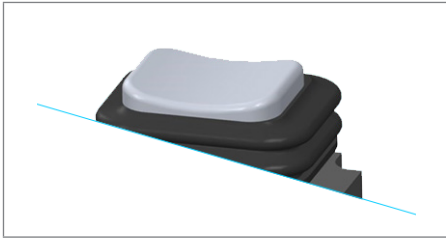
Mechanical stability

Two main constructions:

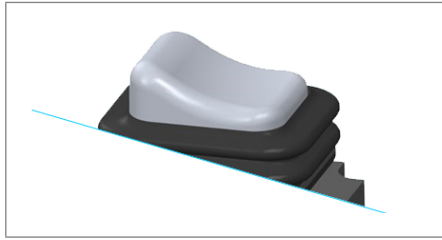
- FNR (Driving direction): 3 positions stable
- Binary movements: 1 position stable return to neutral

Rocker caps shape

▼ Symmetric – A

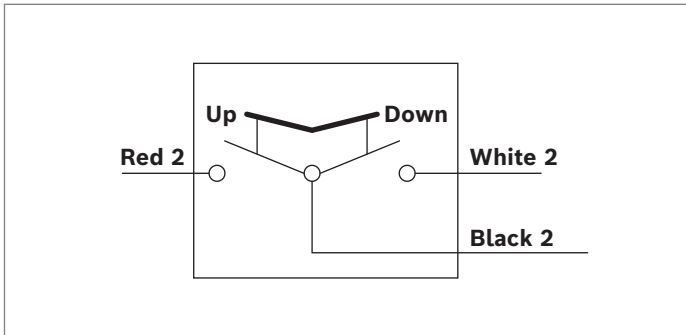


▼ Asymmetric – B

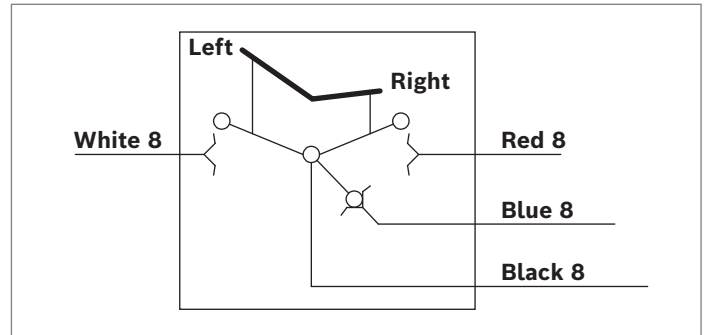


Electric diagrams

▼ Without Neutral output RC / RS



▼ With Neutral output – RB



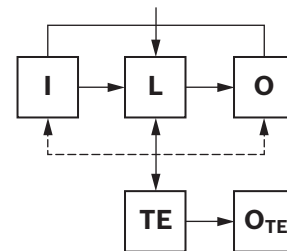
Electrical architecture for 2 outputs Rocker (RC/RS/RA)

- Fulfills ISO 13849 Category 1 requirements
- $MTTF_D = 32$ years



Electrical architecture for 3 outputs Rocker (RB / RN)

- Fulfills ISO 13849 Category 2 requirements with external monitoring (Machine ECU or CAN joystick base).
- DC = Medium
- $MTTF_D = 32$ years

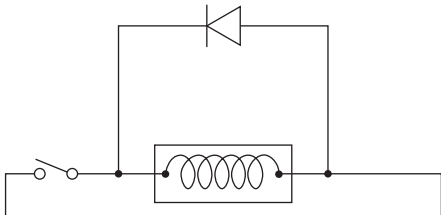


Technical data

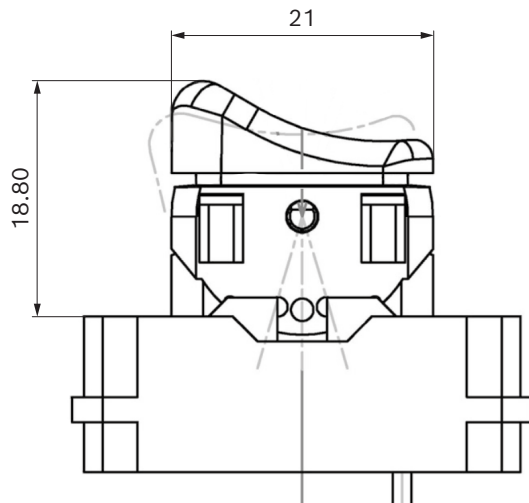
General			
Environmental protection		IP65 (IP69K when installed in control grip)	
Max. permissible force on the electrical functions	N	50	
Actuation angle	°	±15°	
Design life according to wiring recommendations	3 positions stable	Cycles	1 Mio cycles
	1 position stable	Cycles	2 Mio cycles
Max. passing current (RA, RB, RN, RS)	mA	100	
Max. passing current (RC)	A	1	
Diameter of the insulation of each conducting cable	mm	2.2 ±0.85 (20 AWG)	
Section of each conducting cable	mm²	0.5	
Electromagnetic compatibility (EMC)		Qualified to standards ISO 13766 rev. 2 (2018)	
Performance level according to ISO 13849	Single channel	Designed to be implemented in PLC machine functions	
	Double channel (redundancy)	Designed to be implemented in PLd machine functions	

For the 1A version (type code **RC**):

To ensure the service life of the electrical switches, we recommend freewheeling diodes to be switched parallel to the inductances



Dimensions



Cleaning guidelines

- Never use solvents or aggressive cleaning agents like bleach. Clean the control grip using only water and a plastic cleaning agent if necessary.

Bosch Rexroth DSI S.A.S.

BP 101
91, bd Irène Joliot-Curie
69634 Vénissieux Cedex
France
Tel. +33 4 78 78 52 52
www.boschrexroth.fr

© Bosch Rexroth AG 2021. All rights reserved, also regarding any disposal, exploitation, reproduction, editing, distribution, as well as in the event of applications for industrial property rights. The data specified within only serve to describe the product. No statements concerning a certain condition or suitability for a certain application can be derived from our information. The information given does not release the user from the obligation of own judgment and verification. It must be remembered that our products are subject to a natural process of wear and aging.