

## Damper DA 2/100-C



- ▶ For permitted total weight of workpiece pallets up to 100 kg
- ▶ Pneumatic damper
- ▶ Continuously adjustable
- ▶ During infeeding in a longitudinal section
- ▶ Optimal damping at a ratio of 2:1 between heavy and light workpiece pallets
- ▶ Can be combined with WT 2, WT 2/F, WT 2/H and WT 2/F-H
- ▶ Installation location: Section ST 2/... or belt section BS 2/...

The damper cushions the impact of the arriving workpiece pallet. The DA 2/100-C is suitable for infeeding from a transverse section into a longitudinal section. It is mounted directly on the section profile of the longitudinal

section. The pneumatic return occurs as the stop gate opens, which permits the workpiece pallet to move toward the damper. The damper is not traversable.

### Scope of delivery

- ▶ Incl. fastening material
- ▶ Damper DA 2/100-C for infeeding the workpiece pallets WT 2 and WT 2/F

### Condition on delivery

- ▶ Not assembled

### Ordering information

Product description	Material number
Damper DA 2/100-C	3842525734

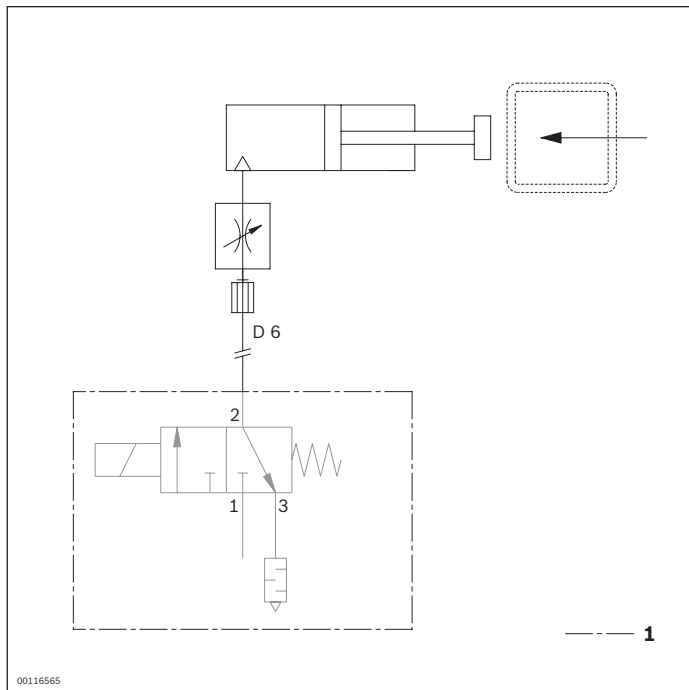
## Technical data

<b>Material number</b>		<b>3842525734</b>	
Max. total workpiece pallet weight	$m_G$	kg	100
Min. workpiece pallet weight	m	kg	5
ESD		Yes	
Material specification		Housing: Aluminum; hard anodized Stop: Steel; hardened	
Operating temperature <sup>1)</sup>		°C	+5 ... +60
Push in air connection	∅	mm	6

<sup>1)</sup> High-temperature damper on request

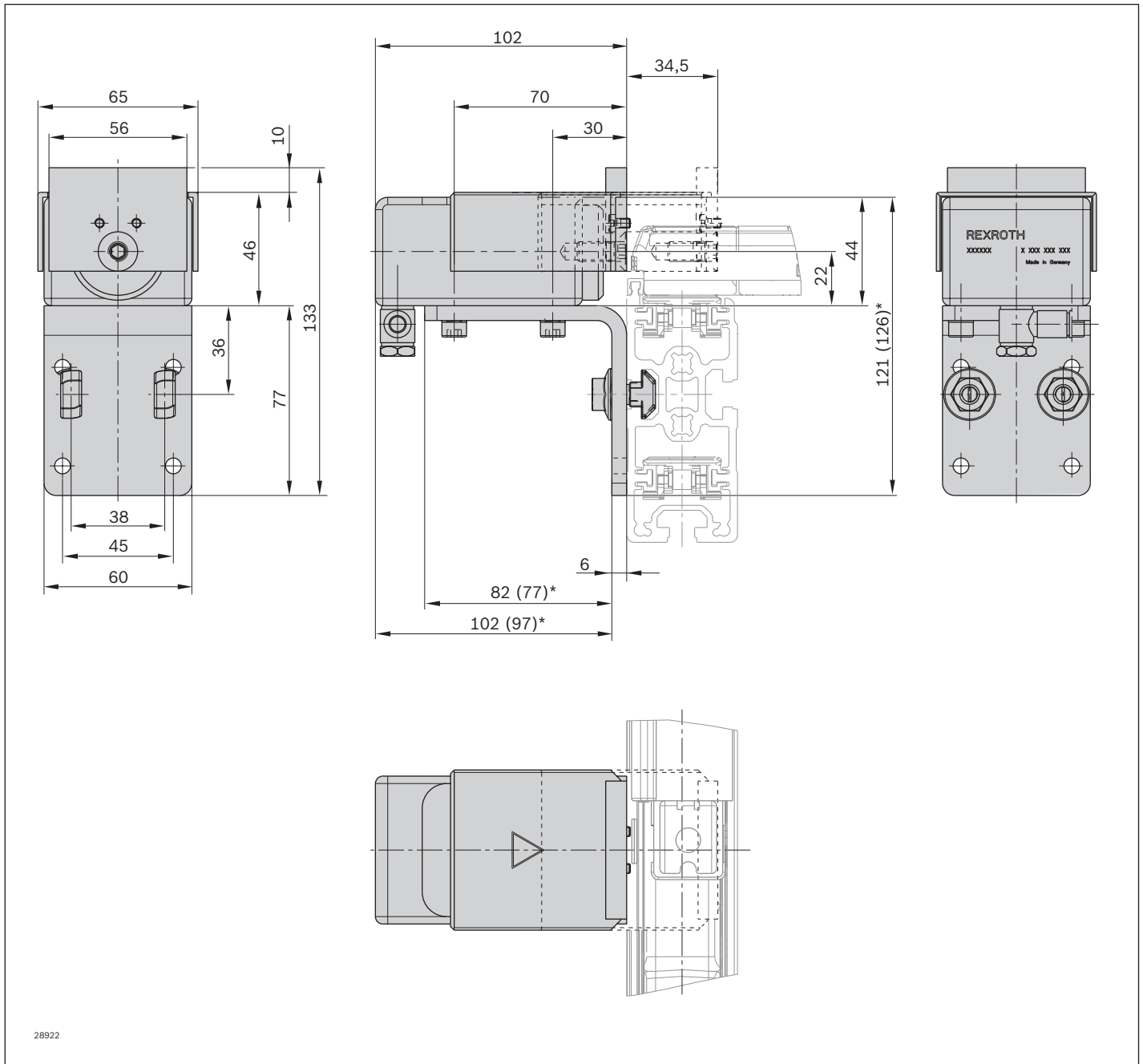
	Permitted total weight of workpiece pallet		Nominal speed
	$m_G$ (kg)		$v_N$ (m/min)
	100		6
	100		9
	100		12
	95		15
	55		18

## Circuit diagram



1 Not included in the scope of delivery

**Dimensions**



28922

\* Dimension in brackets apply to mounting on section profile ST 2/...-H

The data specified above only serves to describe the product. Due to the continuing development of our products, no statements concerning a certain condition or suitability for a certain application can be derived from our information. The information given does not exempt the user from the obligation of own judgment and verification. It must be remembered that our products are subject to a natural process of wear and aging.