

Stop gate VE 2/M



- ▶ Pneumatic stop gate
- ▶ Media resistant
- ▶ Tilting stop gate; can be opened without causing abrasion on the surface of the workpiece pallet stop surface
- ▶ Low noise; especially quiet operation during opening and closing
- ▶ Reversible operation not permitted
- ▶ Can be combined with WT 2/E, WT 2, WT 2/F and WT 2/LS

Stops one or more accumulating workpiece pallets at the defined stop surface of the workpiece pallet stop surface. When the pressure is released, the stop gate is held in the

lock position by a spring and the workpiece pallet is stopped. Mounted inside the tracks, directly on the conveyor section.

Recommended accessories

- ▶ Return stop VE 2/RS (3842531696)
- ▶ Switch bracket SH 2/...
- ▶ Position sensing stop gate

Scope of delivery

- ▶ Incl. all fastening material to mount on the conveyor section ST 2/...
- ▶ Pneumatic elements

Condition on delivery

- ▶ Assembled

Ordering information

Product description	Material number
Stop gate VE 2/M	3842531610

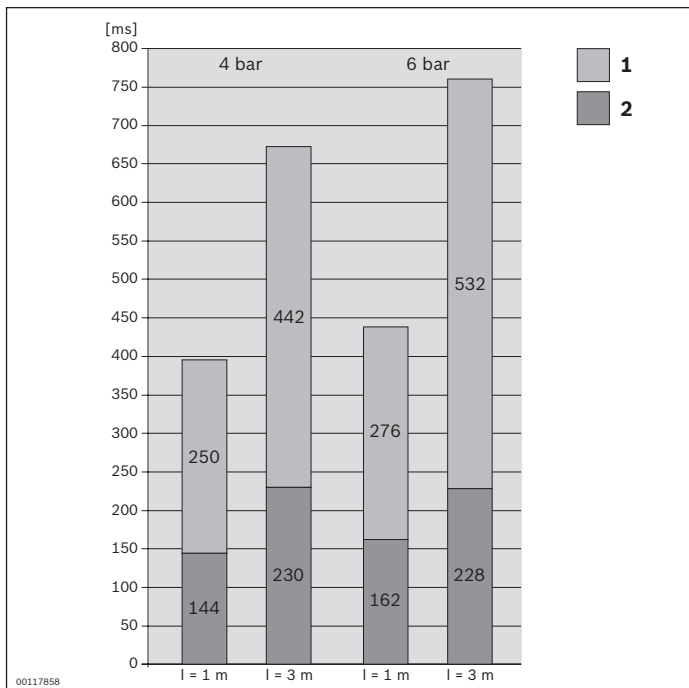
Technical data

Material number			3842531610
Max. total workpiece pallet weight	m_G	kg	200
Material specification			Housing: PA6 Safety catch: Brass Stop cam: PA66
A-rated emission sound pressure level	L_{PA}	dB(A)	<60
Operating temperature ¹⁾		°C	+5 ... +60
Required compressed air connection	p	bar	4 ... 6
Push in air connection	\varnothing	mm	4

¹⁾ High-temperature stop gate on request

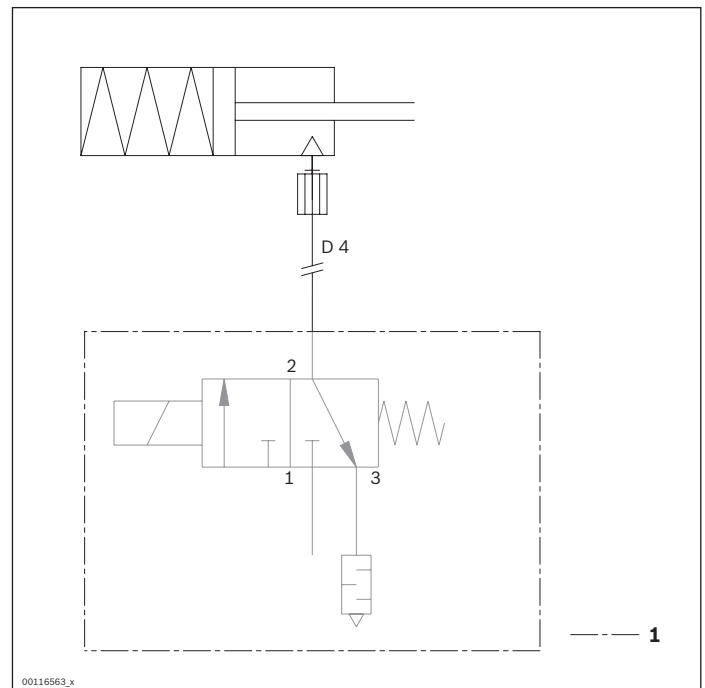
Permitted total weight of workpiece pallet m_G (kg)	Nominal speed v_N (m/min)
200	6
140	9
100	12
70	15
50	18

Opening and shutting times



l = Hose length
1 Close
2 Open at 4 bar

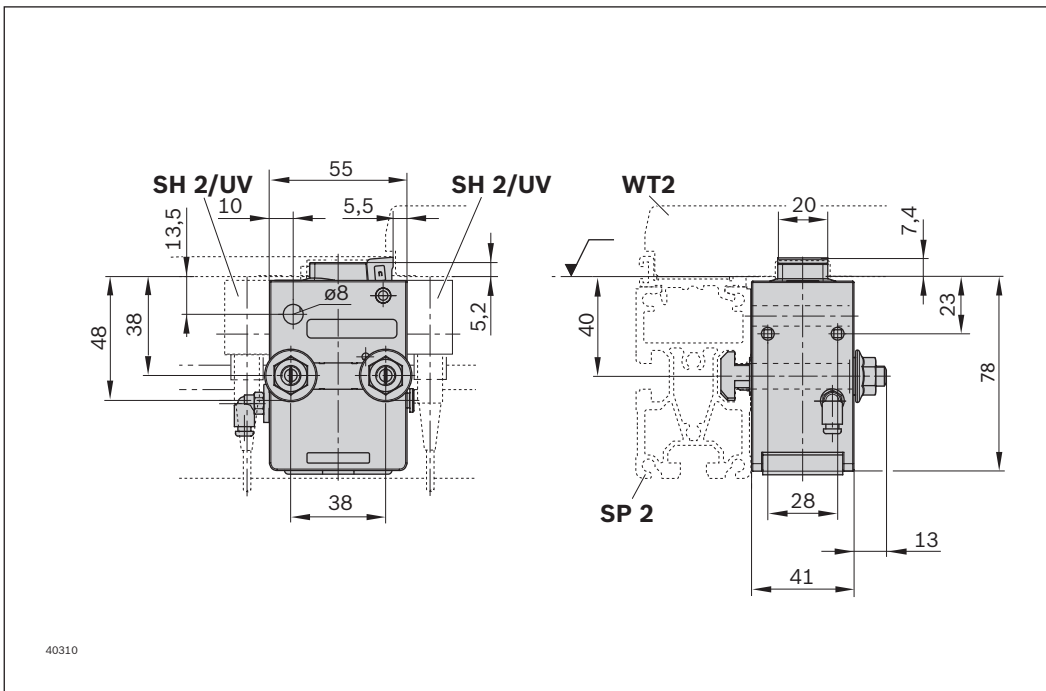
Circuit diagram



1 Not included in the scope of delivery

The data specified above only serves to describe the product. Due to the continuing development of our products, no statements concerning a certain condition or suitability for a certain application can be derived from our information. The information given does not exempt the user from the obligation of own judgment and verification. It must be remembered that our products are subject to a natural process of wear and aging.

Dimensions



The data specified above only serves to describe the product. Due to the continuing development of our products, no statements concerning a certain condition or suitability for a certain application can be derived from our information. The information given does not exempt the user from the obligation of own judgment and verification. It must be remembered that our products are subject to a natural process of wear and aging.