
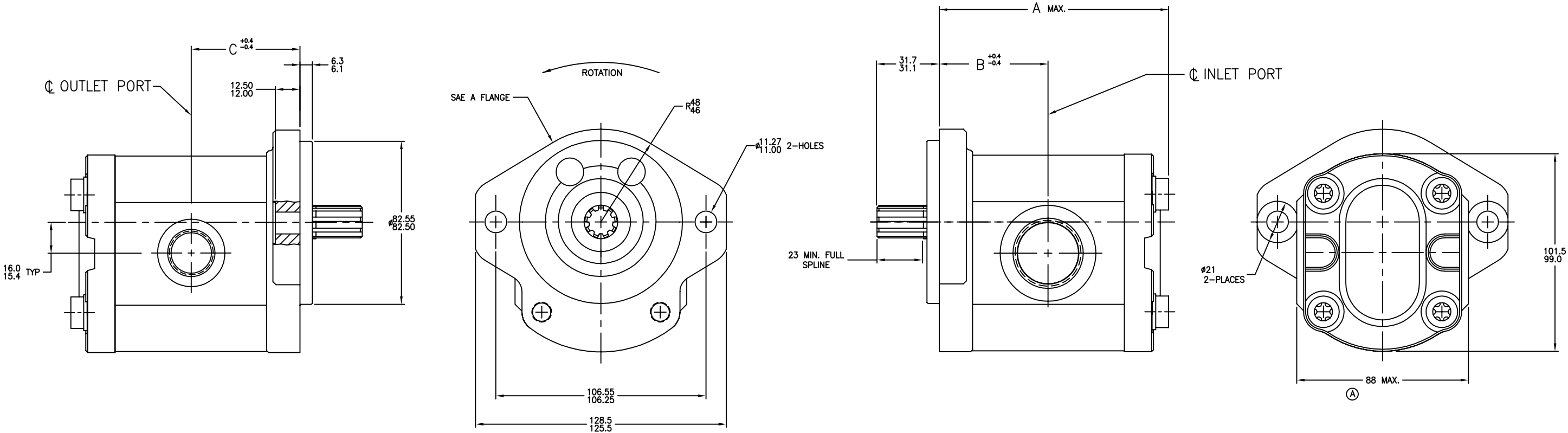






8		7		6			5	4	3	2	1
MODEL NUMBER	CATALOG NUMBER	DISPLACEMENT	OUTPUT FLOW 	A DIM.	B DIM.	C DIM.	INLET PORT (SAE O-RING BOSS)	OUTLET PORT (SAE O-RING BOSS)			
		CM³/REV	LITERS/MIN								
9 510 290 120	AZPF-22-02BLRR12MB	28.5	55.6	136.4	65.6	65.6	1.312-12UN-2B THD.	.875-14 UNF-2B THD.			

REV	DESCRIPTION	DATE	BY	CKD
	RELEASE TO PRODUCTION (CRR0304)	01-14-03	GRJ	*
A	WAS 87 MAX (CRR1453)	01-16-06	DN	GRJ
B	ADD OPERATING CONDITIONS (ECN R7878-00055)	04-04-07	MEW	*
C	MODEL CODE WAS AZPF-22-02BLRR12MB (ECN R7878-00220)	04-04-08	MEW	*
D	CHANGED CATALOG CODE (ECN R7878-00269)	04-08-09	MEW	*



 **EXTERNAL INVOLUTE SPLINE DATA**
FLAT ROOT SIDE FIT
FLAT ROOT SIDE FIT
NO. OF TEETH 9
SPLINE PITCH 16/32
PRESSURE ANGLE 30°
PITCH DIA. .56250 REF.
MAJOR DIA. .6034-.6085
FORM DIA. .504
CIRCULAR TOOTH THICKNESS:
MAX.EFFECTIVE .0942
MIN. ACTUAL .0916

GENERAL NOTES:

- METRIC LINEAR MEASUREMENTS ARE IN MILLIMETERS
- ROTATION VIEWING DRIVE END: COUNTERCLOCKWISE
-  OUTPUT FLOWS ARE AT 2000 RPM & 138 BAR USING SAE NO. 10 OIL AT 48°C
- MAX RATED SPEED: 2250 RPM
- MAX. RATED PRESSURE: 170 BAR
-  EXTERNAL INVOLUTE SPLINE DATA IN DECIMAL INCHES
- OPERATING CONDITIONS PER Y510 201 598 

9 510 290 120

DO NOT SCALE UNLESS OTHERWISE SPECIFIED TOLERANCES PER DIN 7180mm		DRN GRJ	DATE 01-14-03	DESCRIPTION	SCALE FULL
LINEAR DIMENSION TOL. 0- 6= ±0.1 6- 30= ±0.2 30- 120= ±0.3 120- 400= ±0.5 400-1000= ±0.8 ANGLES = ± 1°		APPD	DATE	TITLE	
METRIC THIRD ANGLE PROJECTION		REF. D	INTERNAL	9 510 290 120	SHEET 1 OF 1
ALL PROPRIETARY RIGHTS IN THE SUBJECT MATTER HEREOF ARE RESERVED, AND NO PERMISSION IS GRANTED TO REPRODUCE THIS PRINT IN WHOLE OR PART, OR TO DISCLOSE ANY OF THE INFORMATION UPON IT TO OTHERS.		D		Rexroth Bosch Group FOUNTAIN INN, SC 29644	