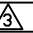
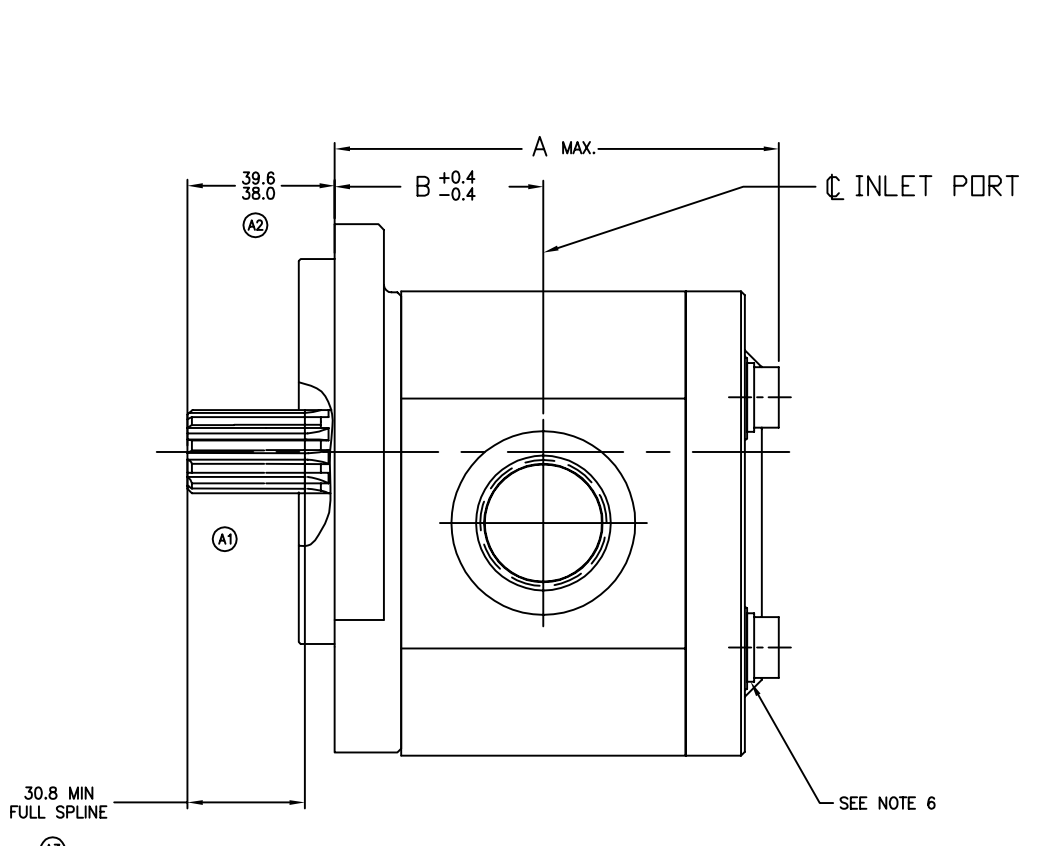
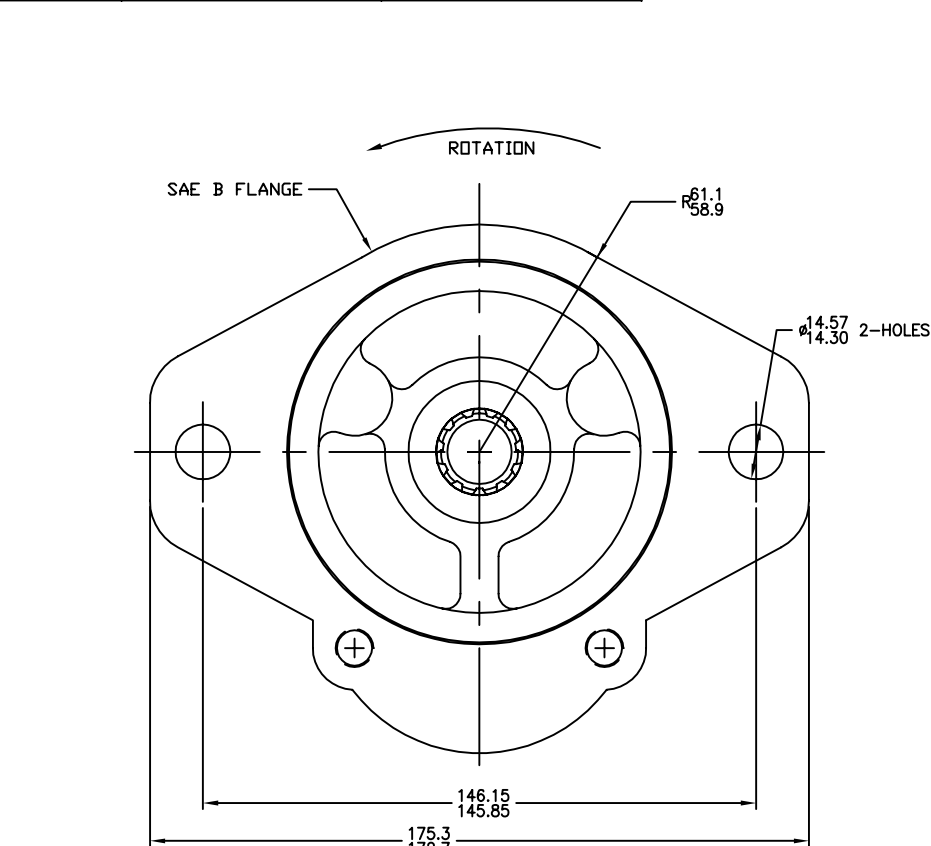
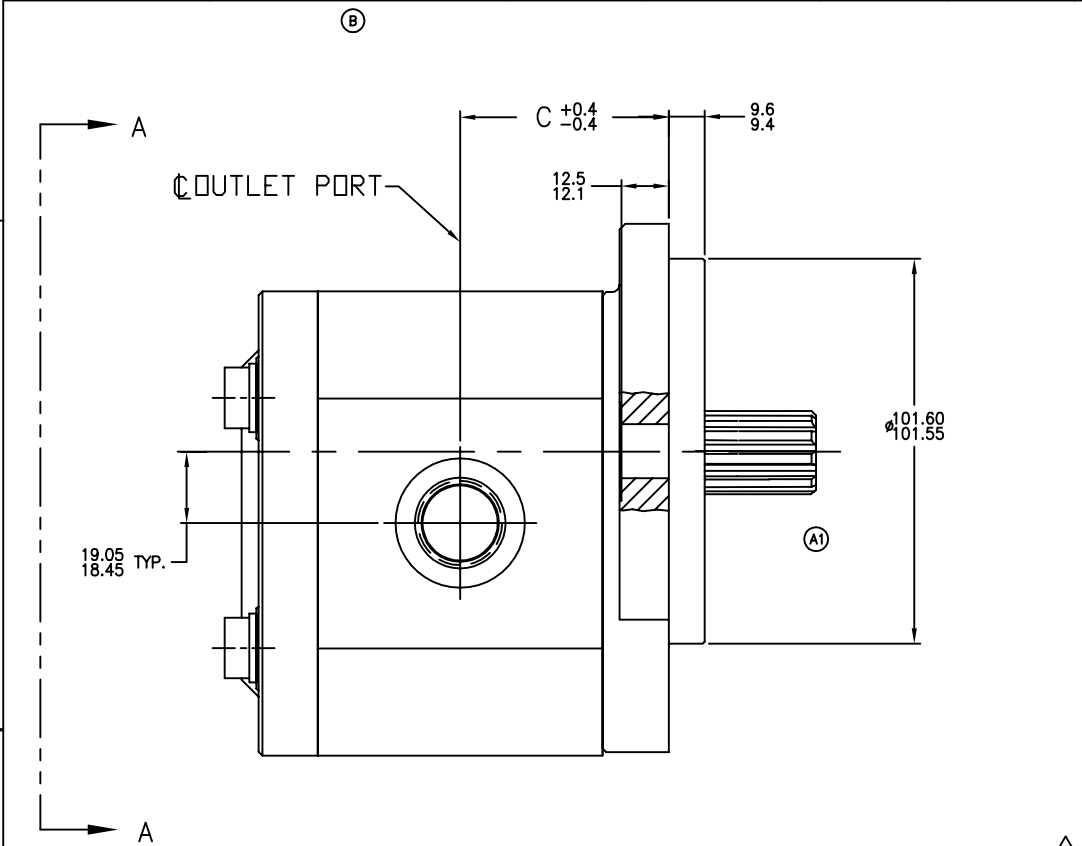

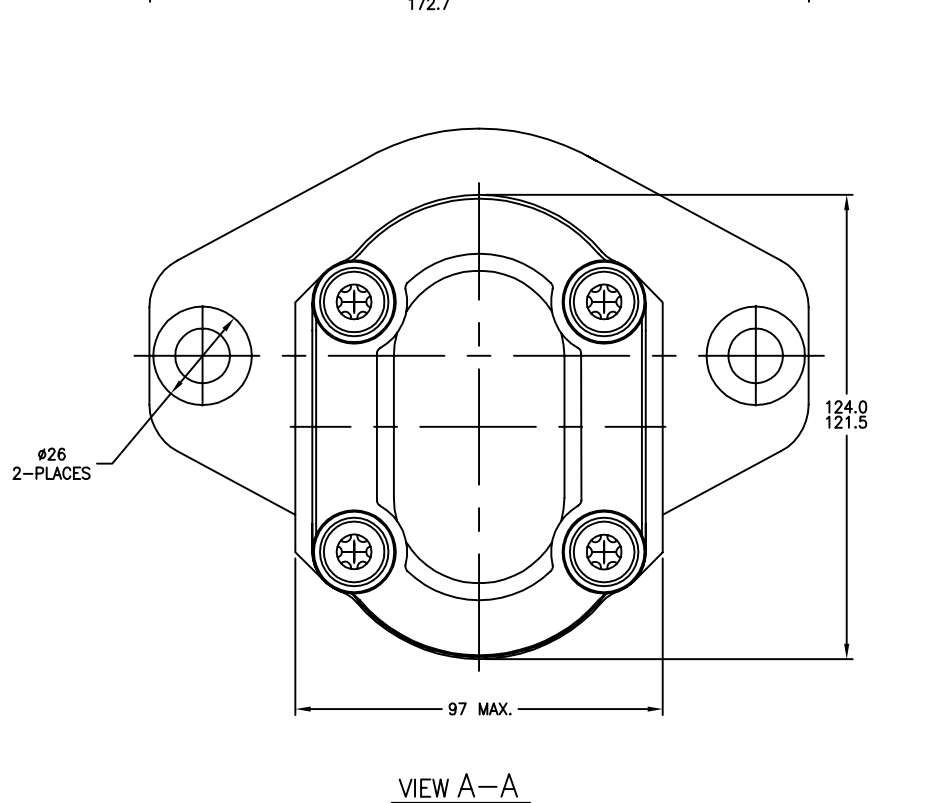




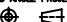
8		7		6			5	4	3	2	1
MODEL NUMBER	CATALOG NUMBER	DISPLACEMENT	OUTPUT FLOW 	A DIM.	B DIM.	C DIM.	INLET PORT <SAE O-RING BOSS>	OUTLET PORT <SAE O-RING BOSS>			
		CM <sup>3</sup> /REV	LITERS/MIN						REV	DESCRIPTION	DATE
9510390007	AZPN-12-020LDC12MB	20.45	39.3	109.8	52.1	52.1	1.312-12 UN-2B THD.	.875-14 UNF-2B THD.		RELEASE TO PRODUCTION (CRR0535)	07-29-03
9510390008	AZPN-12-022LDC12MB	23.11	44.7	114.7	53.6	53.6			A	1) PICTORIAL CHANGE TO REFLECT NEW SHAFT LENGTHS. 2) CHANGED SHAFT EXT. DIM WAS 31.2/30.5. 3) CHANGED MIN FULL SPLINE LENGTH WAS 22.4. 4) CHANGED SPLINE CLASS TO CLASS 1. (CRR1301)	05-27-05
9510390009	AZPN-12-025LDC12MB-S0040	25.78	49.9	115.8	55.1	55.1	1.625-12 UN-2B THD.	1.062-12 UN-2B THD.	B	CHANGED CATALOG CODES (ECN R7878-00273)	04-23-09
9510390010	AZPN-12-028LDC12MB-S0040	28.45	55.0	118.8	56.6	56.6					
9510390011	AZPN-12-032LDC12MB-S0040	32.45	62.5	123.3	58.8	58.8					
9510390012	AZPN-12-036LDC12MB-S0040	36.45	70.0	129.7	61.1	61.1					



EXTERNAL INVOLUTE SPLINE DATA 	
FLAT ROOT SIDE FIT-CLASS 1	
NO. OF TEETH	13
SPLINE PITCH	16/32
PRESSURE ANGLE	30°
BASE DIA.	.70365 (REF)
PITCH DIA.	.81250 (REF)
MAJOR DIA.	.8535-.8585
FORM DIA.	.7493
CIRCULAR TOOTH THICKNESS	
MAX. EFFECTIVE	.0967
MIN. ACTUAL	.0940



- GENERAL NOTES:
- METRIC LINEAR MEASUREMENTS ARE IN MILLIMETERS
  - ROTATION VIEWING DRIVE END: COUNTERCLOCKWISE
  -  OUTPUT FLOWS ARE AT 2000 RPM & 138 BAR USING SAE NO. 10 OIL AT 48°C
  - MAX RATED SPEED: UP TO 3500 RPM
  -  EXTERNAL INVOLUTE SPLINE DATA IN DECIMAL INCHES
  - LOCKWASHER REQUIRED IN INSTALLATION 9510390008 & 9510390012.

DO NOT SCALE UNLESS OTHERWISE SPECIFIED		DATE	DESCRIPTION	SCALE
GRJ 07-29-03		DATE	DATE	FULL
D.N. 10-09-03		DATE	DATE	
APPD		DATE	DATE	
9510390001TAB		DATE	DATE	
CAD-ORIGINAL		DATE	DATE	
Revisions thru CAD Only		DATE	DATE	
METRIC		DATE	DATE	
THIRD ANGLE PROJECTION 		DATE	DATE	
ALL PROPRIETARY RIGHTS IN THE SUBJECT MATTER HEREOF ARE RESERVED, AND NO PERMISSION IS GRANTED TO REPRODUCE THIS PRINT IN WHOLE OR PART, OR TO DISCLOSE ANY OF THE INFORMATION UPON IT TO OTHERS.		DATE	DATE	
PUMP-GEAR, INSTALLATION		DATE	DATE	
9510390007(TAB)		DATE	DATE	
SEE TABLE		DATE	DATE	
D		DATE	DATE	
Rexroth Bosch Group		DATE	DATE	
WOOSTER, OHIO 44691		DATE	DATE	