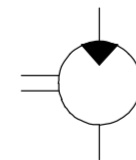


WORKING CONDITIONS SEE Y 511 200 028

- CCW ROTATION SHOWN.
CW ROTATION MOTORS HAVE PRESSURE AND SUCTION PORT
ON OPPOSITE SIDE. MOTORS MUST BE DRIVEN IN PROPER DIRECTION ONLY.

ALL OIL PORTS CLOSED PROPERLY AGAINST DUST FOR TRANSPORT AND STORAGE, E.G. WITH PLASTIC CLOSURE CAPS.

BJ
BJ
BJ
BJ
BJ
BJ
BJ
BJ
BJ
BJ



general tolerances for/Allgemeintoleranzen fuer		
lin.dim./L.masse	radii/Radien	angles/Winkel
±0.3	-	±1°
all linear dimensions in/ Alle Laengenmasse in		mm
drawing standard/ Zeichnungsstandard		ISO Standard
hist. document no./ Hist. Dokumentnr.		25.3711240001

B.J.	--	20220420	CPV2KOR	L6G5SI	len251	7930	DC-MO/EGE1		ECR 104289
AA	--	20050721	sL			7930	DC-MA/EPE		
Ind./Change/Aend.		YYYYMMDD	Drawn/Gez.	Gitter/Fab./Bew.	Releas./Freig.	BWN	Resp. depl./Verantw. Abt.	Add. info./Zus. Info.	
Lang./Spr.	Syst.	Wght./Gew.	rexroth A Bosch Company OFFER DRAWING ANGEBOTSZEICHN.					HYDRAULIC GEAR MOTOR AZMF	Sheet/Bk.
EN/DE	PE	Scale/Mstab						HYDROZAHNRAD MOTOR	1/1
	.	1:2						Doc./Type	
MNR					Agz	RA98445720			DP/TD
					Repl. for			001	Ind. BJ
							Repl. by		Format A2