

Systems

Fluid Power

rexroth
A Bosch Company

Bosch Rexroth

Academy

www.boschrexroth.com



Table of contents

Automation at your fingertips	03
Industrial Hydraulics	08
Mobile Hydraulics	10
Pneumatics	11

- ✓ Here, you will find an overview of our training systems on fluid power.
- ✓ For technical details, please visit our [Rexroth store](#).
- ✓ We will gladly create a suitable offer for you.
Contact: training@boschrexroth.de

Bosch Rexroth Academy

Innovations and trends from the industry for the educational market

Welcome to the Bosch Rexroth Academy

With more than 225 years of experience as a global industrial enterprise and leading expert in drive and control technology, we have sound product, technology, and process know-how. We are happy to share this knowledge with you and accompany you on the exciting path of digital transformation as your educational partner for challenging technical education.

WE MOVE. YOU WIN.



Systems

Technology at your fingertips: Our workstations, which are equipped with standard industrial components, allow you to gain practical experience as well as technical know-how combined with problem-solving expertise.

www.boschrexroth.com/academy-systems



Training courses

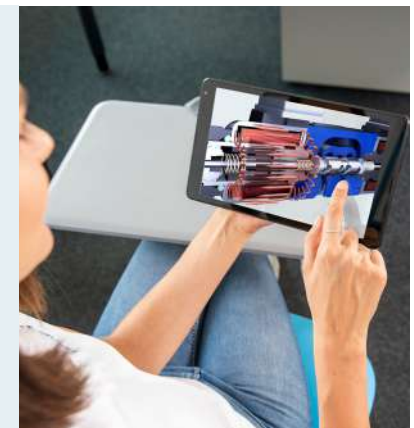
Experience high-quality training with digital learning methods and content for your personal basic and advanced training. Choose your technology and learn from the basics right up to expert knowledge.

www.boschrexroth.com/academy-trainings

Media

Analog and digital ideally combined: Immerse yourself in our extensive media offer and use our media for modern and digital knowledge transfer.

www.boschrexroth.com/academy-media





Technology at your fingertips

Bosch Rexroth's modular training systems are precisely tailored to the required qualification levels of industrial and educational institutions.

Each training system consists of the workstation, the components contained in the device sets and the training content included in the exercises. The training systems provide both beginners and advanced trainees with practical knowledge in the fields of hydraulics and pneumatics.

The modular training systems developed by the Bosch Rexroth specialists provide beginners and advanced employees with hands-on technology, know-how and solution competence. Founded practice-oriented knowledge can be experienced through industrial serial components – with internationally standardized programming languages and open interfaces.

Equipment of technical rooms

We will gladly plan your technical room with you and equip it tailor-made according to your requirements. Our certified partners will support us with their expertise.



Systems

Term definitions

Learning topics with defined device sets

For one learning topic, there can be several device sets with corresponding exercises. In this brochure, you will find the learning topics on/off hydraulics, continuous control valve technology, mobile hydraulics and pneumatics. A device set is an assembly of components for the completion of practical exercises.

Additional learning topics with defined extension device sets

Additional learning topics can be the topics regarding troubleshooting, for example. These additional learning topics are offered as a supplement and for the deepening of special topics. They can then be taught using extension device sets and suitable exercises.

Extension device sets

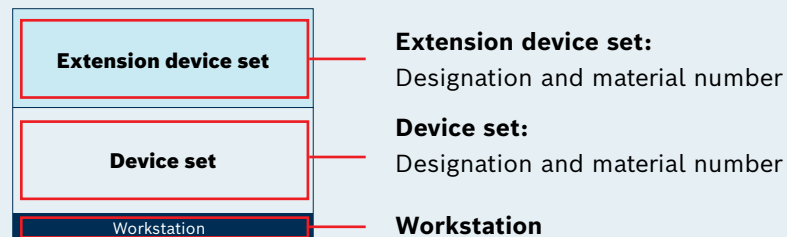
An extension device set is the additionally required equipment in order to progress from one or several learning topics to the next.

Workstations

Workstations are used to hold components from the device sets for completing the practical exercises from the exercise books.

Training systems

A training system combines **workstations, device sets and exercises**.



Example workstation, device set and exercises

Systems

Application areas of the workstations

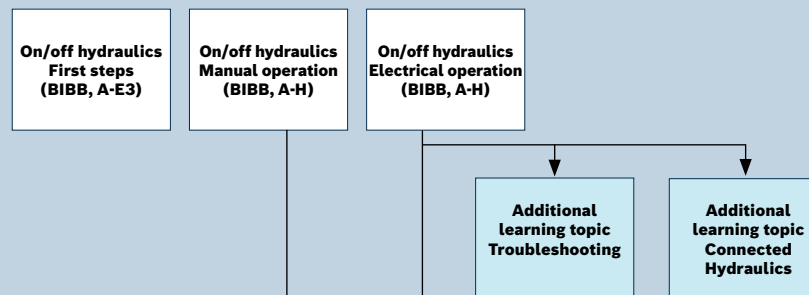
Bosch Rexroth's technical know-how and solution expertise in the field of industrial applications are seamlessly integrated into our modularly designed workstations – so they precisely meet the qualification levels required by the industry.

Device sets

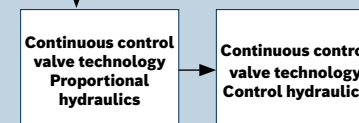
Hydraulics	Hydraulix 200	Hydraulix 300	
On/off Hydraulics			
First steps	X	X	
Manual operation	X	X	
Electrical operation	X	X	
Hydraulics troubleshooting	X	X	
Connected Hydraulics	X	X	
Continuous control valve technology			
Proportional hydraulics		X	
Control hydraulics		X	
Mobile Hydraulics			
Throttle control		X	
Load-sensing control		X	
LUDV control system		X	
Hydrostatic steering systems		X	
Programmable remote control (joystick)		X	
Pneumatics	Multiplex 100	Multiplex 200	Multiplex 300
Manual/pneumatic operation	X	X	X
Electrical operation	X	X	X

Total overview of the learning topics

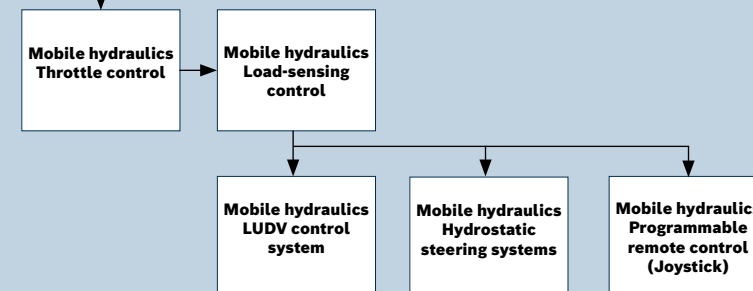
ON/OFF HYDRAULICS



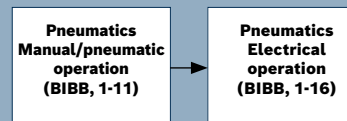
CONTINUOUS CONTROL VALVE TECHNOLOGY



MOBILE HYDRAULICS

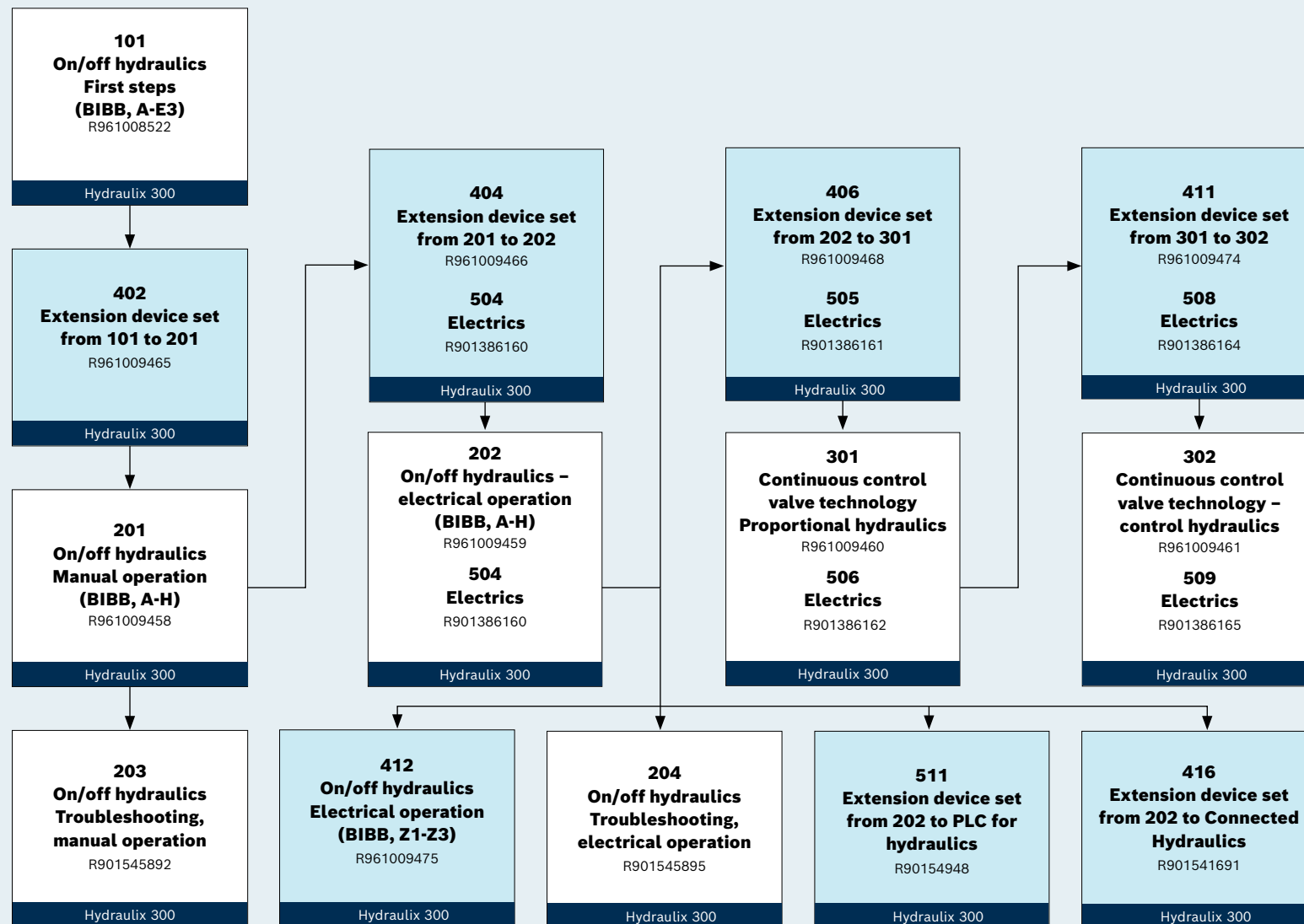
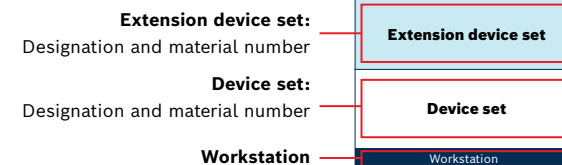


PNEUMATICS



Learning topics industrial hydraulics

Overview of the device sets for the workstation Hydraulix 300



Contains learning fields from the following training occupations (selection)

Plant mechanic

Industrial mechanic

Machine and plant operator

Mechatronic engineer

Tool mechanic

Cutting machine operator

Here you can find further information:

Technical details, overview of components, exercises and accessories:

[Rexroth store](#)

Accompanying training courses:

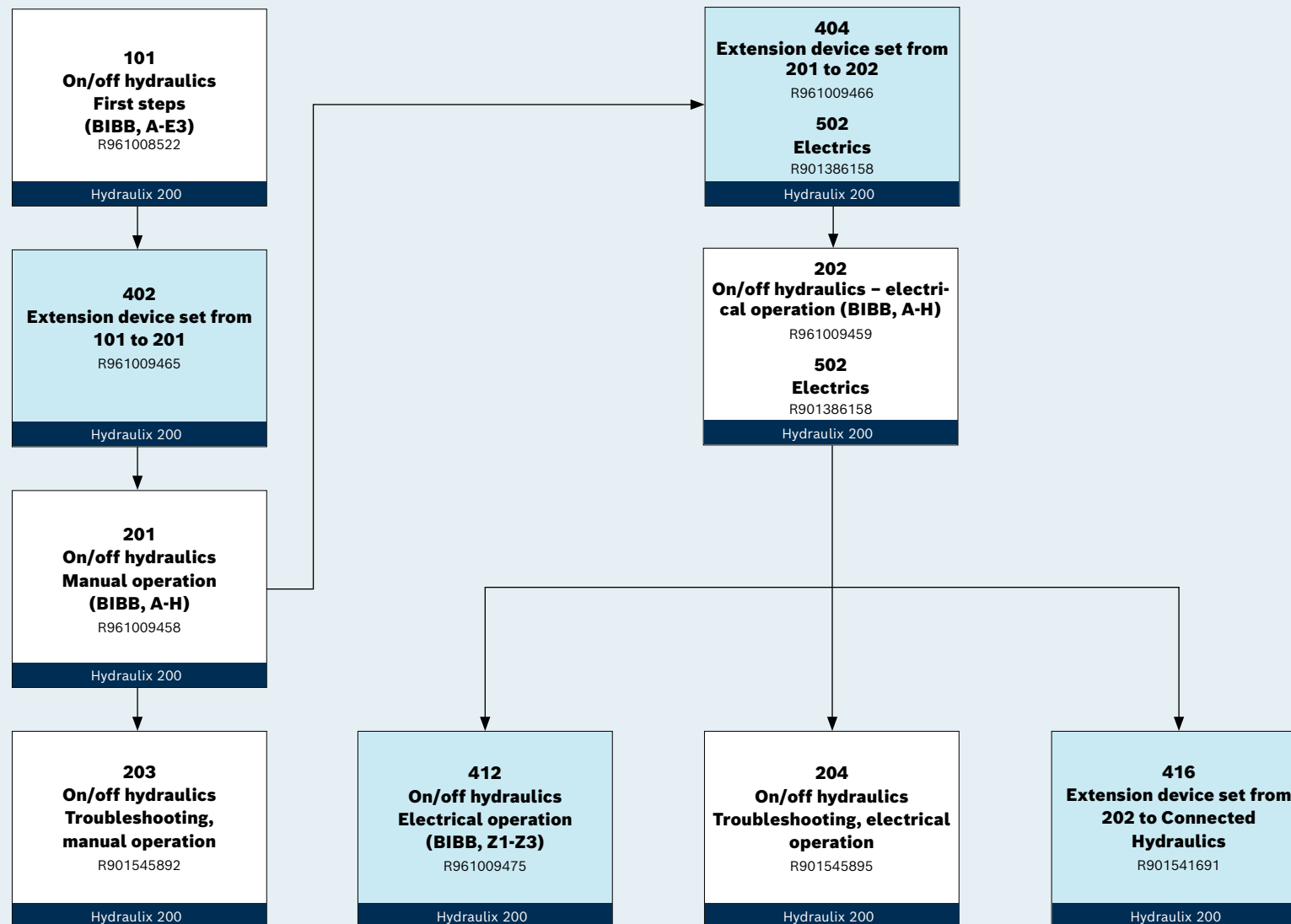
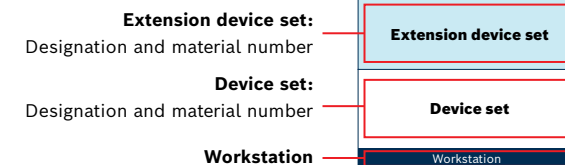
[Training course finder](#)

Enquiry for a concrete offer:

training@boschrexroth.de

Learning topics industrial hydraulics

Overview of the device sets for the workstation Hydraulix 200



Contains learning fields from the following training occupations (selection)

Plant mechanic
Industrial mechanic
Machine and plant operator
Mechatronic engineer
Tool mechanic
Cutting machine operator

Here you can find further information:

Technical details, overview of components, exercises and accessories:

[Rexroth store](#)

Accompanying training courses:

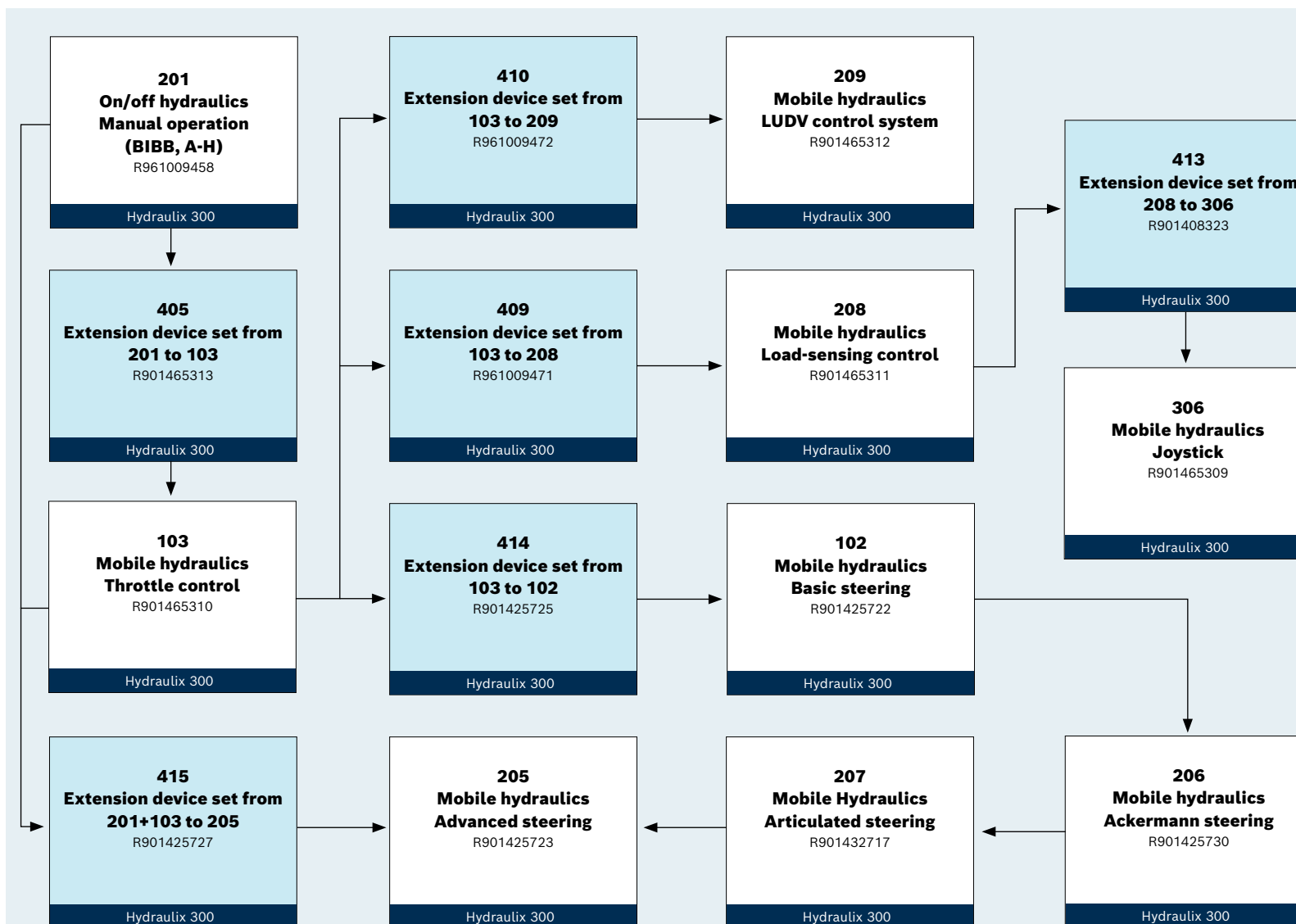
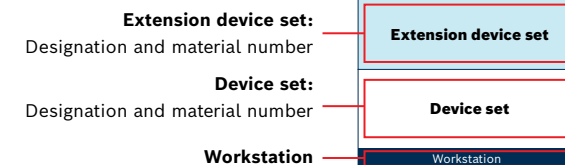
[Training course finder](#)

Enquiry for a concrete offer:

training@boschrexroth.de

Learning topics mobile hydraulics

Overview of the device sets for the workstation Hydraulix 300



Contains learning fields from the following training occupations (selection)

Construction equipment operator

Mechatronics engineer for agricultural and construction machinery

Here you can find further information:

Technical details, overview of components, exercises and accessories:

[Rexroth store](#)

Accompanying training courses:

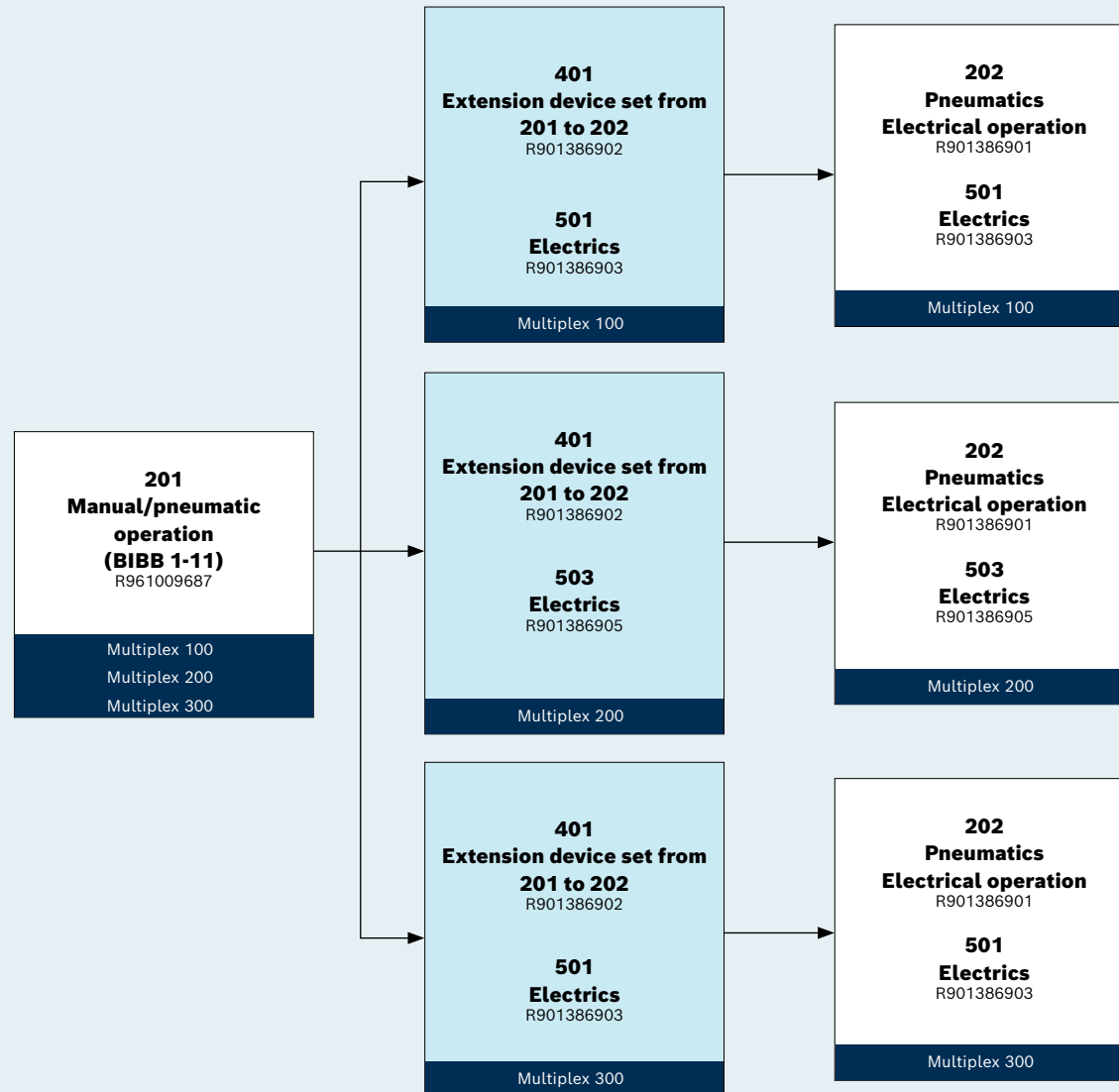
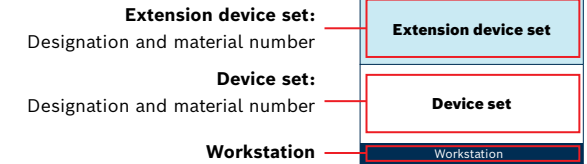
[Training course finder](#)

Enquiry for a concrete offer:

training@boschrexroth.de

Learning topics pneumatics

Overview of the device sets for the Multiplex workstation



Contains learning fields from the following training occupations (selection)

Plant mechanic
Industrial mechanic
Mechatronic engineer
Production engineer
Tool mechanic
Cutting machine operator

Here you can find further information:

Technical details, overview of components, exercises and accessories:

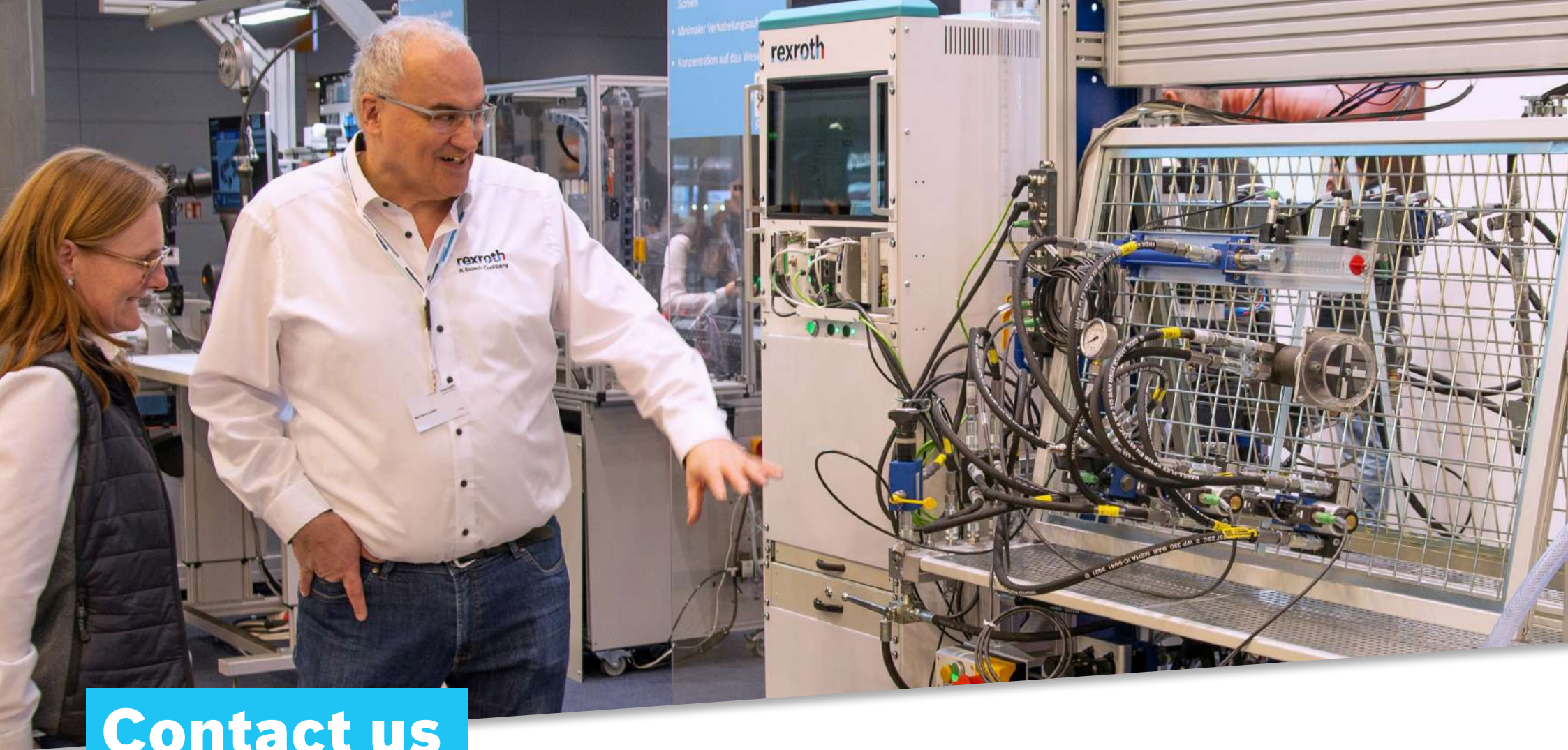
[Rexroth store](#)

Accompanying training courses:

[Training course finder](#)

Enquiry for a concrete offer:

training@boschrexroth.de



Contact us

**Do you have any other questions
about our training systems?**

We would be happy to advise you.

+49 9352 18-19 20
training@boschrexroth.de

CONTACT FORM