
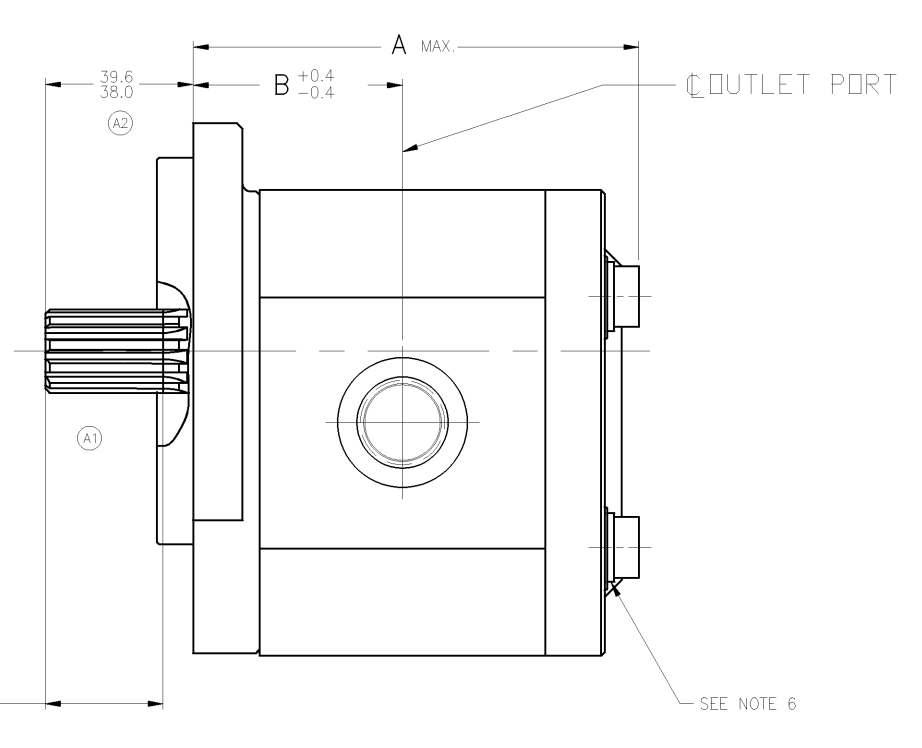
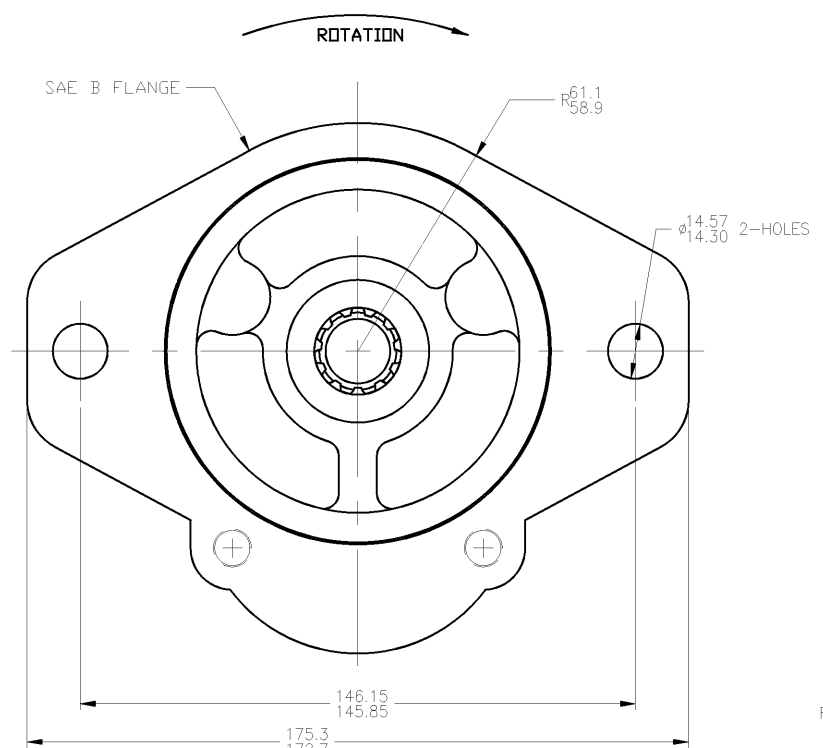
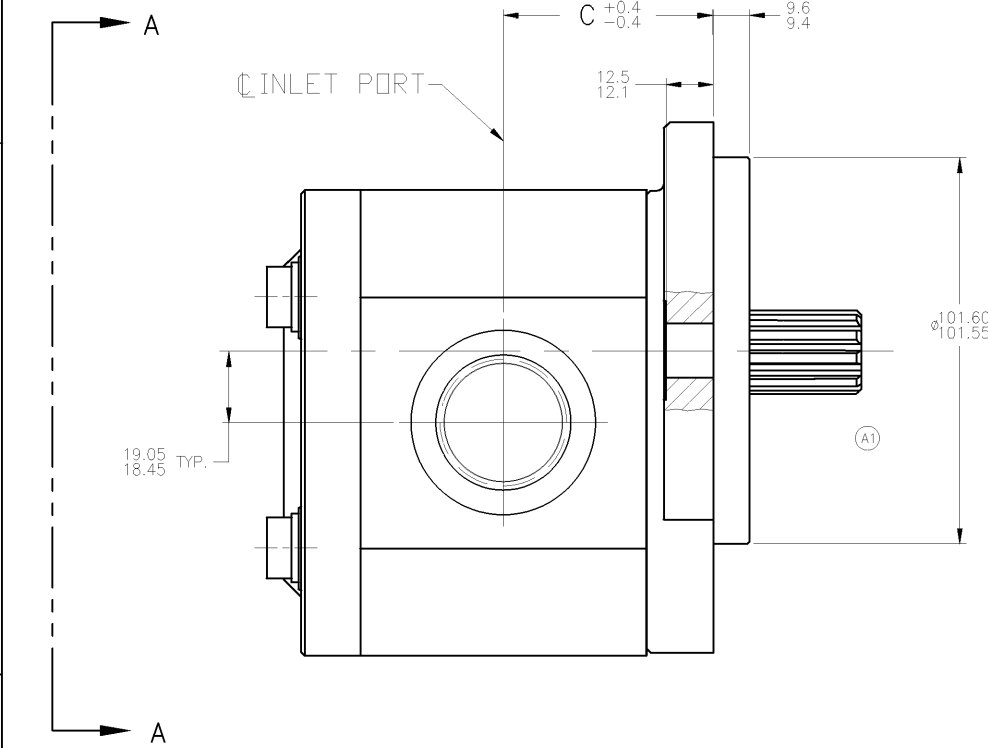


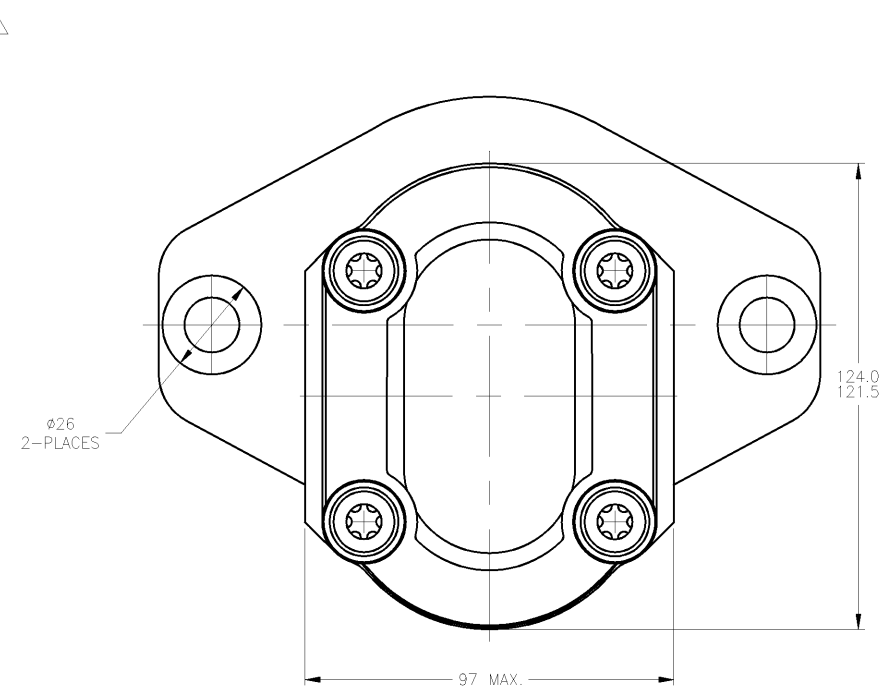
8		7		6			5	4	3	2	1		
MODEL NUMBER	CATALOG NUMBER	DISPLACEMENT	OUTPUT FLOW 	A DIM.	B DIM.	C DIM.	INLET PORT (SAE O-RING BOSS)	OUTLET PORT (SAE O-RING BOSS)					
		CM³/REV	LITERS/MIN										
9510390001	AZ-P-N-12-020-RDC12MB	20.45	39.3	109.8	52.1	52.1	1.312-12 UN-2B THD.	.875-14 UNF-2B THD.					
9510390002	AZ-P-N-12-022-RDC12MB	23.11	44.7	114.7	53.6	53.6							
9510390003	AZ-P-N-12-025-RDC12MB	25.78	49.9	115.8	55.1	55.1	1.625-12 UN-2B THD.	1.062-12 UN-2B THD.					
9510390004	AZ-P-N-12-028-RDC12MB	28.45	55.0	118.8	56.6	56.6							
9510390005	AZ-P-N-12-032-RDC12MB	32.45	62.5	123.3	58.8	58.8							
9510390006	AZ-P-N-12-036-RDC12MB	36.45	70.0	129.7	61.1	61.1							



REV	DESCRIPTION	DATE	BY	CHK
	RELEASE TO PRODUCTION (CRR0535)	06-09-03	D.M.	D.N.
A	1) PICTORIAL CHANGE TO REFLECT NEW SHAFT LENGTHS. 2) CHANGED SHAFT EXT. DIM WAS 31.2/30.5 3) CHANGED MIN FULL SPLINE LENGTH WAS 22.4 4) CHANGED SPLINE CLASS TO CLASS 1. (CRR1301)	05-27-05	GTM	GRJ



EXTERNAL INVOLUTE SPLINE DATA
FLAT ROOT SIDE FIT-CLASS 1

NO. OF TEETH	13
SPLINE PITCH	16/32
PRESSURE ANGLE	30°
BASE DIA.	.70365 (REF)
PITCH DIA.	.81250 (REF)
MAJOR DIA.	.8535-.8585
FORM DIA.	.7493
CIRCULAR TOOTH THICKNESS	
MAX. EFFECTIVE	.0967
MIN. ACTUAL	.0940



- GENERAL NOTES:
- METRIC LINEAR MEASUREMENTS ARE IN MILLIMETERS
 - ROTATION VIEWING DRIVE END: CLOCKWISE
 -  OUTPUT FLOWS ARE AT 2000 RPM & 138 BAR USING SAE NO. 10 OIL AT 48°C
 - MAX RATED SPEED: UP TO 3500 RPM
 -  EXTERNAL INVOLUTE SPLINE DATA IN DECIMAL INCHES
 - LOCKWASHER REQUIRED IN INSTALLATION 9510390002 & 9510390006.

DO NOT SCALE UNLESS OTHERWISE SPECIFIED: LINEAR DIMENSION TOL. 0- 6= 30= 30- 120= 120- 400= 400-1000= ANGLES =	ORIGINATOR GRJ	DATE 3-5-03	DESCRIPTION PUMP-GEAR, INSTALLATION	SCALE FULL
	DATE 10-09-03	DATE 10-09-03	TITLE PUMP-GEAR, INSTALLATION	
	REV. A	DATE 10-09-03	DESCRIPTION PUMP-GEAR, INSTALLATION	
	REV. A	DATE 10-09-03	DESCRIPTION PUMP-GEAR, INSTALLATION	

ALL PROPRIETARY RIGHTS IN THE SUBJECT MATTER HEREOF ARE RESERVED, AND NO PERMISSION IS GRANTED TO REPRODUCE THIS PRINT IN WHOLE OR PART, OR TO DISCLOSE ANY OF THE INFORMATION UPON IT TO OTHERS.

Rexroth
Bosch Group
WOOSTER, OHIO 44691