

Stop gate VE 2/D250-H



- ▶ Pneumatic stop gate
- ▶ For central separation of the workpiece pallets WT 2/H and WT 2/F-H
- ▶ Suitable for accumulation loads up to 2250 kg
- ▶ Continuously adjustable damping
- ▶ Optimal damping for total weights up to 250 kg
- ▶ Can be combined with WT 2/H and WT 2/F-H

Notice: Combination with WT 2/LS not possible.

Dampened stopping of the first accumulating workpiece pallet. The stop gate stops one or more accumulating workpiece pallets at the defined stop surface of the workpiece pallet stop surface. For central separation, the

stop gate is mounted inside the tracks on the conveyor section using the supplied cross connectors. When the pressure is released, the stop gate is held in the lock position by a spring and the workpiece pallet is stopped.

Recommended accessories

- ▶ Return stop VE 2/RS-H (3842549698, 3842549696)

Scope of delivery

- ▶ Incl. all fastening material to mount on the conveyor section ST 2/...

Condition on delivery

- ▶ Not assembled

Ordering information

Material number		3842998748
b (mm)	Track width	400; 480; 640; 800; 1040; 1200
b (mm)	Track width	400 ... 1200 ¹⁾

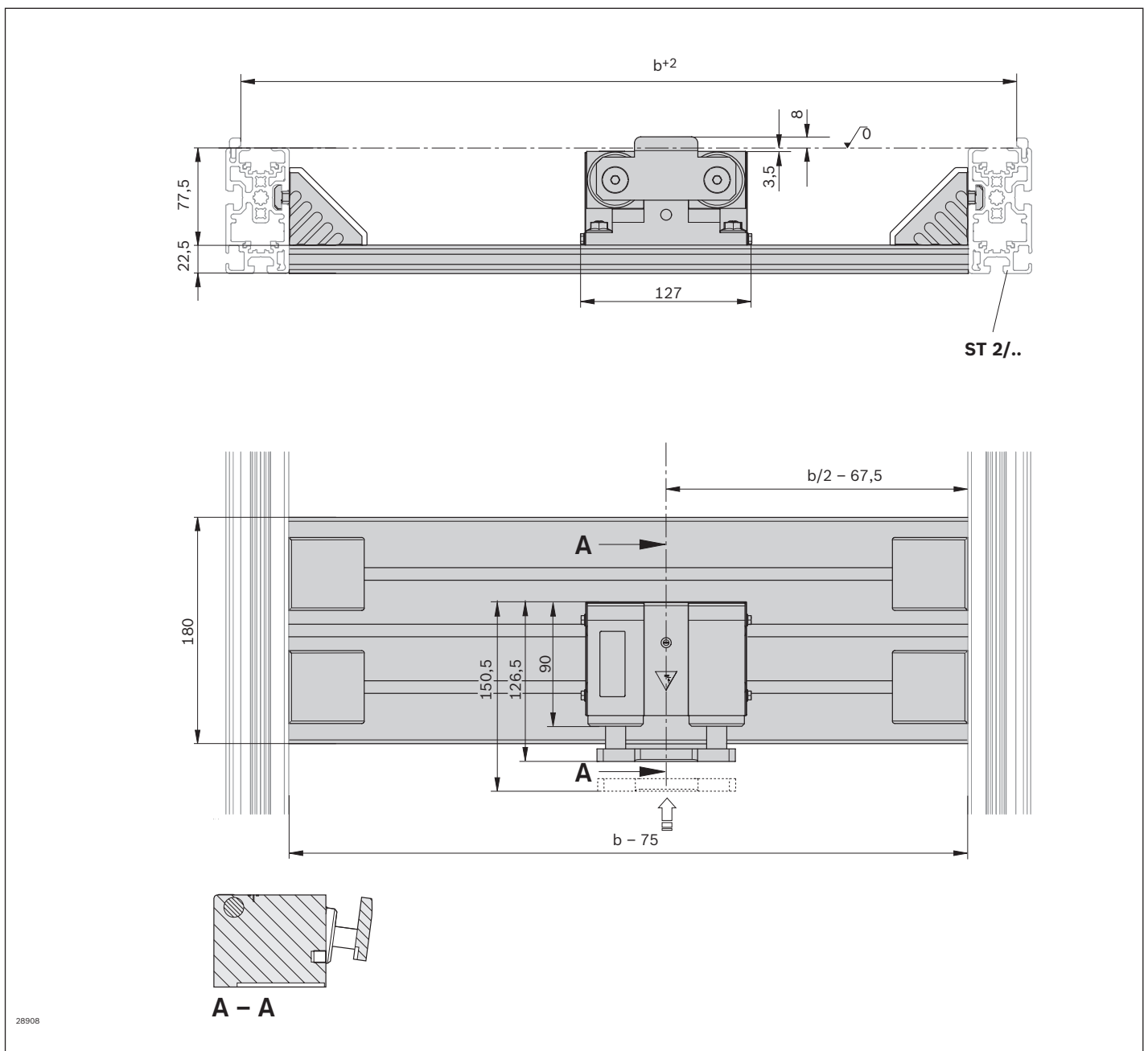
¹⁾ Individual width variants possible

Technical data

Material number			3842998748
Max. total workpiece pallet weight	m_G	kg	250
Min. workpiece pallet weight	m	kg	5
ESD			Yes
Material specification			Housing: Steel; coated Stop cam: Steel; coated Cross strut: Aluminum, natural; anodized
Operating temperature ¹⁾		°C	0 ... +60

¹⁾ High-temperature stop gate on request

Dimensions

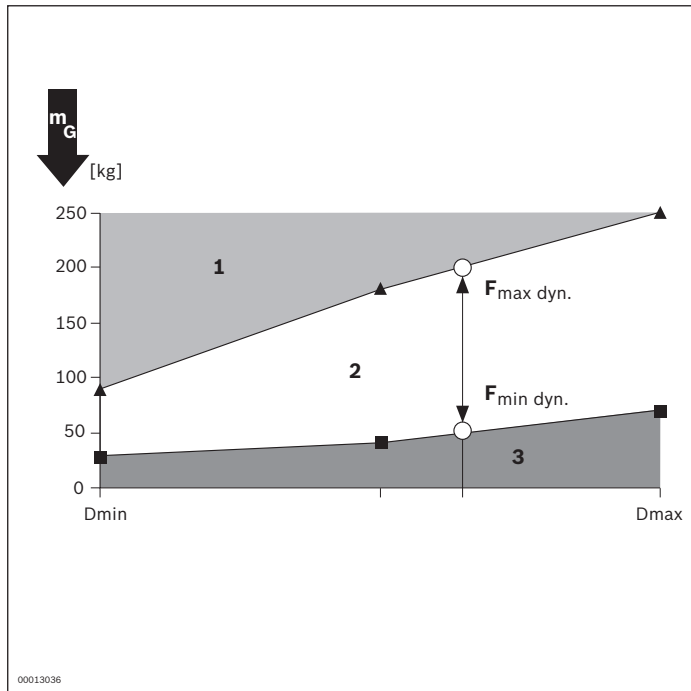


0 Transport level

The data specified above only serves to describe the product. Due to the continuing development of our products, no statements concerning a certain condition or suitability for a certain application can be derived from our information. The information given does not exempt the user from the obligation of own judgment and verification. It must be remembered that our products are subject to a natural process of wear and aging.

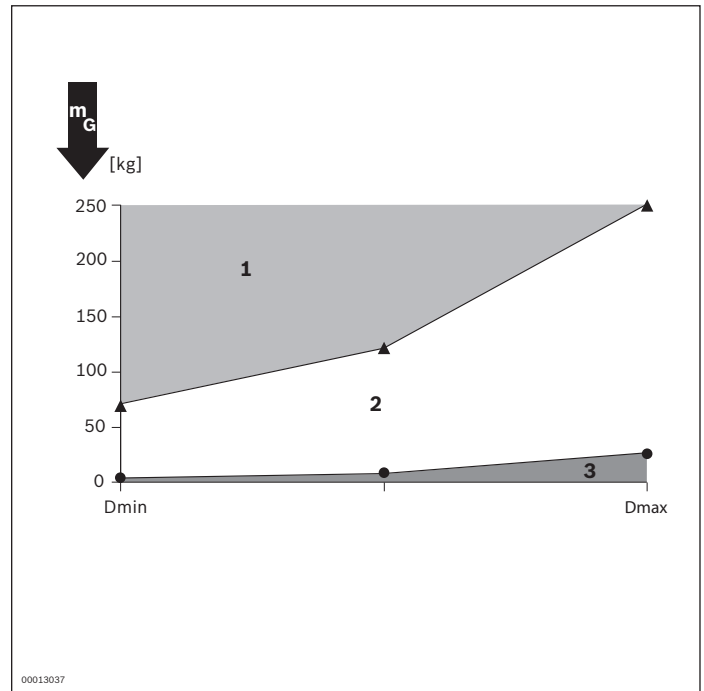
Characteristic curve diagram

Damping setting, accumulation roller chain $\mu = 0.02$



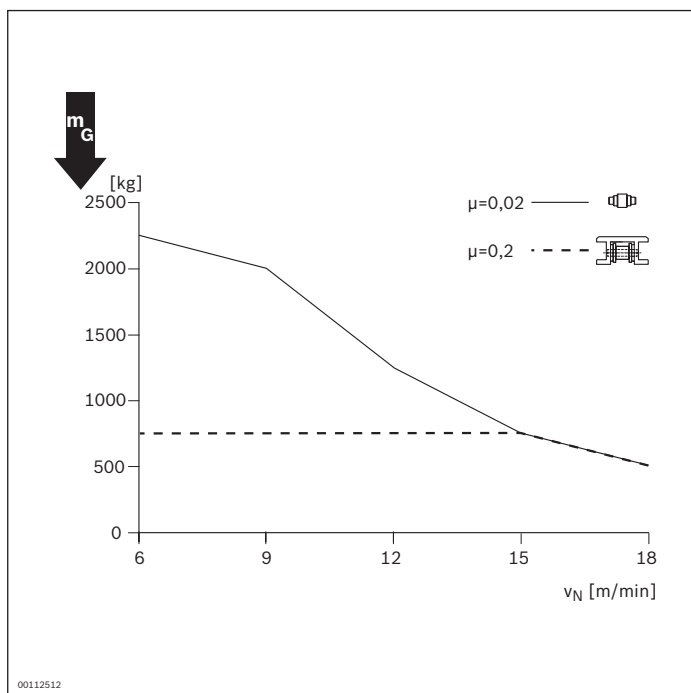
- 1 Damping effect limited, use of a return stop
VE 2/RS-H recommended
 - 2 Recommended range
 - 3 Not possible
- Dmax/min damping setting

Damping setting, flat-top chain $\mu = 0.2$

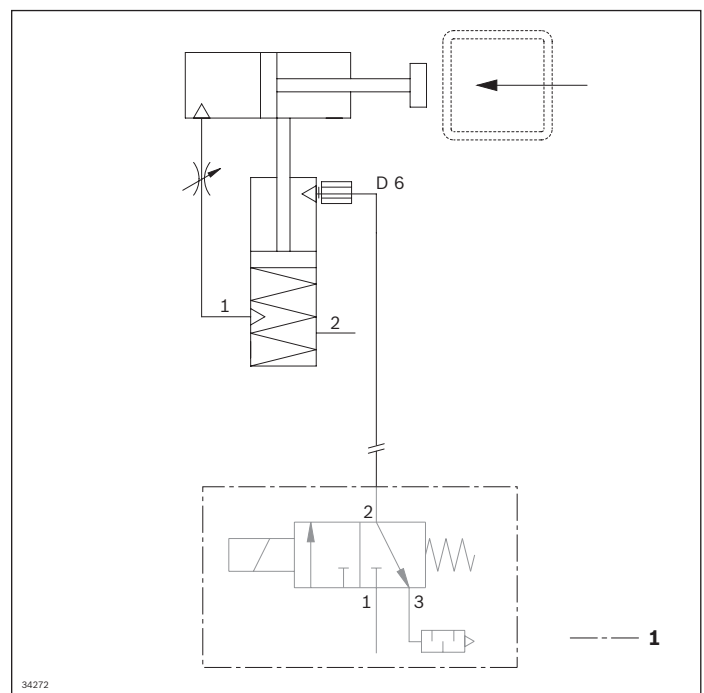


- 1 Damping effect limited, use of a return stop
VE 2/RS-H recommended
 - 2 Recommended range
 - 3 Not possible
- Dmax/min damping setting

Max. permitted section load



Circuit diagram



1 Not included in the scope of delivery

The data specified above only serves to describe the product. Due to the continuing development of our products, no statements concerning a certain condition or suitability for a certain application can be derived from our information. The information given does not exempt the user from the obligation of own judgment and verification. It must be remembered that our products are subject to a natural process of wear and aging.