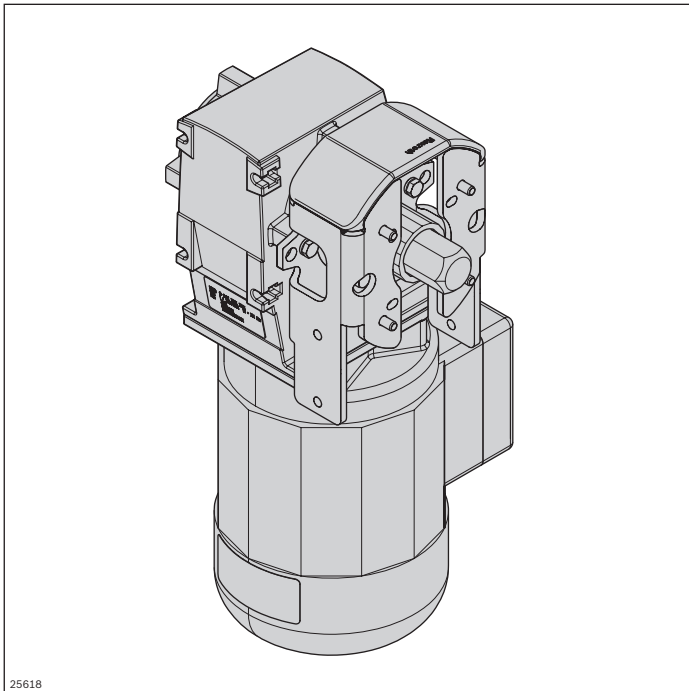


Drive kit



Required accessories:

- Motor leg sets, see p. 191

Optional accessories:

- Frequency converter, see p. 171

Scope of delivery:

- Incl. fastening material
- Incl. flange, shaft and gear motor (GM = 1)

Condition on delivery:

- Kit

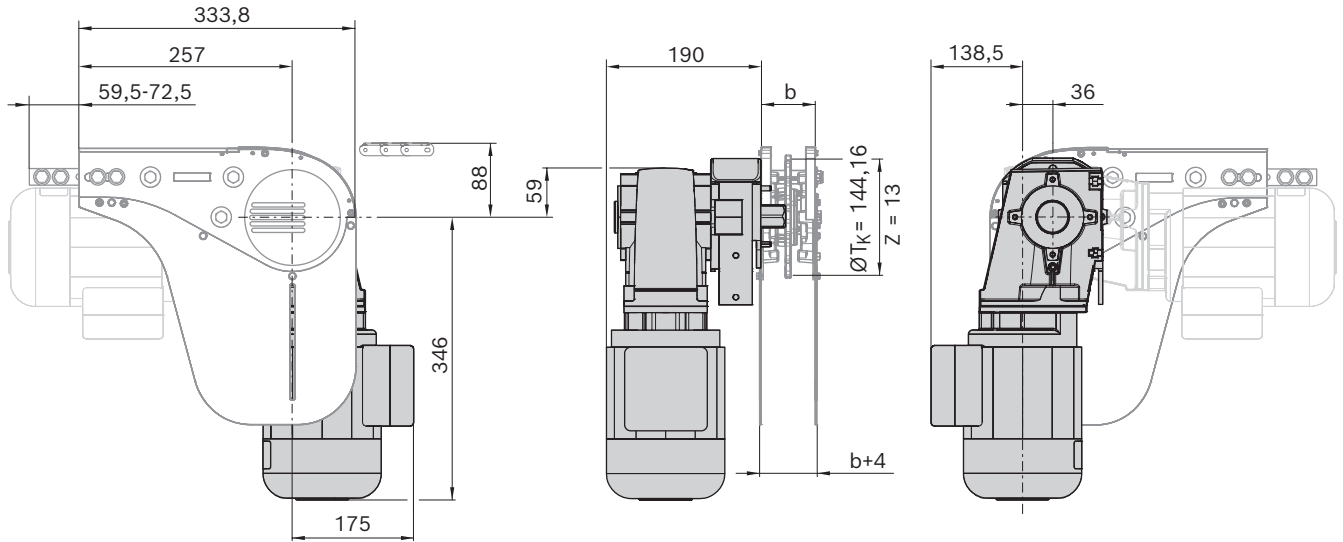
Material:

- Flange, shaft: Non-rusting steel 1.4301
- Motor: Diecast aluminum
- Cover tube: PE

The drive kit is designed to operate the basic head drive unit. It contains a flange for attaching the motor to the basic unit, a hexagonal shaft for transmission of force, as well as other optional equipment features.

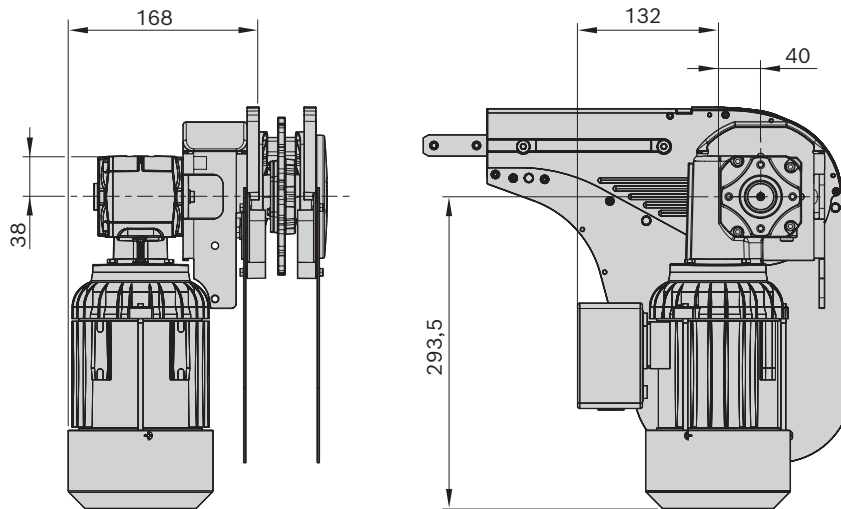
- Versions in aluminum (SP = AL) or stainless steel (SP = STS)
- With Lenze gear motor (GM = 1) or with an interface for attaching an SEW SA47 gear motor (GM = 2).
An adaptation by the customer is required for attaching other gear motors (GM = 0)
- In order to ensure a compact installation situation, smaller and lighter gear motors (GM = 3) or an interface for the installation of an SEW SA37 gear motor (GM = 4) are available for applications with low load
- Fixed or adjustable speed (v_N). For an adjustable speed, gear motors must be retrofitted with an FU (frequency converter), see p. 171
- Different voltages and line frequencies (U/f)
- Connections are made using terminal boxes (AT = K) or plugs (AT = S)
- GM = 1 without surface and corrosion protection

Notice: If third-party motors (GM = 0, GM = 2) are used, support directly on the motor may be required (to avoid twisting).

SP = STS, GM = 1


38394

b = size

STS GM = 3


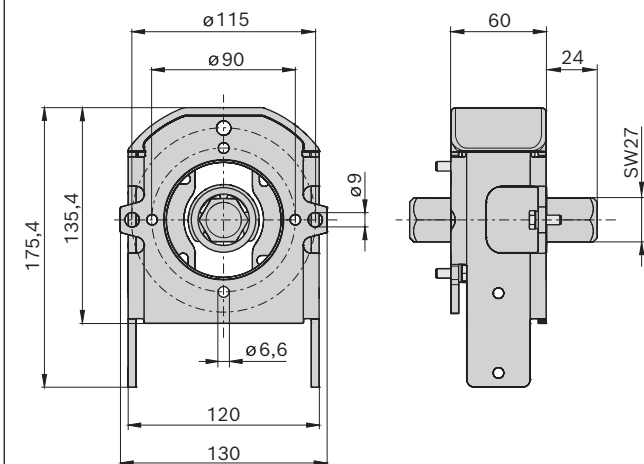
34700

Drive kit VFplus	SP	GM	v_N (m/min)**	U/f (V/Hz) See p. 317	AT	No.
	STS; AL *	0: 1; 2; 3; 4	5, 10, 13, 16, 21, 27, 33, 40, 50		K; S	3 842 998 291 SP = ... GM = ... v_N = ... U/f = ... AT = ...

* AL version see p. 92

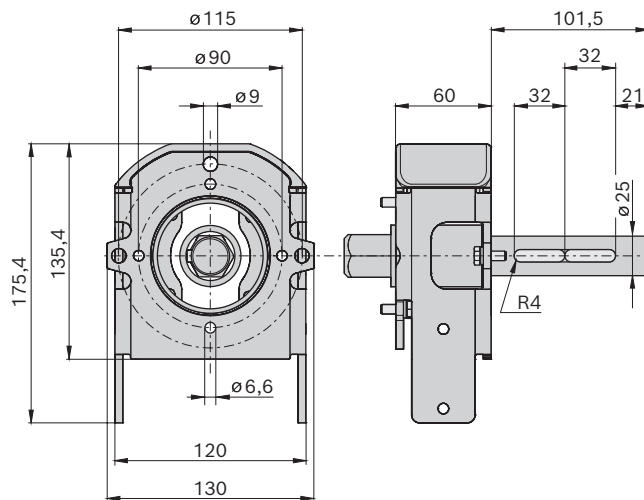
 ** V_N 60-120 on request

STS GM = 0



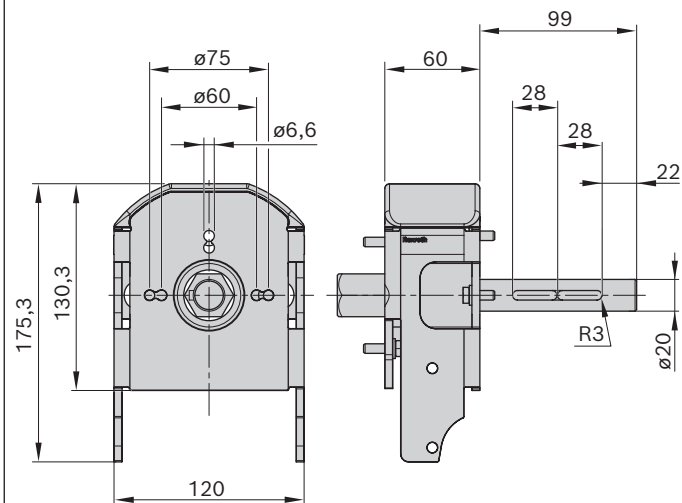
25603

STS GM = 2



25604

STS GM = 4



34701