

CytroBox Commissioning Wizard

CytroBox – Commissioning Wizard

Introduction

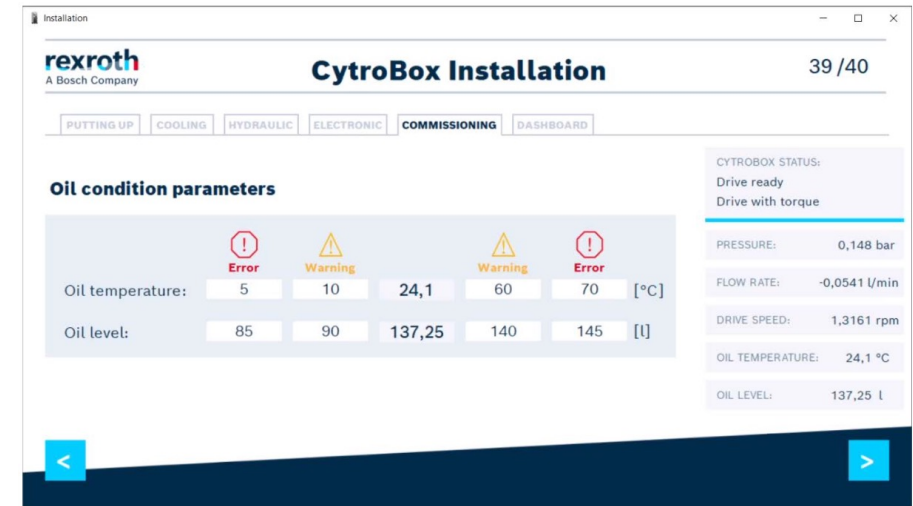
- With this Commissioning Tool we are starting a new era of commissioning electro-hydraulic systems
- This tool contains all needed information of the user manual and IndraWorks to make commissioning as easy and comfortable as possible
- To commission your CytroBox please start the tool and click on “Installation”. The software will guide you step-by-step through the process.
- The “Service Mode” contains additional parameters, which are usually not necessary for commissioning.
- Additional functions can also be used in the Service Mode, such as saving and loading parameter files or starting the drive



CytroBox – Commissioning Tool

Advantages

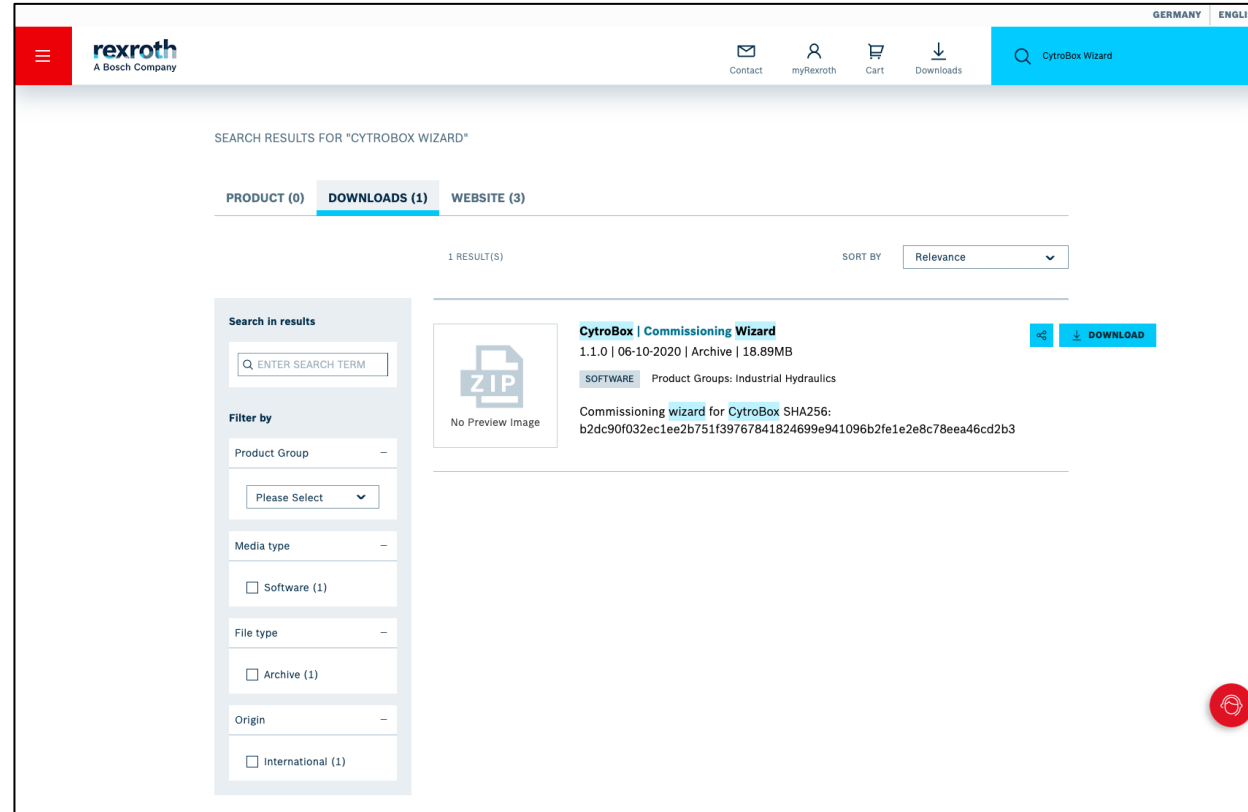
- Guided step-by-step instruction with all relevant information at the right time
- Default parameter values with safety relevant limits to personalize the CytroBox without exceeding risky areas
- Automatic bleeding of the drive to remove oxygen in the hydraulic oil during initial start-up
- Guided setting of the pressure relief valve with detailed instruction
- Documentation of successful installation
- Working on all computers with Windows 7 or higher; 512mb RAM; 1GHz processor; 60mb disk space
- Connection via LAN cable to CytroBox necessary



CytroBox – Commissioning Tool

Installation Instruction

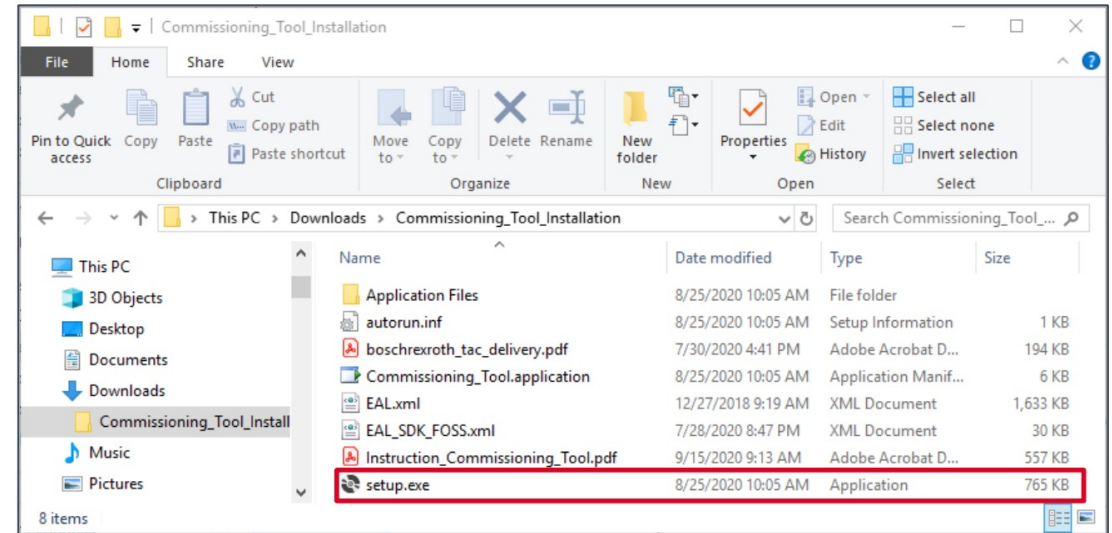
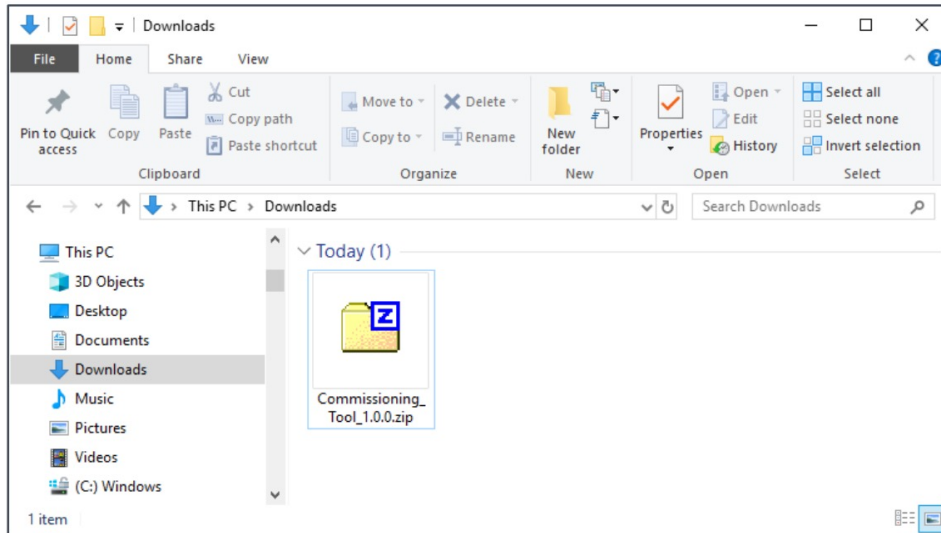
- Download from official Bosch Rexroth Website ([Link](#))



CytroBox – Commissioning Wizard

Installation Instruction

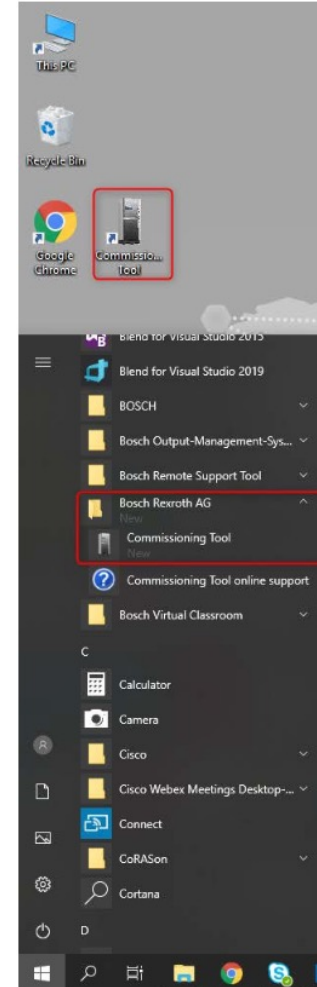
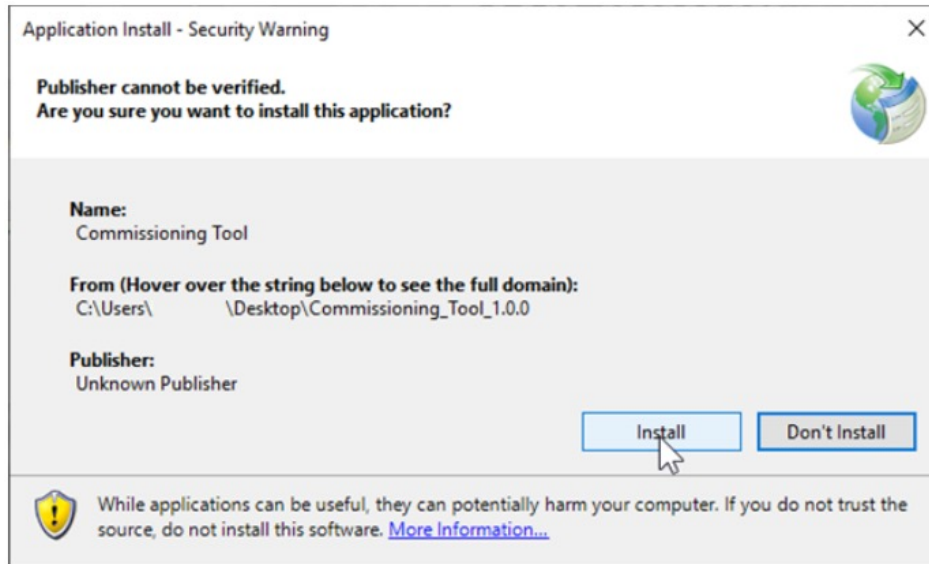
- Unzip the downloaded archive and start „setup.exe“



CytroBox – Commissioning Wizard

Installation Instruction

- Click „Install“ and the wizard automatically installs the software, creates a desktop short-cut and adds a startmenu reference



CytroBox – Commissioning Wizard

Uninstall

- To uninstall the Commissioning Tool open the windows settings and click „Apps“. In the list, select „Commissioning Tool“ and click „Uninstall“

