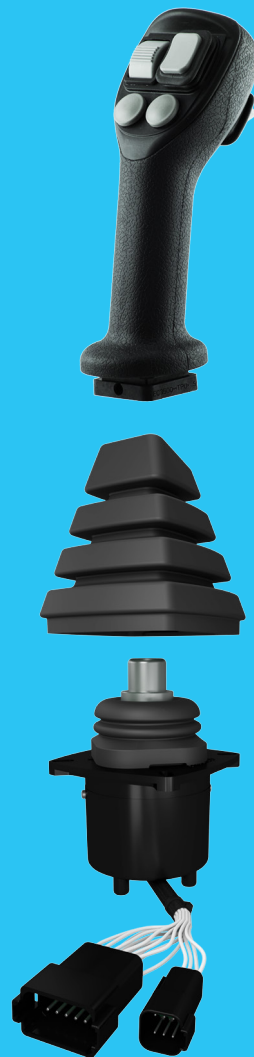


Electronic joysticks and control grips

4THE5, EC



© Bosch Rexroth AG 2021. All rights reserved, also regarding any disposal, exploitation, reproduction, editing, distribution, as well as in the event of applications for industrial property rights.

The data specified within only serves to describe the product. No statements concerning a certain condition or suitability for a certain application can be derived from our information. The information given does not release the user from the obligation of own judgment and verification. It must be remembered that our products are subject to a natural process of wear and aging.

The cover shows an example application. The product delivered may differ from the image on the cover.

The original instruction manual was created in the English language.

Contents

1	About this documentation	4
1.1	Validity of the documentation.....	4
1.2	Required and supplementary documentation	4
1.3	Representation of information	5
1.3.1	Safety instructions	5
1.3.2	Symbols	5
1.3.3	Designations	6
1.3.4	Abbreviations	6
2	Safety instructions	7
2.1	About this chapter.....	7
2.2	Intended use	7
2.3	Improper use	8
2.4	Personnel qualifications	8
2.5	General safety instructions.....	9
2.6	Product-specific safety instructions	10
2.7	Personal protective equipment.....	10
3	General instructions on property damage and product damage	11
4	Scope of delivery.....	12
5	About this product	13
5.1	Product description.....	13
5.2	Product identification	14
6	Transport and storage	15
6.1	Storing the joystick.....	15
7	Installation.....	16
7.1	Unpacking	16
7.2	Installation conditions.....	16
7.3	Installing the joystick	16
7.3.1	Preparation	16
7.3.2	General instructions.....	16
7.3.3	Installation	17
7.3.4	Notice on wiring and circuitry.....	17
7.3.5	Electrically connecting the joystick.....	18
8	Commissioning.....	19
9	Operation	19
10	Maintenance and repair	19
10.1	Cleaning and care	19
10.2	Inspection and maintenance.....	20
10.3	Repair	20
11	Removal and replacement	20
12	Disposal	20
13	Extension and conversion.....	20
14	Troubleshooting	21
14.1	Malfunction table	21
15	Technical data	22
16	Alphabetical index	23

1 About this documentation

1.1 Validity of the documentation

This documentation is valid for the following product:

- Electronic joystick 4THE5 series 41 and 42 (CAN PLc, CAN PLd, Analog, PWM)
- Ergonomic control grips EC4000, EC 3500+, EC3000+, EC2000+, EC2000, EC1000+

This documentation is intended for machine/system manufacturers, assemblers and service engineers.

This documentation contains important information on the safe and proper transport, installation, commissioning, operation, maintenance, disassembly and simple troubleshooting of the product.

- Read this documentation completely, in particular chapter 2 "Safety instructions" on page 7 and chapter 3 "General instructions on property damage and product damage" on page 11 before you start working with the product.

1.2 Required and supplementary documentation




- Only commission the product if the documentation marked with the book symbol  is available to you and you have understood and observed it.

Table 1: Required and supplementary documentation

Title	Document number	Document type
<div>  Electronic joystick 4THE5 </div> <div> <div>– CAN version, series 41</div> <div>– CAN version, series 42</div> <div>– Analog & PWM version</div> </div> <div> Contains the permissible technical data, product description and main dimensions. </div>	<div>29696</div> <div>29699</div> <div>29697</div>	Data sheet
<div>  Ergonomic control grip </div> <div> <div>– Sense+</div> <div>– EC4000</div> <div>– EC3500+</div> <div>– EC3000+</div> <div>– EC2000+</div> <div>– EC2000</div> <div>– EC1000+</div> </div> <div> Contains the configuration options and main dimensions. </div>	<div>64092</div> <div>64091</div> <div>64090</div> <div>64089</div> <div>64088</div> <div>64087</div> <div>64086</div>	Data sheet

1.3 Representation of information

Uniform safety instructions, symbols, terms and abbreviations are used throughout this documentation to ensure safe and proper use of the product. For clarification, they are explained in the sections below.

1.3.1 Safety instructions





This documentation contains safety instructions in chapter 2.6 "Product-specific safety instructions" on page 10 and in chapter 3 "General instructions on property damage and product damage" on page 11, as well as before a sequence of actions or an instruction for action involving a risk of personal injury and property damage. Always follow the measures for danger prevention associated with the use of this product.

Safety instructions are set out as follows:

 SIGNAL WORD
Type and source of danger! Consequences of noncompliance ► Danger prevention measures

- **Warning sign:** draws attention to the danger
- **Signal word:** identifies the degree of the danger
- **Type and source of danger:** indicates the type and source of the danger
- **Consequences:** describes what occurs if safety instructions are disregarded
- **Precautions:** states how the danger can be avoided


Table 2: Hazard classes as defined in ANSI Z535.6

Warning sign, signal word	Meaning
 DANGER	Identifies a dangerous situation that will result in death or serious injury if it is not avoided.
 WARNING	Identifies a dangerous situation that may result in death or serious injury if it is not avoided.
 CAUTION	Identifies a dangerous situation that may result in minor to moderate injury if it is not avoided.
 NOTICE	Property damage: The product or surrounding area may be damaged.

1.3.2 Symbols

The following symbols indicate notices that are not safety-relevant but increase understanding of the documentation.

Table 3: Meaning of symbols

Symbol	Meaning
	If this information is disregarded, the product cannot be used and/or operated to its full extent.
►	Single, independent action
1.	Numbered instruction:
2.	The numbers indicate that the actions must be completed in order.
3.	

1.3.3 Designations

This documentation uses the following designations:

Table 4: Designations

Designation	Meaning
4THE5	Electronic joystick
EC...	Ergonomic control grip

As a generic term for the "Electronic joystick 4THE5" and the “Ergonomic control grips EC...”, the designation "product" or "joystick" will be used in the following.

1.3.4 Abbreviations

This documentation uses the following abbreviations:

Table 5: Abbreviations

Abbreviation	Meaning
ANSI	A merican N ational S tandards I nstitute is an organization that coordinates the development of voluntary standards in the United States
CAN	C ontroller A rea N etwork
EMC	E lectromagnetic compatibility
ESD	E lectrostatic discharge
PWM	P ulse W idth M odulation

2 Safety instructions

2.1 About this chapter

The product has been manufactured in accordance with generally accepted engineering standards. There is still, however, a danger of personal injury or property damage if this chapter and the safety instructions in this documentation are not observed.

- ▶ Read this documentation completely and thoroughly before working with the product.
- ▶ Keep this documentation in a location where it is accessible to all users at all times.
- ▶ Always include the required documentation when passing the product on to third parties.

2.2 Intended use

The joystick is intended as a component for application in mobile working machines. It is used to detect actuations from the driver (proportional and On/Off actuations).

The joystick may only be commissioned after it has been installed in the machine/system for which it is intended and the safety of the entire system has been established in accordance with the Machinery Directive.

- ▶ Generally, the joystick must be operated within the operating ranges specified and approved in the data sheet, particularly with regard to voltage, temperature, vibration, shock and other described environmental influences.
- ▶ Its use outside of these specified and approved boundary conditions may result in danger to life and/or cause damage to components which could result in sequential damage to the mobile working machine.
- ▶ Serious personal injury and/or damage to property may occur in case of non-compliance with the appropriate regulations.
- ▶ Observe the corresponding IP protection class.

The product is intended only for professional use and not for private use. Intended use includes having fully read and understood this documentation, especially chapter 2 "Safety instructions" on page 7.

2.3 Improper use

Any use other than that described as intended use is considered improper.

Bosch Rexroth AG is not liable for damages resulting from improper use. The user is solely responsible for any risks arising from improper use.

The following foreseeable forms of faulty usage are also considered improper (this list is not exhaustive):

- Use outside the operating parameters approved in the data sheet (unless customer-specific approval has been granted)
- Use of non-approved fluids, e.g. bleach or aggressive cleaning agents
- Use of the joystick under water
- Application of the joystick in explosive environments
- Use of the joystick in a corrosive atmosphere

2.4 Personnel qualifications

The activities described in this documentation require basic mechanical, electronical/electrical and hydraulic knowledge, as well as knowledge of the associated technical terms. In order to ensure safe use, these activities should only be performed by skilled personnel or an instructed person under the direction and supervision of skilled personnel.

Skilled personnel refers to persons who possess the professional training, knowledge and experience, as well as the understanding of the regulations relevant to the work to be done that are necessary to recognize possible dangers and take the appropriate safety measures. Skilled personnel must follow the rules relevant to their field and have the necessary expert knowledge of mechatronics, electronics and hydraulics, if applicable.

Expert knowledge means, for instance:

- Being able to read and fully understand electrical circuit diagrams and hydraulic diagrams, if applicable,
- in particular, fully understanding the relationships with regard to safety devices,
- as well as to carry out the wiring of electronic components correctly and
- to have knowledge of the function and interaction of electronic, mechanical and hydraulic components.

Only trained and experienced specialists who are adequately familiar with both the components used and the complete system should implement system developments or install and commission electronic systems for controlling hydraulic drives.



Bosch Rexroth offers you measures supporting training in specific areas.

You can find an overview of the training contents on the Internet at:

www.boschrexroth.com/training.

2.5 General safety instructions

- Observe country-specific accident prevention and environmental protection regulations.
- Observe the safety regulations of the country in which the product is used/operated.
- Use Rexroth products only when they are in good working order.
- Do not install, operate, disassemble or maintain Rexroth products if under the influence of alcohol, drugs or medication that may affect your reaction time.
- Only use approved accessories and original spare parts from Rexroth in order to exclude hazards to persons due to unsuitable spare parts.
- Observe the technical data and ambient conditions specified in the product documentation.
- If unsuitable products are installed or used in applications that are of relevance to safety, unexpected operating conditions may occur in the application, which could result in personal injury or property damage. For this reason, only use the product in safety-relevant applications if this use is expressly indicated and approved in the product documentation, e.g. in safety-related parts of a control system (functional safety).
- Only commission the product if it has been determined that the end product (e.g. machinery/system) in which the Rexroth products are installed complies with the country-specific provisions, safety regulations and standards for the application.
- Use tools appropriate for the work being performed and wear appropriate protective clothing to prevent punctures and cuts (e.g. when removing protective covers, disassembly).
- The proposed circuits do not imply any technical liability for the system on the part of Bosch Rexroth.
- Opening the joystick or carrying out modifications to or repairs on the joystick is prohibited. Modifications to or repairs on the wiring can lead to dangerous malfunctions.
- The joystick may only be installed/disassembled in a de-energized and depressurized state.
- Make sure that nobody is in the machine's danger zone.
- Do not use defective components or components which are not in a proper working order. If the joystick fails or demonstrates a faulty operation, it must be replaced.
- Despite the greatest care being taken when compiling this document, it is not possible to consider all feasible applications. If notices for your specific application are missing, please contact Bosch Rexroth.

2.6 Product-specific safety instructions

The following safety instructions apply to chapters 6 to 14.



WARNING

System/machine under pressure!

Risk of death or serious injury when working on unsecured machines/systems!

Property damage!

- ▶ Switch off the relevant machine/system part and secure it against reactivation according to the parameters by the machine/system manufacturer.
- ▶ Ensure that all relevant components of the hydraulic system are depressurized. For this purpose, observe the parameters indicated by the machine/system manufacturer.
- ▶ Please note that the hydraulic system might still be pressurized even after separation from the actual pressure supply.
- ▶ Do not disconnect any line connections, ports and components as long as the hydraulic system is under pressure.

Electrical voltage!

Danger to life or risk of injury due to electric shock or property damage!

- ▶ Always disconnect the voltage supply to the relevant machine/system part before installing the product and/or connecting or disconnecting the connector.
- ▶ Protect the machine/system against being re-energized.



CAUTION

Improper cable and line routing!

Risk of stumbling and property damage! Improper routing of cables and lines can cause a risk of stumbling as well as damage to equipment and components, e.g. due to lines and connectors being torn off.

- ▶ Always install cables and lines in a way that nobody can fall over them, that they are not bend or twisted, do not chafe on edges and are not guided through ducts with sharp edges without sufficient protection.

Danger due to malfunctions!

Risk of injury and property damage as well as machine damage due to malfunctions of the joystick!

- ▶ Carry out a risk assessment of your machine and determine the possible safety-relevant functions.
- ▶ Take suitable measures to ensure safety in applications relevant to safety, e.g. joystick redundancy, plausibility check, emergency switch, etc.
- ▶ Product data that is required for the safety assessment of the machine is included in the data sheet.

2.7 Personal protective equipment

The personal protective equipment is the responsibility of the user of the product. Observe the safety regulations in your country.

All pieces of personal protective equipment should be intact.

3 General instructions on property damage and product damage

The following notices apply to chapters 6 to 14.

NOTICE

Danger from improper handling!

Product can be damaged!

- ▶ Do not expose the product to any mechanical, hydraulic or electric loads under any circumstances.
- ▶ Never use the product as step.
- ▶ Do not put/place any objects on the product.
- ▶ Do not use sensitive assembled parts (e.g. harness or connector) for transporting the joystick.
- ▶ Carefully place the joystick onto the contact surface to prevent it from being damaged and secure it against falling.
- ▶ Do not set/place the joystick onto the actuation elements.
- ▶ Do not hit sensitive assembled parts (e.g. actuation elements).
- ▶ Do not hit sealing surfaces (e.g. on the work ports).
- ▶ Leave the protective covers on the joystick until you connect the lines.
- ▶ Disconnect all electric connectors before any painting or soldering operations on the machine.
- ▶ Ensure that the electronic components (e.g. sensors) are not electro-statically charged (e.g. during painting operations).

Improper cleaning

Product can be damaged!

- ▶ Plug all openings with appropriate protective equipment to prevent cleaning agents from entering the joystick.
- ▶ Never use solvents or aggressive cleaning agents. Clean the joystick using only water and a plastic cleaning agent if necessary.
- ▶ Do not direct the high-pressure cleaner to sensitive components, e.g. joystick base, rubber parts (bellows), electric connections (solenoids, sensors) and actuation elements.
- ▶ Use fibre-free cleaning cloths for cleaning.

Environmental pollution due to incorrect disposal!

Careless disposal of the product and the packaging material could lead to environmental pollution!

- ▶ Dispose of the product and packaging in accordance with the national regulations in your country.

Electrical voltage!

Damage to property due to electrical voltage!

- ▶ Always disconnect the voltage supply to the relevant machine/system part before installing the product and/or connecting or disconnecting the connector. Protect the machine/system against being re-energized.
- ▶ Do not touch the connector pins with a tool or fingers for ESD reasons.

The warranty exclusively applies to the delivered configuration.

The warranty will be voided if the product is incorrectly installed, commissioned or operated, or if it is used or handled improperly.

4 Scope of delivery



Fig. 1: 4THE5 electronic joystick

The scope of delivery is defined by fully assembled joysticks incl. bellows (3) or stand-alone joystick base (1) or control-grip (2).



Multiple type of packaging exist according to the batch size ordered.

5 About this product

5.1 Product description

The 4THE5 joystick is made to be connected to a machine controller (ECU) which will be used as a power control and system logic. The 4THE5 joystick is suitable for the control of mobile machines. Thanks to its modularity, it answers to many configuration of controls, allowing to have an efficient and easy interface with the machine.

Sample applications Thanks to its various type of output, the joystick is compatible with Bosch Rexroth controllers.

Output variants available

- **4THEC5:** CAN joystick for application in safety-related parts of control systems up to PLC, Vbat supply
- **4THED5:** CAN joystick for application in safety-related parts of control systems up to PLd, Vbat supply
- **4THES5:** Analog Ratiometric 5 V joystick, PLd capable
- **4THESW5:** Analog PWM 5 V joystick, PLd capable

5.2 Product identification

Depending on the scope of the order, there are the following different identification options:

Order full joystick or base only

The product can be identified using the material number **(1)** on the label of the base.



Fig. 2: Material number on sticker on the base

Order control grip only

The product can be identified using the material number **(2)** on the label of the body of the control grip.



Fig. 3: Material number on sticker on the control grip



The material number of the control grip can differ from the kit material number as it consists of other parts for assembly (e.g. screws).

6 Transport and storage

Check the joystick for transport damage. If there are obvious signs of damage, please inform the transport company and Bosch Rexroth immediately.

If the joystick is dropped, it is not permissible to use it any longer, as invisible damage could have a negative impact on reliability.

6.1 Storing the joystick

Requirement Storage time: 2 years at an average relative humidity of 60% and a temperature between -20 °C and +40 °C. Short-term for up to 100 hours a storage temperature of -40 °C and +85 °C shall be permissible.

7 Installation

Prior to installation, the following documents should be to hand:

- Data sheet of the product (contains the permissible technical data, main dimensions and installation drawing)

7.1 Unpacking

NOTICE! Danger due to electrostatic discharge!

When unpacking the joystick, there is a danger of damage to the electronic components of the joystick due to electrostatic discharge.

- ▶ During unpacking, the joystick is to be protected against electrostatic discharge.
- ▶ Remove the packaging from the joystick.
- ▶ Check the joystick for transport damage and completeness, see chapter 4 "Scope of delivery" on page 12.
- ▶ Dispose of the packaging in accordance with the regulations in your country.

7.2 Installation conditions

The installation position and position of the joystick essentially determine the procedures for installation and commissioning.

- ▶ Do not install the joystick close to parts that generate considerable heat (e.g. exhaust).
- ▶ Lines are to be routed with sufficient distance from hot or moving vehicle parts.
- ▶ A sufficient distance to radio systems must be maintained.
- ▶ Before electric welding and painting operations, the joystick must be disconnected from the power supply and the joystick connector must be removed.
- ▶ Cables/wires must be equipped with an individual seal to prevent water from entering the connector.

7.3 Installing the joystick

7.3.1 Preparation

1. Use the material number on the sticker of the packaging unit or directly on the product to check whether the correct joystick is available, see chapter 4 "Scope of delivery" on page 12.
2. Compare the material number with the details in the order confirmation.



If the material number of the joystick does not match the one in the order confirmation, contact your local contact person for clarification. You can find their contact information at

www.boschrexroth.com/addresses

7.3.2 General instructions

Please refer to data sheet 29696, 29699 or 29697.

7.3.3 Installation

- 1.** Insert the joystick in the console/armrest with care to prevent damage on the wiring or protection boot.
- 2.** Fasten the joystick using the specified mounting bolt, required tightening torque written on installation drawing (maximum tightening torque 10 Nm).
- 3.** Place the boot in its correct position under the fixation plate for an optimal protection. Note that this boot has no pannel IP relevance.
- 4.** Connect the product with caution regarding the pin-out written on the installation drawing.

7.3.4 Notice on wiring and circuitry

- Lines from the joystick to the electronics must not be routed close to other power-conducting lines in the machine.
- The wiring harness should be mechanically secured in the area in which the joystick is installed.
- If possible, lines should be routed in the machine interior. If the lines are routed outside of the machine, their secure mounting is to be ensured.
- Lines must not be kinked or twisted, must not rub against edges and must not be routed through sharp-edged ducts without protection.

7.3.5 Electrically connecting the joystick

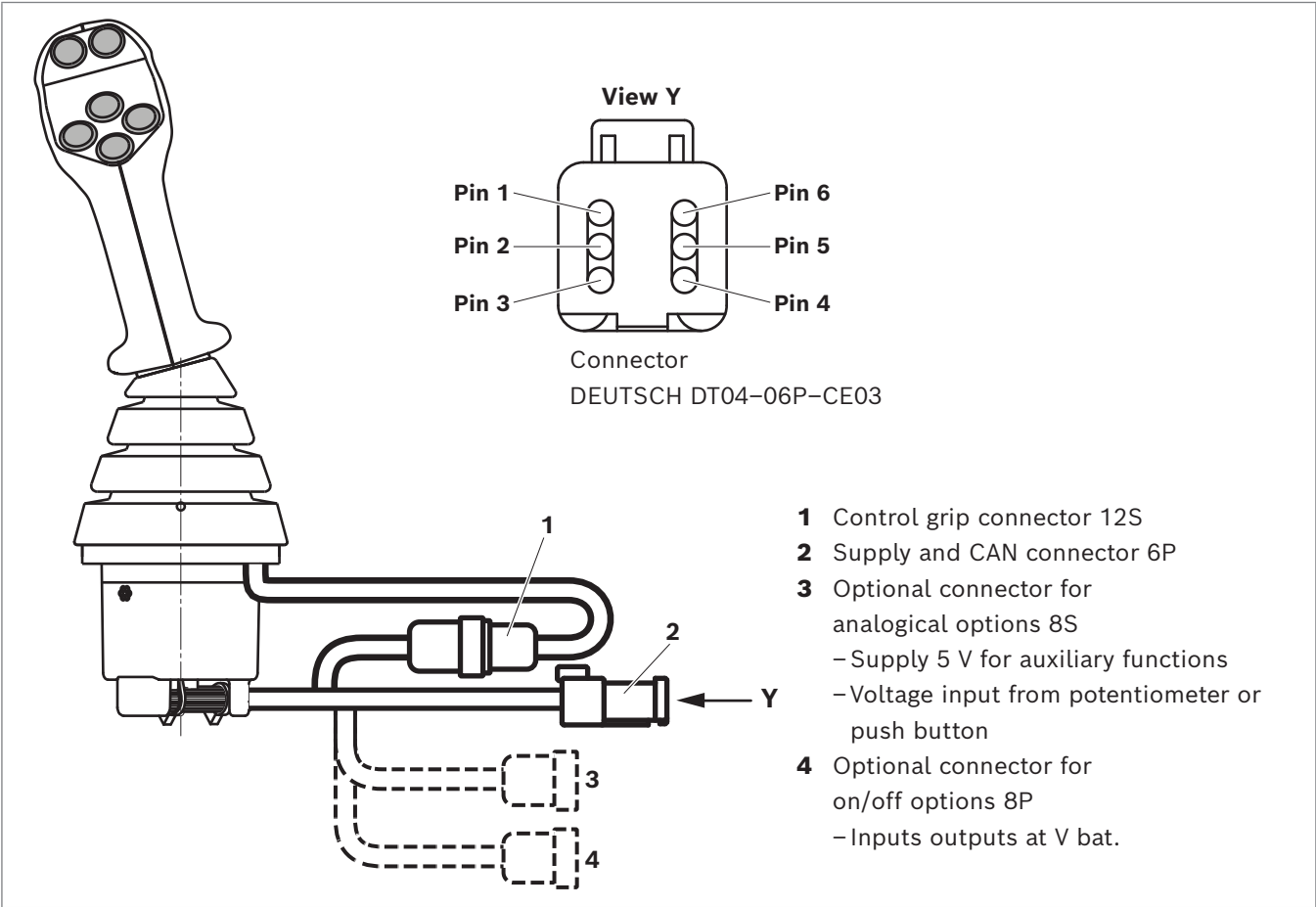


Fig. 4: Pin assignment

Table 6: Pin assignment

Pin	CAN version	PWM version	Analog version
1	V _{Bat}	5 V regulated	5 V regulated
2	GND	GND	GND
3	CAN_IN High	Axis 1 Principal	Axis 1 Principal
4	CAN_IN Low	Axis 1 Redundant	Axis 1 Redundant
5	CAN_OUT High	Axis 2 Principal	Axis 2 Principal
6	CAN_OUT Low	Axis 2 Redundant	Axis 2 Redundant

1. Make sure that the DEUTSCH mating connector is in de-energized condition.
2. Connect the mating connector of the wiring harness to the joystick connector until it engages noticeably and observe the correct plug-in position.
3. The joystick is ready for operation within
 - 1500 ms (CAN version)
 - 5 ms (Analog and PWM version)after the voltage supply is applied.

8 Commissioning



During all work for commissioning the joystick, observe the general safety instructions and intended use detailed in chapter 2 "Safety instructions" from page 7 on.

- ▶ When commissioning the joystick, the machine may pose unforeseen dangers. Before commissioning the system, you must therefore ensure that the vehicle and the hydraulic system are in a safe condition.
- ▶ Commission the machine and check the correct functioning of the joystick (e.g. direction of movement and correct messages or output levels).

9 Operation

This product is a component which requires no settings or changes during operation. For this reason, this chapter of the manual does not contain any information on adjustment options. Use the product only within the performance range specified in the technical data.

10 Maintenance and repair

10.1 Cleaning and care

NOTICE

Damage to bellows, connectors and electronics/electrics due to mechanical effects!

The water jet of a high-pressure cleaner may damage the bellows, connectors and electronics/electrics of the joystick!

- ▶ Do not point the high-pressure cleaner directly towards the joystick.

For cleaning and care of the joystick, observe the following:

- ▶ Check whether all the seals and fittings on the plug-in connections are securely seated to ensure that no moisture can penetrate into the joystick and the installation space during cleaning.
- ▶ Use only water and, if necessary, a mild cleaning agent to clean the joystick. Never use solvents or aggressive cleaning agents.

10.2 Inspection and maintenance

No special activities are necessary.

10.3 Repair

The joystick base, the complete control grip and the large bellow are available as spare parts. The joystick base itself cannot be repaired but only replaced. Control grip components such as push-button, rocker or roller are not serviceable for safety reasons.

- ▶ Only use original spare parts from Rexroth, otherwise the functional reliability cannot be guaranteed, and the warranty will be voided.
- ▶ Spare parts can be found online at www.boschrexroth.com/eshop

Address all questions regarding repair to your responsible Bosch Rexroth service.

11 Removal and replacement

- ▶ Only disassemble the joystick when de-energized and depressurized.

12 Disposal

Careless disposal of the joystick can lead to environmental pollution.

- ▶ Dispose of the joystick and the packaging material in accordance with the national regulations in your country.

13 Extension and conversion

Do not convert the joystick.



The warranty from Bosch Rexroth only applies to the configuration as delivered. Entitlement to warranty cover will be rendered void in case of conversion, extension or a software modification by customer.

14 Troubleshooting

The Table 7 is intended to support troubleshooting. This table is not exhaustive. Issues may occur in practice that are not listed here.



If the electronic CAN joystick is faulty, an error code is emitted. The message containing the error code depends on the protocol used (see data sheet 29696/29699). The description of the error codes is available on request.

14.1 Malfunction table

Table 7: Joystick malfunction table

Malfunction	Occurrence possible			Possible cause	Remedy
	Proto	0 km	Operation		
Joystick does not supply a signal	x	x		Mixing up the connection lines when connecting the joystick to the superior control system.	Check the wiring and/or the wiring harness both at the joystick connector and at the superior control.
	x	x	x	Joystick was mechanically damaged from the outside during operation.	Check the joystick for obvious damage. Replace the product if needed.
	x	x	x	Incorrect or faulty voltage supply: - Joystick supply voltage is missing. - Joystick supply voltage is too low.	Measure the supply voltage at the contacts of the joystick and make sure that all contacts in the mating connector are correctly fitted and latched. Make sure that the mating connector is connected to the joystick until latching.
	x	x	x	Short circuit of the output signals of the joystick by: - Damage to the insulation in the connected wiring harness.	Check the joystick and machine harness for obvious damage. Replace the product if needed.
Joystick supplies incorrect or no signal	(x)	x	x	Humidity has entered the wiring harness or the joystick.	The seals of the wiring harness connector are defective or the cable/joystick has been damaged.
	x			The input resistances RPU and/or RPD of the control unit are either too large (high resistance) or too small (low resistance).	Check whether the joystick is operated within its "operating limits" and make sure that the input resistances and the input capacitances of the connected control unit are within the limits specified in data sheet.
	x	x	x	The ground line of the joystick is not connected to the joystick ground of the control unit. There is a "potential shift" due to different grounds between joystick and higher-level control	Make sure that the ground of the joystick is connected to the respective ground of the control unit with a low resistance. Measure the connection.
			x	The joystick EMC environment exceed the values stated in the data sheet.	Stop the machine.

15 Technical data

The permissible technical data of the joystick can be found in data sheet 29696, 29699 or 29697.



The data sheet can be found in the online product catalog at
www.boschrexroth.com/p-THE5

16 Alphabetical index

A

Abbreviations	6
Assembling	16

C

Care	19
Cleaning	19
Commissioning	19
Connection	
electric	18
Conversion	20

D

Designations	6
Disassembly	20
Disposal	20

I

Identification	14
Inspection	20
Installation	16
Preparation	16
Installation conditions	16
Intended use	7

M

Maintenance	19, 20
-------------------	--------

O

Operation	19
-----------------	----

P

Product description	13
Property damage	11

Q

Qualification	8
---------------------	---

R

Repair	20
Replacement	20
Required documentation	4

S

Safety instructions	7
General	9
Product-specific	10
Signal word	5
Scope of delivery	12
Storage	15
Symbols	5

T

Technical data	22
Transport	15
Troubleshooting	21

U

Unpacking	16
-----------------	----

W

Warranty	11
----------------	----

Bosch Rexroth AG

BP 101
91, bd Irène Joliot-Curie
69634 Vénissieux Cedex
France
Tel. +33 47878 5252
www.boschrexroth.com