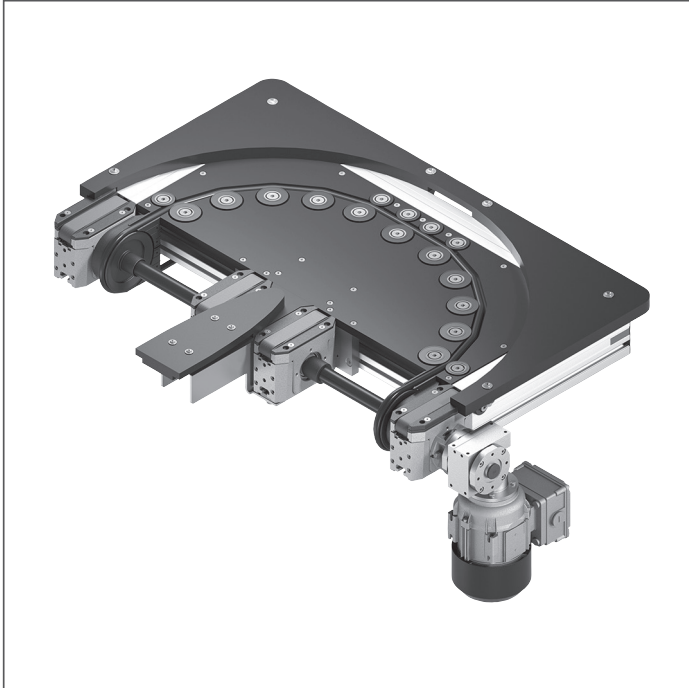
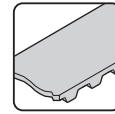


## Curve KE 2/180 LS



- ▶ 180° curve conveying of the workpiece pallet
- ▶ Curve module with built-in drive
- ▶ Max. total workpiece pallet weight = 20 kg
- ▶ Conveyor medium: Round belt (suitable for use in an EPA)
- ▶ Intended for grease-free and oil-free environments
- ▶ Can be combined with WT 2, WT 2/F and WT 2/LS

**Notice:** Accumulation operation not permitted.

The curves KE 2/... with round belt conveyor medium have a built-in drive at the curve end. They can be used to combine the longitudinal section with belts or toothed belts.

### Required accessories

- ▶ Connection kits
- ▶ Leg sets SZ 2/...

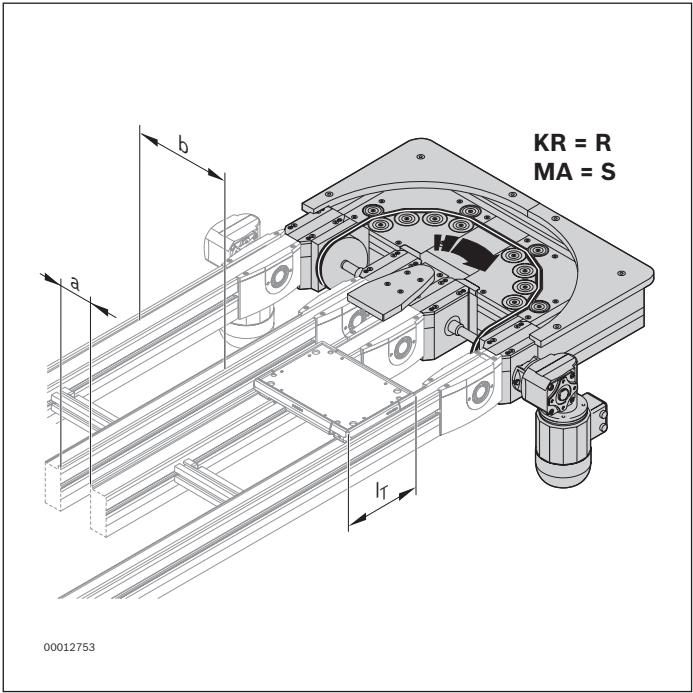
### Scope of delivery

Curve, complete with drive motor

### Condition on delivery

- ▶ Some assembly required
- ▶ Inner guide and motor included

Ordering information



Material number		3842999037
b (mm)	Track width in direction of transport	160; 240; 320; 400
l <sub>T</sub> (mm)	Length in direction of transport	160; 240; 320; 400
a (mm)	Distance between conveyors <sup>1)</sup>	90; 135
b x l <sub>T</sub> (mm x mm)	Combination options	160 x 160; 240 x 160; 240; 320 320 x 240; 320; 400 400 x 320; 400
v <sub>N</sub> (m/min)	Nominal speed	0; 6; 9; 12; 15; 18
AT	Motor connection S = cable/plug K = terminal box	S; K
MA	Motor mounting M = center S = on the outside, on the side	M <sup>2)</sup> ; S
KR	Curve direction R = right L = left	R; L

<sup>1)</sup> b x l<sub>T</sub> is possible in all combinations

<sup>2)</sup> MA = M only when b ≥ 320 mm

Technical data

Material number		3842999037	
Max. total workpiece pallet weight	m <sub>G</sub>	kg	20
ESD			Yes

