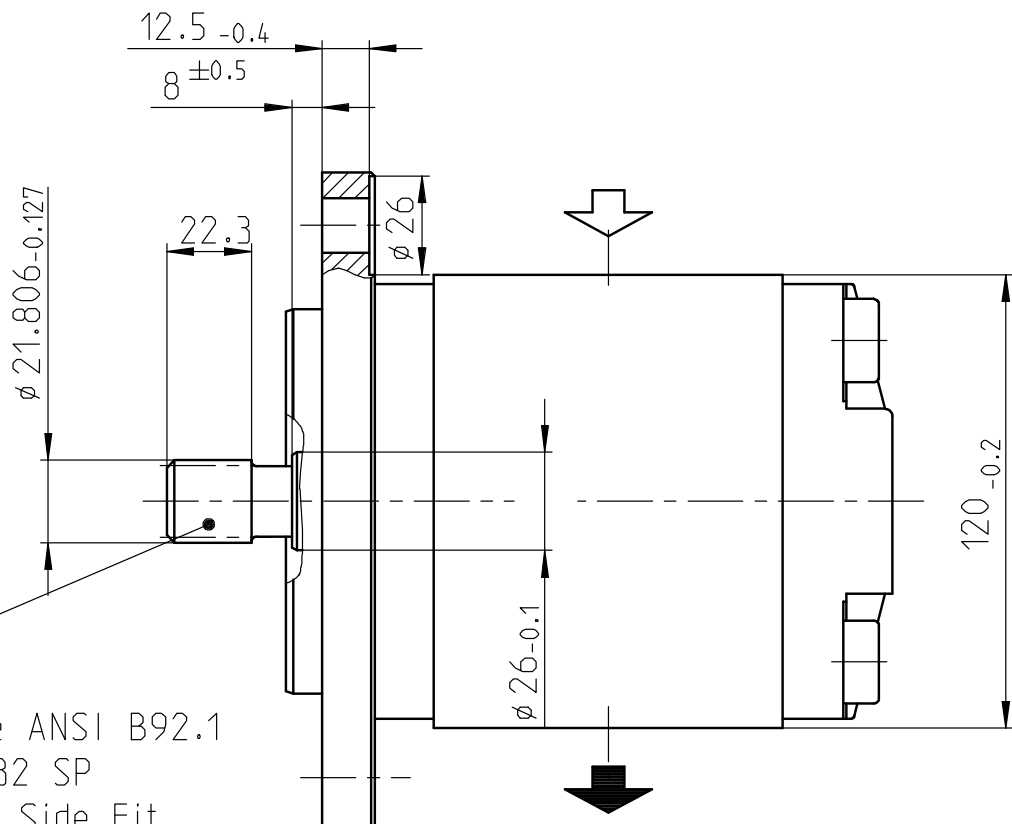
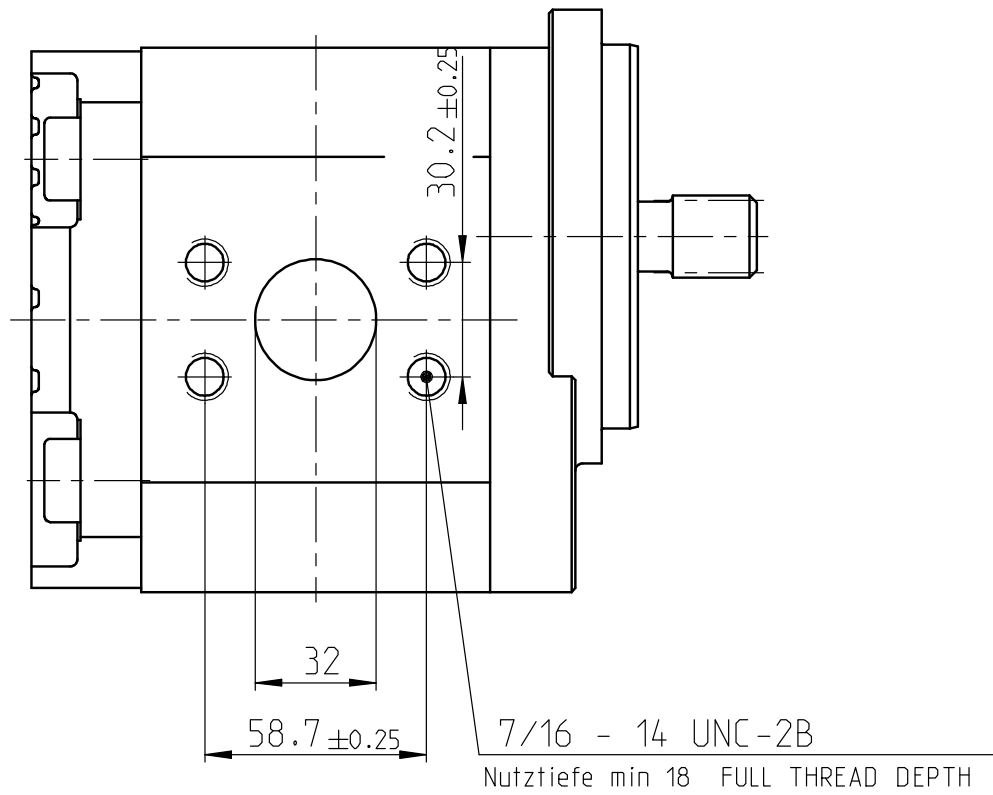
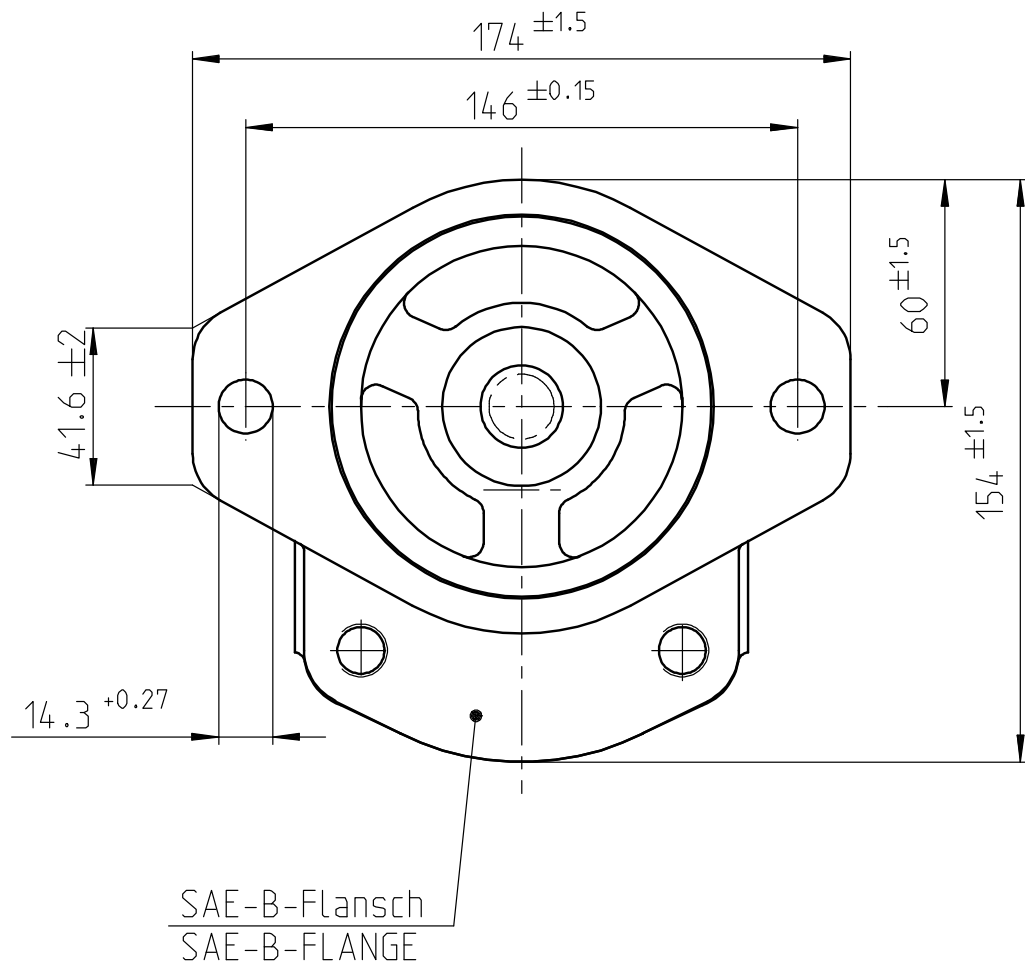
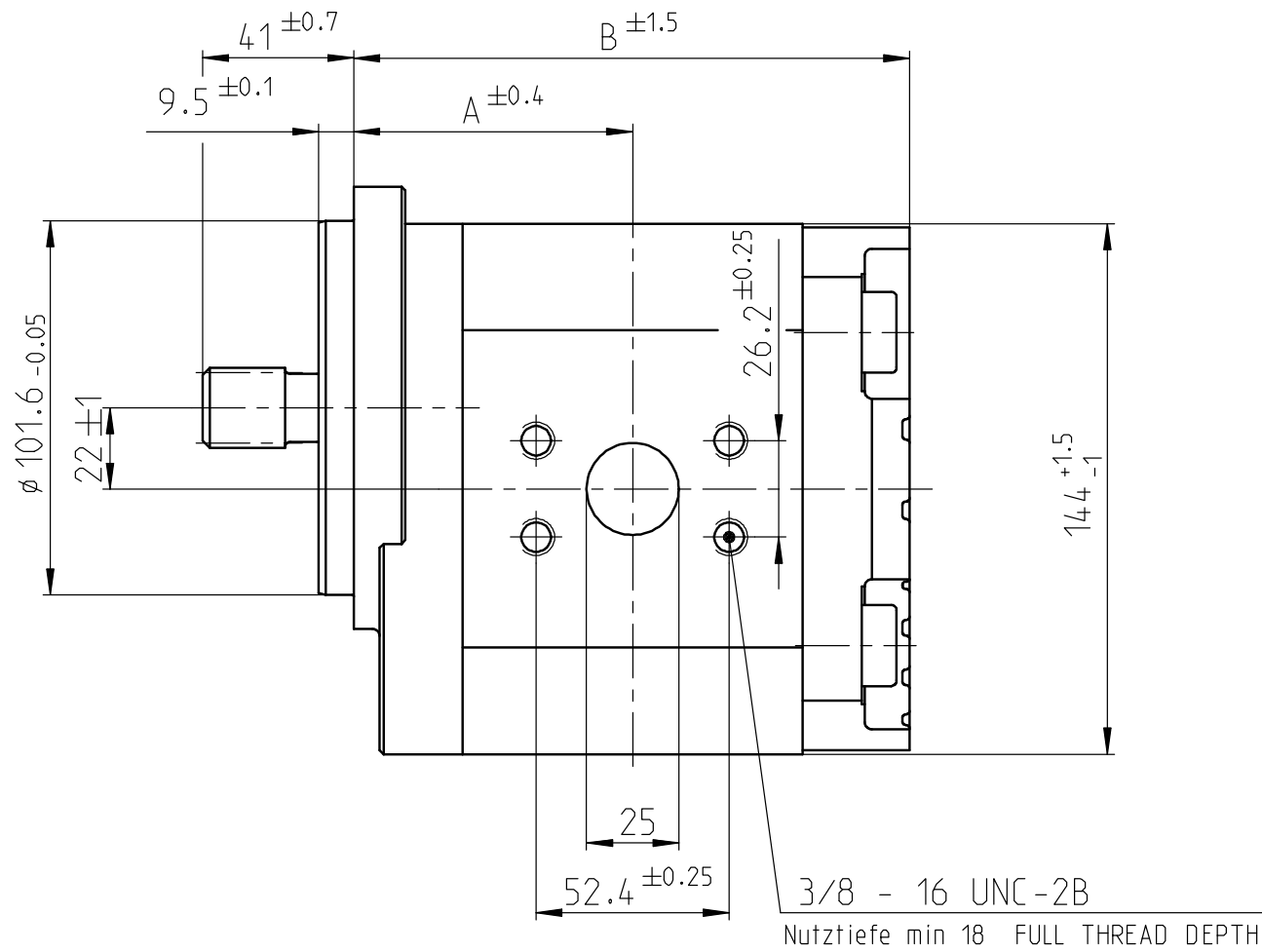


© Alle Rechte bei Bosch Rexroth AG, auch für den Fall von Schutzrechtsanmeldungen. Jede Verfügungsbefugnis, wie Kopier- und Weitergaberecht, bei uns.

© This document, as well as the data, specifications and other information set forth in it, are the exclusive property of Bosch Rexroth AG. It may not be reproduced or given to third parties without its consent.



Zahnwelle ANSI B92.1
13 T 16/32 SP
Flat Root Side Fit
jed. Zahndicke S = 2.155 -0.030

SPLINE SHAFT ANSI B92.1
13 T 16/32 SP
FLAT ROOT SIDE FIT
TOOTH THICKNESS S = 2.155 -0.030

HINWEISE UND ANGABEN

Betriebsbedingungen siehe Y 510 400 419

Die Darstellung zeigt eine rechtsdrehende Pumpe (Auf Antriebswelle gesehen).
Die Pumpe darf nur in angegebener Drehrichtung drehen.

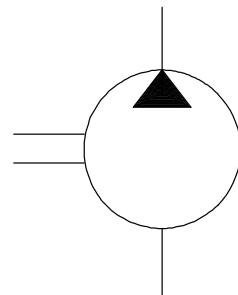
Alle Öanschlüsse für Transport und Lagerung staubdicht verschlossen, z.B. mit Kunststoffstopfen

ADDITIONAL INFORMATION

WORKING CONDITIONS SEE Y 510 400 419

CW ROTATION SHOWN.
PUMP MUST BE DRIVEN IN PROPER DIRECTION ONLY.

ALL OIL PORTS CLOSED PROPERLY AGAINST DUST FOR TRANSPORT AND STORAGE, E.G. WITH PLASTIC CLOSURE CAPS.



| B 510 G41 285 | 9 510 490 048 | AZPG-22-050RDC15MB | rechts/CW | 50 | 2600 | 220 | 77.7 | 153.0 | . |
|-----------------------------|---------------|--------------------|---------------------|---------------------------------|-----------------------------|-------------------------------------|-------------------|-------|-------------|
| B 510 G41 284 | 9 510 490 047 | AZPG-22-045RDC15MB | rechts/CW | 45 | 2600 | 250 | 75.6 | 148.8 | . |
| B 510 G41 283 | 9 510 490 046 | AZPG-22-040RDC15MB | rechts/CW | 40 | 2800 | 250 | 73.6 | 144.8 | . |
| Entwurfs- Zeichnungs-Nr. | Bestell-Nr. | Typ-Aufschrift | Dreh- richtung | Volumen [cm ³ /U] | max. Drehzahl [U/min] | max. Druck (intermitt.) [bar] | A Mass [mm] | B | Bemerkungen |
| DRAWING | PART NUMBER | DESIGNATION | DIR. OF ROTATION | DISPLACEMENT | MAX. SPEED | MAX. PRESSURE | DIMENSIONS | | REMARKS |

| | | | | | | |
|----------------------------------|----------|------------|---------------|------------------|-----------------|---------------------------|
| AC -- | 20180720 | bhl2si | | | 7930 DC-MO/EGE1 | ECR 79372 |
| AA -- | 20100329 | Mu/He | Pr | | 7930 DC-MA/EPE1 | erstellt |
| Ind. Change/Aend. | YYYYMMDD | Drawn/Gez. | Checked/Prüf. | Released./Freig. | BWN | Resp. dept./Verantw. Abt. |
| Lang./Spr. | Syst. | Wght./Gew. | Scale/Verst. | Scale/Verst. | Doc.type | Repl. by |
| EN/DE | PE | | 1:2 | | AGZ | |
| OFFER DRAWING ANGEBOTSZEICHN. | | | | RA71140989 | | |
| MNR | | | | Repl. by | | |

| general tolerances for/Allgemeintoleranzen fuer | | |
|---|--------------|---------------|
| lin.dim./L.masse | radii/Radien | angles/Winkel |
| ± 0.3 | -- | ± 1° |
| drawing standard/ Zeichnungsstandard | ISO Standard | |
| hist. document no./ Hist. Dokumentnr. | 10641283 | |

RA71140989 / 4510641283 / AC.1 / MODEL NAME / DRAFT / AC.1