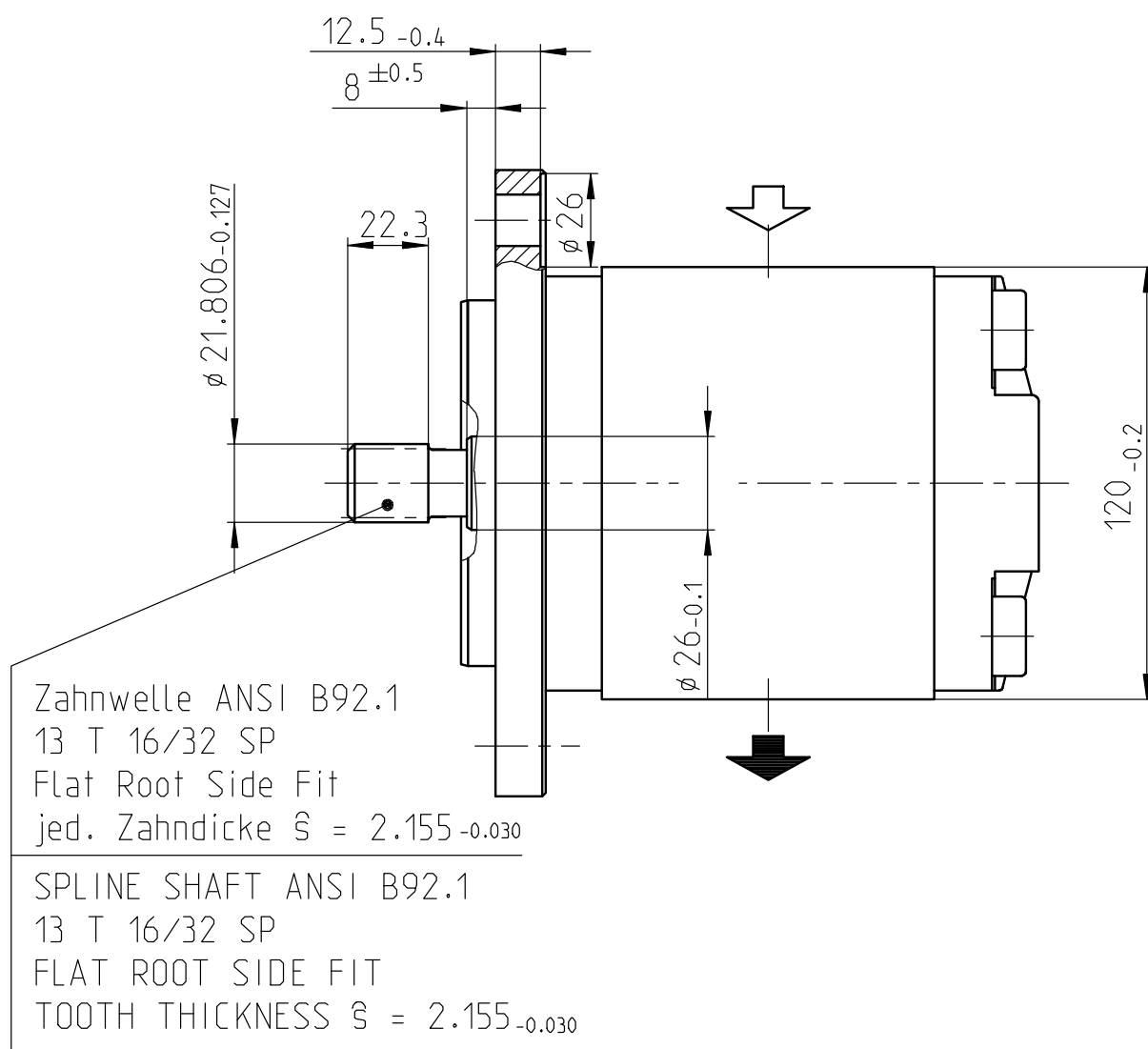
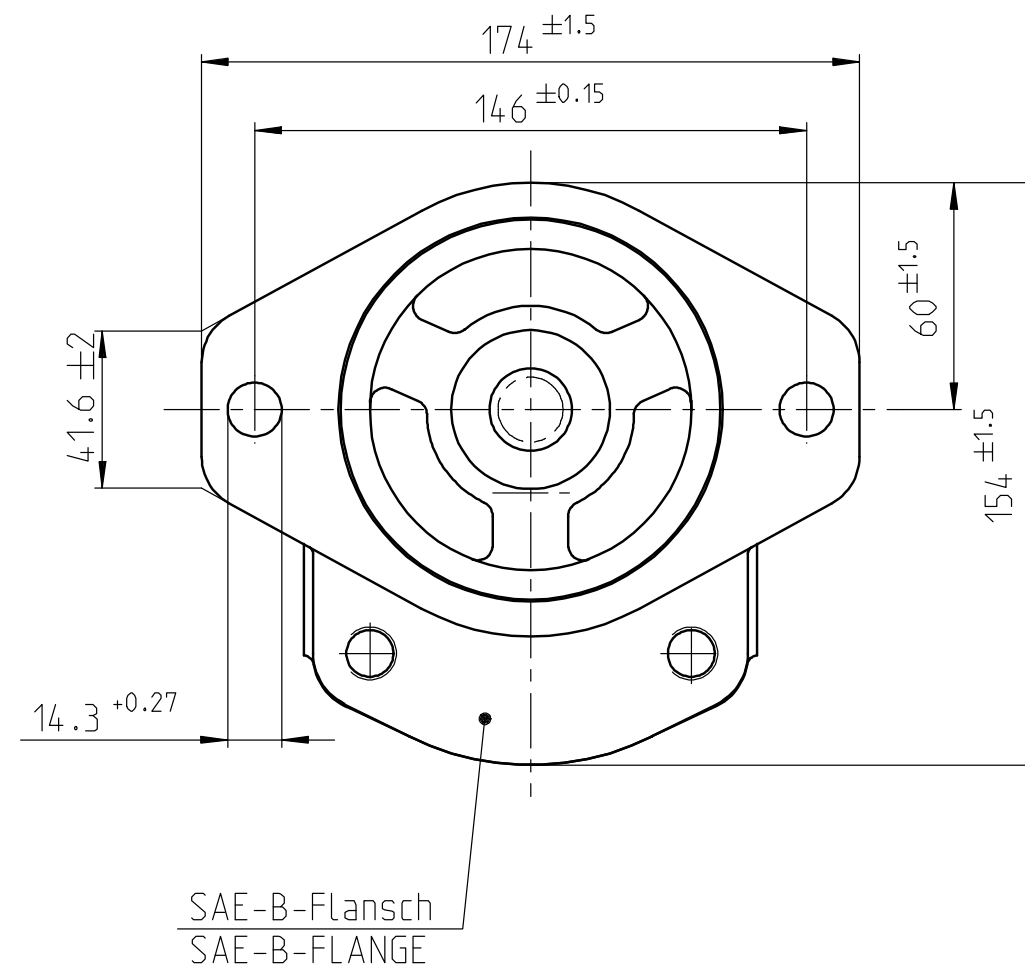
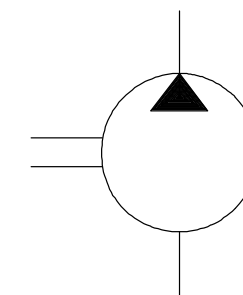


© This document, as well as the data, specifications and other information set forth in it, are the exclusive property of Bosch Rexroth AG. It may not be reproduced or given to third parties without its consent.




ALL OIL PORTS CLOSED PROPERLY AGAINST DUST FOR TRANSPORT AND STORAGE, E.G. WITH PLASTIC CLOSURE CAPS.



AD	--		20200728	PJR7CQB			7930	DC-MO/EGE1	ECR 94403
AA	--		20100329	Mu/Hze	Pr		7930	DC-MA/EPE1	erstellt
Ind./Change/Aend.			YYYYMMDD	Drawn/Gerz	Credited/Bepf.	Released/Freig.	BWN	Resp. dept./Verantw. Abt.	
								Add. info./Zus. Info.	
Lang./Spr.	Syst.	Wght./Gew.	rexroth				HY GEAR PUMP		Sheet/Bl.
EN/DE	PE		A Bosch Company				HY-ZAHNRADPUMPE		1/1
		Scale/M.:stab	OFFER DRAWING				Doc./Type		DP/TD
		1:2	ANGEBOTSZEICHN.				AGZ		Ind.
MNR							RA7Y1164949		Format
							Repl. for		A2
							Repl. by		

general tolerances for/Allgemeintoleranzen fuer		
lin.dim./L.masse	radii/Radien	angles/Winkel
± 0.3	--	± 1°
drawing standard/ Zeichnungsstandard	ISO Standard	
hist. document no./ Hist. Dokumentnr.	28-A510G41286	

28	PJR7COB		7930	DC-MO/EGE1	ECR 94403
29	Mu/He	Pr	7930	DC-MA/EPE1	erstellt
	Drawn/Gez.	checked/Gepr.	Released./Freig.	BWN	Resp. dept./Verantw. Abt.
					Add. info./Zus. Info.
					Sheet/Bl. 1/1
HY GEAR PUMP HY-ZAHNRADPUMPE					
Doc.type			AGZ		
OFFER DRAWING ANGEBOTSZEICHN.			Repl. for		Repl. by
			001		AD
			A2		