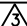
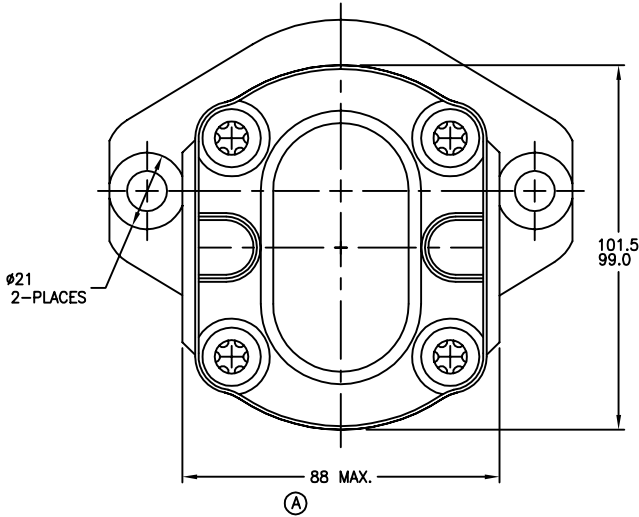
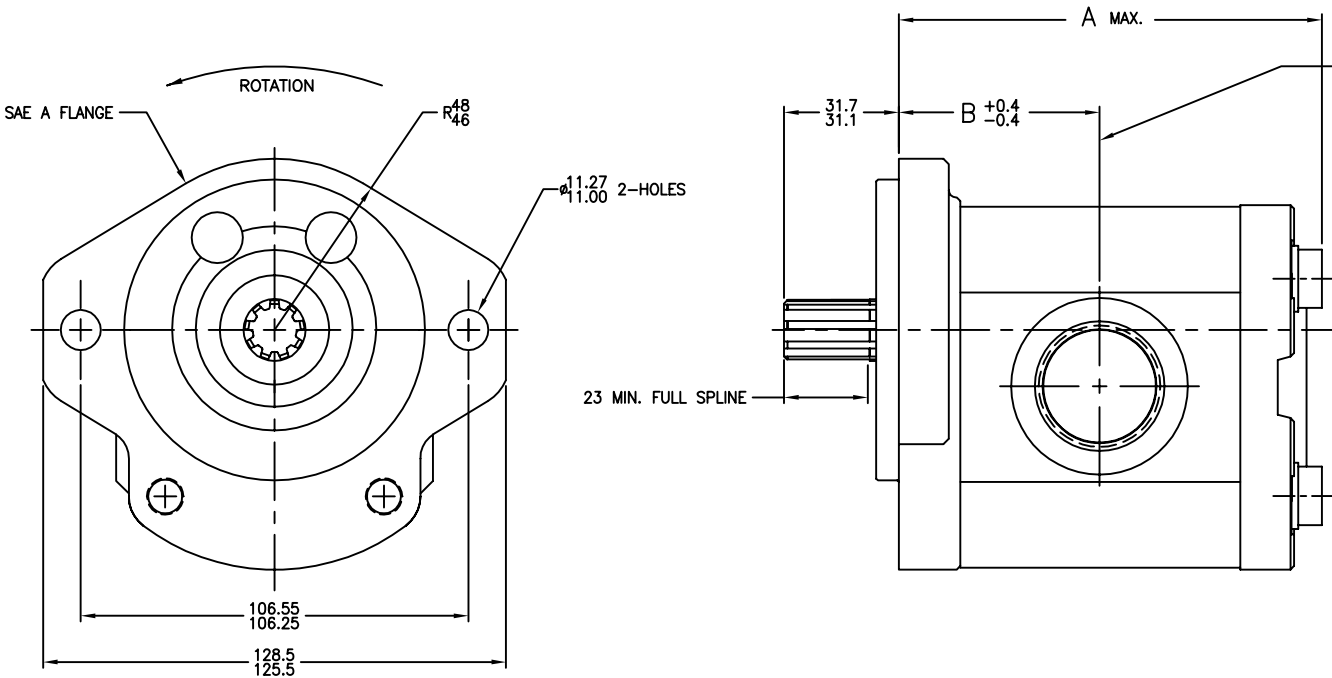
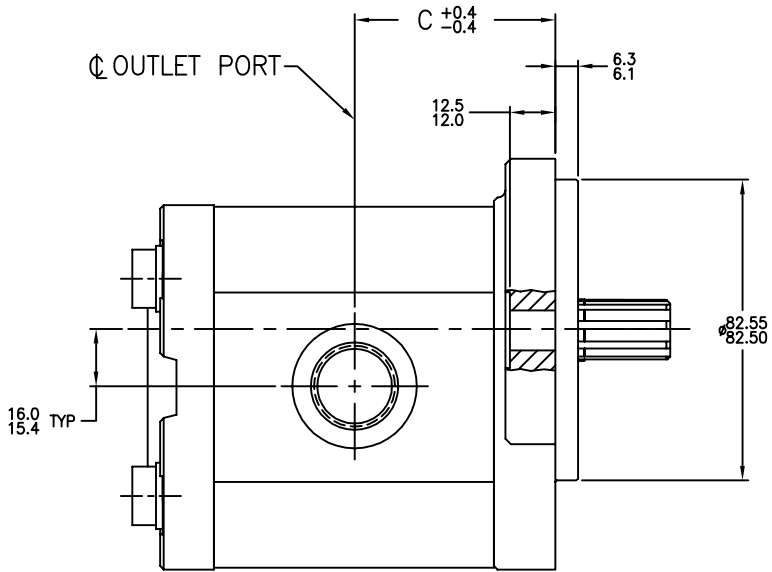


8		7		6			5	4	3	2	1
MODEL NUMBER	CATALOG NUMBER	DISPLACEMENT	OUTPUT FLOW 	A DIM.	B DIM.	C DIM.	INLET PORT (SAE O-RING BOSS)	OUTLET PORT (SAE O-RING BOSS)			
		CM³/REV	LITERS/MIN								
9 510 290 127	AZPF-12-016LRR12MB	16.5	31.0	105.0	49.9	49.9	1.312-12UN-2B THD.	.875-14UNF-2B THD.			
9 510 290 128	AZPF-12-019LRR12MB	19.6	37.4	110.0	52.4	52.4					
9 510 290 129	AZPF-12-022LRR12MB	22.9	44.1	115.4	55.1	55.1					

REV	DESCRIPTION	DATE	BY	CKD
	RELEASE TO PRODUCTION (CRR0319)	10-23-02	GRJ	
A	WAS 87 MAX (CRR1453)	01-18-06	DN	GRJ
B	ADD OPERATING CONDITIONS (ECN R7878-00055)	04-02-07	MEW	*
C	UPDATED CATALOG CODE (ECN R7878-00079)	05-22-07	MEW	*
D	CHANGED CATALOG CODE (ECN R7878-00269)	04-08-09	MEW	*



EXTERNAL INVOLUTE SPLINE DATA
FLAT ROOT SIDE FIT
FLAT ROOT SIDE FIT
NO. OF TEETH 9
SPLINE PITCH 16/32
PRESSURE ANGLE 30°
PITCH DIA. .56250 REF.
MAJOR DIA. .6034-.6085
FORM DIA. .504
CIRCULAR TOOTH THICKNESS:
MAX.EFFECTIVE .0942
MIN. ACTUAL .0916

- GENERAL NOTES:
- METRIC LINEAR MEASUREMENTS ARE IN MILLIMETERS
 - ROTATION VIEWING DRIVE END: COUNTERCLOCKWISE
 - OUTPUT FLOWS ARE AT 2000 RPM & 138 BAR USING SAE NO. 10 OIL AT 48°C
 - MAX RATED SPEED: UP TO 3500 RPM
 - EXTERNAL INVOLUTE SPLINE DATA IN DECIMAL INCHES
 - OPERATING CONDITIONS PER Y510 201 598 (B)

DO NOT SCALE UNLESS OTHERWISE SPECIFIED TOLERANCES PER DIN 7180mm	DRN GRJ DATE 10-23-02	DESCRIPTION	SCALE FULL
LINEAR DIMENSION TOL. 0- 6= ±0.1 6- 30= ±0.2 30- 120= ±0.3 120- 400= ±0.5 400-1000= ±0.8 ANGLES = ± 1°	APPD DATE	TITLE PUMP-GEAR, INSTALLATION	SHEET 1 OF 1
METRIC THIRD ANGLE PROJECTION	REV. D	REV. D	REV. D
ALL PROPRIETARY RIGHTS IN THE SUBJECT MATTER HEREOF ARE RESERVED, AND NO PERMISSION IS GRANTED TO REPRODUCE THIS PRINT IN WHOLE OR PART, OR TO DISCLOSE ANY OF THE INFORMATION UPON IT TO OTHERS.			
FOUNTAIN INN, SC 29644			