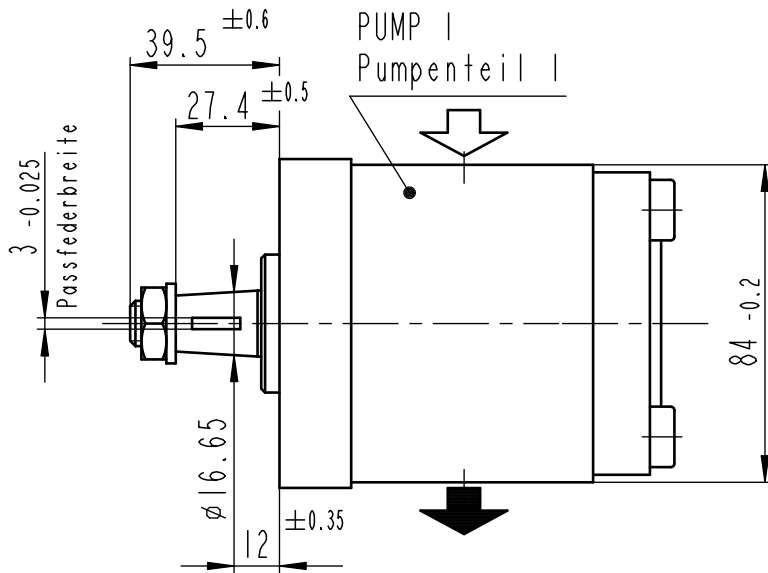
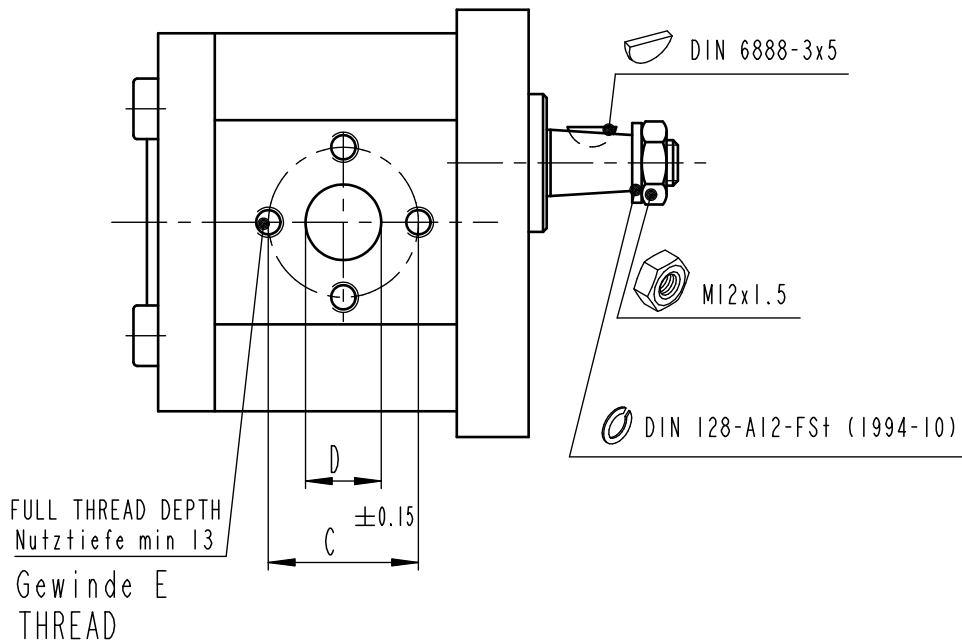
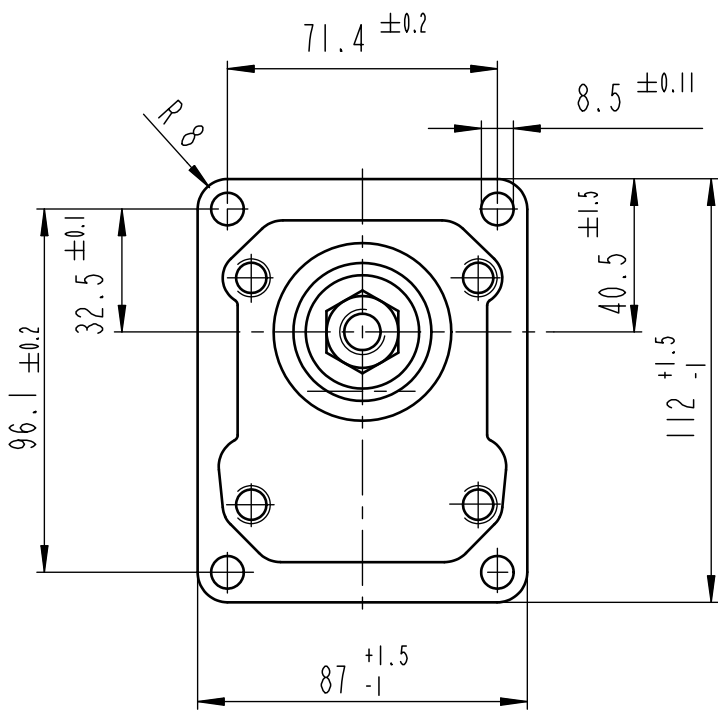
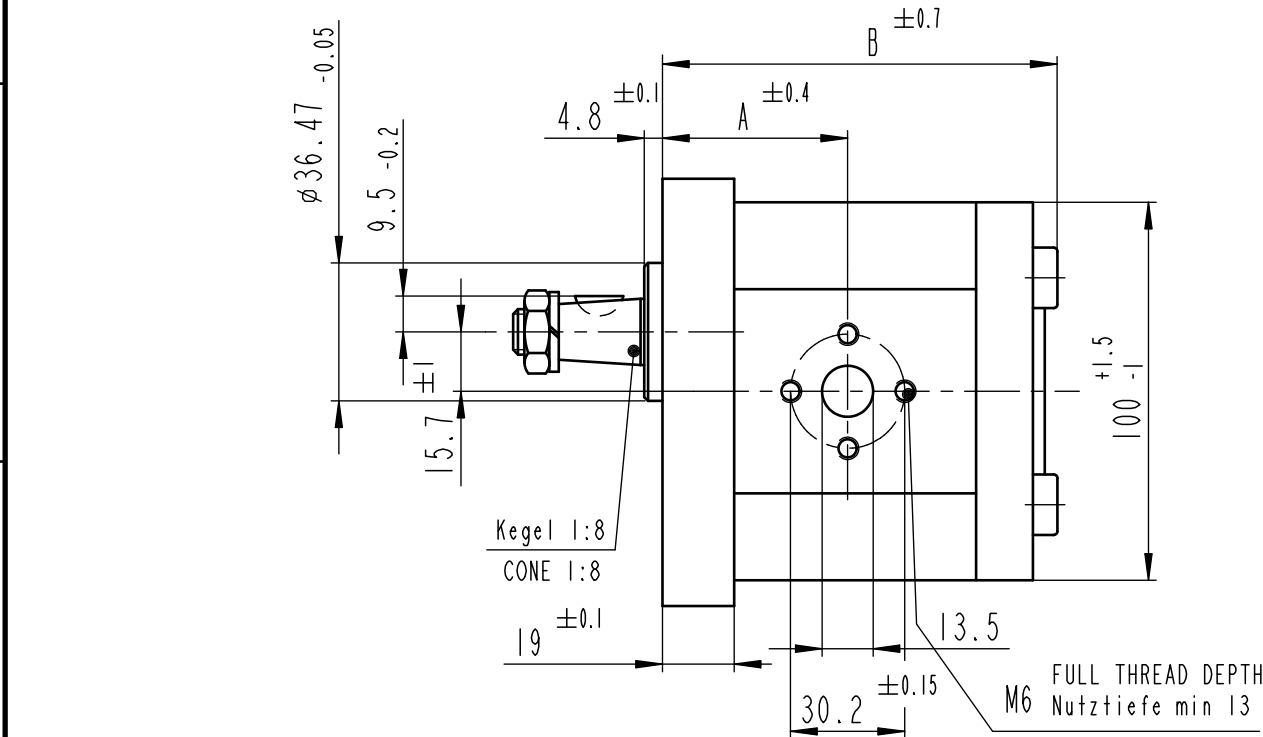


© Alle Rechte bei Bosch Rexroth AG, auch für den Fall von Schutzrechtsanmeldungen. Jede Verfügungsbefugnis, wie Kopier- und Weitergaberecht, bei uns.

© This document, as well as the data, specifications and other information set forth in it, are the exclusive property of Bosch Rexroth AG. It may not be reproduced or given to third parties without its consent.



HINWEISE UND ANGABEN

Betriebsbedingungen siehe Y 510 201 598

Die Darstellung zeigt eine rechtsdrehende Pumpe (Auf Antriebswelle gesehen). Bei linksdrehender Pumpe ist Druck- und Sauganschluß vertauscht. Die Pumpe darf nur in angegebener Drehrichtung drehen.

Alle Ölschlüsse für Transport und Lagerung staubdicht verschlossen, z.B. mit Kunststoffstopfen.

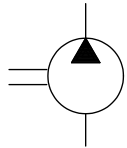
ADDITIONAL INFORMATION

WORKING CONDITIONS SEE Y 510 201 598

CW ROTATION SHOWN. CCW ROTATION PUMPS HAVE PRESSURE AND SUCTION PORT ON OPPOSITE SIDE. PUMP MUST BE DRIVEN IN PROPER DIRECTION ONLY.

ALL OIL PORTS CLOSED PROPERLY AGAINST DUST FOR TRANSPORT AND STORAGE, E.G. WITH PLASTIC CLOSURE CAPS.

| | | | | | | | | | | | | | |
|-------------------------|---------------|--------------------|------------------|--------------------------|-----------------------|-------------------------------|------------|-------|------|------|----|--------------|-----------|
| B 510 240 377 | 0 510 725 390 | AZPF-10-022LHO30KB | links/CCW | 22.5 | 2500 | 210 | 56.6 | 114.5 | | | | 3.8 | Viton-WDR |
| B 510 240 316 | 0 510 725 331 | AZPF-10-022LHO30MB | links/CCW | | | | | | | | | | |
| B 510 240 315 | 0 510 725 031 | AZPF-10-022RHO30MB | rechts/CW | | | | | | | | | | |
| B 510 240 334 | 0 510 625 319 | AZPF-10-019LHO30KB | links/CCW | 19 | | 230 | | | | | | 3.6 | Viton-WDR |
| B 510 240 333 | 0 510 625 017 | AZPF-10-019RHO30MB | rechts/CW | | | | | | | | | | |
| B 510 240 108 | 0 510 625 341 | AZPF-10-016LHO30KB | links/CCW | 16 | 3000 | | 49 | 104.1 | 39.7 | 20 | M8 | 3.4 | Viton-WDR |
| B 510 240 332 | 0 510 625 318 | AZPF-10-016LHO30KB | links/CCW | | | | | | | | | | Viton-WDR |
| B 510 240 331 | 0 510 625 016 | AZPF-10-016RHO30MB | rechts/CW | | | | | | | | | | |
| B 510 240 330 | 0 510 525 314 | AZPF-10-014LHO30MB | links/CCW | 14 | | | | 100.7 | | | | 3.2 | |
| B 510 240 329 | 0 510 525 012 | AZPF-10-014RHO30MB | rechts/CW | | | | | | | | | | |
| B 510 240 328 | 0 510 525 313 | AZPF-10-011LHO30KB | links/CCW | 11 | 3500 | | | 95.7 | | | | 3.0 | Viton-WDR |
| B 510 240 327 | 0 510 525 011 | AZPF-10-011RHO30MB | rechts/CW | | | | | | | | | | |
| B 510 240 326 | 0 510 425 309 | AZPF-10-008LHO30MB | links/CCW | 8 | | | | 90.7 | | | | 2.9 | |
| B 510 240 325 | 0 510 425 011 | AZPF-10-008RHO30MB | rechts/CW | | | | | | | | | | |
| B 510 240 324 | 0 510 325 308 | AZPF-10-005LHO30MB | links/CCW | | | | | | | | | | |
| B 510 240 323 | 0 510 325 008 | AZPF-10-005RHO30MB | rechts/CW | 5.5 | 4000 | | | 86.6 | 30.2 | 13.5 | M6 | 2.85 | |
| B 510 240 322 | 0 510 225 308 | AZPF-10-004LHO30MB | links/CCW | | | | | | | | | | |
| B 510 240 321 | 0 510 225 008 | AZPF-10-004RHO30MB | rechts/CW | 4 | | | | 84.1 | | | | 2.8 | |
| Entwurfs-Zeichnungs-Nr. | Bestell-Nr. | Typ-Aufschrift | Dreh-richtung | Förder-volumen [cm³ / U] | max. Drehzahl [U/min] | max. Druck (intermitt.) [bar] | A | B | C | D | E | Gewicht [kg] | Bemerkung |
| DRAWING | PART NUMBER | DESIGNATION | DIR. OF ROTATION | DISPLACEMENT | MAX. SPEED | MAX. PRESSURE | DIMENSIONS | | | | | WEIGHT | REMARKS |



| | | | | | | |
|---------------------------------------------------|----------|------------|---------------|-----------------|----------------|---------------------------|
| AS -- | 20140904 | poc2si | POC2SI | len2si | 7930 DC-MA/EPE | 51 MAEPE 0852 |
| AA -- | 19880801 | MG | MG | 7930 DC-MA/EPE | 51 MAEPE 0852 | |
| Ind. Change/Aend. | YYYYMMDD | Drawn/Gez. | Checked/Prüf. | Released/Freig. | BWN | Resp. dept./Verantw. Abt. |
| Lang./Spr. | Syst. | Wght./Gew. | Scale/Vergr. | Doc.type | Repl. for | Repl. by |
| EN/DE | PE | 1:2 | 1:2 | AGZ | A 510 240 321 | 001 AS |
| HYDRAULIC GEAR PUMP "AZPF" HY-ZAHNRADPUMPE "AZPF" | | | | | | Sheet/Bl. 1/1 |
| OFFER DRAWING ANGEBOTSSZEICHN. | | | | | | Format A2 |

| | | |
|-------------------------------------------------|--------------|---------------|
| general tolerances for/Allgemeintoleranzen fuer | | |
| lin.dim./L.masse | radii/Radien | angles/Winkel |
| ±0.3 | - | ±1° |
| all linear dimensions in/Alle Laengenmasse in | | mm |
| drawing standard/Zeichnungsstandard | ISO Standard | |
| A-document/A-Dokument | 50292725 | |