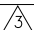
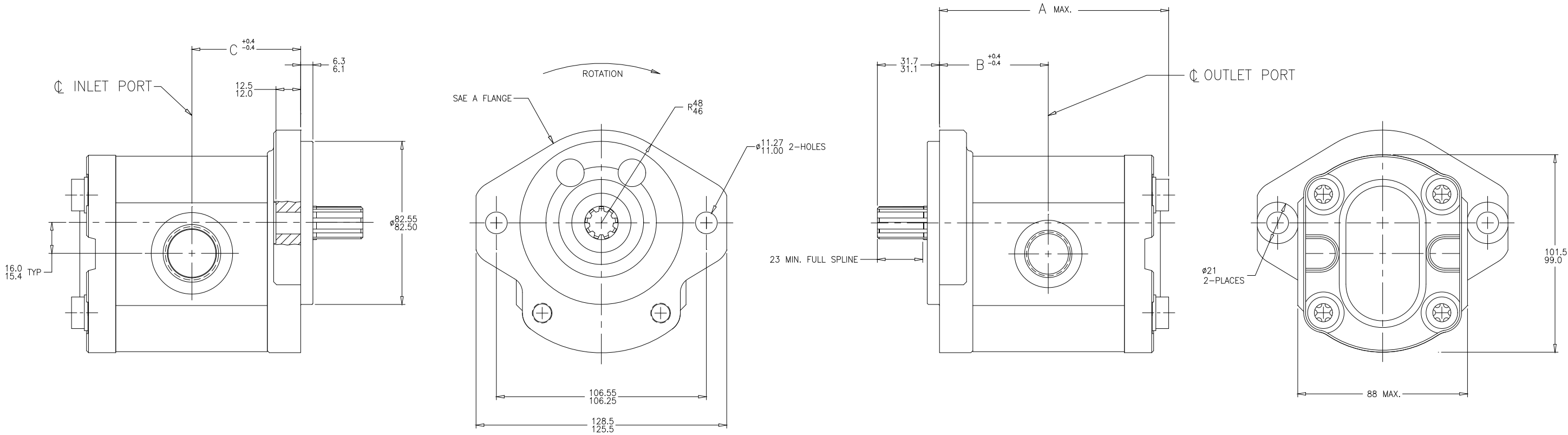





8		7		6			5		4		3		2		1		
MODEL NUMBER	CATALOG NUMBER	DISPLACEMENT	OUTPUT FLOW 	A DIM.	B DIM.	C DIM.	INLET PORT (SAE O-RING BOSS)	OUTLET PORT (SAE O-RING BOSS)					REV	DESCRIPTION	DATE	BY	CKD
		CM³/REV	LITERS/MIN											RELEASE TO PRODUCTION (CRR1695)	08-16-06	MEW	GRJ
9 510 290 414	AZ-P-F-12-011-RRR12MB	11.3	21.0	96.6	47.0	47.0	1.062-12 UN-2B THD.	.875-14 UNF-2B THD.									

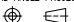


 EXTERNAL INVOLUTE SPLINE DATA  
FLAT ROOT SIDE FIT  
FLAT ROOT SIDE FIT  
NO. OF TEETH 9  
SPLINE PITCH 16/32  
PRESSURE ANGLE 30°  
PITCH DIA. .56250 REF.  
MAJOR DIA. .6034-.6085  
FORM DIA. .504  
CIRCULAR TOOTH THICKNESS:  
MAX.EFFECTIVE .0942  
MIN. ACTUAL .0916

GENERAL NOTES:

- METRIC LINEAR MEASUREMENTS ARE IN MILLIMETERS
- ROTATION VIEWING DRIVE END: CLOCKWISE
-  OUTPUT FLOWS ARE AT 2000 RPM & 138 BAR USING SAE NO. 10 OIL AT 48°C
- MAX RATED SPEED: UP TO 3500 RPM
-  EXTERNAL INVOLUTE SPLINE DATA IN DECIMAL INCHES

9 510 290 414

DO NOT SCALE UNLESS OTHERWISE SPECIFIED: TOLERANCES PER DIN 7168m	DRW MEW	DATE 08-16-06	DESCRIPTION		SCALE FULL
	CHK GRJ	DATE 08-16-06	TITLE PUMP-GEAR, INSTALLATION		
LINEAR DIMENSION TOL. 0- 6= ±0.1 6- 30= ±0.2 30- 120= ±0.3 120- 400= ±0.5 400-1000= ±0.8 ANGLES ± 1°	REF. 9510290003	DATE	DWG. NO. 9 510 290 414	SHEET 1	OF 1
METRIC THIRD ANGLE PROJECTION 	CAD-ORIGINAL Revisions thru CAD Only		REV. *	MATERIAL	
ALL PROPRIETARY RIGHTS IN THE SUBJECT MATTER HEREOF ARE RESERVED, AND NO PERMISSION IS GRANTED TO REPRODUCE THIS PRINT IN WHOLE OR PART, OR TO DISCLOSE ANY OF THE INFORMATION UPON IT TO OTHERS.			D	<b>Rexroth Bosch Group</b> WOOSTER, OHIO 44691	