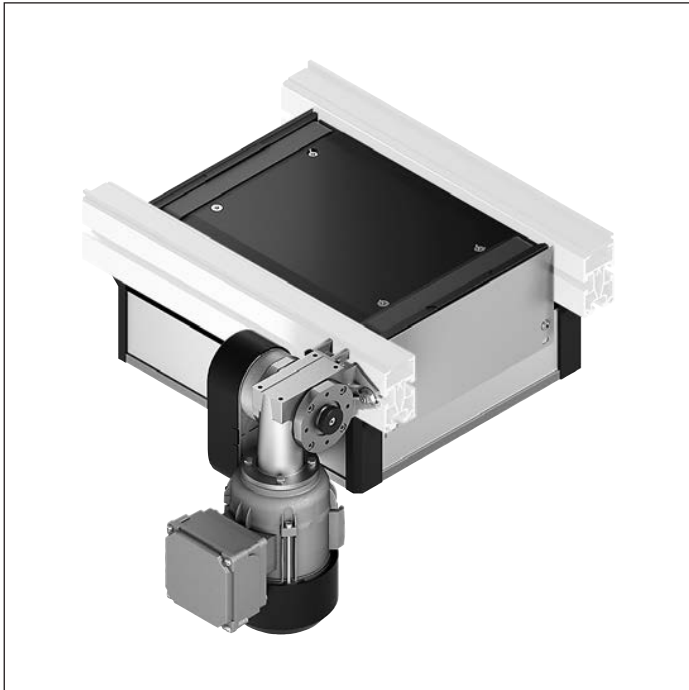


Lift transverse unit HQ 2/S



- ▶ Lift transverse unit for feeding out from a longitudinal section into a transverse section and vice versa
- ▶ Low height with motor mounted on side. It is therefore suitable for the operation of double-deck conveyor sections
- ▶ In two sizes with one or two lifting cylinders
- ▶ Conveyor medium: Toothed belt (suitable for use in an EPA)
- ▶ Pneumatic equipment for 2 (top, center) or 3 (top, center, bottom) lift positions
- ▶ Suitable for mounting on a section ST 2/... with a profile width of 45 mm or a section ST 2/... H with a profile width of 50 mm
- ▶ Can be combined with workpiece pallets WT 2/E, WT 2 and WT 2/F

Notice:

- ▶ Reversible operation possible
- ▶ Accumulation operation not permitted

Vertical movement is delivered by pneumatic cylinders. Two sizes for overall weights (workpiece pallet + load) of up to 30 kg are available: Size 1 (BG 1) with one lifting

cylinder. Size 2 (BG 2) with two lifting cylinders for workpiece pallet dimensions of 400 x 480 mm and above.

Required accessories

- ▶ 1x sensor M12x1 with rated switching distance $S_N = 4$ mm for each (top/center/bottom) position sensing location (3842549814, 3842501548)

Recommended accessories

- ▶ Damper DA 2/60 (3842557983) for outfeeding workpiece pallets at $v_N > 9$ m/min
- ▶ Rockers WI 2/..., WI/M (3842530797) and dampers DA 2/60 (3842557983), DA 2/100-C for BG 2 (3842525734) for infeeding the workpiece pallet
- ▶ Assembly tool (3842567664) for simple tensioning of the connection belt toothed belt

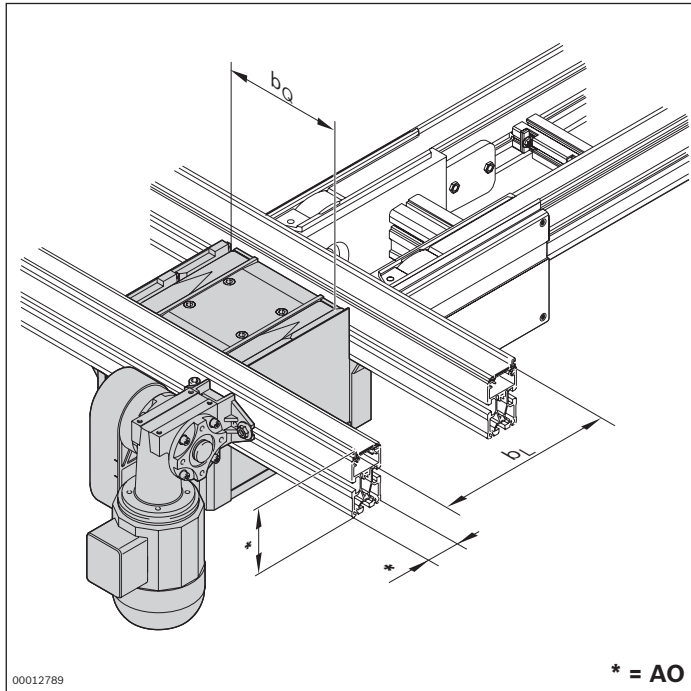
Scope of delivery

- ▶ Incl. fastening material
- ▶ Pneumatic equipment for two or three positions
- ▶ Construction kit for electrical position sensing for 1 to 3 sensors (top/center/bottom). You can query all 3 lift positions.
- ▶ Protective case SK 2/B

Condition on delivery

- ▶ Pre-assembled in modular units
- ▶ Protective case, not assembled

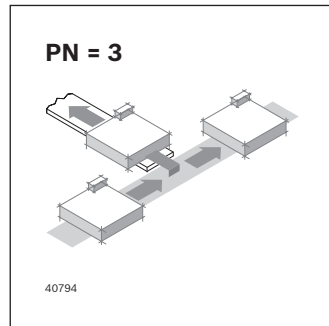
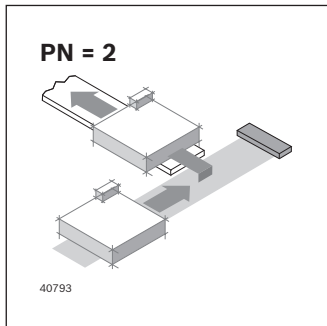
Ordering information



| Material number | | 3842999888 |
|----------------------------|---|--|
| b_Q (mm) | Track width in the transverse conveyor | 160; 240; 320; 400; 480; 640; 800 |
| b_L (mm) | Track width in the longitudinal conveyor | 160; 240; 320; 400; 480 |
| $b_Q \times b_L$ (mm x mm) | Combination options | BG 1: 160 x 160; 240; 320 240 x 160; 240; 320; 400 320 x 160; 240; 320; 400 400 x 240; 320; 400 480 x 320 BG 2: 400 x 480 480 x 400; 480 640 x 400; 480 800 x 400; 480 |
| AO | Installation location, profile 0 = profile 45x80 1 = profile 45x100 2 = profile 50x100 | 0; 1; 2 |
| PN | Pneumatic equipment | 2 ¹⁾ ; 3 ²⁾ |
| v_N (m/min) | Nominal speed | 0; 6; 9; 12; 15; 18 |
| U (V) | Voltage | See motor data |
| f (Hz) | Frequency | See motor data |
| AT | Motor connection S = cable/plug K = terminal box | S; K |

¹⁾ PN = 2: Upper and middle lift position

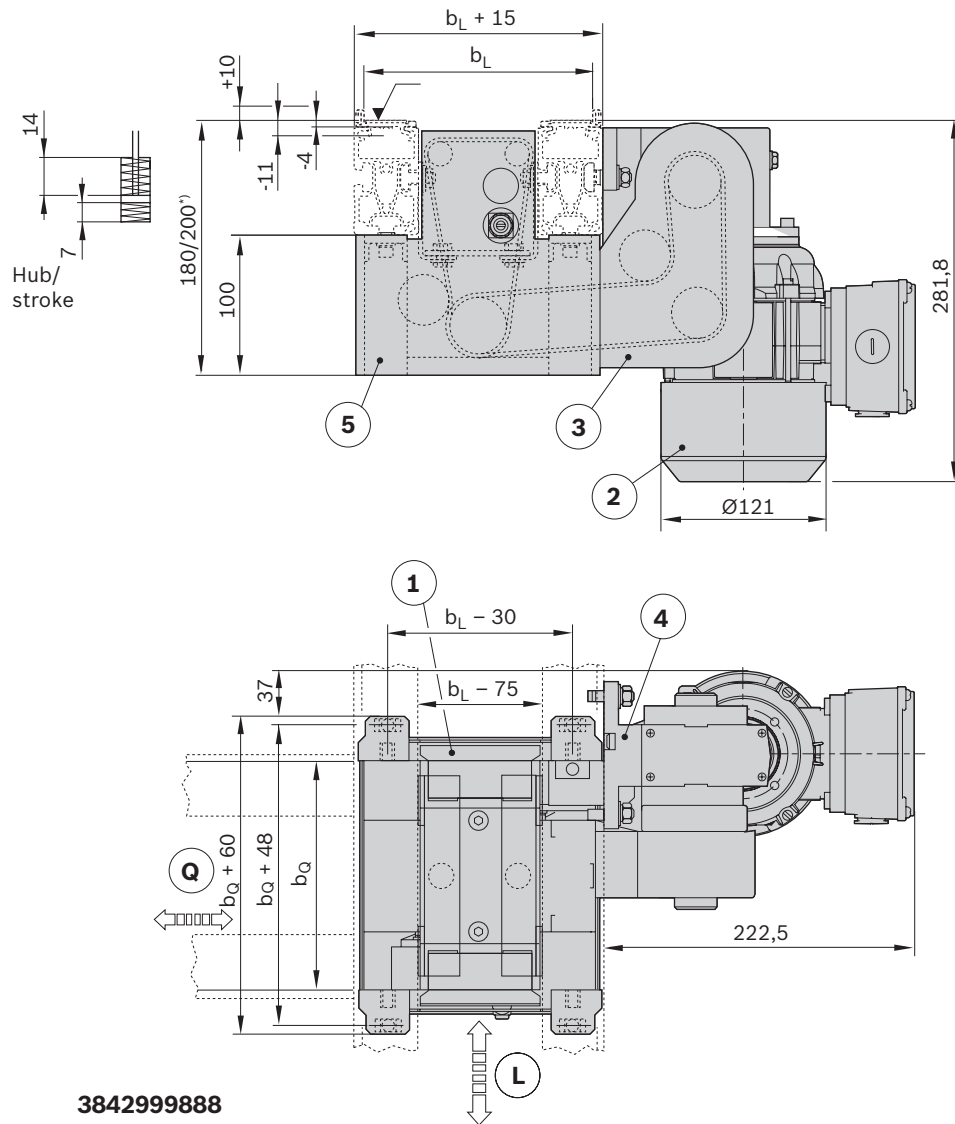
²⁾ PN = 3: Upper, middle and lower lift position



Technical data

| Material number | | 3842999888 | |
|------------------------------------|-------------|------------|------------|
| Max. total workpiece pallet weight | m_G | kg | 30 |
| ESD | | | Yes |
| Size | BG | | BG 1; BG 2 |
| Required compressed air connection | p | bar | 4 ... 6 |
| Push in air connection | \emptyset | mm | 6 |

Dimensions

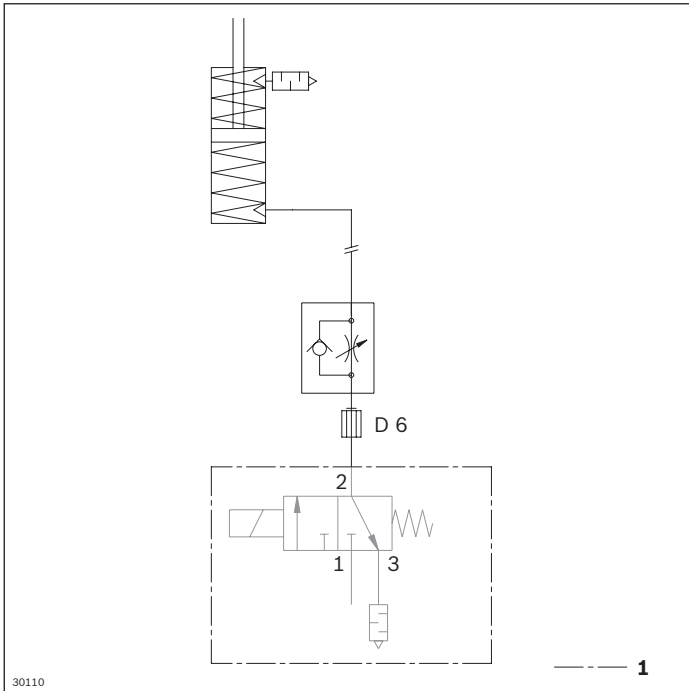


00116035

- L Conveying direction of longitudinal section
 Q Conveying direction of transverse section
 1 Lift transverse unit HQ 2/S
 2 Drive motor
 3 Connection kit
 4 Motor mounting kit
 5 Protective case
¹⁾ 180 mm for 80 mm profile height, 200 mm for 100 mm profile height

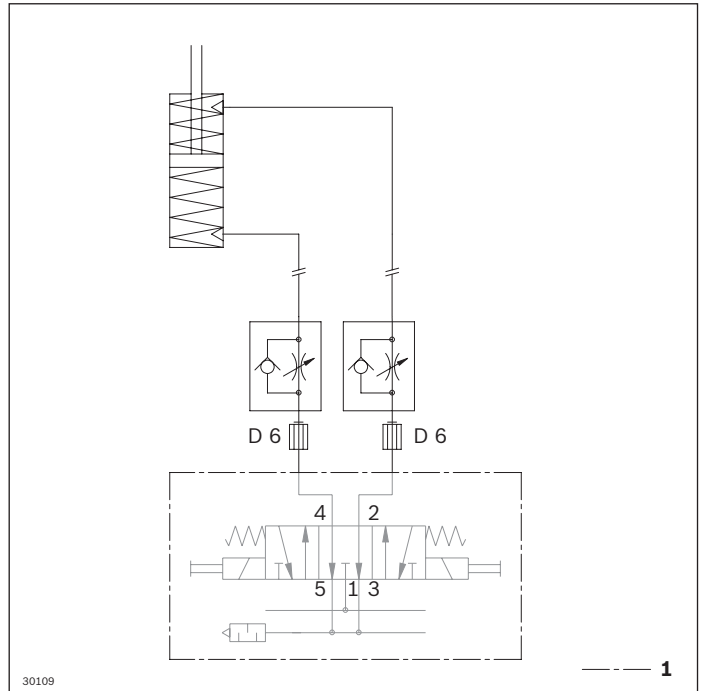
The data specified above only serves to describe the product. Due to the continuing development of our products, no statements concerning a certain condition or suitability for a certain application can be derived from our information. The information given does not exempt the user from the obligation of own judgment and verification. It must be remembered that our products are subject to a natural process of wear and aging.

Circuit diagram for unit with pneumatic equipment for two positions PN = 2, BG 1



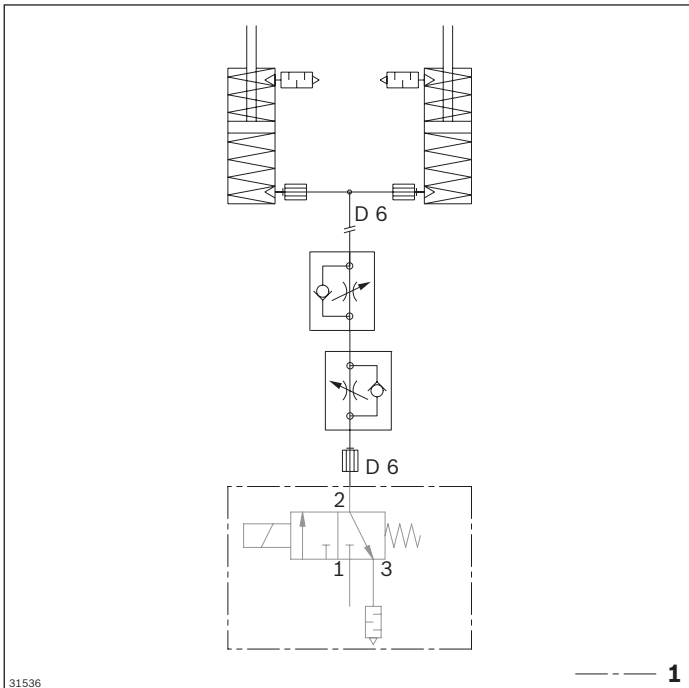
1 Not included in the scope of delivery

Circuit diagram for unit with pneumatic equipment for three positions PN = 3, BG 1



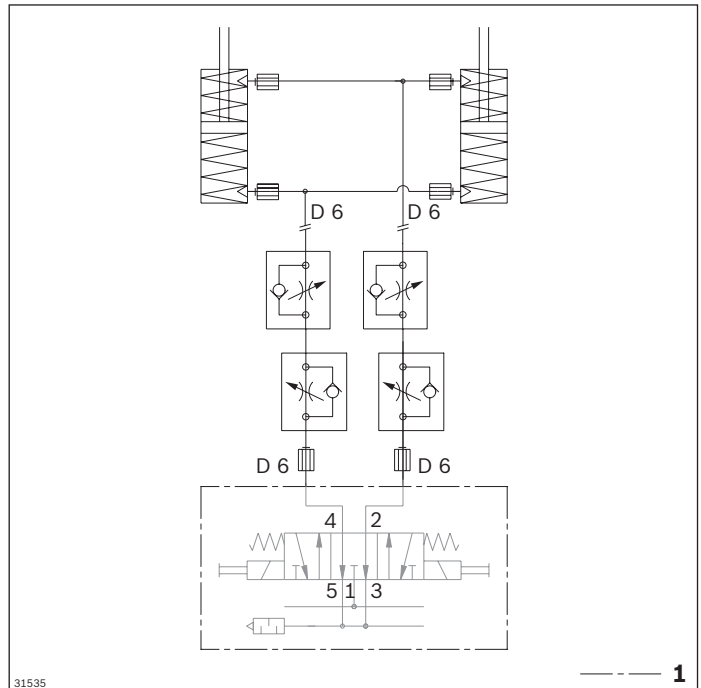
1 Not included in the scope of delivery

Circuit diagram for unit with pneumatic equipment for two positions PN = 2, BG 2



1 Not included in the scope of delivery

Circuit diagram for unit with pneumatic equipment for three positions PN = 3, BG 2



1 Not included in the scope of delivery

The data specified above only serves to describe the product. Due to the continuing development of our products, no statements concerning a certain condition or suitability for a certain application can be derived from our information. The information given does not exempt the user from the obligation of own judgment and verification. It must be remembered that our products are subject to a natural process of wear and aging.