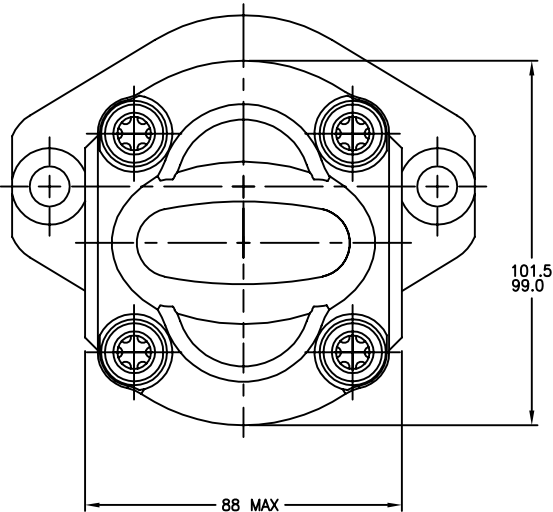
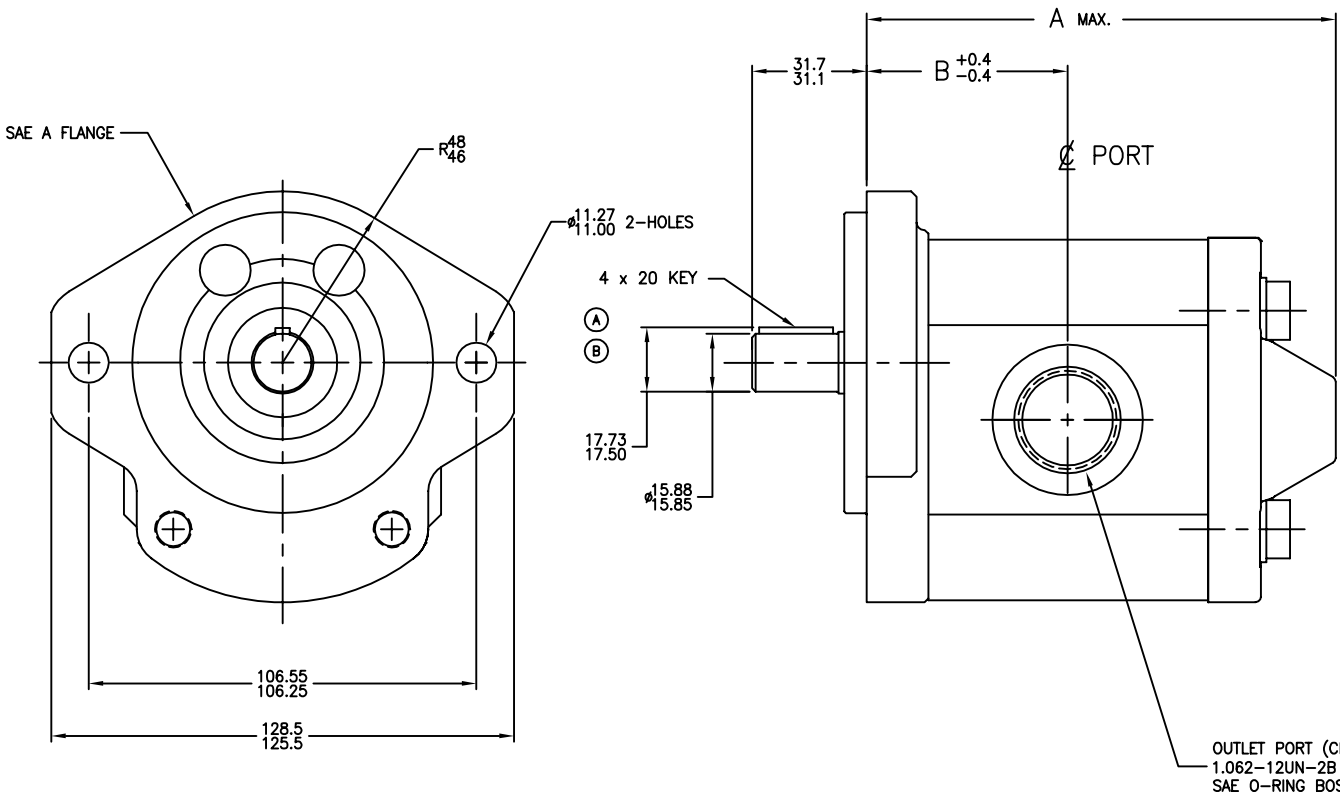
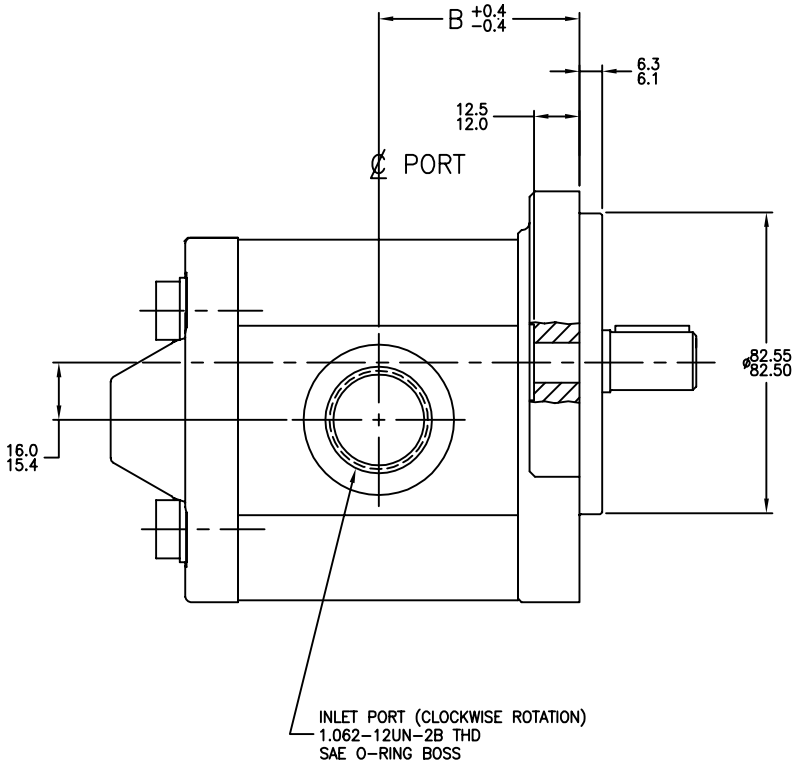


8		7		6		5	
MODEL NUMBER	CATALOG NUMBER	DISPLACEMENT	Ⓓ	MAX CONTINUOUS PRESSURE	MAX ROTATIONAL SPEED	A DIM.	B DIM.
		CM ³ /REV		BAR	RPM		
9 511 290 025	AZ-M-F-12-008-UQR12ML-S0018	8.2		210	4000	105.7	43.2
9 511 290 026	AZ-M-F-12-011-UQR12ML-S0018	11.3		210	3500	110.7	45.7
9 511 290 027	AZ-M-F-12-014-UQR12ML-S0018	14.4		210	3000	115.7	48.2
9 511 290 028	AZ-M-F-12-016-UQR12ML-S0018	16.5		210	3000	119.1	49.9
9 511 290 029	AZ-M-F-12-019-UQR12ML-S0018	19.6		180	3000	124.1	52.4
9 511 290 030	AZ-M-F-12-022-UQR12ML-S0018	22.9		170	Ⓓ 3000	129.5	55.1

REV	DESCRIPTION	DATE	BY	CKD
	RELEASE TO PRODUCTION (CRR0448)	04-23-03	D.N.	GRJ
A	CHANGE TO WOODRUFF KEY (CRR1193)	02-17-05	GRJ	GTW
B	CHANGE TO STRAIGHT KEY (CRR1476)	01-16-06	GRJ	
C	ADDED 88 MAX DIM. (CRR1453)	01-23-06	DN	GRJ
D	CHANGED PER ECN (ECN R7878-00206)	03-11-08	MEW	*



GENERAL NOTES:

- METRIC LINEAR MEASUREMENTS ARE IN MILLIMETERS
- ROTATION : BI-ROTATIONAL
Ⓓ
- INLET AND OUTLET PORTS CALL-OUT SHOWN FOR CLOCKWISE ROTATION. INLET AND OUTLET WOULD BE REVERSED FOR COUNTERCLOCKWISE ROTATION.
- MOTORS ARE EQUIPPED WITH INTERNAL CHECK VALVES, THEREFORE NO EXTERNAL DRAIN LINE IS REQUIRED. MOTORS SHOULD NOT BE USED IN SERIES APPLICATIONS.
- MOTOR OUTLET PRESSURE MUST NOT EXCEED 3 BAR CONTINUOUS PRESSURE.

DO NOT SCALE UNLESS OTHERWISE SPECIFIED TOLERANCES PER DIN 7180mm		DATE	DESCRIPTION	SCALE
D.N. 04-23-03		DATE	DESCRIPTION	FULL
GRJ 04-25-03		DATE	DESCRIPTION	
APPD		DATE	DESCRIPTION	
9510 290 044		DATE	DESCRIPTION	
CAD-ORIGINAL		DATE	DESCRIPTION	
Revisions thru CAD Only		DATE	DESCRIPTION	
METRIC		DATE	DESCRIPTION	
THIRD ANGLE PROJECTION		DATE	DESCRIPTION	
ALL PROPRIETARY RIGHTS IN THE SUBJECT MATTER HEREOF ARE RESERVED, AND NO PERMISSION IS GRANTED TO REPRODUCE THIS PRINT IN WHOLE OR PART, OR TO DISCLOSE ANY OF THE INFORMATION UPON IT TO OTHERS.		DATE	DESCRIPTION	
D		DATE	DESCRIPTION	
Rexroth Bosch Group		DATE	DESCRIPTION	
WOOSTER, OHIO 44691		DATE	DESCRIPTION	