

Seal kits for LUDV control block

M7-20 Series 3X



Seal kits
RE 64293-E

Edition: 08.2014
 Replaces: 04.2014

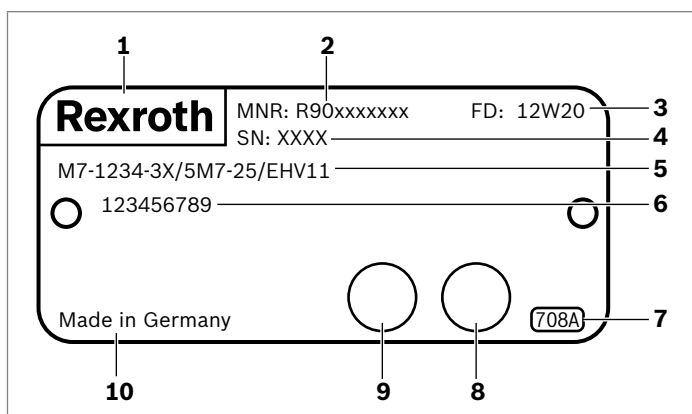
Security notice

All service and repair work shall be executed by Bosch Rexroth AG or specially trained personnel. Bosch Rexroth AG does not cover defects caused by incorrect installation, faulty maintenance or repair from the buyer's side or third parties.

Contents

Seal kit for 5-fold mono block	2
Seal kit for end plate	2
Seal kit for 1 LUDV directional valve	4
Seal kit for stroke limitation	5
Seal kit for 1 LS directional valve (slew)	6
Seal kit for 1 LUDV directional valve SX14	7

When ordering spare parts, please always state the complete model code (see name plate).



- | | |
|----------------------|----------------------------|
| 1 Word mark | 6 Customer material number |
| 2 Material number | 7 Unit/factory number |
| 3 Date of production | 8 Assembly stamp |
| 4 Serial number | 9 Inspection stamp |
| 5 Material code | 10 Indication of origin |

- 2 **M7-20** | Seal kits
Seal kit for 5-fold mono block

Seal kit for 5-fold mono block

Part Number:

R901071018

Item	Description	Dimensions	Quantity
113	Form seal	M12 × 1.5	10
130	O-ring	40.94 × 2.62	10
134	O-ring	15.54 × 2.62	20
166	O-ring	23.47 × 2.62	5
238	O-ring	29.7 × 2.8	2
254	O-ring	12.37 × 2.62	2
255	Seal	23.4 × 31.8 × 2.85	7

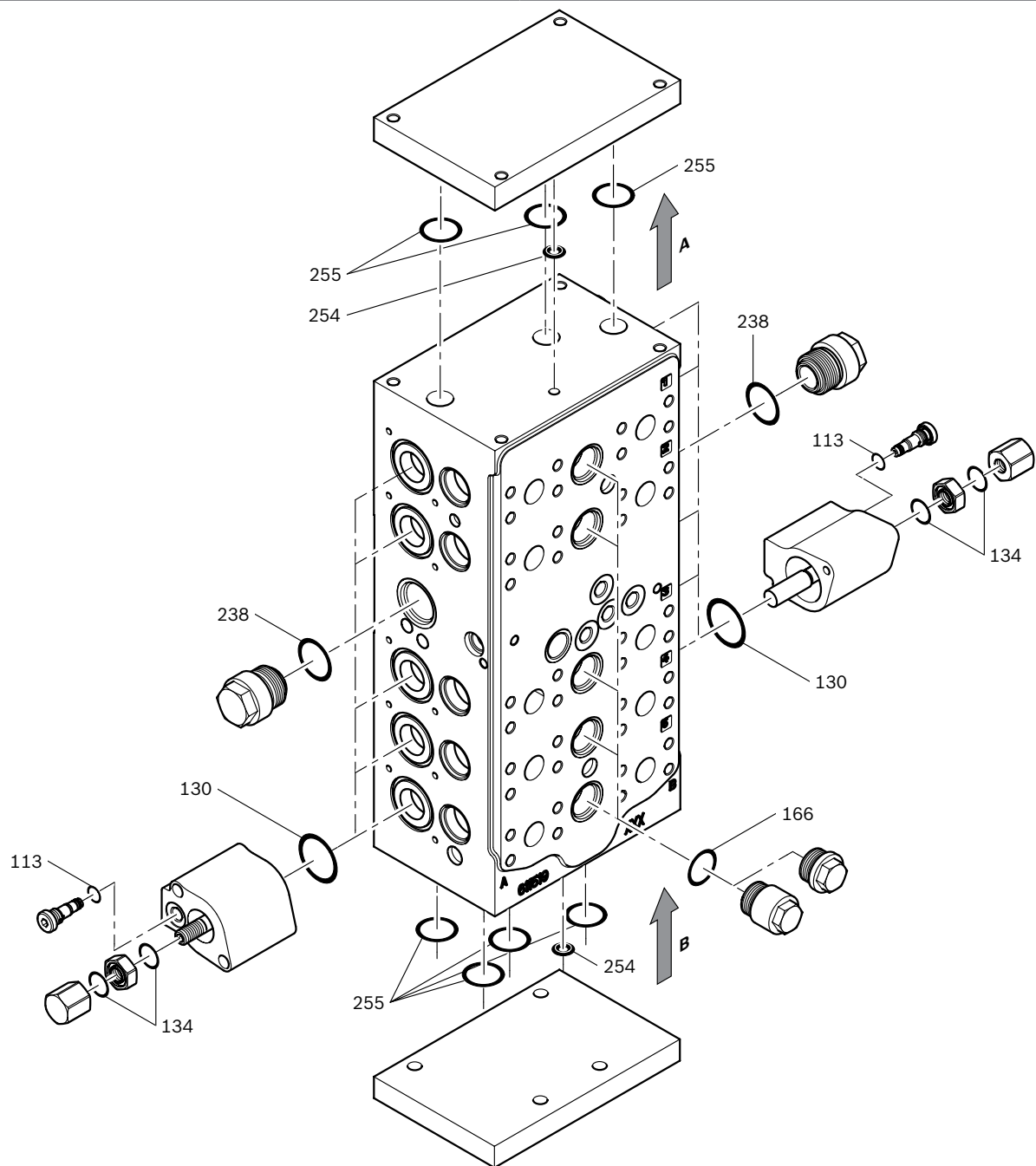
Seal kit for end plate

Part Number:

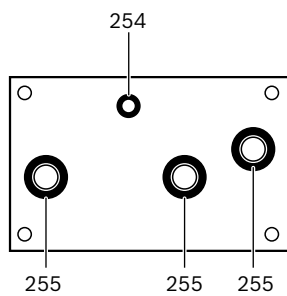
R901071622

Item	Description	Dimensions	Quantity
254	O-ring	12.37 × 2.62	1
255	Seal	23.4 × 31.8 × 2.85	3

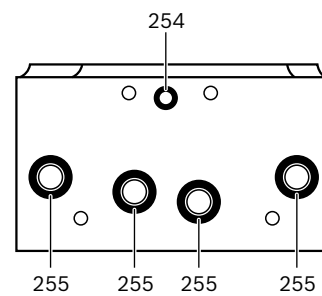
▼ Seal kit for 5-fold mono block and end plate



View A



View B



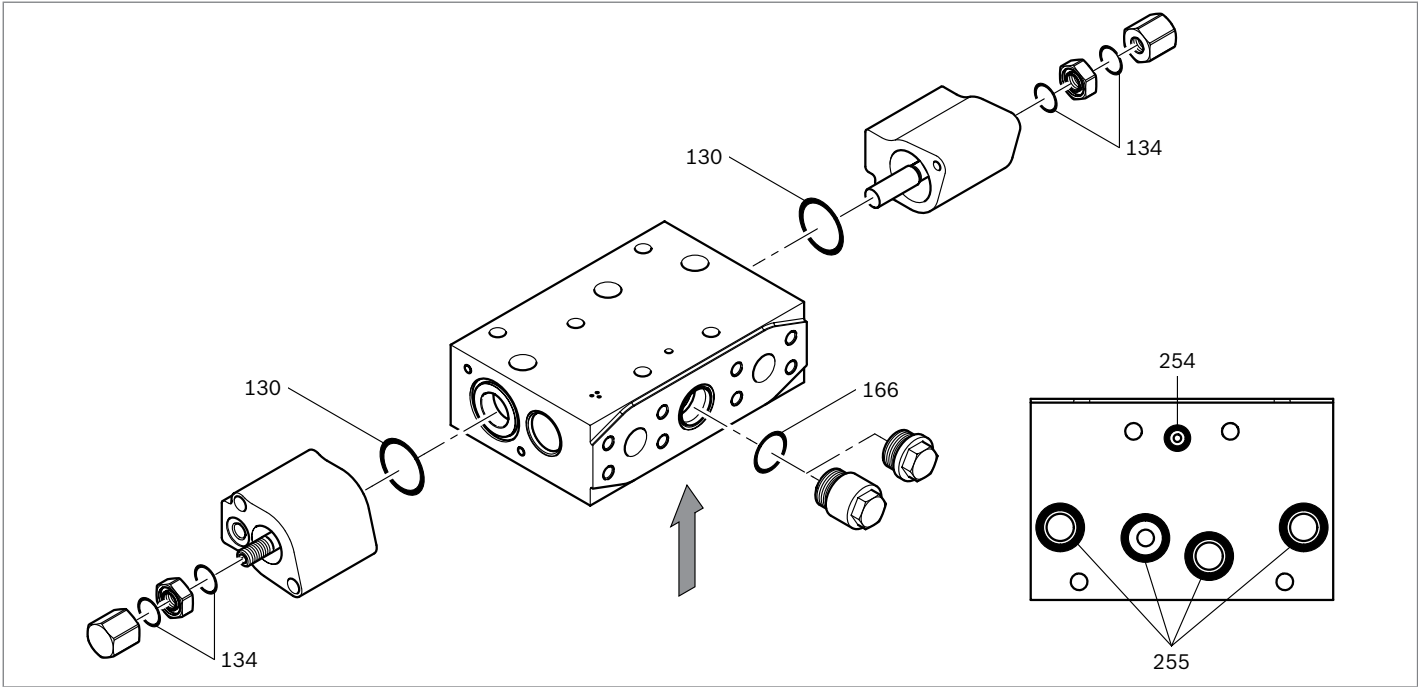
Seal kit for 1 LUDV directional valve

Part Number:

R901067682

Item	Description	Dimensions	Quantity
130	O-ring	40.94 × 2.62	2
134	O-ring	15.54 × 2.62	4
166	O-ring	23.47 × 2.62	1
254	O-ring	12.37 × 2.62	1
255	Seal	23.4 × 31.8 × 2.85	4

▼ Seal kit for 1 LUDV directional valve



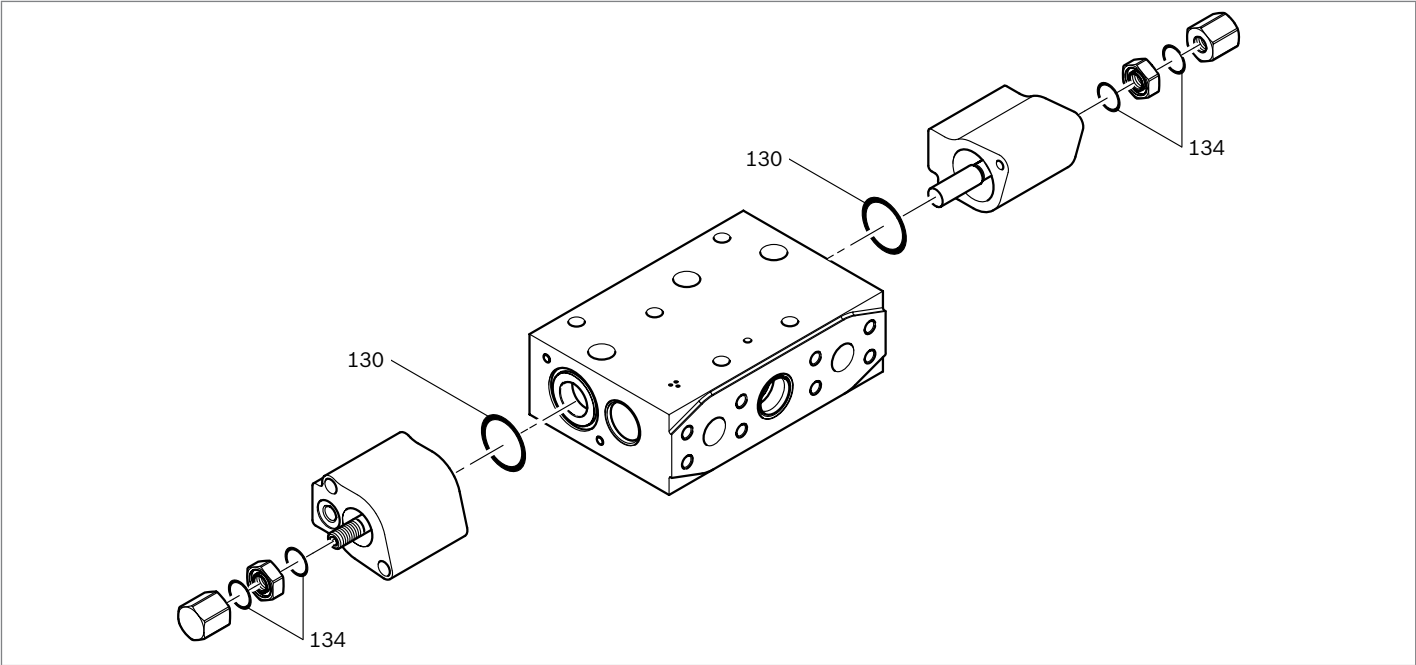
Seal kit for stroke limitation

Part Number:

R901383457

Item	Description	Dimensions	Quantity
130	O-ring	40.94 × 2.62	2
134	O-ring (old cover)	15.54 × 2.62	4
	O-ring (new cover)	14 × 1.78	4

▼ Seal kit for stroke limitation



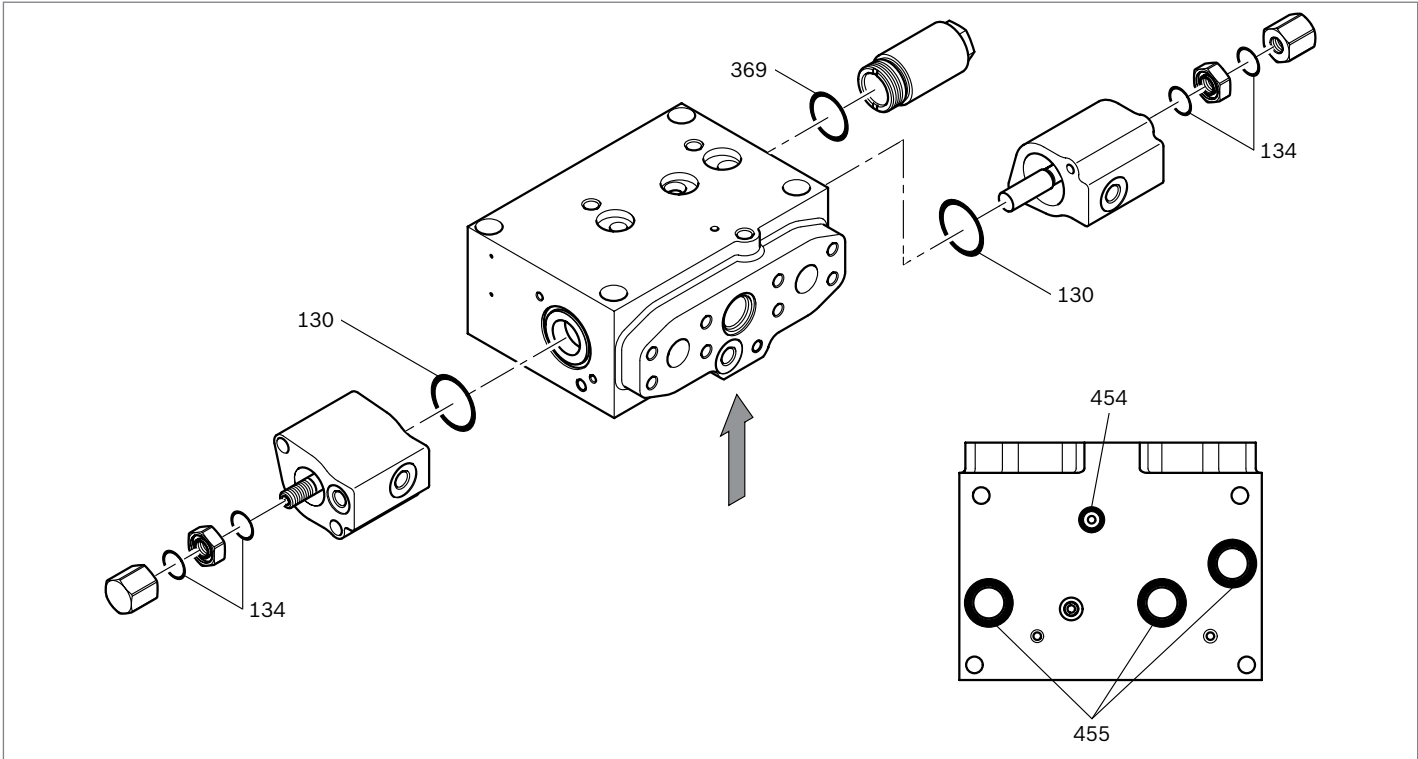
Seal kit for 1 LS directional valve (slew)

Part Number:

R901072296

Item	Description	Dimensions	Quantity
330	O-ring	40.94 × 2.62	2
334	O-ring	15.54 × 2.62	4
369	O-ring	28.24 × 2.62	1
454	O-ring	12.37 × 2.62	2
455	Seal	23.4 × 31.8 × 2.85	3

▼ Seal kit for 1 LS directional valve (slew)



Seal kit for 1 LUDV directional valve SX14

Part Number:

R907259807

Item	Description	Dimensions	Quantity
611	O-ring	10.77 × 2.62	1
612	O-ring	29.82 × 2.62	3

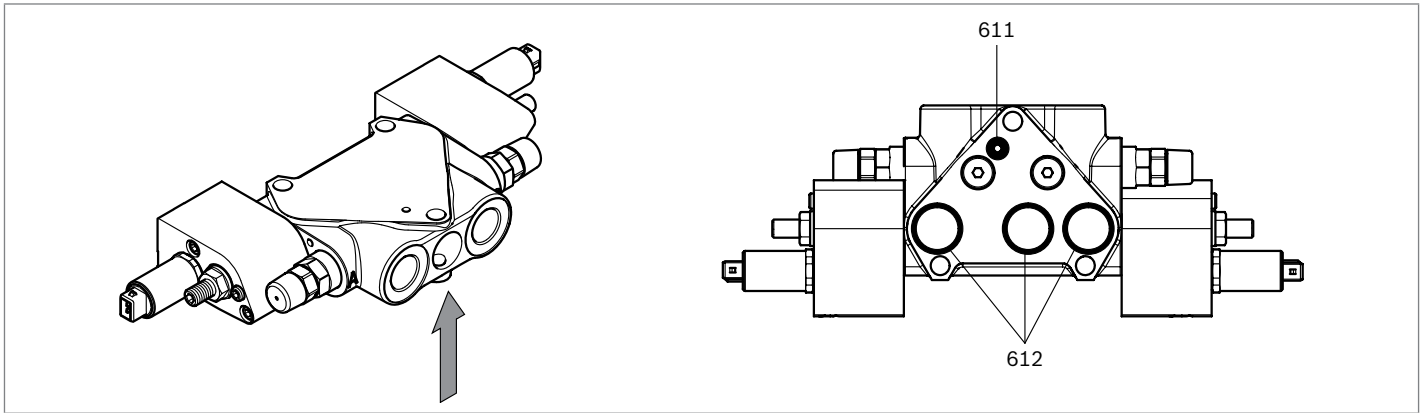
Seal kit for 1 LUDV directional valve SX14

Part Number:

R901399728

Item	Description	Dimensions	Quantity
611	O-ring	10.77 × 2.62	1
612	Seal ring	28.9 × 34.3 × 2.2	3

▼ Seal kit for 1 LUDV directional valve SX14



Note

Seal kit for complete directional valve SX14 see spare parts list 64125-E.

- 8 **M7-20** | Seal kits
Seal kit for 1 LUDV directional valve SX14

Bosch Rexroth AG

Zum Eisengießer 1
97816 Lohr am Main, Germany
Phone +49 9352 18-0
info.ma@boschrexroth.de
www.boschrexroth.com

© This document, as well as the data, specifications and other information set forth in it, are the exclusive property of Bosch Rexroth AG. It may not be reproduced or given to third parties without its consent.
The data specified above only serve to describe the product. No statements concerning a certain condition or suitability for a certain application can be derived from our information. The information given does not release the user from the obligation of own judgment and verification. It must be remembered that our products are subject to a natural process of wear and aging.