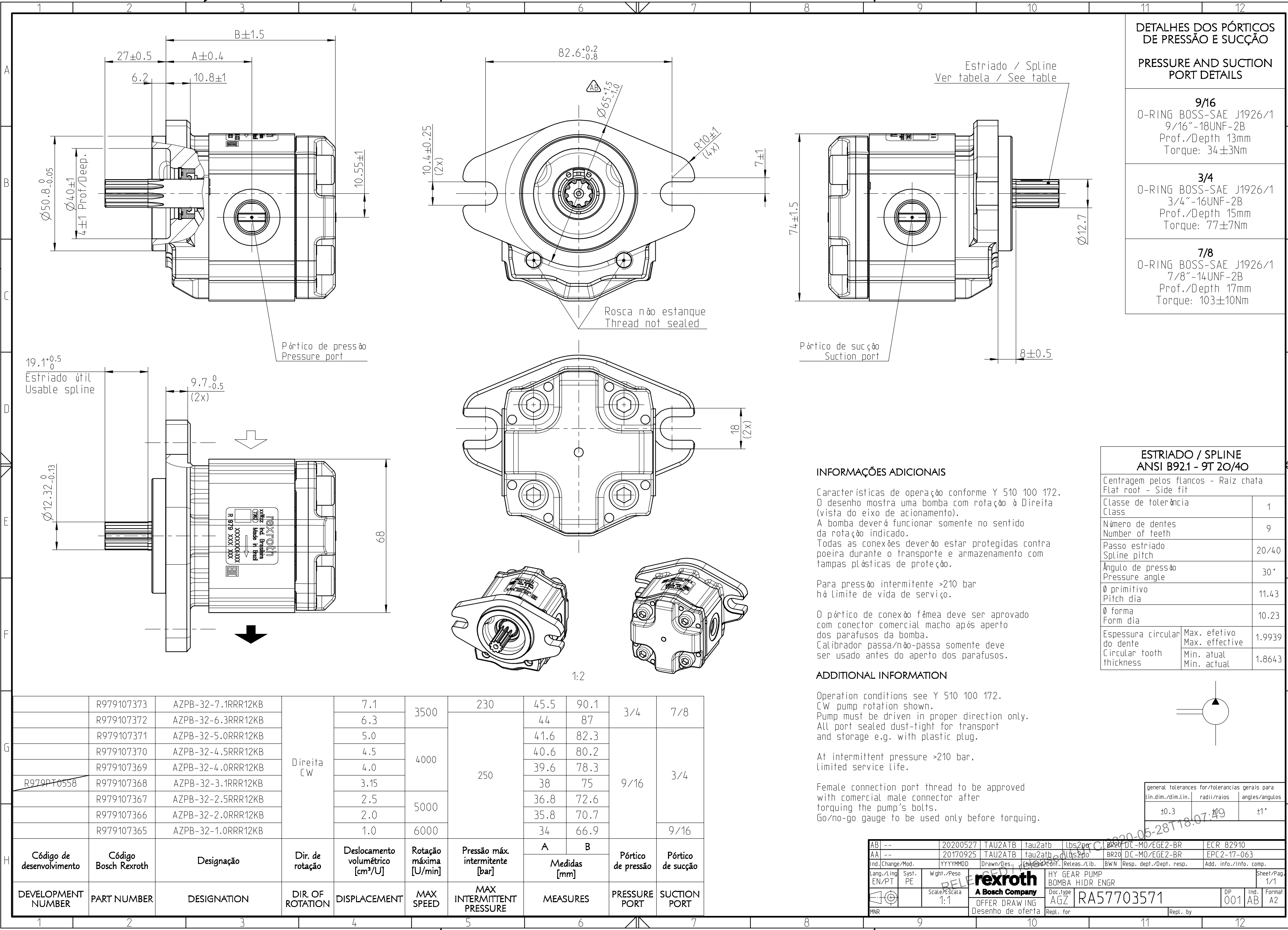


© Bosch Rexroth AG. todos os direitos reservados.
Detalhes todos os direitos de disponibilidade, cópia e transmissão a terceiros.

© This document, as well as the data, specifications and other information set forth in it, are the exclusive property of Bosch Rexroth AG. It may not be reproduced or given to third parties without its consent.



	R979107373	AZPB-32-7.1RRR12KB	Direita CW	7.1	3500	230	45.5	90.1	3/4	7/8
	R979107372	AZPB-32-6.3RRR12KB		6.3		250	44	87		
	R979107371	AZPB-32-5.0RRR12KB		5.0			4000	41.6		
	R979107370	AZPB-32-4.5RRR12KB		4.5	40.6			80.2		
	R979107369	AZPB-32-4.0RRR12KB		4.0	39.6		78.3			
R979PT0558	R979107368	AZPB-32-3.1RRR12KB		3.15	5000		38	75		
	R979107367	AZPB-32-2.5RRR12KB		2.5			36.8	72.6		
	R979107366	AZPB-32-2.0RRR12KB		2.0		35.8	70.7			
	R979107365	AZPB-32-1.0RRR12KB		1.0	6000	34	66.9		9/16	
Código de desenvolvimento	Código Bosch Rexroth	Designação	Dir. de rotação	Deslocamento volumétrico [cm³/U]	Rotação máxima [U/min]	Pressão máx. intermitente [bar]	A	B	Pórtico de pressão	Pórtico de sucção
							Medidas [mm]			
DEVELOPMENT NUMBER	PART NUMBER	DESIGNATION	DIR. OF ROTATION	DISPLACEMENT	MAX SPEED	MAX INTERMITTENT PRESSURE	MEASURES		PRESSURE PORT	SUCTION PORT

AB1 --

AA1 --

Ind. Change/Mod.

Lang./Ling.

EN/PT

20200527

20170925

YYYYMMDD

Syst. PE

Wght./Peso

Scale/Escala

1:1

TAU2ATB

TAU2ATB

Drawn/Des.

Checked/Conf.

Releas./Lib.

Scale/Escala

1:1

lbs2per

lbs2per

Checked/Conf.

Releas./Lib.

Scale/Escala

1:1

BR20 DC-MO/EGE2-BR

BR20 DC-MO/EGE2-BR

Repl. for

Repl. by

ECR 82910

EPC2-17-063

Add. info./Info. comp.

Doc.type

AGZ

RA57703571

DP

001

Ind. AB

Format A2

HY GEAR PUMP

BOMBA HIDR ENGR

OFFER DRAWING

Desenho de oferta

Sheet/Pag.

1/1

RECEIVED

2020-05-28T18:07:49