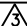
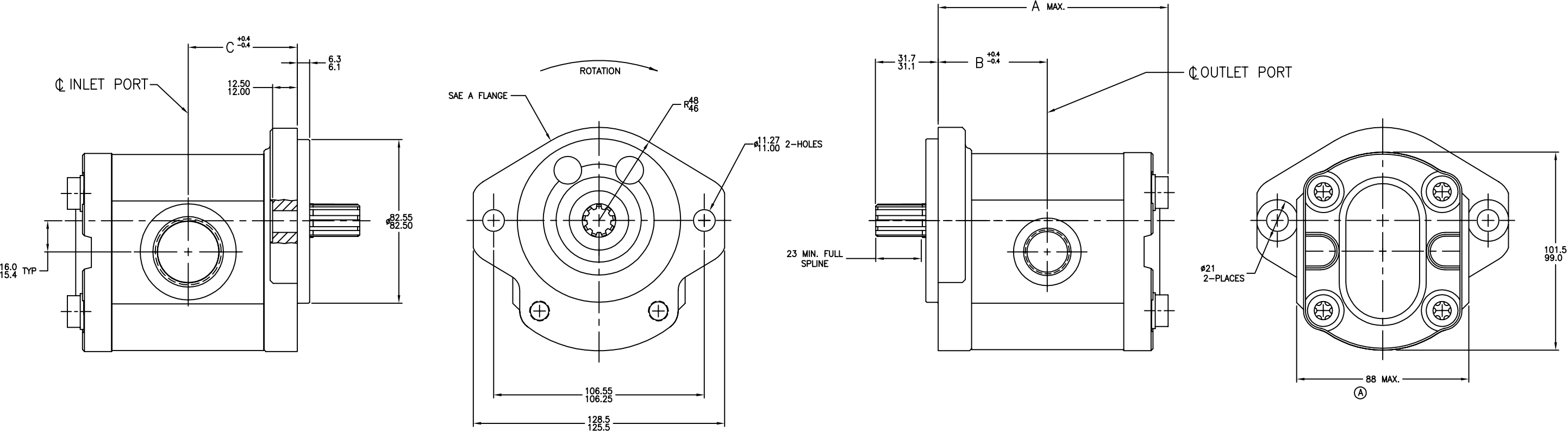






8		7		6			5	4	3	2	1
MODEL NUMBER	CATALOG NUMBER	DISPLACEMENT	OUTPUT FLOW 	A DIM.	B DIM.	C DIM.	INLET PORT (SAE O-RING BOSS)	OUTLET PORT (SAE O-RING BOSS)			
		CM³/REV	LITERS/MIN								
9 510 290 114	AZ-P-F-22-028-RRR12MB	28.5	55.6	136.4	65.6	65.6	1.312-12UN-2B THD.	.875-14 UNF-2B THD.			

REV	DESCRIPTION	DATE	BY	CKD
	RELEASE TO PRODUCTION (CRR0304)	01-14-03	GRJ	*
A	WAS 87 MAX (CRR1453)	01-18-06	DN	GRJ
B	ADD OPERATING CONDITIONS (ECN R7878-00055)	04-04-07	MEW	*



 **EXTERNAL INVOLUTE SPLINE DATA**
FLAT ROOT SIDE FIT
FLAT ROOT SIDE FIT
NO. OF TEETH 9
SPLINE PITCH 16/32
PRESSURE ANGLE 30°
PITCH DIA. .56250 REF.
MAJOR DIA. .6034-.6085
FORM DIA. .504
CIRCULAR TOOTH THICKNESS:
MAX.EFFECTIVE .0942
MIN. ACTUAL .0916

- GENERAL NOTES:**
- METRIC LINEAR MEASUREMENTS ARE IN MILLIMETERS
 - ROTATION VIEWING DRIVE END: CLOCKWISE
 -  OUTPUT FLOWS ARE AT 2000 RPM & 138 BAR USING SAE NO. 10 OIL AT 48°C
 - MAX. RATED SPEED: 2250 RPM
 - MAX. RATED PRESSURE: 170 BAR
 -  EXTERNAL INVOLUTE SPLINE DATA IN DECIMAL INCHES
 - OPERATING CONDITIONS PER Y510 201 598 

9 510 290 114

DO NOT SCALE UNLESS OTHERWISE SPECIFIED: TOLERANCES PER DIN 7180mm		REV	01-14-03	DATE	DESCRIPTION	SCALE	FULL
LINEAR DIMENSION TOL.		APPD		DATE	TITLE		
0- 6- ±0.1				PUMP-GEAR, INSTALLATION			
6- 30- ±0.2				9 510 290 114		SHEET 1	
30- 120- ±0.3						OF 1	
120- 400- ±0.5							
400-1000- ±0.8							
ANGLES ± 1°							
METRIC							
THIRD ANGLE PROJECTION							