

Proportional directional valves, pilot-operated, with electrical position feedback and integrated electronics (OBE)

Type 4WRKE



- ▶ Size 10 ... 35
- ▶ Component series 3X
- ▶ Maximum operating pressure 350 bar
- ▶ Maximum flow 4700 l/min



Features

- ▶ Operation by means of proportional solenoids
- ▶ Control of flow direction and size
- ▶ For subplate mounting
- ▶ Porting pattern according to ISO 4401
- ▶ Electrical position feedback
- ▶ Spring-centered main control spool
- ▶ Pilot control by means of proportional directional valve
- ▶ Main stage with position control
- ▶ CE conformity according to EMC Directive 2014/30/EU

Contents

Features	1
Ordering code	2, 3
Symbols	3, 4
Function, section	5, 6
Technical data	6 ... 10
Block diagram/controller function block	11 ... 13
Electrical connections and assignment	14
Characteristic curves	15 ... 20
Dimensions	21 ... 27
Accessories	28
Project planning information	28
Further information	28

Ordering code

01	02	03	04	05	06	07	08	09	10	11	12	13	14	15	16	
4	WRK	E					-	3X	/	6E	G24		K31	/	D3	*

01	4 main ports	4
02	Proportional directional valves, pilot-operated	WRK
03	With integrated electronics (OBE)	E
04	Size 10	10
	Size 16	16
	Size 25	25
	Size 27	27
	Size 32	32
	Size 35	35
05	Symbols; possible version see page 3	

Rated flow

06	- Size 10		
	25 l/min (only symbol E, E1-, W6-, W8- and EA as well as version "L")	25	
	50 l/min	50	
	100 l/min	100	◇
	- Size 16		
	150 l/min	150	
	220 l/min	220	◇
	- Size 25		
	220 l/min	220	
	350 l/min	350	◇
	- Size 27		
	500 l/min	500	◇
	- Size 32		
	400 l/min	400	
	600 l/min	600	◇
	- Size 35		
	1000 l/min	1000	◇

Flow characteristic

07	Linear	L	◇
	Linear with fine control range	P	
08	Component series 30 ... 39 (30 ... 39: unchanged installation and connection dimensions)	3X	
09	Proportional solenoid with detachable coil	6E	
10	Direct voltage 24 V	G24	

Pilot oil flow

11	External pilot oil supply, external pilot oil return	no code	◇
	Pilot oil supply internal, pilot oil return external	E	
	Internal pilot oil supply, internal pilot oil return	ET	◇
	External pilot oil supply, internal pilot oil return	T	

Electrical connection

12	Connector, 7-pole (6 + PE) according to EN 175201-804	K31 ¹⁾
----	---	--------------------------

Ordering code

01	02	03	04	05	06	07	08	09	10	11	12	13	14	15	16
4	WRK	E				-	3X	/	6E	G24		K31	/	D3	*

Electrical interface


13	Command value input ± 10 V; actual value output ± 10 V	A1	◇
	Command value input 4 ... 20 mA; actual value output 4 ... 20 mA	F1	
	Command value input ± 10 V; actual value output ± 10 V, enable signal (pin C)	A5 ²⁾	
14	With pressure reducing valve type ZDR 6 DP0-4X/40YM-W80 (permanently set)	D3	

Seal material (observe compatibility of seals with hydraulic fluid used, see page 8)

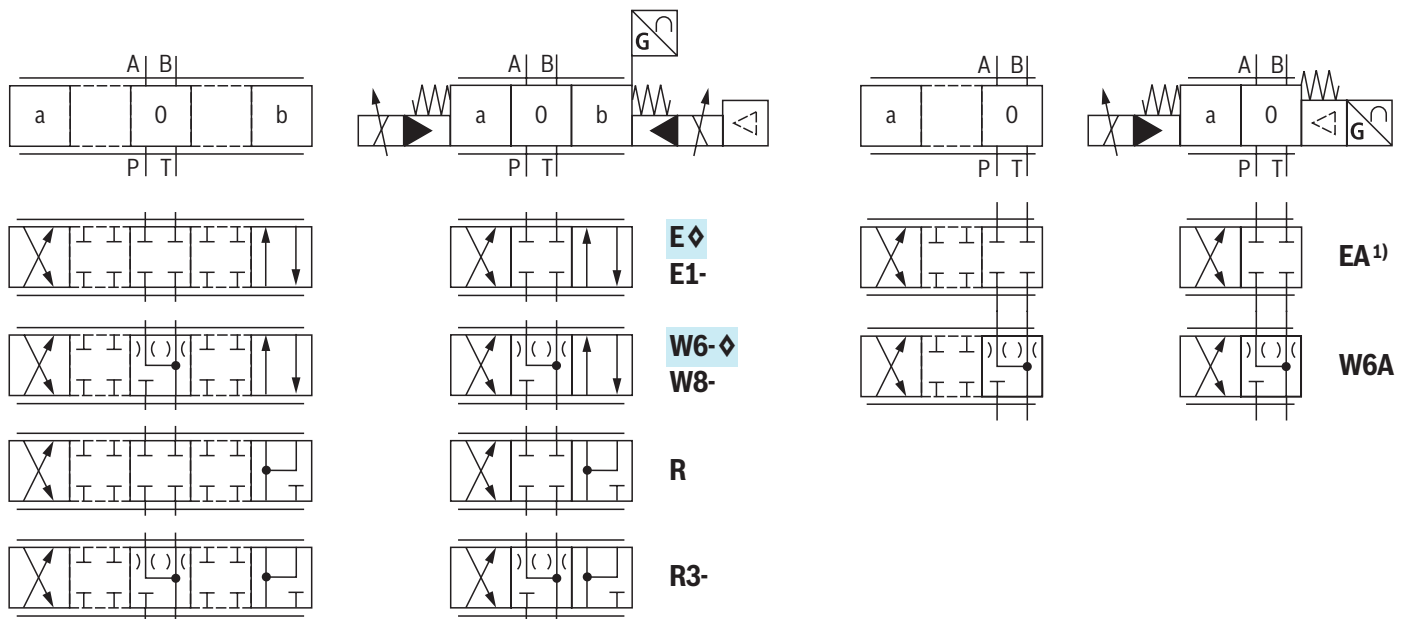
15	NBR seals	M	◇
	FKM seals	V	
16	Further details in the plain text	*	

1) Mating connectors can be ordered separately, see page 28.

2) See "Project planning information" page 28.

 **Notice:** ◇ = Preferred type

Symbols



With symbols E1- and W8-:

P→A: qV max B→T: $qV/2$
P→B: $qV/2$ A→T: qV max

With symbols R and R3-:

P→A: qV max B→P: $qV/2$
P→B: $qV/2$ A→T: qV max

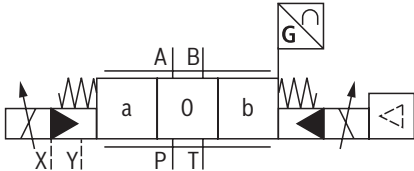
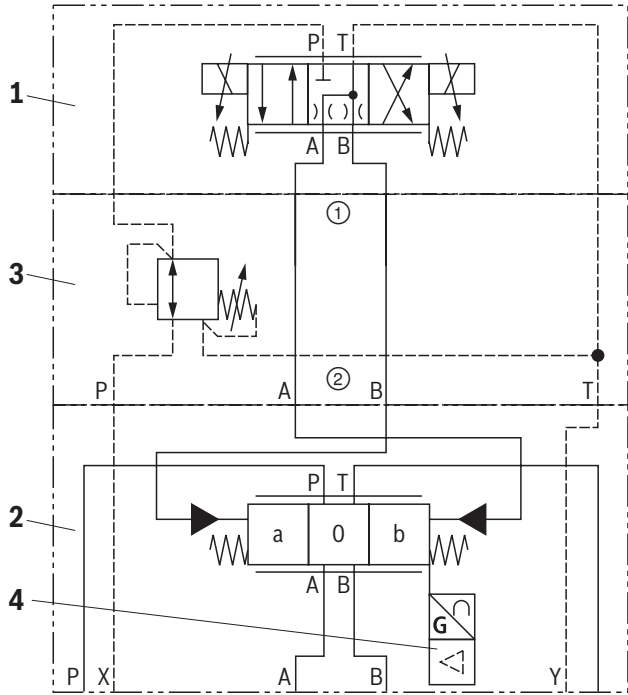
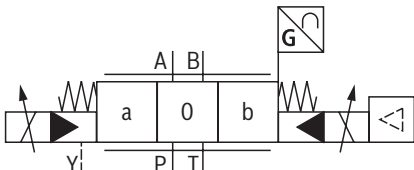
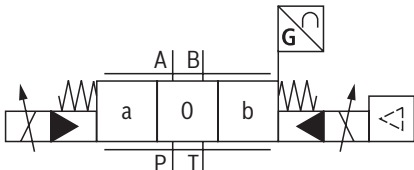
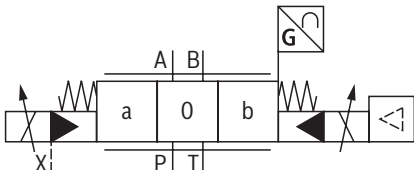
1) Example:

Symbol E with spool position "a" ordering code **..EA..**

Information:

- Representation according to ISO 1219-1. Hydraulic interim positions are shown by dashes.
- With symbols W6-, W8- and R3-, there is a connection from A→T and B→T with approx. 2% of the relevant nominal cross-section in zero position.

Symbols

Version	Simple	Detailed
"no code"		
"E"		
"ET"		
"T"		



Notice:
Representation according to ISO 1219-1.

- 1 Pilot control valve type 4WRAP 6...
- 2 Main valve
- 3 Pressure reducing valve type ZDR 6 DP0-4X/40YM-W80
- 4 Integrated electronics (OBE)

Function, section

Valves of type 4WRKE are 2-stage proportional directional valves. They control the flow direction and size.

The main stage is position-controlled so that the control spool position is independent from flow forces also in the case of bigger flows.

The valves mainly consist of the pilot control valve (1), the housing (8), the main control spool (7), the covers (5 and 6), the centering spring (4), the inductive position transducer (9) and the pressure reducing valve (3).

If there is no input signal, the main control spool (7) will be kept in the central position by the centering spring (4). Both control chambers in the covers (5 and 6) are connected to port T via the valve control spool (2).

The main control spool (7) is connected to suited control electronics via the inductive position transducer (9).

Both the position change of the main control spool (7) and the change of the command value at the junction summing of the amplifier create a voltage difference.

During the comparison of command value and actual value, a possible control deviation is determined via the electronics and the proportional solenoid of the pilot control valve (1) is supplied with current. The current induces a force in the solenoid which operates the control spool via a plunger in a row. The flow which is activated via the control cross-sections leads to an adjustment of the main control spool.

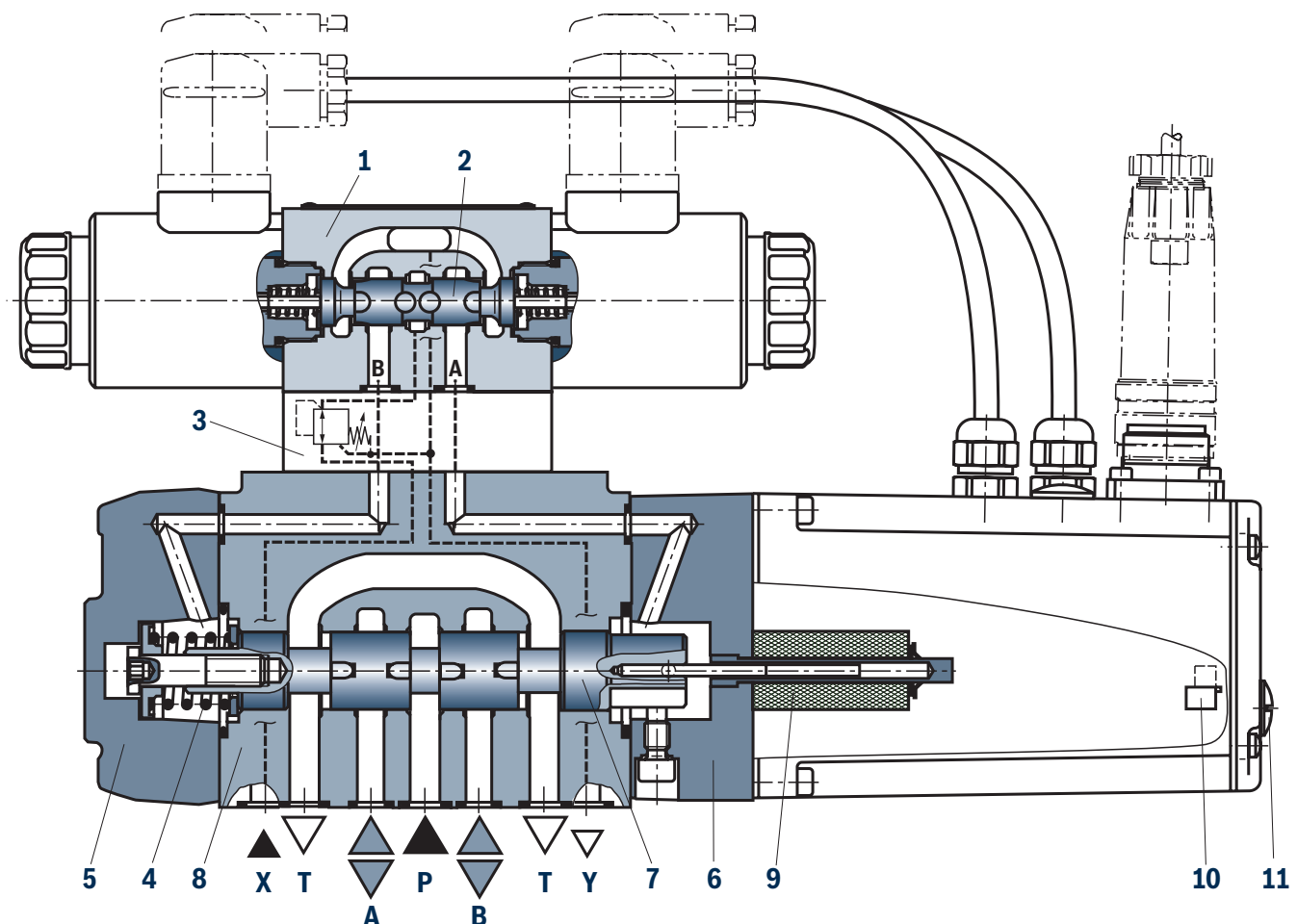
The main control spool (7) with the core of the inductive position transducer (9) attached to it is displaced until the actual value corresponds to the command value.

In controlled state, the main control spool (7) is force-balanced and kept in this controlled position.

The control spool stroke and the control opening change proportionally to the command value.

The control electronics is integrated in the valve.

By adjusting the valve and electronics, the deviation in series production of the devices is kept low.



Function, section

Information:

- ▶ The tank lines must not be allowed to run empty; with corresponding installation conditions, a preload valve (preload pressure approx. 2 bar) must be installed.
- ▶ The zero point adjustment at **"zero point main stage"** (10) is made at the factory and can be adjusted in a range of $\pm 30\%$ of the nominal stroke via a potentiometer in the control electronics. Access with the integrated control electronics by removing a front-side plug screw (11) on the cover housing.
- ▶ When the pilot control valve or the control electronics are exchanged, they are to be re-adjusted. All adjustments may be implemented by instructed experts only.
- ▶ Changes in the zero point may result in damage to the system and may only be implemented by instructed specialists.

Technical data

(For applications outside these values, please consult us!)

General							
Size	NG	10	16	25	27	32	35
Type of connection	Subplate mounting						
Porting pattern		ISO 4401-05-05-0-05	ISO 4401-07-07-0-05	ISO 4401-08-08-0-05	ISO 4401-08-08-0-05	ISO 4401-10-09-0-05	ISO 4401-10-09-0-05
Weight	kg	9	11	18	19.5	37.5	75
Installation position		Any					
Ambient temperature range	°C	-20 ... +50					
Storage temperature range (with UV protection)	°C	+5 ... +40					
Maximum storage time	Years	1 (if the storage conditions are observed, refer to the operating instructions 07600-B)					
Maximum relative humidity (no condensation)	%	95					
Protection class according to EN 60529		IP65 (if suitable and correctly mounted mating connectors are used)					
Maximum surface temperature	°C	150					
MTTF _D values according to EN ISO 13849	Years	75 (for further details see data sheet 08012)					
Sine test according to EN 60068-2-6		10 ... 2000 Hz / maximum 10 g / 10 cycles / 3 axes					
Noise test according to EN 60068-2-64		20 ... 2000 Hz / 10 g _{RMS} / 30 g peak / 24 h / 3 axes					
Transport shock according to EN 60068-2-27		15 g / 11 ms / 3 shocks / 3 axes					
Conformity	<ul style="list-style-type: none"> ▶ CE according to EMC Directive 2014/30/EU, tested according to ▶ RoHS Directive 	EN 61000-6-2 and EN 61000-6-3					
		2011/65/EU ¹⁾					

¹⁾ The product fulfills the substance requirements of the RoHS Directive 2011/65/EU.

Technical data

(For applications outside these values, please consult us!)

Hydraulic									
Size		NG	10	16	25	27	32	35	
Maximum operating pressure	► Ports A, B, P		25 ... 350						
	– Pilot control valve	Pilot oil supply bar							
	– Main valve	bar	350	350	350	270	350	350	
	► Port T ²⁾	External pilot oil supply bar	315	250	250	210	250	350	
		Internal pilot oil supply bar	Static < 10 (pilot control valve)						
	► Port Y	bar	Static < 10 (pilot control valve)						
Hydraulic fluid			See table, page 8						
Hydraulic fluid temperature range			°C	–20 ... +80					
Viscosity range	► Recommended	mm²/s	30 ... 45						
	► Maximum admissible	mm²/s	20 ... 380						
Maximum admissible degree of contamination of the hydraulic fluid; cleanliness class according to ISO 4406 (c)	► Pilot control valve		Class 17/15/12 ³⁾						
	► Main valve		Class 20/18/15 ³⁾						
Rated flow (Δp = 5 bar per control edge; ±10%)			25 50 100	150 220	220 350	500	400 600	1000	
Maximum flow			l/min	170	460	870	1000	1600	4700
Maximum leakage flow (inlet pressure 100 bar)	► Symbol E, E1-, R		0.13 0.27 0.51 0.51 0.3 1.5						
	– Main valve	l/min							
	– Main valve + pilot control valve	l/min	0.43 0.57 0.81 0.81 0.6 1.8						
	► Symbol W6-, W8-, R3-		0.25 0.55 1.0 1.0 0.6 3.0						
	– Main valve	l/min							
– Main valve + pilot control valve	l/min	0.55 0.85 1.3 1.3 0.9 3.3							
Pilot flow (at port X and Y with stepped input signal from 0 ... 100%; 315 bar)			l/min	7	9	12	12	14	17

²⁾ See "Project planning information" page 28.

³⁾ The cleanliness classes specified for the components must be adhered to in hydraulic systems. Effective filtration prevents faults and at the same time increases the life cycle of the components.

Technical data

(For applications outside these values, please consult us!)

Hydraulic fluid		Classification	Suitable sealing materials	Standards	Data sheet
Mineral oils		HL, HLP, HLPD, HVLP, HVLPD	NBR, FKM	DIN 51524	90220
Bio-degradable	► Insoluble in water	HETG	FKM	ISO 15380	90221
		HEES	FKM		
	► Soluble in water	HEPG	FKM	ISO 15380	
Flame-resistant	► Water-free	HFDU (glycol base)	FKM	ISO 12922	90222
		HFDU (ester base)	FKM		
		HFDR	FKM		
	► Containing water	HFC (Fuchs: Hydrotherm 46M, Renosafe 500; Petrofer: Ultra Safe 620; Houghton: Safe 620; Union: Carbide HP5046)	NBR	ISO 12922	90223

**Important information on hydraulic fluids:**

- For further information and data on the use of other hydraulic fluids, please refer to the data sheets above or contact us.
- There may be limitations regarding the technical valve data (temperature, pressure range, life cycle, maintenance intervals, etc.).
- The ignition temperature of the hydraulic fluid used must be 50 K higher than the maximum surface temperature.
- **Bio-degradable and flame-resistant – containing water:**
If components with galvanic zinc coating (e.g. version "J3" or "J5") or parts containing zinc are used, small amounts of dissolved zinc may get into the hydraulic system and cause accelerated aging of the hydraulic fluid. Zinc soap may form as a chemical reaction product, which may clog filters, nozzles and solenoid valves – particularly in connection with local heat input.

► Flame-resistant – containing water:

- Due to an increased cavitation tendency with the use of HFC hydraulic fluids, the life cycle of the component may be reduced by up to 30% as compared to use with HLP mineral oil. In order to reduce the cavitation effect, it is recommended – if possible, specific to the installation – to back up the return flow pressure in ports T to approx. 20% of the pressure differential at the component.
- Dependent on the hydraulic fluid used, the maximum ambient and hydraulic fluid temperature must not exceed 50 °C. In order to reduce the heat input into the component, the command value profile is to be adjusted for proportional and high-response valves.

Static/dynamic

Hysteresis	%	≤1
Range of inversion	%	≤0.5
Response sensitivity	%	≤0.5

Technical data

(For applications outside these values, please consult us!)

Electrical, integrated electronics (OBE) – interface "A1"				
Supply voltage	► Nominal value		VDC	24
	► Minimum		VDC	18
	► Maximum		VDC	36
	► Maximum residual ripple		Vpp	2.5
	► Maximum power consumption		VA	40
	► Current consumption during operation 4)	Rated current	Aeff	<2
		Impulse current	A	3
	► Fuse protection, external		AT	2.5 (time-lag)
Charging capacity (externally effective)			µF	<1000
Relative duty cycle time according to VDE 0580			S1 (continuous operation)	
Functional ground and screening			See pin assignment, page 14	
Maximum voltage of the differential inputs against 0 V			D→B; E→B (max. 18 V)	
Command value (differential amplifier)	► Measurement range		V	±10
	► Input resistance		kΩ	>100
Actual value (test signal)	► Output range		V	±10
	► Minimum load impedance		kΩ	>1

Electrical, integrated electronics (OBE) – interface "F1"				
Supply voltage	► Nominal value		VDC	24
	► Minimum		VDC	18
	► Maximum		VDC	36
	► Maximum residual ripple		Vpp	2.5
	► Maximum power consumption		VA	40
	► Current consumption during operation ⁴⁾	Rated current	A _{eff}	<2
		Impulse current	A	3
	► Fuse protection, external		A _T	2.5 (time-lag)
Charging capacity (externally effective)			μF	<1000
Relative duty cycle time according to VDE 0580			S1 (continuous operation)	
Functional ground and screening			See pin assignment, page 14	
Maximum voltage of the differential inputs against 0 V			D→B; E→B (max. 18 V)	
Command value	► Input current range		mA	4 ... 20
	► Input resistance		Ω	200
Actual value (test signal)	► Output range		mA	4 ... 20
	► Maximum load		Ω	500

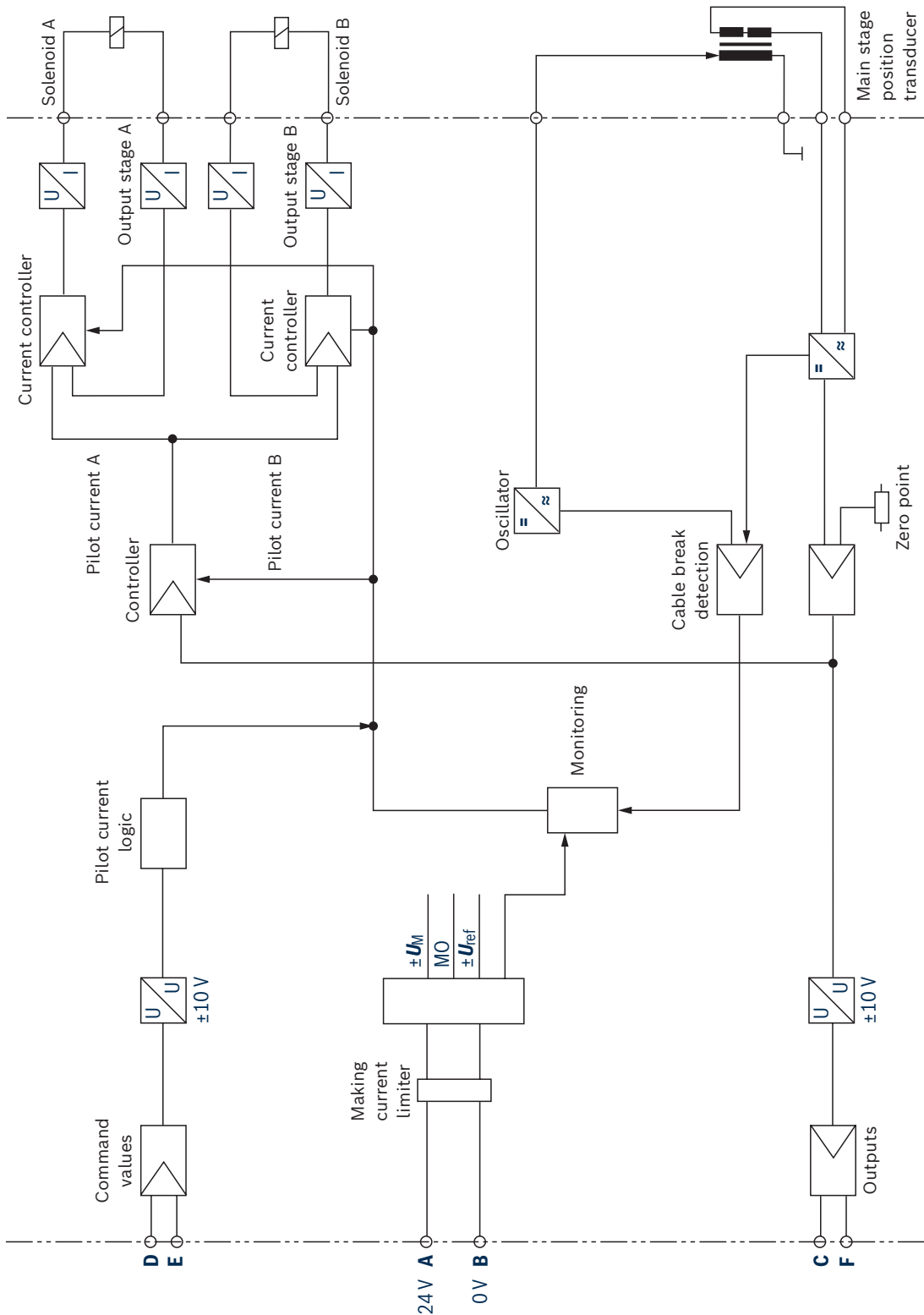
⁴⁾ The making current peak is usually higher (depending on power supply unit, supply line, and capacities).

Technical data
(For applications outside these values, please consult us!)

Electrical, integrated electronics (OBE) – interface "A5"				
Supply voltage (U_B)	▶ Nominal value	VDC	24	
	▶ Minimum	VDC	18	
	▶ Maximum	VDC	36	
	▶ Maximum residual ripple	Vpp	2.5	
	▶ Maximum power consumption	VA	40	
	▶ Current consumption during operation ⁴⁾	Rated current	A_{eff}	<2
		Impulse current	A	3
	▶ Fuse protection, external	A_T	2.5 (time-lag)	
Charging capacity (externally effective)		μF	<1000	
Relative duty cycle time according to VDE 0580			S1 (continuous operation)	
Functional ground and screening			See "Project planning information", page 28	
Command value	▶ Input current range	V	± 10	
	▶ Input resistance	k Ω	>100	
Actual value (test signal)	▶ Output range	V	± 10	
	▶ Maximum load	k Ω	>1	
Enable	▶ Low level range	V	–3 ... 5	
	▶ High level range	V	11 ... 36	
	▶ Maximum current consumption at high level	mA	7.25 ($U_B = 24\text{ V}$) 11 ($U_{B\text{ max}}$)	

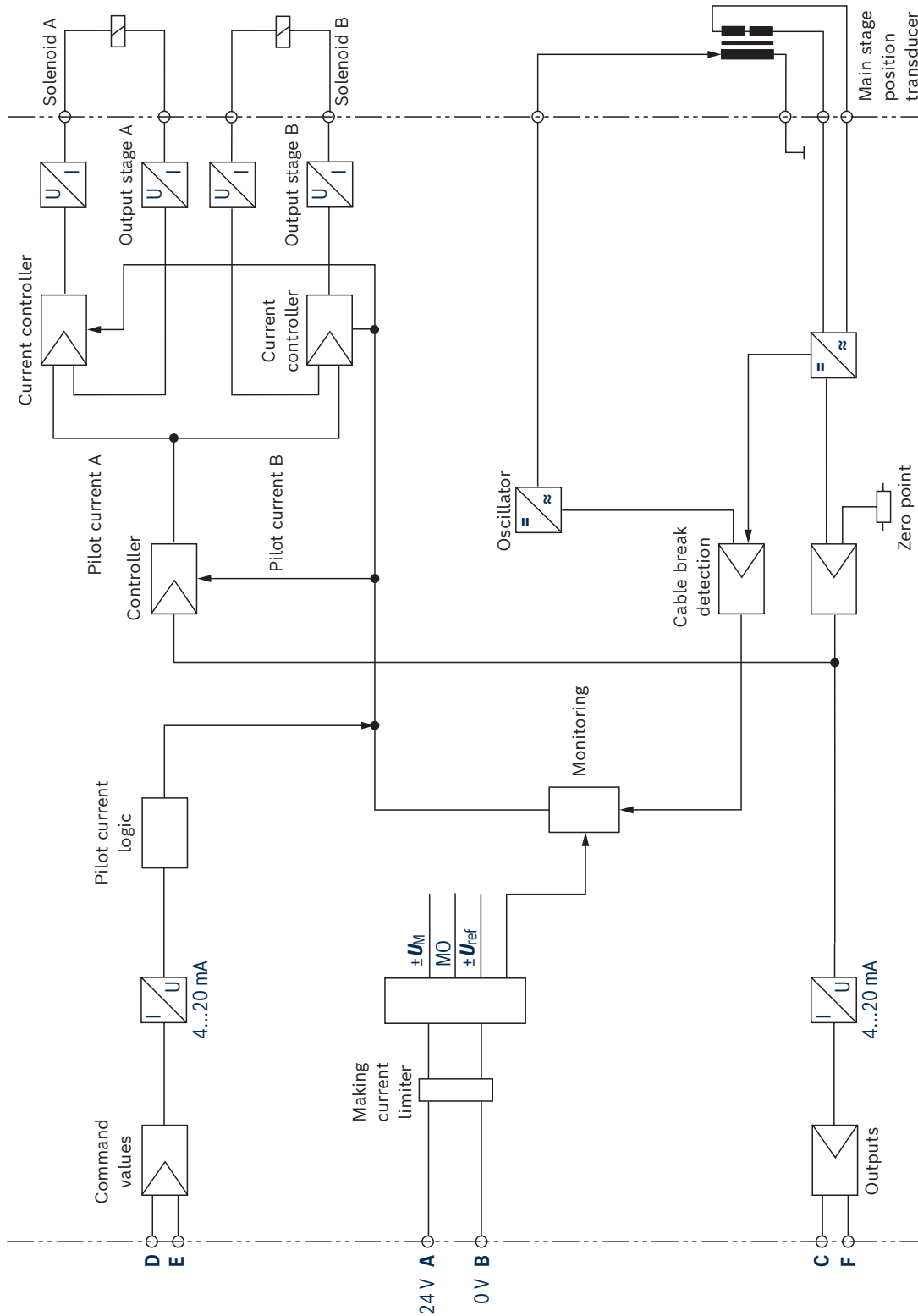
⁴⁾ The making current peak is usually higher (depending on power supply unit, supply line, and capacities).

Block diagram/controller function block: Version "A1"

**Notice:**

Electrical signals provided via valve electronics (e.g. actual value) must not be used to switch off safety-relevant machine functions.

Block diagram/controller function block: Version "F1"



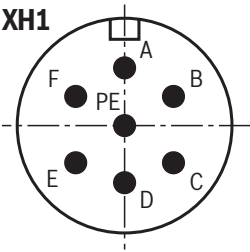
Notice:

Electrical signals provided via valve electronics (e.g. actual value) must not be used to switch off safety-relevant machine functions.

Electrical connections and assignment

Connector pin assignment "XH1", 6-pole + PE according to DIN 43563

Pin	Interface assignment		
	"A1"	"F1"	"A5"
A	Supply voltage	Supply voltage	Supply voltage
B	GND	GND	GND, reference potential actual value
C	Reference potential actual value	Reference potential actual value	Enable input
D	Command value	Command value	Command value
E	Reference potential command value	Reference potential command value	Reference potential command value
F	Actual value	Actual value	Actual value
PE	Functional ground (directly connected to the valve housing)		




3 spool positions


		Command value	Actual value	Spool position "a"; "b"
Positive	"A1"	0 ... +10 V	0 ... +10 V	P→A; B→T
	"F1"	12 ... 20 mA	12 ... 20 mA	
	"A5"	0 ... +10 V	0 ... +10 V	
Negative	"A1"	0 ... -10 V	0 ... -10 V	P→B; A→T
	"F1"	12 ... 4 mA	12 ... 4 mA	
	"A5"	0 ... -10 V	0 ... -10 V	

2 spool positions

		Command value	Actual value	Spool position "a"
Positive	"A1"	0 ... +10 V	0 ... +10 V	P→B; A→T
	"F1"	4 ... 20 mA	4 ... 20 mA	
	"A5"	0 ... +10 V	0 ... +10 V	

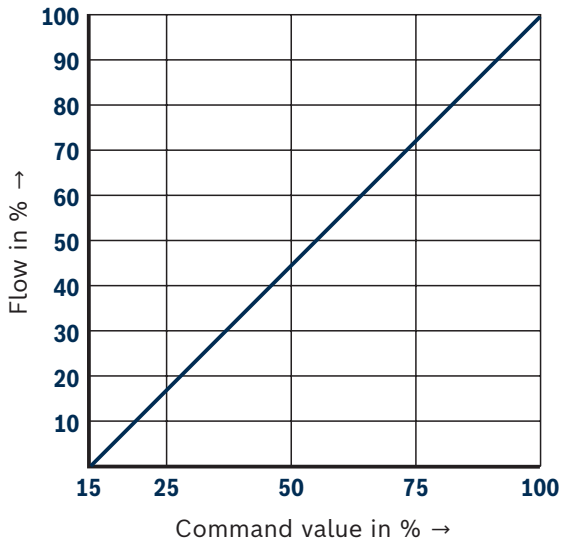
- Connection cable:
- ▶ Up to 20 m cable length type LiYCY 7 x 0.75 mm²
 - ▶ Up to 40 m cable length type LiYCY 7 x 1.0 mm²
 - ▶ EMC-compliant installation:
 - Apply screening to both line ends
 - Use metal mating connector (see page 28)
 - ▶ Alternatively up to 30 m cable length admissible
 - Apply screening on supply side
 - Plastic mating connector (see page 28) can be used

 **Notice:**
Mating connectors, separate order, see page 28 and data sheet 08006.

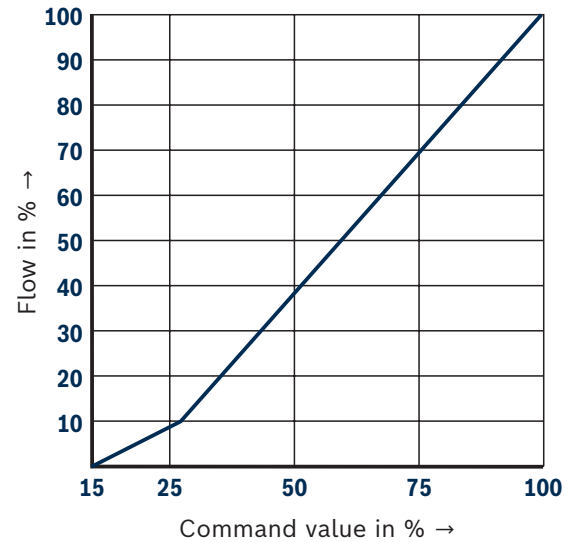
-  **Information:**
- ▶ As a consequence of overvoltage at the inputs, the inputs will be overridden.
 - ▶ Override of the inputs may lead to uncontrolled valve movements.
 - ▶ Reference signals not correctly connected may cause overvoltage or override.

Characteristic curves(measured with HLP46, $\vartheta_{oil} = 40 \pm 5 \text{ } ^\circ\text{C}$)**Flow signal function** ($\Delta p = 10 \text{ bar}$; P→A; B→T or $\Delta p = 5 \text{ bar}$ per control edge; P→A; A→T)**Version "L"**

Symbol E, W, and R

**Version "P"**

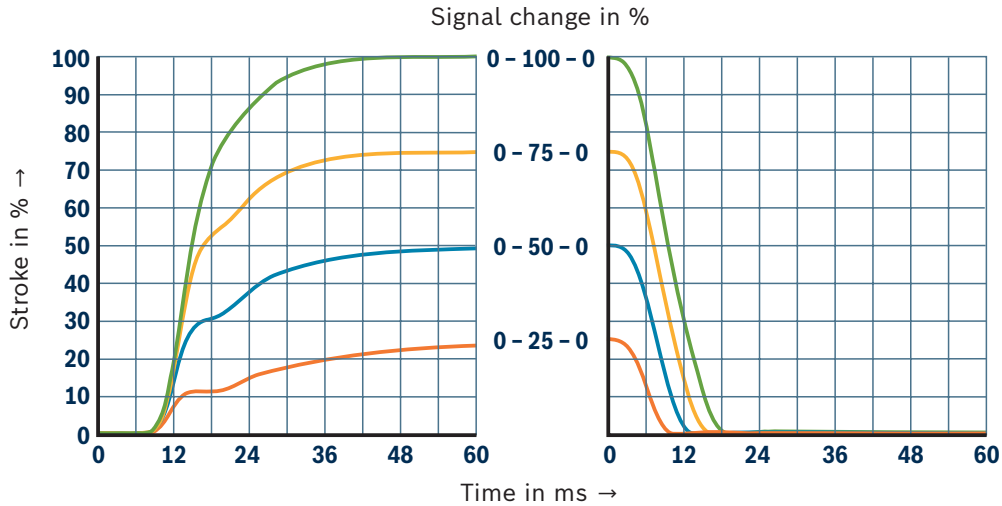
Symbol E, W, and R

**Notice:**

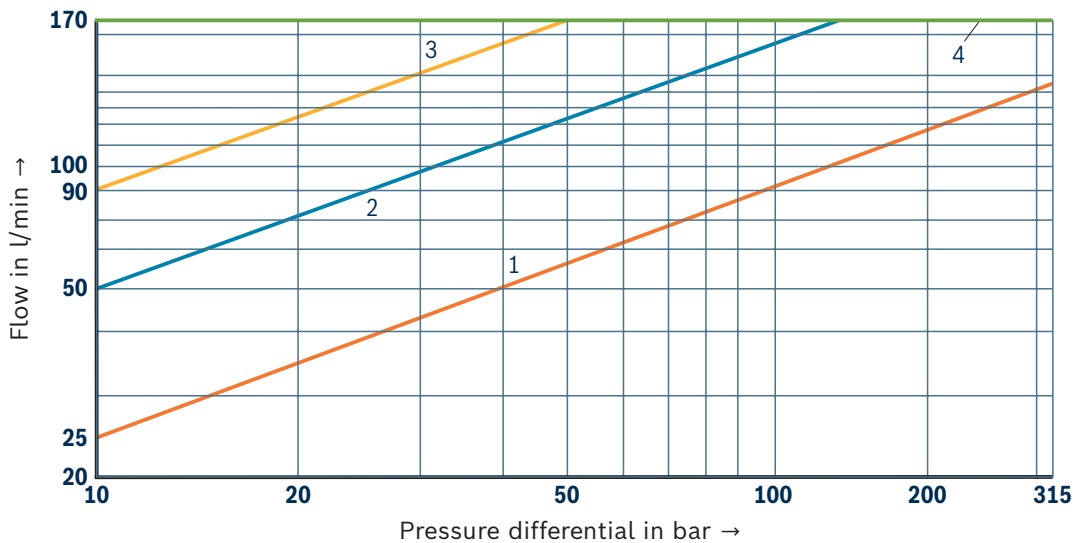
Typical characteristic curves which are subject to tolerance variations.

Characteristic curves: Size 10
(measured with HLP46, $\vartheta_{oil} = 40 \pm 5 \text{ } ^\circ\text{C}$)

Transition function with stepped electric input signals
(measured at a pilot pressure of 100 bar)



Flow/load function (at maximum valve opening; tolerance $\pm 10 \%$)



Rated flow

- 1 25 l/min
- 2 50 l/min
- 3 100 l/min
- 4 Recommended flow limitation (flow velocity 30 m/s)

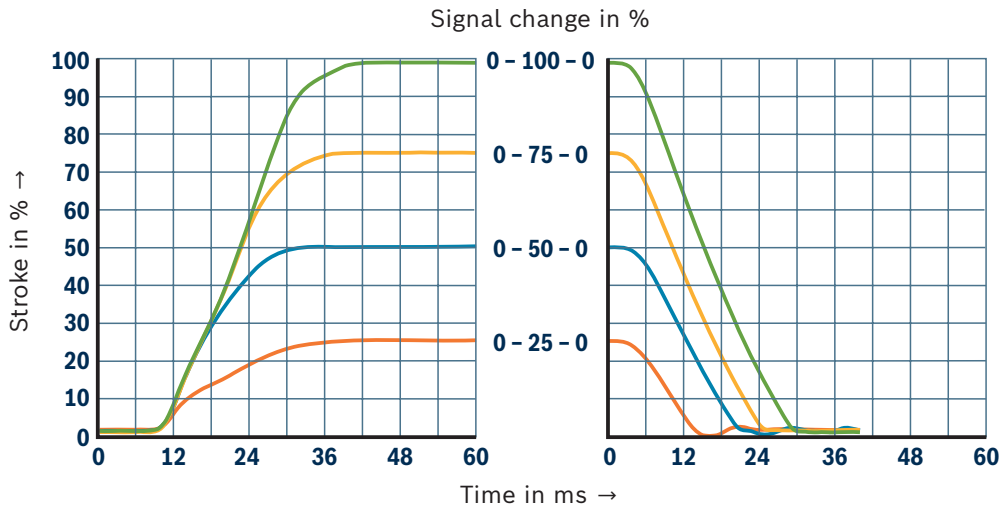


Notice:

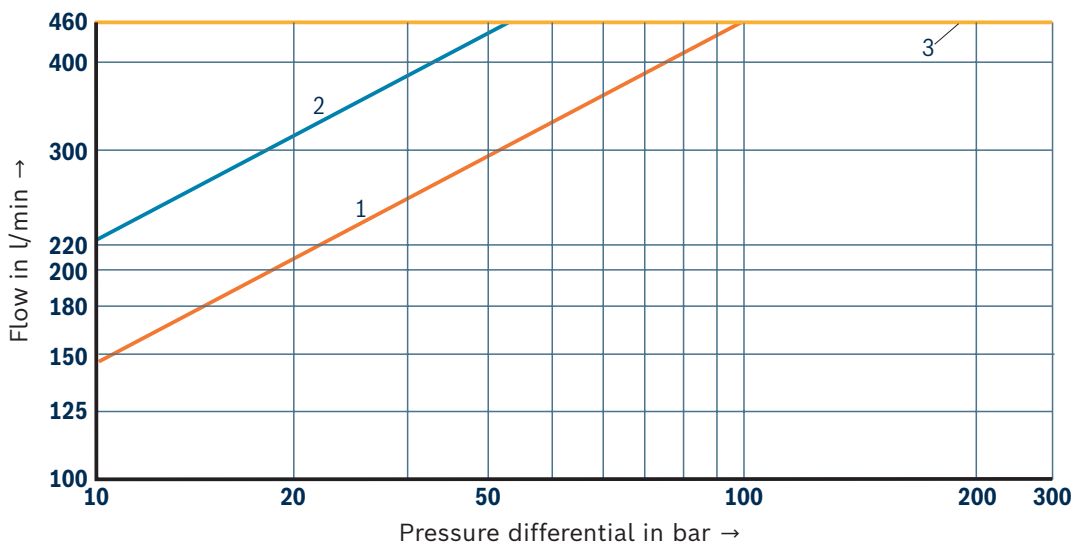
Typical characteristic curves which are subject to tolerance variations.

Characteristic curves: Size 16
(measured with HLP46, $\vartheta_{oil} = 40 \pm 5 \text{ } ^\circ\text{C}$)

Transition function with stepped electric input signals
(measured at a pilot pressure of 100 bar)



Flow/load function (at maximum valve opening; tolerance $\pm 10 \text{ } \%$)



Rated flow

- 1 150 l/min
- 2 220 l/min
- 3 Recommended flow limitation (flow velocity 30 m/s)

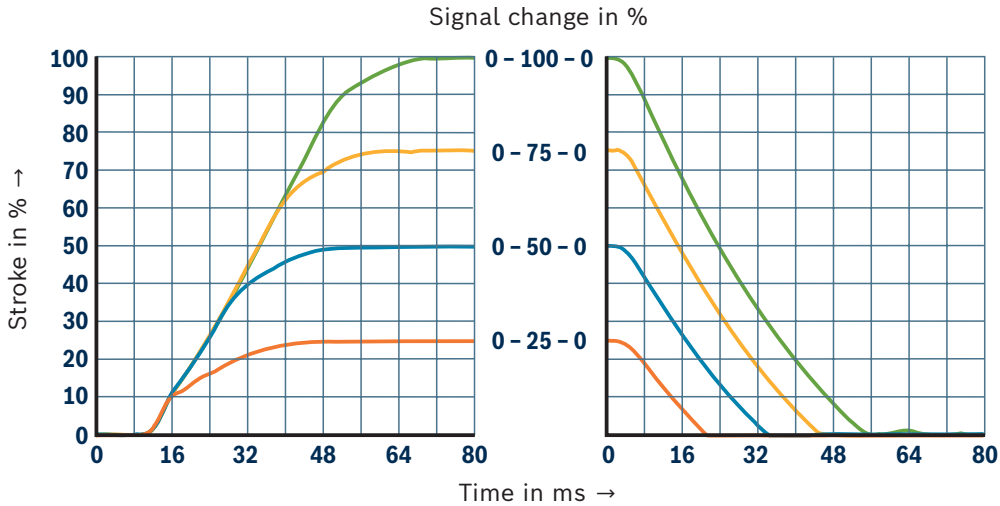


Notice:

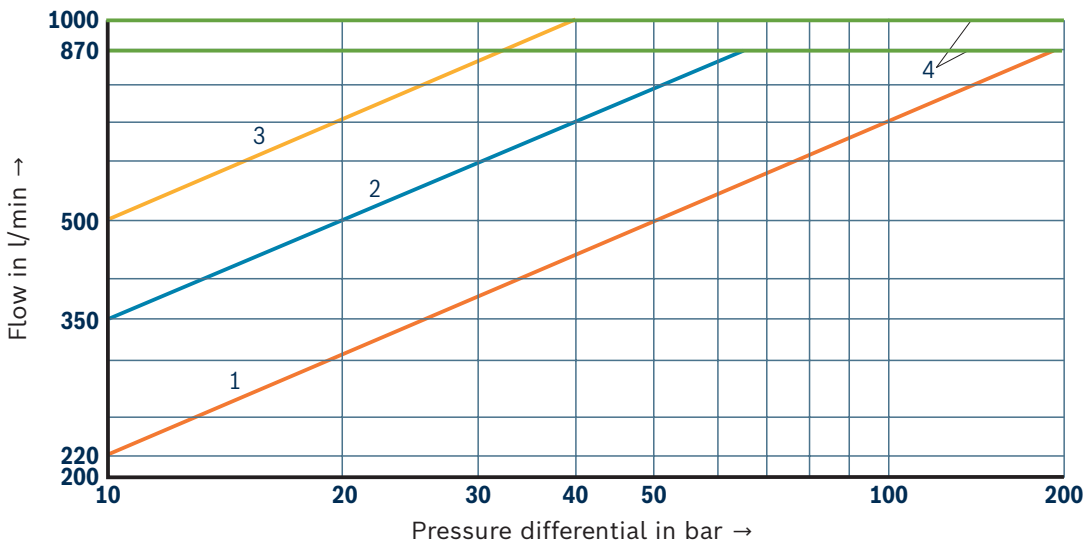
Typical characteristic curves which are subject to tolerance variations.

Characteristic curves: Sizes 25 and 27 (measured with HLP46, $\vartheta_{oil} = 40 \pm 5 \text{ }^{\circ}\text{C}$)

Transition function with stepped electric input signals (measured at a pilot pressure of 100 bar)



Flow/load function (at maximum valve opening; tolerance $\pm 10 \%$)



Rated flow

- 1 220 l/min
- 2 350 l/min
- 3 500 l/min
- 4 Recommended flow limitation (flow velocity 30 m/s)

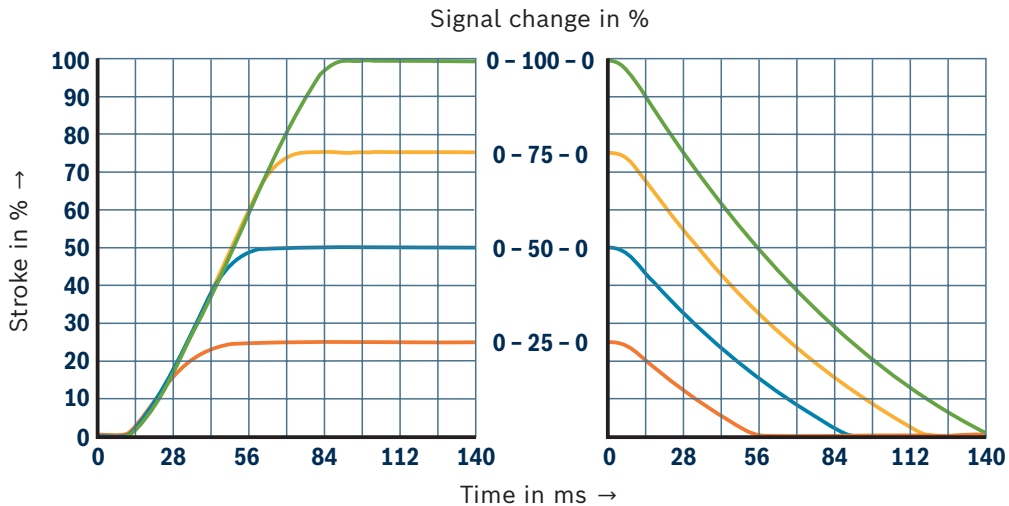


Notice:

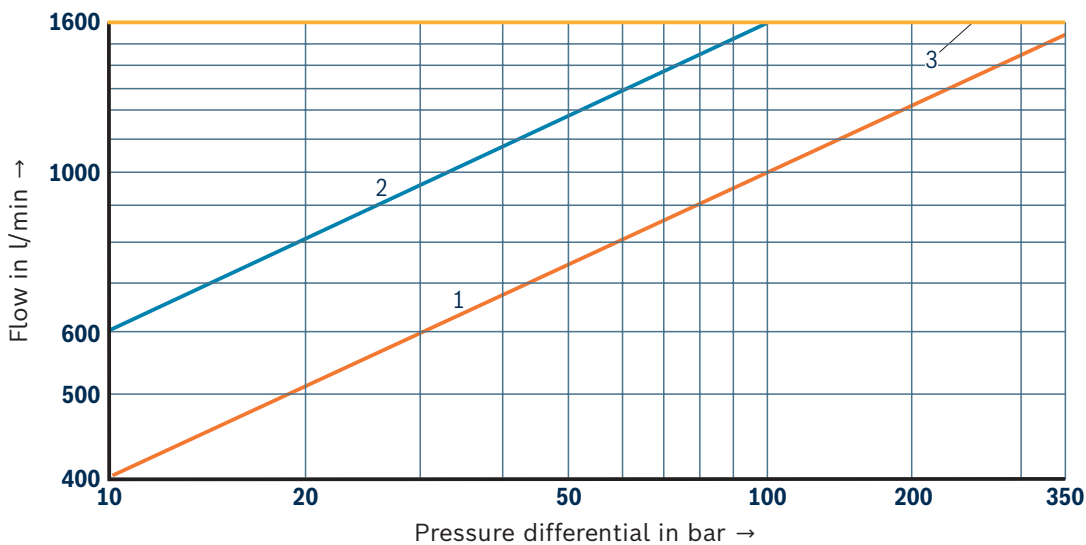
Typical characteristic curves which are subject to tolerance variations.

Characteristic curves: Size 32
(measured with HLP46, $\vartheta_{oil} = 40 \pm 5 \text{ } ^\circ\text{C}$)

Transition function with stepped electric input signals
(measured at a pilot pressure of 100 bar)



Flow/load function (at maximum valve opening; tolerance $\pm 10 \text{ } \%$)



Rated flow

- 1 400 l/min
- 2 600 l/min
- 3 Recommended flow limitation (flow velocity 30 m/s)

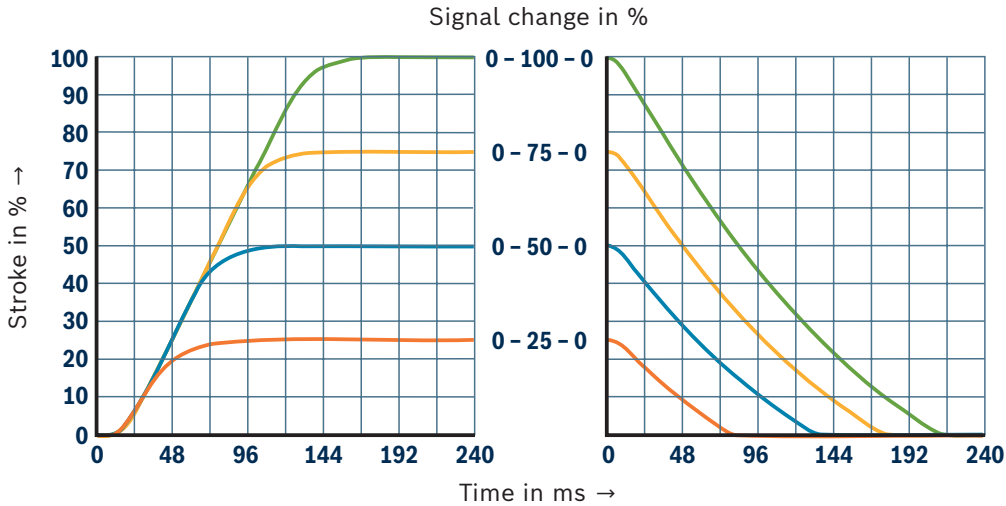


Notice:

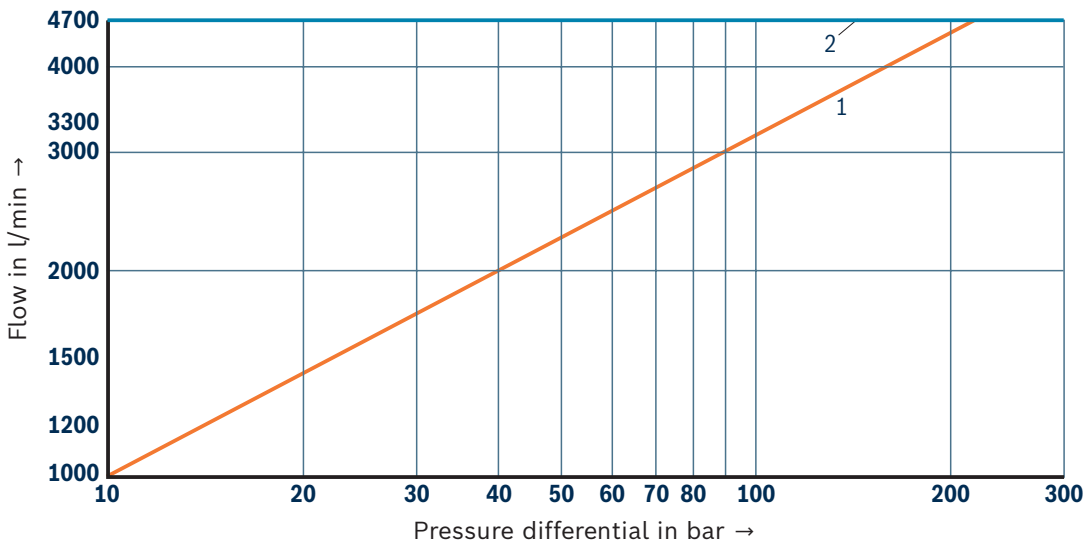
Typical characteristic curves which are subject to tolerance variations.

Characteristic curves: Size 35
(measured with HLP46, $\vartheta_{oil} = 40 \pm 5 \text{ }^{\circ}\text{C}$)

Transition function with stepped electric input signals
(measured at a pilot pressure of 100 bar)



Flow/load function (at maximum valve opening; tolerance $\pm 10 \text{ } \%$)



Rated flow

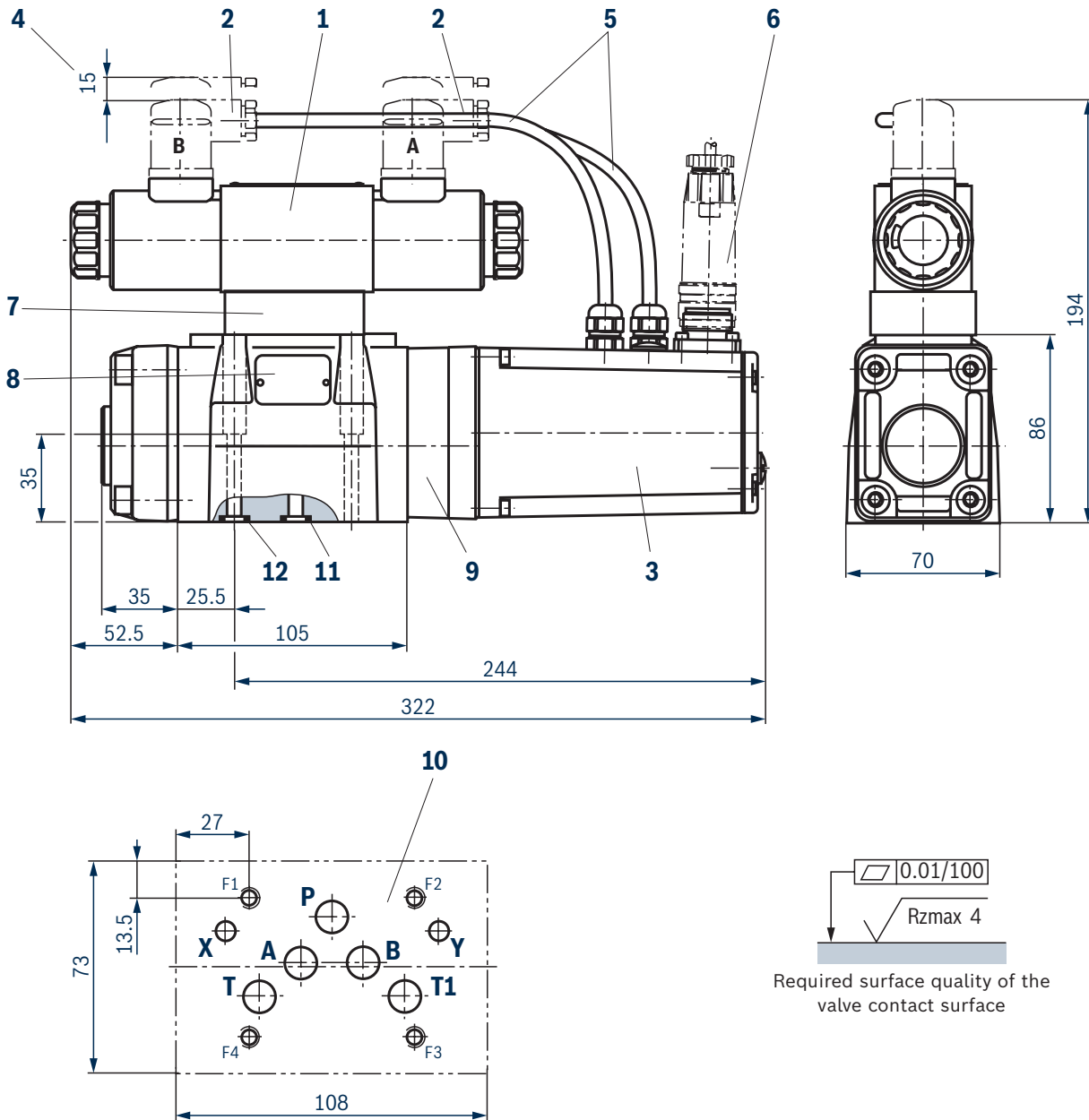
- 1 1000 l/min
- 2 Recommended flow limitation (flow velocity 30 m/s)



Notice:

Typical characteristic curves which are subject to tolerance variations.

Dimensions: Size 10 (dimensions in mm)



- 1 Pilot control valve
- 2 Mating connector (A gray; B black)
- 3 Integrated electronics (OBE)
- 4 Space required for connection cable and to remove the mating connector
- 5 Wiring
- 6 Mating connector for connector "K31" (separate order, see page 28 and data sheet 08006)
- 7 Pressure reducing valve
- 8 Name plate
- 9 Main valve
- 10 Machined valve contact surface, porting pattern according to ISO 4401-05-05-0-05 (port X, Y as required)

- 11 Identical seal rings for connection A, B, P, T
- 12 Identical seal rings for connection X, Y

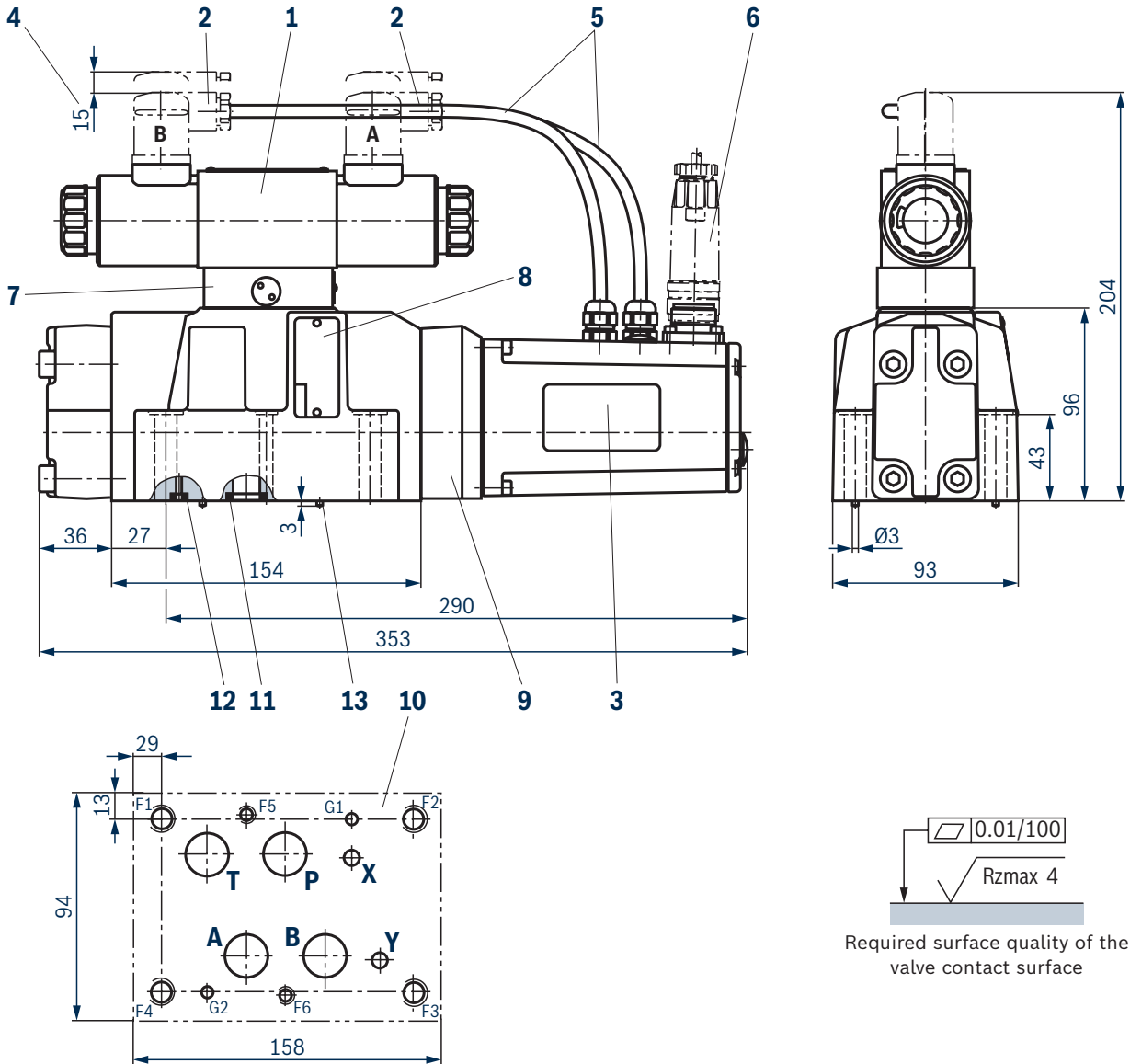
Valve mounting screws and subplates, see page 27.



Notice:

The dimensions are nominal dimensions which are subject to tolerances.

Dimensions: Size 16 (dimensions in mm)



- 1 Pilot control valve
- 2 Mating connector (A gray; B black)
- 3 Integrated electronics (OBE)
- 4 Space required for connection cable and to remove the mating connector
- 5 Wiring
- 6 Mating connector for connector "K31" (separate order, see page 28 and data sheet 08006)
- 7 Pressure reducing valve
- 8 Name plate
- 9 Main valve
- 10 Machined valve contact surface; porting pattern according to ISO 4401-07-07-0-05 (ports X, Y as required)
Deviating from the standard: Ports A, B, T and P with $\varnothing 20$ mm
- 11 Identical seal rings for connection A, B, P, T

- 12 Identical seal rings for connection X, Y
- 13 Locking pin

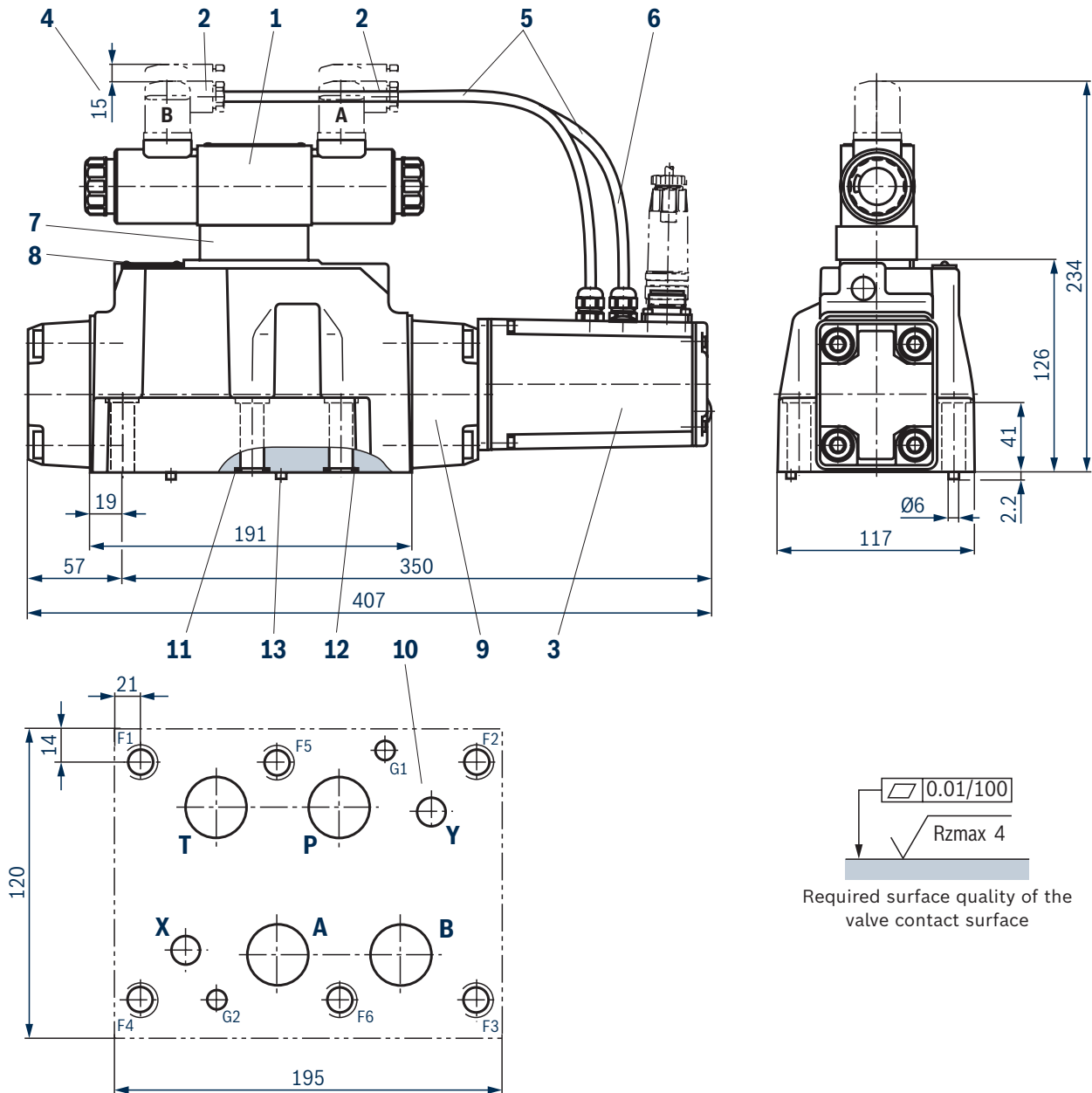
Valve mounting screws and subplates, see page 27.



Notice:

The dimensions are nominal dimensions which are subject to tolerances.

Dimensions: Size 25 (dimensions in mm)



- 1 Pilot control valve
- 2 Mating connector (A gray; B black)
- 3 Integrated electronics (OBE)
- 4 Space required for connection cable and to remove the mating connector
- 5 Wiring
- 6 Mating connector for connector "K31" (separate order, see page 28 and data sheet 08006)
- 7 Pressure reducing valve
- 8 Name plate
- 9 Main valve
- 10 Machined valve contact surface, porting pattern according to ISO 4401-08-08-0-05 (port X, Y as required)

- 11 Identical seal rings for connection A, B, P, T
- 12 Identical seal rings for connection X, Y
- 13 Locking pin

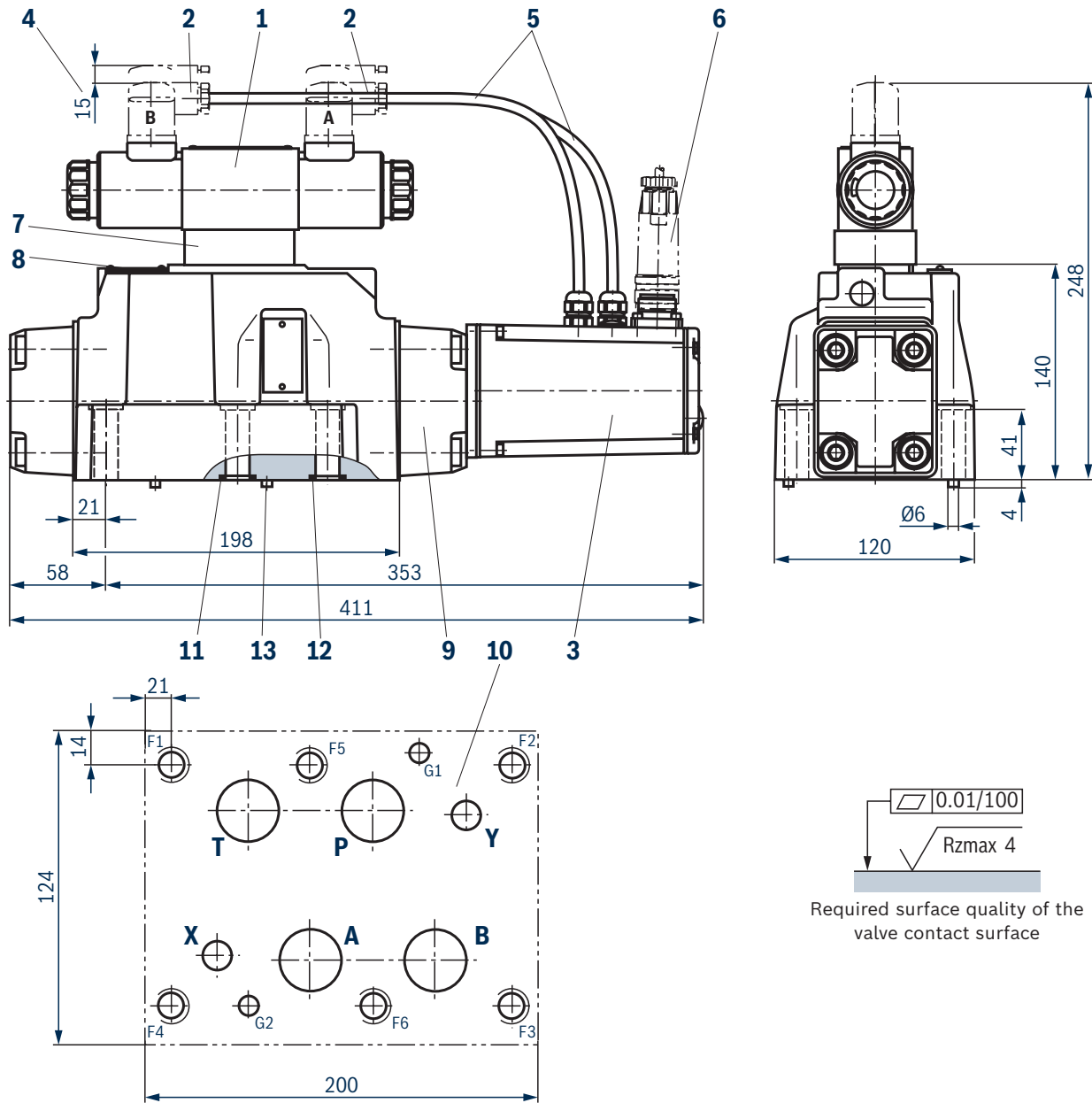
Valve mounting screws and subplates, see page 27.



Notice:

The dimensions are nominal dimensions which are subject to tolerances.

Dimensions: Size 27 (dimensions in mm)



- 1 Pilot control valve
- 2 Mating connector (A gray; B black)
- 3 Integrated electronics (OBE)
- 4 Space required for connection cable and to remove the mating connector
- 5 Wiring
- 6 Mating connector for connector "K31" (separate order, see page 28 and data sheet 08006)
- 7 Pressure reducing valve
- 8 Name plate
- 9 Main valve
- 10 Machined valve contact surface, porting pattern according to ISO 4401-08-08-0-05 (port X, Y as required)
Deviating from the standard: port A, B, T and P Ø32 mm

- 11 Identical seal rings for connection A, B, P, T
- 12 Identical seal rings for connection X, Y
- 13 Locking pin

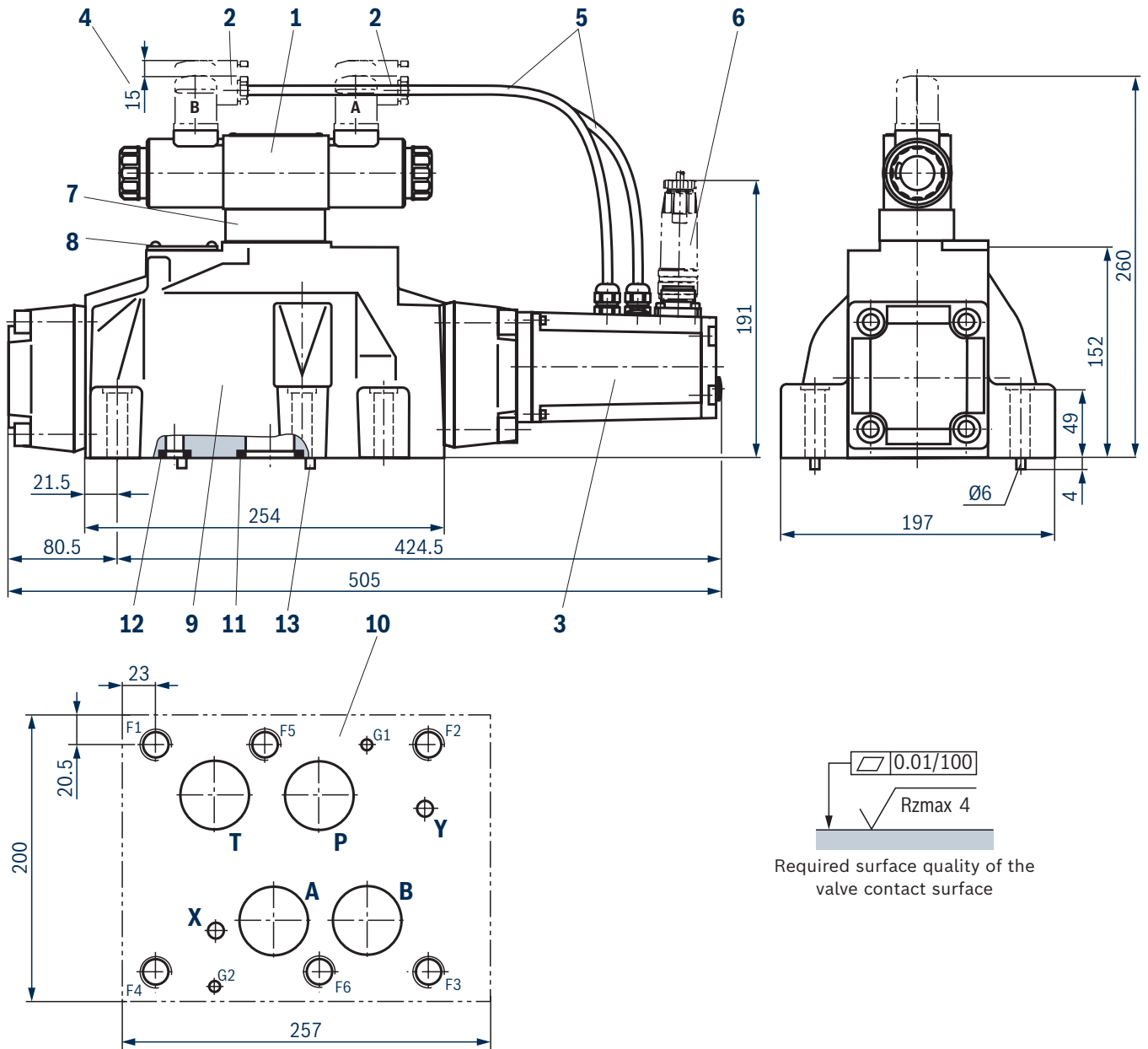
Valve mounting screws and subplates, see page 27.



Notice:

The dimensions are nominal dimensions which are subject to tolerances.

Dimensions: Size 32 (dimensions in mm)



- 1 Pilot control valve
- 2 Mating connector (A gray; B black)
- 3 Integrated electronics (OBE)
- 4 Space required for connection cable and to remove the mating connector
- 5 Wiring
- 6 Mating connector for connector "K31" (separate order, see page 28 and data sheet 08006)
- 7 Pressure reducing valve
- 8 Name plate
- 9 Main valve
- 10 Machined valve contact surface, porting pattern according to ISO 4401-10-09-0-05 (port X, Y as required)
Deviating from the standard: port A, B, T and P Ø38 mm

- 11 Identical seal rings for connection A, B, P, T
- 12 Identical seal rings for connection X, Y
- 13 Locking pin

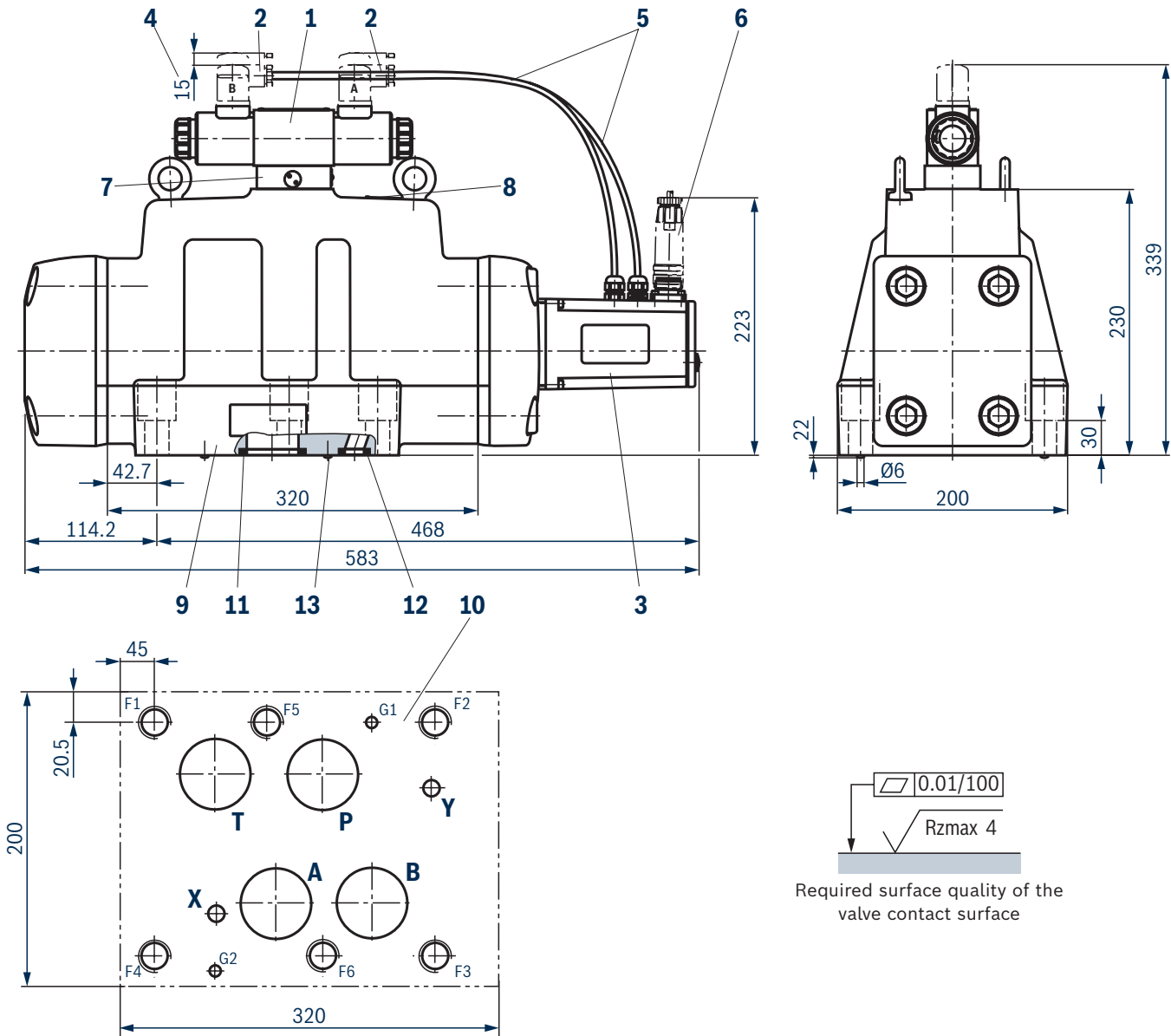
Valve mounting screws and subplates, see page 27.



Notice:

The dimensions are nominal dimensions which are subject to tolerances.

Dimensions: Size 35 (dimensions in mm)



- 1 Pilot control valve
- 2 Mating connector (A gray; B black)
- 3 Integrated electronics (OBE)
- 4 Space required for connection cable and to remove the mating connector
- 5 Wiring
- 6 Mating connector for connector "K31" (separate order, see page 28 and data sheet 08006)
- 7 Pressure reducing valve
- 8 Name plate
- 9 Main valve
- 10 Machined valve contact surface, porting pattern according to ISO 4401-10-09-0-05 (port X, Y as required)
Deviating from the standard: port A, B, T and P Ø50 mm

- 11 Identical seal rings for connection A, B, P, T
- 12 Identical seal rings for connection X, Y
- 13 Locking pin

Valve mounting screws and subplates, see page 27.



Notice:

The dimensions are nominal dimensions which are subject to tolerances.

Dimensions

Valve mounting screws (separate order)

Size	Quantity	Hexagon socket head cap screws	Material number
10	4	ISO 4762 - M6 x 45 - 10.9-CM-Fe-ZnNi-5-Cn-T0-H-B Friction coefficient $\mu_{\text{total}} = 0.09 \dots 0.14$; tightening torque $M_A = 13.5 \text{ Nm} \pm 10\%$	R913043777
	or		
	4	ISO 4762 - M6 x 45 - 10.9 Friction coefficient $\mu_{\text{total}} = 0.12 \dots 0.17$; tightening torque $M_A = 15.5 \text{ Nm} \pm 10\%$	Not included in the Rexroth delivery range
16	2	ISO 4762 - M6 x 60 - 10.9-CM-Fe-ZnNi-5-Cn-T0-H-B Friction coefficient $\mu_{\text{total}} = 0.09 \dots 0.14$; tightening torque $M_A = 12.2 \text{ Nm} \pm 10\%$	R913043410
	4	ISO 4762 - M10 x 60 - 10.9-fZn/nc/480h/C Friction coefficient $\mu_{\text{total}} = 0.09 \dots 0.14$; tightening torque $M_A = 58 \text{ Nm} \pm 20\%$	R913014770
	or		
	2	ISO 4762 - M6 x 60 - 10.9 Friction coefficient $\mu_{\text{total}} = 0.12 \dots 0.17$; tightening torque $M_A = 15.5 \text{ Nm} \pm 10\%$	Not included in the Rexroth delivery range
	4	ISO 4762 - M10 x 60 - 10.9 Friction coefficient $\mu_{\text{total}} = 0.12 \dots 0.17$; tightening torque $M_A = 75 \text{ Nm} \pm 10\%$	
25, 27	6	ISO 4762 - M12 x 60 - 10.9-fZn/nc/480h/C Friction coefficient $\mu_{\text{total}} = 0.09 \dots 0.14$; tightening torque $M_A = 100 \text{ Nm} \pm 20\%$	R913015613
	or		
	6	ISO 4762 - M12 x 60 Friction coefficient $\mu_{\text{total}} = 0.12 \dots 0.17$; tightening torque $M_A = 100 \text{ Nm} \pm 10\%$	Not included in the Rexroth delivery range
32	6	ISO 4762 - M20 x 80 - 10.9-fZn/nc/480h/C Friction coefficient $\mu_{\text{total}} = 0.09 \dots 0.14$; tightening torque $M_A = 340 \text{ Nm} \pm 20\%$	R913008472
	or		
	6	ISO 4762 - M20 x 80 Friction coefficient $\mu_{\text{total}} = 0.12 \dots 0.17$; tightening torque $M_A = 430 \text{ Nm} \pm 10\%$	Not included in the Rexroth delivery range
35	6	ISO 4762 - M20 x 60 - 10.9-fZn/nc/480h/C Friction coefficient $\mu_{\text{total}} = 0.09 \dots 0.14$; tightening torque $M_A = 465 \text{ Nm} \pm 20\%$	R913014726
	or		
	6	ISO 4762 - M20 x 60 - 10.9 Friction coefficient $\mu_{\text{total}} = 0.12 \dots 0.17$; tightening torque $M_A = 610 \text{ Nm} \pm 10\%$	Not included in the Rexroth delivery range



Notice:

The tightening torque of the hexagon socket head cap screws refers to the maximum operating pressure.

Subplates (separate order) with porting pattern according to ISO 4401, see data sheet 45100.

Accessories (separate order)

Mating connectors and cable sets

Item ¹⁾	Designation	Version	Short designation	Material number	Data sheet
6	Mating connector; for valves with round connector, 6-pole + PE	Straight, metal, PG11	7PZ31...M	R900223890	08006
		Straight, plastic, PG11	7PZ31...K	R900021267	
		Angled, plastic, PG11	7PZ31...K	R900217845	
	Cable sets; for valves with round connector, 6-pole + PE	Plastic, 3.0 m	7PZ31 BF6	R901420483	
		Plastic, 5.0 m		R901420491	
		Plastic, 10.0 m		R901420496	
		Plastic, 20.0 m		R901448068	

¹⁾ See dimensions page 21 ... 26.

Project planning information

- ▶ When replacing the component series 2X by component series 3X, the electronics interface must be defined with "A5" (enable signal at pin C).
- ▶ The maximum operating pressure of 350 bar at port T is possible with size 35 from component series 36. For component series ≤35, the valve may be operated up to a maximum of 250 bar.

Further information

- ▶ Hydraulic valves for industrial applications Data sheet 07600-B
- ▶ Subplates Data sheet 45100
- ▶ Hydraulic fluids on mineral oil basis Data sheet 90220
- ▶ Environmentally compatible hydraulic fluids Data sheet 90221
- ▶ Flame-resistant, water-free hydraulic fluids Data sheet 90222
- ▶ Flame-resistant hydraulic fluids – containing water (HFAE, HFAS, HFB, HFC) Data sheet 90223
- ▶ Reliability characteristics according to EN ISO 13849 Data sheet 08012
- ▶ General product information on hydraulic products Data sheet 07008
- ▶ Installation, commissioning and maintenance of servo valves and high-response valves Data sheet 07700
- ▶ Assembly, commissioning and maintenance of hydraulic systems Data sheet 07900
- ▶ Information on available spare parts www.boschrexroth.com/spc

Bosch Rexroth AG
Industrial Hydraulics
Zum Eisengießer 1
97816 Lohr am Main, Germany
Phone +49 (0) 93 52/40 30 20
my.support@boschrexroth.com
www.boschrexroth.com

© All rights reserved to Bosch Rexroth AG, also regarding any disposal, exploitation, reproduction, editing, distribution, as well as in the event of applications for industrial property rights.
The data specified above only serve to describe the product. As our products are constantly being further developed, no statements concerning a certain condition or suitability for a certain application can be derived from our information. The information given does not release the user from the obligation of own judgment and verification. It must be remembered that our products are subject to a natural process of wear and aging.